

**FORT GARRY LIBRARY
1360 PEMBINA HIGHWAY**

PROJECT NUMBER 2015-054
MARCH 2015



CITY OF WINNIPEG
PLANNING, PROPERTY AND DEVELOPMENT DEPARTMENT
MUNICIPAL ACCOMMODATIONS DIVISION
300-65 GARRY STREET
WINNIPEG, MANITOBA
R3C 4K4

DESIGN SUMMARY & SCOPE OF WORK

- UPGRADE UNIVERSAL DESIGN ADDRESSING ACCESSIBILITY REQUIREMENTS AT THE FRONT ENTRANCE WHICH INCLUDES NEW CONCRETE RAMP, STAIRS, RAILING, POSTS.
- UPGRADE EXTERIOR FRONT LANDSCAPING WHICH INCLUDES NEW TOPSOIL, SOD, CONCRETE PADS, SHRUBS, BENCHES, MULCH, ARCHITECTURAL SHARDS & GRANITE BOULDERS.
- UPGRADE SITE LIGHTING WITH 4 NEW EXTERIOR LIGHT STANDARDS ON PILES.

DRAWING LIST

COVER SHEET

A1	KEY PLAN / UNDERGROUND SERVICES, DESIGN SUMMARY & SCOPE OF WORK, DRAWING LIST
----	---

STRUCTURAL

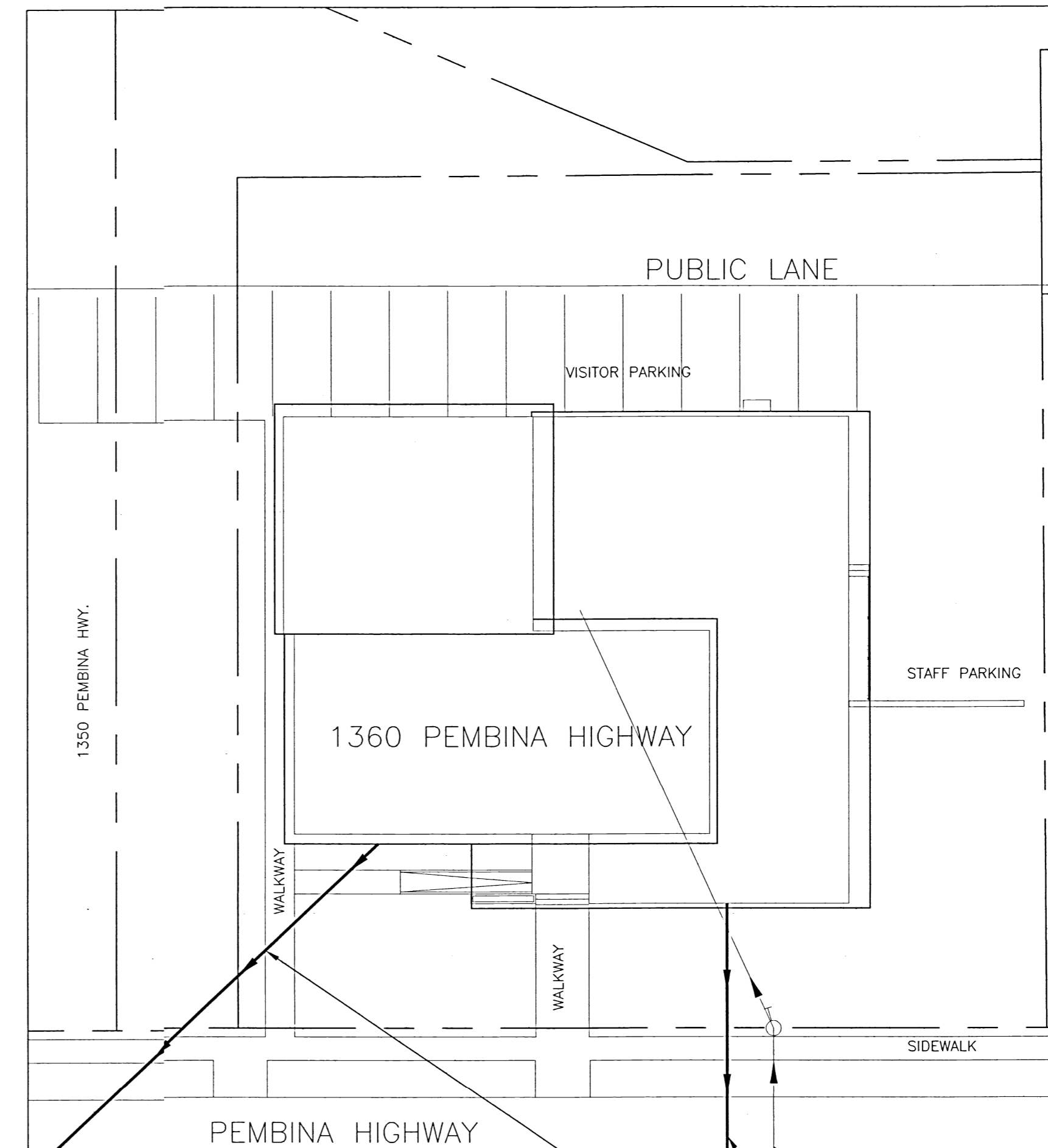
S1	PARTIAL SITE PLAN - RAMP, STAIR & WALKWAY DEMOLITION
S2	PARTIAL SITE PLAN - NEW RAMP & PILE PLAN
S3	STRUCTURAL SECTIONS & DETAILS
S4	PARTIAL SITE PLAN - RAMP GUARD & HANDRAIL PLAN, ELEVATIONS, SECTIONS & DETAILS

ELECTRICAL

E1	PARTIAL SITE PLAN, DETAIL, PARTS LIST RENOVATION
E2	ELECTRICAL SPECIFICATIONS

LANDSCAPING

L1	PARTIAL SITE PLAN - LANDSCAPING
L2	LANDSCAPING SPECIFICATIONS



KEY PLAN / UNDERGROUND SERVICES
SCALE: N.T.S.

- WATER SERVICE FROM HIGHWAY (DISTANCE 23'-0" FROM PROPERTY LINE TO HIGHWAY CONNECTION)
- TO SANITARY SEWER ON HIGHWAY (DISTANCE 77'-0" FROM PROPERTY LINE TO HIGHWAY CONNECTION)
- STORM SEWER TO HIGHWAY (DISTANCE 20'-0" FROM PROPERTY LINE TO HIGHWAY CONNECTION)

NOTES:
THESE DRAWINGS SHALL NOT BE SCALED.
THE CONTRACTOR SHALL VISIT THE SITE AND SATISFY ONESELF ALL DIMENSIONS, DATUM, AND DETAILED INFORMATION SHOWN ARE CORRECT.
THE CONTRACTOR IS TO REVIEW AND COORDINATE ALL ARCHITECTURAL, MECHANICAL, ELECTRICAL AND STRUCTURAL DRAWINGS FOR ADDITIONAL OPENINGS THROUGH FLOORS, WALLS, AND CEILINGS FOR DUCT, PIPE & ELECTRICAL RISERS AND ALL OPENINGS NOT SHOWN ON DRAWINGS.
ALL OPENINGS THROUGH FIRE ASSEMBLIES ARE TO BE FIRE STOPPED AND SEALED WITH ULC APPROVED FIRE STOPPING TO MAINTAIN THE INTEGRITY OF THE FIRE SEPARATION, AND PROVIDE A SMOKE-TIGHT BARRIER.
ALL PRODUCTS AND MATERIALS TO BE USED AND INSTALLED SHALL CONFORM WITH MANUFACTURERS SPECIFICATIONS & APPLICABLE CODES.
THE CONTRACTOR SHALL BE RESPONSIBLE TO PATCH AND MAKE GOOD ALL EXISTING CONSTRUCTION AFFECTED BY THE REMOVAL OF ALL ITEMS FORMING THE PART OF THE RENOVATION WORK.
WHERE NEW FLOORING AND BASE IS TO BE INSTALLED IN EXISTING AREAS (REFER TO FLOOR PLAN AND ROOM SCHEDULE) THE EXISTING FLOORING SURFACE AND BASE MUST BE REMOVED, UNLESS OTHERWISE NOTED. ALL FLOOR SURFACES SHALL BE PREPARED IN ACCORDANCE TO MANUFACTURERS RECOMMENDATIONS FOR INSTALLATION OF NEW FLOOR.
WHERE PAINTING OF EXISTING WALLS IS INDICATED ON THE ROOM SCHEDULE, THESE WALLS MUST BE CLEANED OF ANY EXISTING WALL COVERING, PATCHED & PREPARED TO ACCEPT NEW MATERIAL, UNLESS OTHERWISE NOTED.

ISSUED FOR CONSTRUCTION		MMK 2015.07.24	
No.	REVISION/DESCRIPTION	BY	DATE
SEAL			



DRAWN	CHECKED	DESIGNED	APPROVED
DATE 2015.03.03	USER APPROVAL		

THE CITY OF WINNIPEG
PLANNING, PROPERTY AND DEVELOPMENT DEPARTMENT
MUNICIPAL ACCOMMODATIONS DIVISION
3-65 GARRY STREET, R3C 4K4

PROJECT
**FORT GARRY LIBRARY
EXTERIOR REFURBISHING**

1360 PEMBINA HIGHWAY
SHEET TITLE

KEY PLAN / UNDERGROUND SERVICES
DESIGN SUMMARY & SCOPE OF WORK
DRAWING LIST

SCALE	PROJECT No:	SHEET No:
AS SHOWN	2015-054	A1