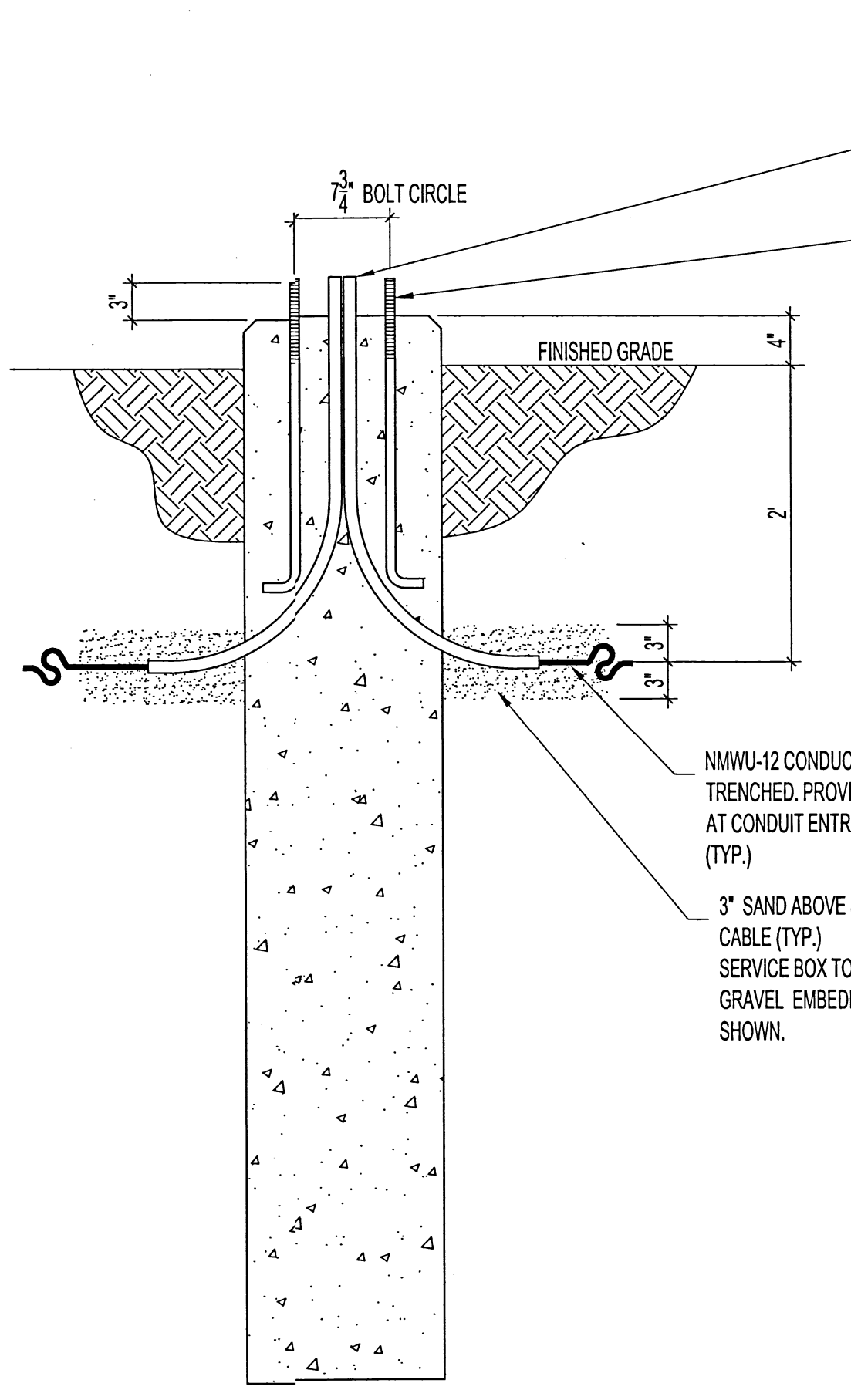
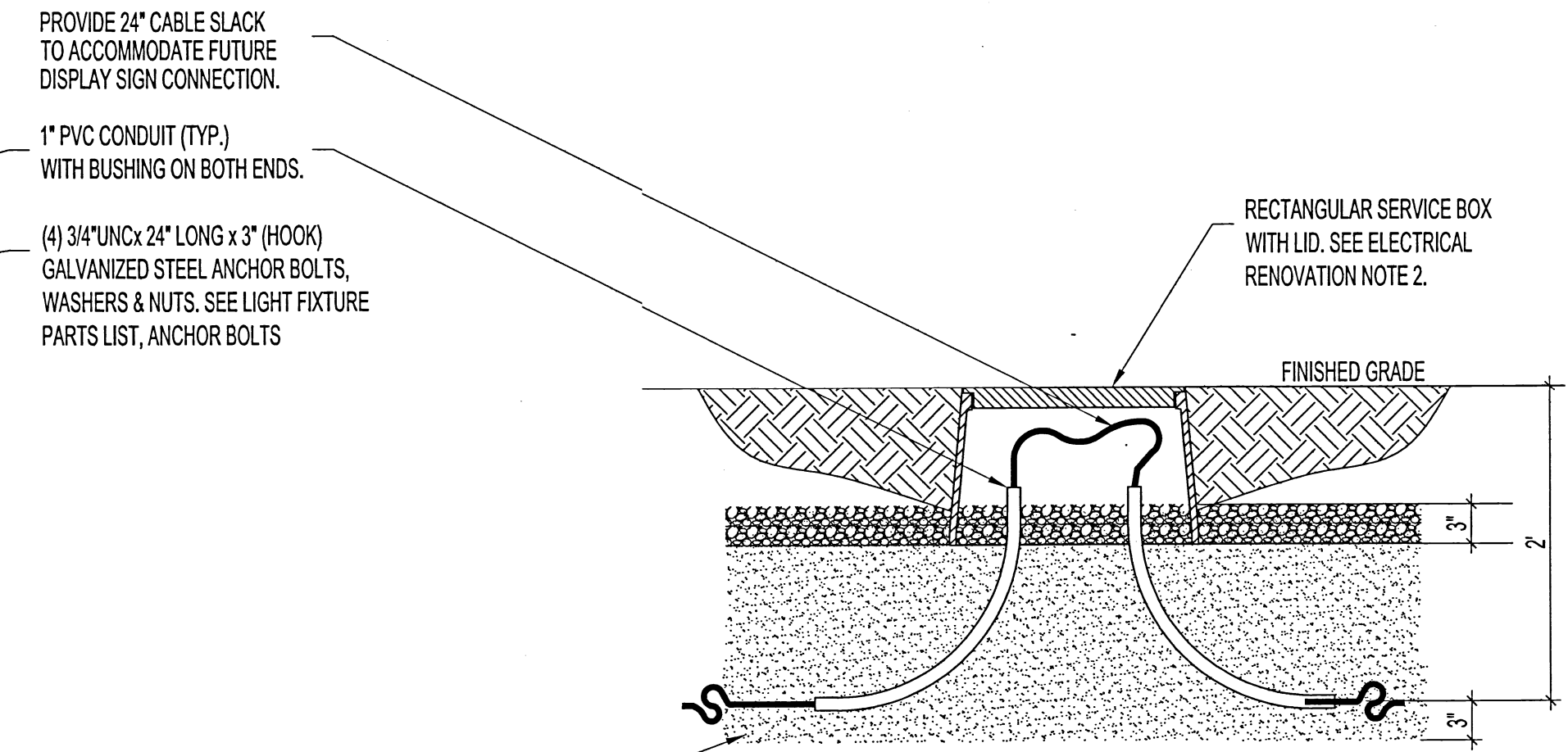


PARTIAL SITE PLAN
SCALE: 1/8"=1'-0"



LIGHT FIXTURE POLE BASE
SCALE: 1"=1'-0"



SERVICE BOX FOR FUTURE DISPLAY SIGN
SCALE: 1"=1'-0"

LIGHT FIXTURE PARTS LIST				
TYPE	QTY	MANUFACTURER	CATALOGUE No.	DESCRIPTION
A	1	ABL-LITHONIA LIGHTING	MRP LED 42C 530 30K SR3 120 PER DDBXD	FIXTURE WITH NEMA TWIST-LOCK RECEPTACLE, 42 LEDs, 530mA DRIVE CURRENT, 3000K COLOUR TEMP., TYPE 3 DISTRIBUTION, FIXTURE COLOUR: DARK BRONZE.
B	3	ABL-LITHONIA LIGHTING	MRP LED 42C 530 30K SR3 120 DDBXD	FIXTURE, 42 LEDs, 530mA DRIVE CURRENT, 3000K COLOUR TEMP., TYPE 3 DISTRIBUTION, FIXTURE COLOUR: DARK BRONZE.
	1	ABL-LITHONIA LIGHTING	DLL127F 1.5JU	ELECTRONIC LOCKING TYPE PHOTOCELL
	4	HAPCO	RS49.2C5-4 -8M CW 2-38" TENON	ALUMINUM LIGHT POLE (LENGTH 9'-2") WITH BASE, ANCHOR BOLTS. COLOUR: DARK BRONZE.
	4	ABL-LITHONIA LIGHTING	MRPT20	2-3/8" TENON SLIP FITTER ADAPTER
	4	PRAIRIE POLE	AB75	ANCHOR BOLTS, 3/4"UNC x 24" LONG x 3" (HOOK), COMES WITH 2 NUTS, 2 WASHERS & 1 LOCKER WASHER, MATERIAL: GALVANIZED STEEL.

ELECTRICAL RENOVATION NOTES:

ALSO SEE ELECTRICAL SPECIFICATIONS.
REFER TO ARCHITECTURAL DRAWING FOR LIGHTING POLE LOCATIONS.

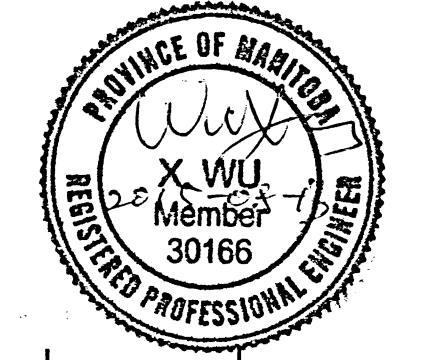
1. PROVIDE DEDICATED 15A CIRCUIT INCLUDING BREAKER, OUTDOOR LIGHT CONTACTOR 1P-15A-120V RATED, CONTROL VOLTAGE 120V, 120V/24 HR. TIME CLOCK WITH 3-ON-OFF SETTINGS. FOR LIGHT FIXTURES TYPE "A" & "B". CONNECT TO AVAILABLE CIRCUIT IN PANEL "M" IN BASEMENT & LABEL. MOUNT LIGHT CONTACTOR & TIME CLOCK INSIDE NEAR PANEL "M".

NOTE: LIGHT FIXTURES SHALL BE CONTROLLABLE WITH TIMER AND/OR PHOTOCELL.

2. FOR FUTURE DISPLAY SIGN CONNECTION
PROVIDE HDPE RECTANGULAR SERVICE BOX (MINIMUM SIZE 19"x14"x12"DEEP) WITH OVERLAPPING TYPE LID WITH HEX BOLTS. LID MARKED: "ELECTRIC"
CONFIRM LOCATION WITH CONTRACT ADMINISTRATION.

NOTES:
THESE DRAWINGS SHALL NOT BE SCALED.
THE CONTRACTOR SHALL VISIT THE SITE AND SATISFY ONESELF ALL DIMENSIONS, DATUM, AND DETAILED INFORMATION SHOWN ARE CORRECT.
THE CONTRACTOR IS TO REVIEW AND COORDINATE ALL ARCHITECTURAL, MECHANICAL, ELECTRICAL AND STRUCTURAL DRAWINGS FOR ADDITIONAL OPENINGS THROUGH FLOORS, WALLS, AND CEILINGS FOR DUCT, PIPE & ELECTRICAL RISERS AND ALL OPENINGS NOT SHOWN ON DRAWINGS.
ALL OPENINGS THROUGH FIRE ASSEMBLIES ARE TO BE FIRE STOPPED AND SEALED WITH ULC APPROVED FIRE STOPPING TO MAINTAIN THE INTEGRITY OF THE FIRE SEPARATION, AND PROVIDE A SMOKE-TIGHT BARRIER.
ALL PRODUCTS AND MATERIALS TO BE USED AND INSTALLED SHALL CONFORM WITH MANUFACTURER'S SPECIFICATIONS & APPLICABLE CODES.
THE CONTRACTOR SHALL BE RESPONSIBLE TO PATCH AND MAKE GOOD ALL EXISTING CONSTRUCTION AFFECTED BY THE REMOVAL OF ALL ITEMS FORMING THE PART OF THE RENOVATION WORK.
PRIOR TO EXCAVATING CONTACT MANTOBA HYDRO, MTS., SHAW AND OTHERS TO LOCATE POSSIBLE UNDERGROUND SERVICES. ALSO REFER TO ARCHITECTURAL DRAWING A1 FOR INFORMATION ON UNDERGROUND SERVICES.

No.	REVISION/DESCRIPTION	BY	DATE
0	ISSUED FOR CONSTRUCTION	DTA	2015.08.13



DRAWN	DATE	CHECKED	DESIGNED	APPROVED
USER	2015.08.12	USER	DTA	DTA

THE CITY OF WINNIPEG
PLANNING, PROPERTY AND DEVELOPMENT DEPARTMENT
MUNICIPAL ACCOMMODATIONS DIVISION
3-65 GARRY STREET, R3C 4K4

PROJECT
FORT GARRY LIBRARY
EXTERIOR REFURBISHING
DESIGN OF EXTERIOR REFURBISHING
1360 PEMBINA HIGHWAY

SHEET TITLE
PARTIAL SITE PLAN, DETAIL, PARTS LIST
RENOVATION