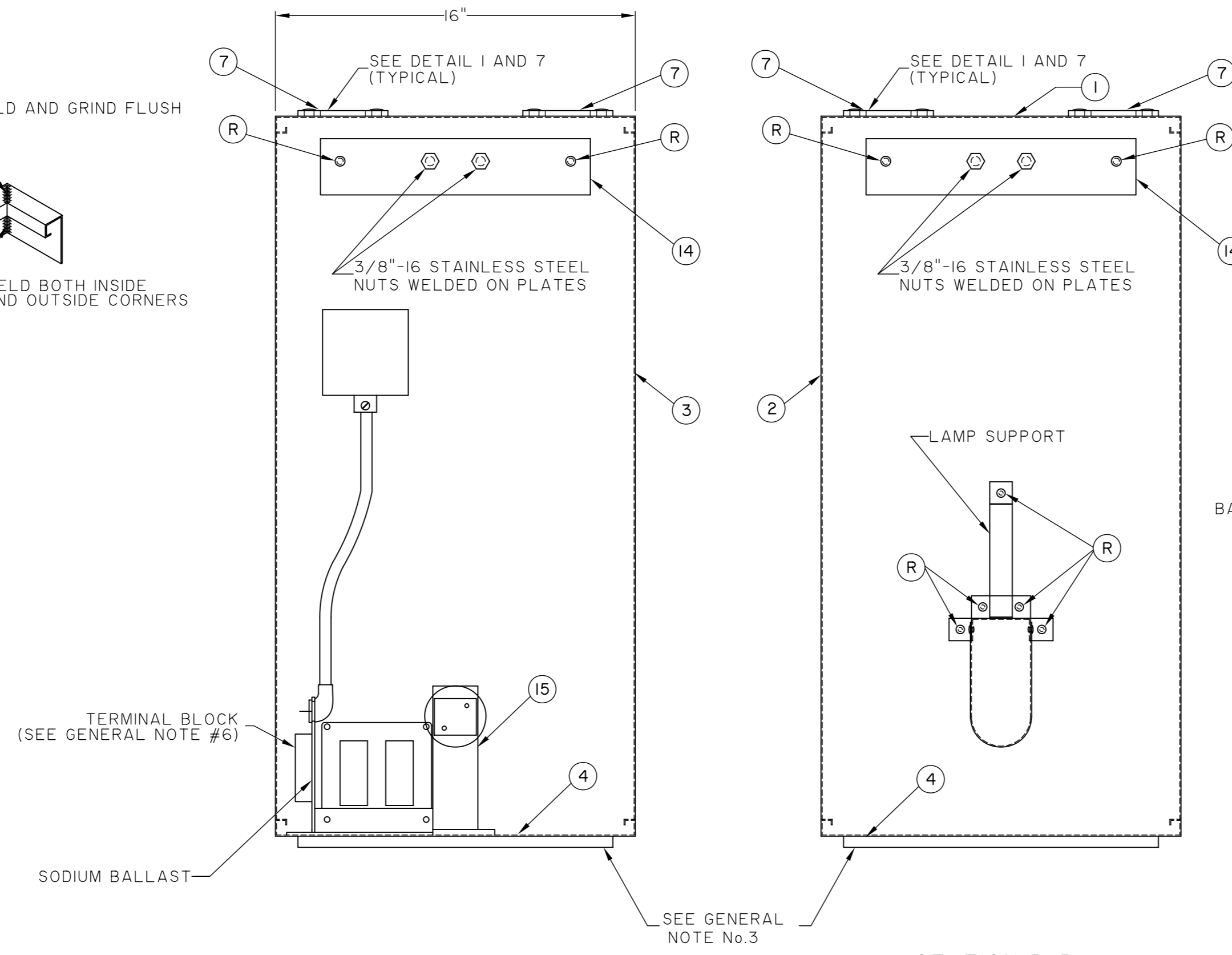


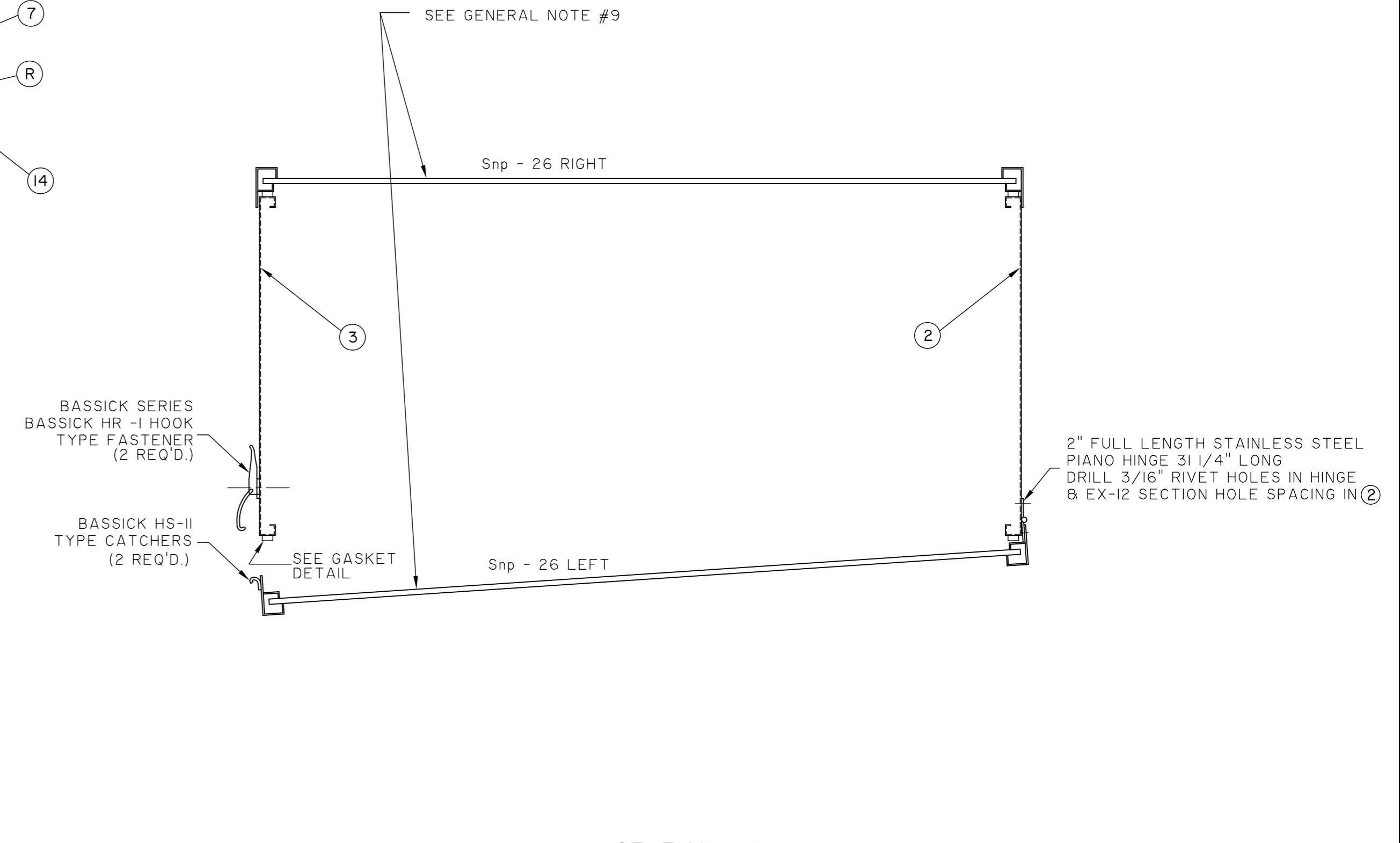
FRONT VIEW

(MINUS EX-12 - SECTIONS & MOUNTING BRACKET)

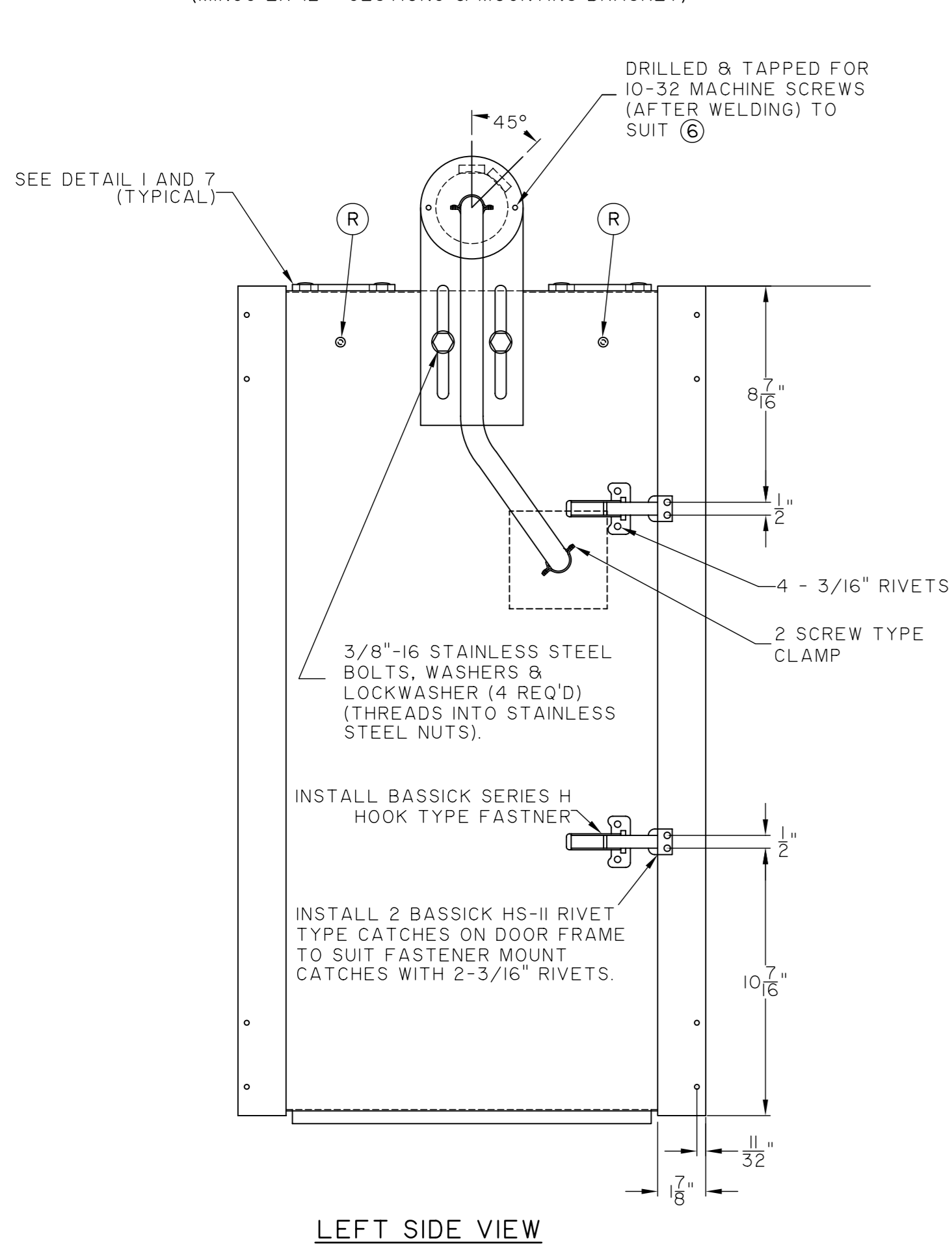


SECTION A-A

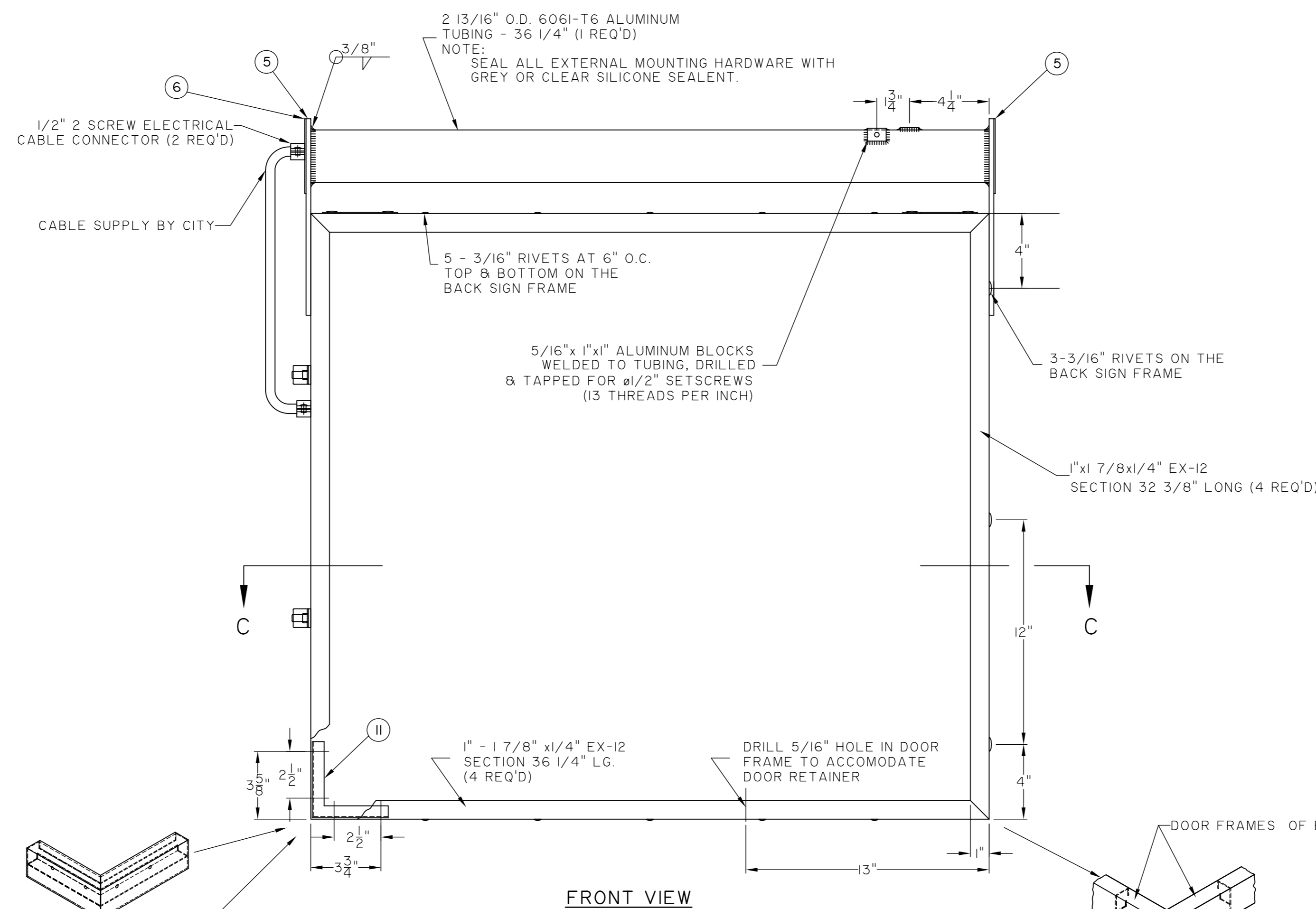
SECTION B-B



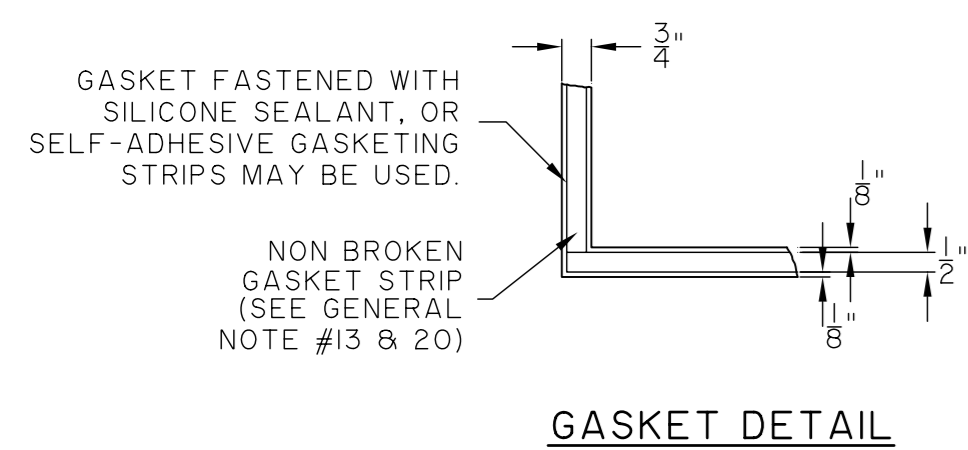
SECTION C-C



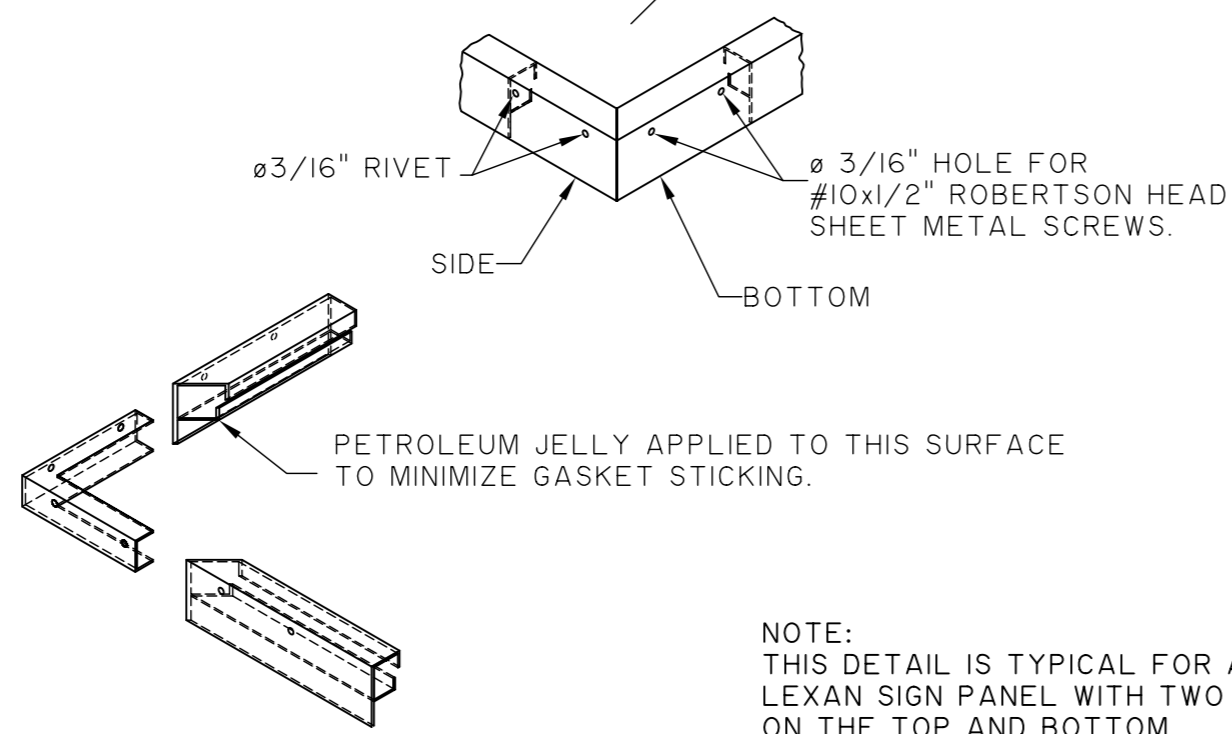
LEFT SIDE VIEW



FRONT VIEW



GASKET DETAIL



NOTE: THIS DETAIL IS TYPICAL FOR ACCESS TO LEXAN SIGN PANEL WITH TWO SCREWS ON THE TOP AND BOTTOM

- GENERAL NOTES:**
- FOR DETAILS OF (1) TO (6), (11), (13), (14), (15) SEE DRAWINGS ST-145, 1 OF 3, AND 3 OF 3
 - FOR MOUNTING HARDWARE USE 10-32 HEX. HEAD MACHINE SCREWS, LOCKWASHERS AND NUTS SHALL BE STAINLESS STEEL 3/8-16 BOLTS, NUTS AND LOCKWASHERS SHALL BE STAINLESS STEEL WHERE INDICATED BY (R) USE 3/16 ALUMINIUM RIVET.
 - SHIPPING BLOCKS (2"x14"x1/2") TO BE INSTALLED WITH No. 8x1/2" SMS OR WOOD SCREWS THROUGH BOTTOM DRAIN HOLES. (2 SHIPPING BLOCKS REQ'D.)
 - FOR SODIUM BALLAST USE 90 WATT C.G.E. COLD START. CAT. No.13 A 262 E. OR APPROVED EQUIPMENT.
 - SODIUM BALLAST TO BE MOUNTED TIGHT TO BOTTOM PANEL FOR HEAT TRANSFER.
 - TERMINAL BLOCK TO BE MOUNTED ON THE INSIDE OF LEFT PANEL ABOVE THE BALLAST OR ON THE TRANSFORMER BRACKET.
 - ALL METAL SURFACES TO BE LEFT UNPAINTED.
 - HANGER BRACKETS ITEM (8) SHALL BE 90° TO THE ALUMINIUM TUBING AND BOTH ENDS SHALL BE ALIGNED TO EACH OTHER AFTER ASSEMBLY. THE ASSEMBLED ARM SHALL SLIDE FREELY ON THE ADJUSTMENT BOLTS.
 - LEXAN SIGN PANELS TO BE PROVIDED BY OTHERS. (REF. DWG. No. Snp.-27, 910mm x 810mm RIGHT & LEFT.)
 - ALL WIRING TO BE IN FLEX ARMOR SHEATHING COMPLETE WITH 3/8" CONNECTORS & ANTISHORTS. EXCEPT FOR WIRING TO SODIUM LAMP SOCKET. ALL INTERNAL WIRING (EXCEPT BALLAST & SOCKET) TO BE 105° FLAMENOL WIRE.
 - UNIT SHALL BE COMPLETELY WIRED, READY FOR USE. ONE SOX 90W. SODIUM LAMP AND TWO 1/2"-13 STAINLESS STEEL DOG TOOTH BOLTS SHALL BE SUPPLIED BY CITY.
 - ITEM (14) SIDEWALL REINFORCING/STIFFENER PLATES SHALL BE STAINLESS STEEL AND (15) SODIUM LAMP BRACKET SHALL BE FABRICATED OF ALUMINIUM.
 - GASKET REQUIREMENTS
A - CLEAN SURFACE WITH STEEL WOOL & SOLVENT;
B - APPLY DOW CORNING SILICON SEALANT TO ALL EXTERNAL HARDWARES ON TOP SIDES PANELS AND FLANGES ON BOX;
C - APPLY PETROLEUM JELLY OR EQUAL AROUND ENTIRE PERIMETER OF EX-12 DOOR SECTIONS (AS SHOWN).
 - DOOR RETAINER ROD (11) TO BE STAINLESS STEEL ROD.
 - DIMENSION TOLERANCES ARE ± 1/16" UNLESS OTHERWISE SPECIFIED.
 - ADD DATE AND MANUFACTURE OF UNIT INSIDE OF RIGHT PANEL SECTION.
 - ALL WELDS SHALL CONFORM TO CANADIAN WELDING BUREAU STANDARDS.
 - SEAL ALL EXTERNAL MOUNTING HARDWARE WITH GREY OR CLEAR SILICONE SEALANT.
 - ROUGH EDGES FILE DOWN.
 - 1/2"x1/4" CLOSED CELL NEOPRENE GASKET MATERIAL TO BE INSTALLED IN CONTINUOUS STRIPS AROUND ENTIRE PERIMETER OF BOTH FRONT OPENING AND REAR (FIXED) DOOR FRAMES. (SEE NOTE 13 FOR APPLICATION PRECEDURE).

NOTE: FOR B.O.M SEE DWG ST-145 SHT 1 OF 3

TRAFFIC SIGNALS SYSTEM MANAGEMENT ENGINEER _____ DATE _____				SCALE 3/16"=1"
MANAGER OF TRANSPORTATION ENGINEERING _____ DATE _____				DRAWING NO. ST-145
DRAWN BY SW 200104.05. PRELIM. CHK. _____ DATE _____		DESIGNED BY _____	INTERNALLY ILLUMINATED PEDESTRIAN CORRIDOR SIGN UNIT 36" x 32" DETAIL DRAWING	DRAWING NO. ST-145
NO. DATE REVISIONS BY		CHECKED BY _____		2 OF 3