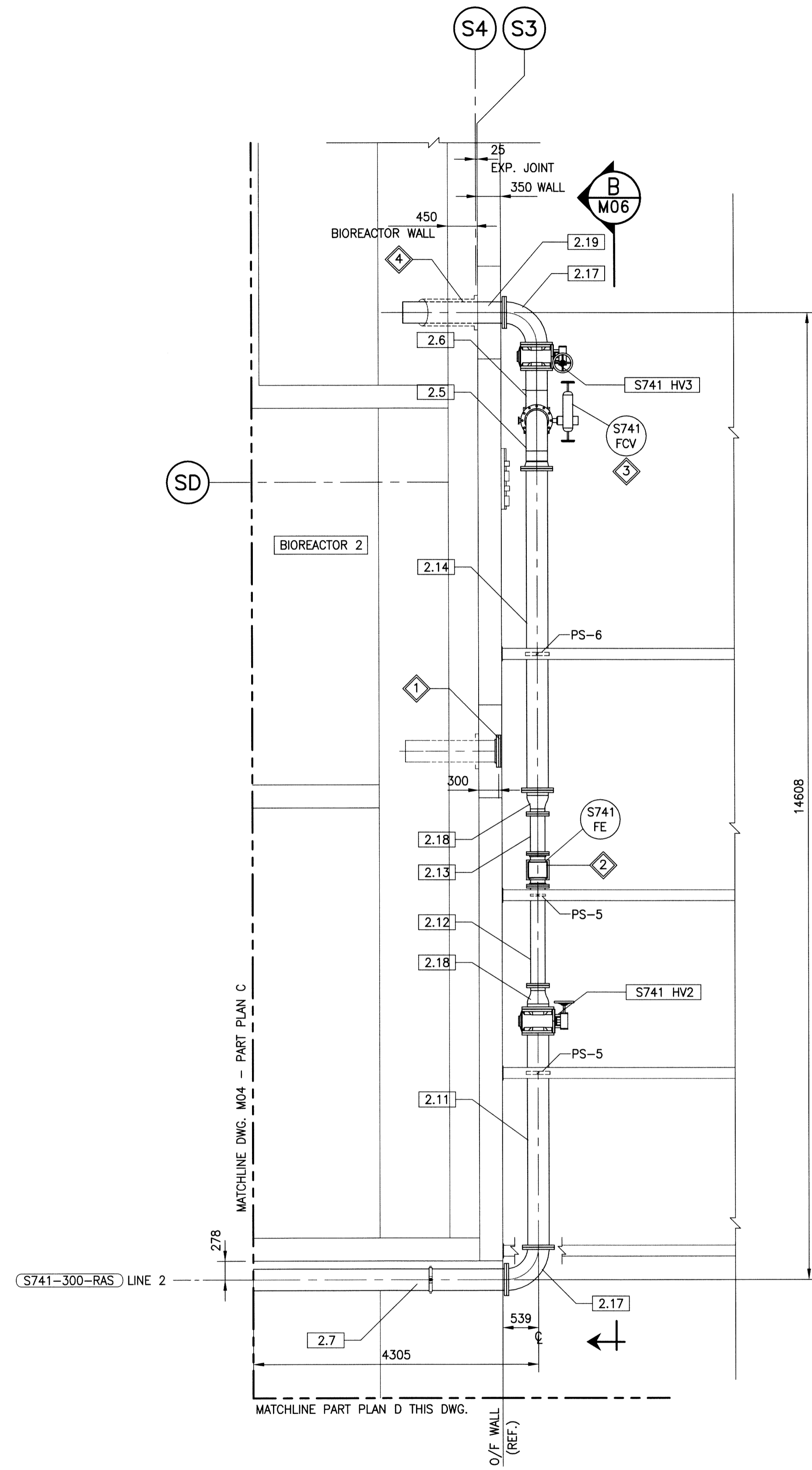


D
M02 PART PLAN
SCALE: 1:50



E
M02 PART PLAN
SCALE: 1:50

GENERAL NOTES:

- REFER TO GENERAL NOTES ON DWG. M02.

KEYNOTES:

- CUT EXISTING RAS PIPE AND INSTALL NEW SLIP-ON FLANGE AND BLIND FLANGE. EXISTING RAS PIPE THROUGH BIOREACTOR WALL TO REMAIN. PROVIDE NEW INTERIOR PIPE LINING IN ACCORDANCE WITH SPECIFICATIONS.
- RE-USE EXISTING FLOWMETER. PROVIDE NEW INSTRUMENTATION WIRING TO SUIT FLOWMETER RELOCATION.
- RE-USE EXISTING FLOW CONTROL VALVE ACTUATOR ON NEW VALVE BODY. PROVIDE NEW INSTRUMENTATION WIRING AND INSTRUMENT AIR TUBING TO SUIT RELOCATION OF FLOW CONTROL VALVE.
- NEW RAS PIPE THROUGH BIOREACTOR WALL. FOR DETAILS OF PIPE WALL PENETRATION, SEE DRAWING M08.

PIPE SUPPORTS

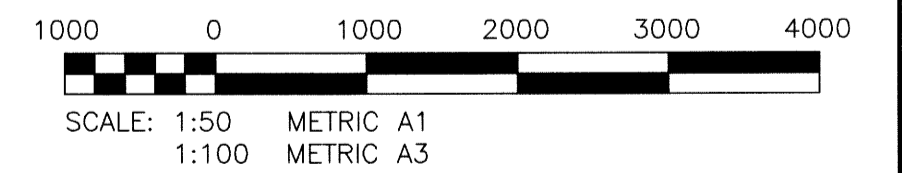
REFER TO DWG. M03 FOR PIPE SUPPORT DESCRIPTIONS.

PIPE SPOOL LIST

REFER TO DWG. M03.

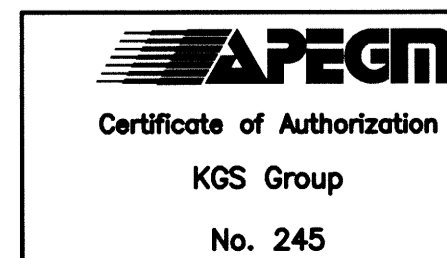
VALVE LIST

REFER TO DWG. M03.



METRIC

WHOLE NUMBERS INDICATE MILLIMETRES
DECIMALIZED NUMBERS INDICATE METRES



| | | | |
|---------------------------|----------|---------------------------|------------|
| FIELD BOOK #: | | | |
| POSTED TO LBIS | | | |
| DESIGNED BY | JS | CHECKED BY | <i>RP</i> |
| DRAWN BY | RP | APPROVED BY | <i>JS</i> |
| HOR. SCALE | AS NOTED | RELEASED FOR CONSTRUCTION | |
| VERTICAL SCALE | AS NOTED | | |
| 0 ISSUED FOR CONSTRUCTION | 15/09/17 | DATE | 2015 08 17 |
| NO. REVISIONS | DATE | BY | DATE |

KGS GROUP
CONSULTING ENGINEERS

ENGINEER'S SEAL

J.V. SMITH
 REGISTERED PROFESSIONAL ENGINEER

M05

THE CITY OF WINNIPEG
WATER AND WASTE DEPARTMENT

WEWPC RAS PIPE REPLACEMENT

MECHANICAL
RAS PIPING - PART PLAN

SHEET 3 OF 3
CITY DRAWING NUMBER
1-0103S-M0032-003