

ELEVATION

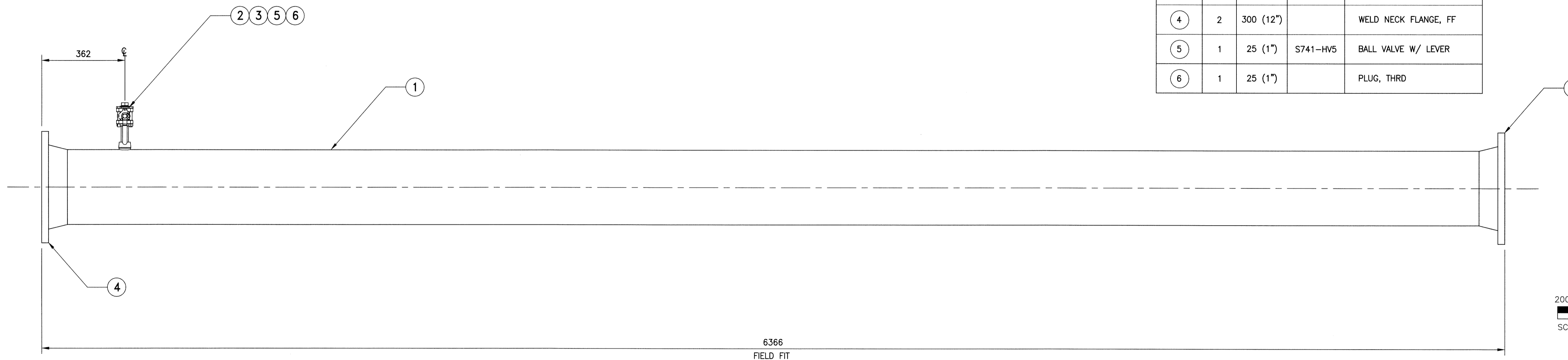
PIPE SPOOL 1.1
SCALE: 1:10

BILL OF MATERIALS - 1.1

PART NO.	QTY	SIZE	TAG	DESCRIPTION
1	1	300 (12")		PIPE
2	1	25 (1")		NIPPLE, 75mm (3") LG.
3	1	25 (1")		THREDOLET
4	2	300 (12")		WELD NECK FLANGE, FF
5	1	25 (1")	S740-HV5	BALL VALVE W/ LEVER
6	1	25 (1")		PLUG, THRD

GENERAL NOTES:

1. REFER TO GENERAL NOTES ON DWG. M02.

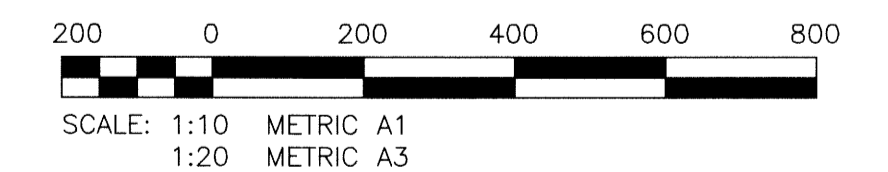


ELEVATION

PIPE SPOOL 2.1
SCALE: 1:10

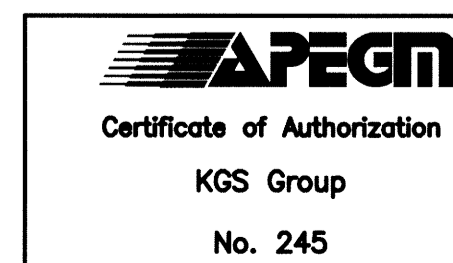
BILL OF MATERIALS - 2.1

PART NO.	QTY	SIZE	TAG	DESCRIPTION
1	1	300 (12")		PIPE
2	1	25 (1")		NIPPLE, 75mm (3") LG.
3	1	25 (1")		THREDOLET
4	2	300 (12")		WELD NECK FLANGE, FF
5	1	25 (1")	S741-HV5	BALL VALVE W/ LEVER
6	1	25 (1")		PLUG, THRD



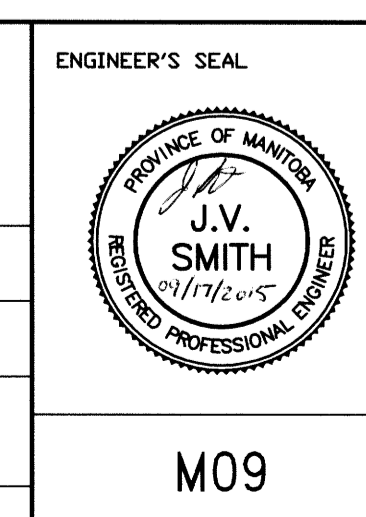
METRIC

WHOLE NUMBERS INDICATE MILLIMETRES
DECIMALIZED NUMBERS INDICATE METRES



FIELD BOOK #:	
POSTED TO LBIS	
NO.	REVISIONS
	DATE
	BY

KGS GROUP CONSULTING ENGINEERS	
DESIGNED BY JS	CHECKED BY <i>RP</i>
DRAWN BY RP	APPROVED BY <i>JS</i>
HDR. SCALE AS NOTED	RELEASED FOR CONSTRUCTION
VERTICAL AS NOTED	
DATE 2015 08 17	DATE 2015/09/17



THE CITY OF WINNIPEG
WATER AND WASTE DEPARTMENT

WEWPC RAS PIPE REPLACEMENT

MECHANICAL
RAS PIPING - PIPE SPOOL DETAILS

SHEET 1 OF 5
CITY DRAWING NUMBER
1-0103S-M0036-001