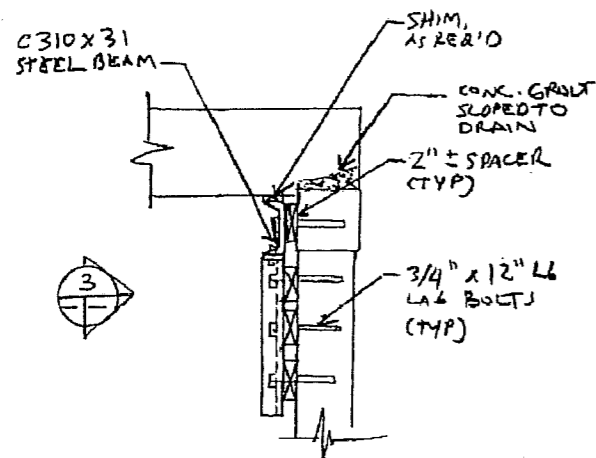
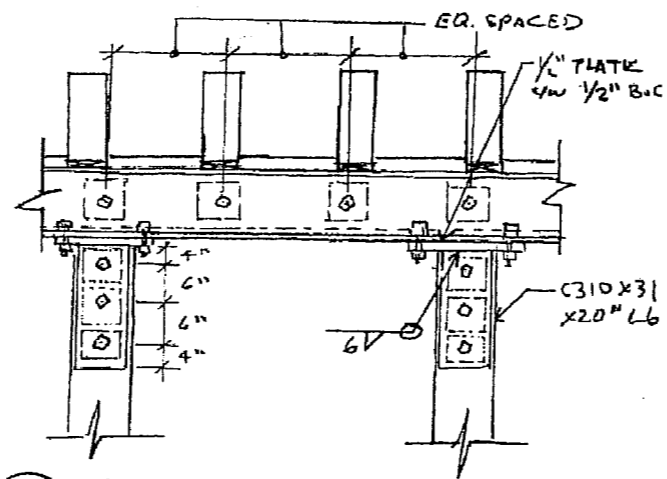


1 PLAN
N.T.S.

- EXIST. 2' x 4" TIMBER DECK, ASPHALT W/S AND GUARDRAIL NOT SHOWN FOR CLARITY.
- STEEL BEAM MAY BE SPLICED TO REDUCE WEIGHT INTO MANAGEABLE PIECES.



2 SECTION
N.T.S.



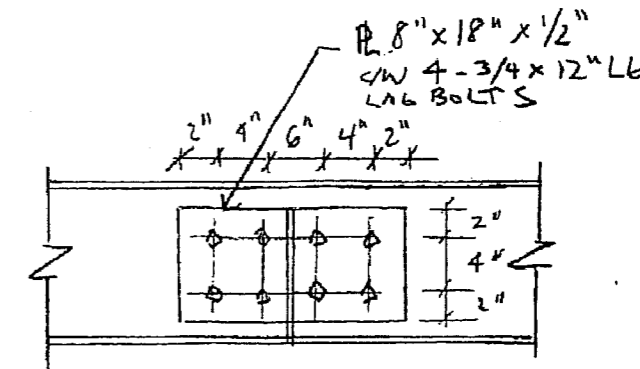
3 ELEVATION
N.T.S.

NOTES:

1. DO NOT SCALE DRAWINGS. TAKE FIELD MEASUREMENTS AS IS NECESSARY.
2. REPORT ANY UNSOUND CONDITIONS TO ENGINEER IMMEDIATELY. TAKE PRECAUTIONS TO ENSURE SAFETY OF WORKERS AND PUBLIC.
3. STEEL: TO CSA G40.21, GRADE 300W OR 350W, PRIMED RED.
4. LAG SCREWS: TO CSA B34, GALV. DRILL 1/2" Ø LEAD HOLES FOR 3/4" Ø LAG SCREWS.
5. SHIMS AND SPACERS: PRESSURE TREATED PLYWOOD OR HARDWOOD OR AS OTHERWISE APPROVED.

EAST ABUTMENT CAP REPAIR PROCEDURE:

1. REMOVE EXISTING TIMBER PILE STRAP BOLTS & STRAPS.
2. INSTALL SHIMS ON SIDE OF CAP AND PILES.
3. INSTALL NEW C310 X 31 BEAM.
4. INSTALL NEW C310 X 31 PILE POSTS.
5. SHIM EXISTING STRINGERS TIGHT TO NEW C310 X 31 BEAM.
6. FILL CRAULS IN EXIST. TIMBER CAP WITH CONCRETE GROUT AND SLOPE TO DRAIN.



4 SPLICE DETAIL
N.T.S.



THE CITY OF WINNIPEG
PUBLIC WORKS DEPARTMENT
ENGINEERING DIVISION
BRIDGE OPERATIONS BRANCH
106 - 1155 PACIFIC AVE

SASKATCHEWAN AVE T.B. (OMAND'S CREEK)
EAST ABUTMENT PILE CAP REPAIR

DESIGNED BY: DNB	DRAWN BY: DNB	DWG NO: B144-09-01
CHECKED BY: DNB	DATE: OCT 15/2009	