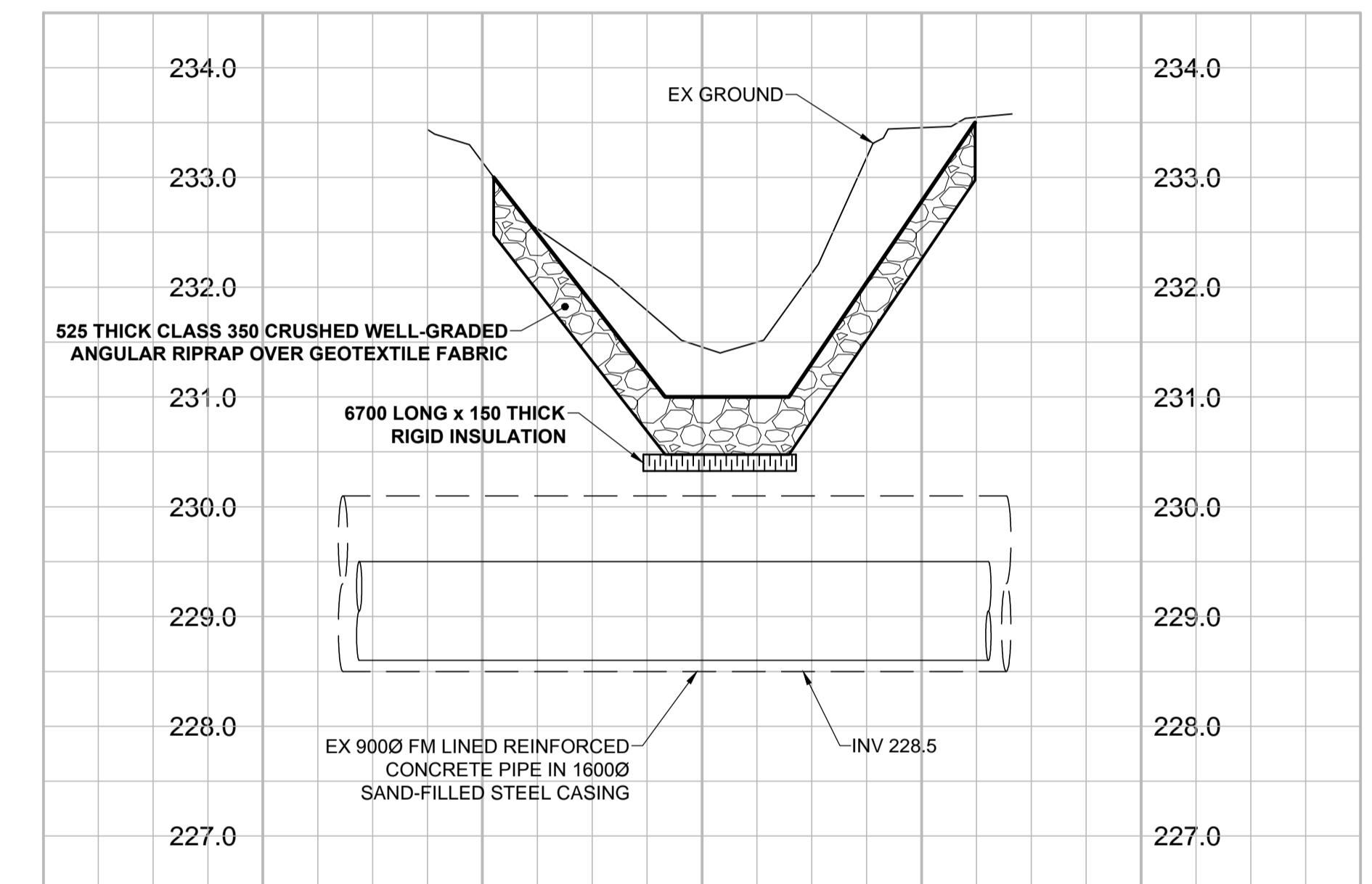
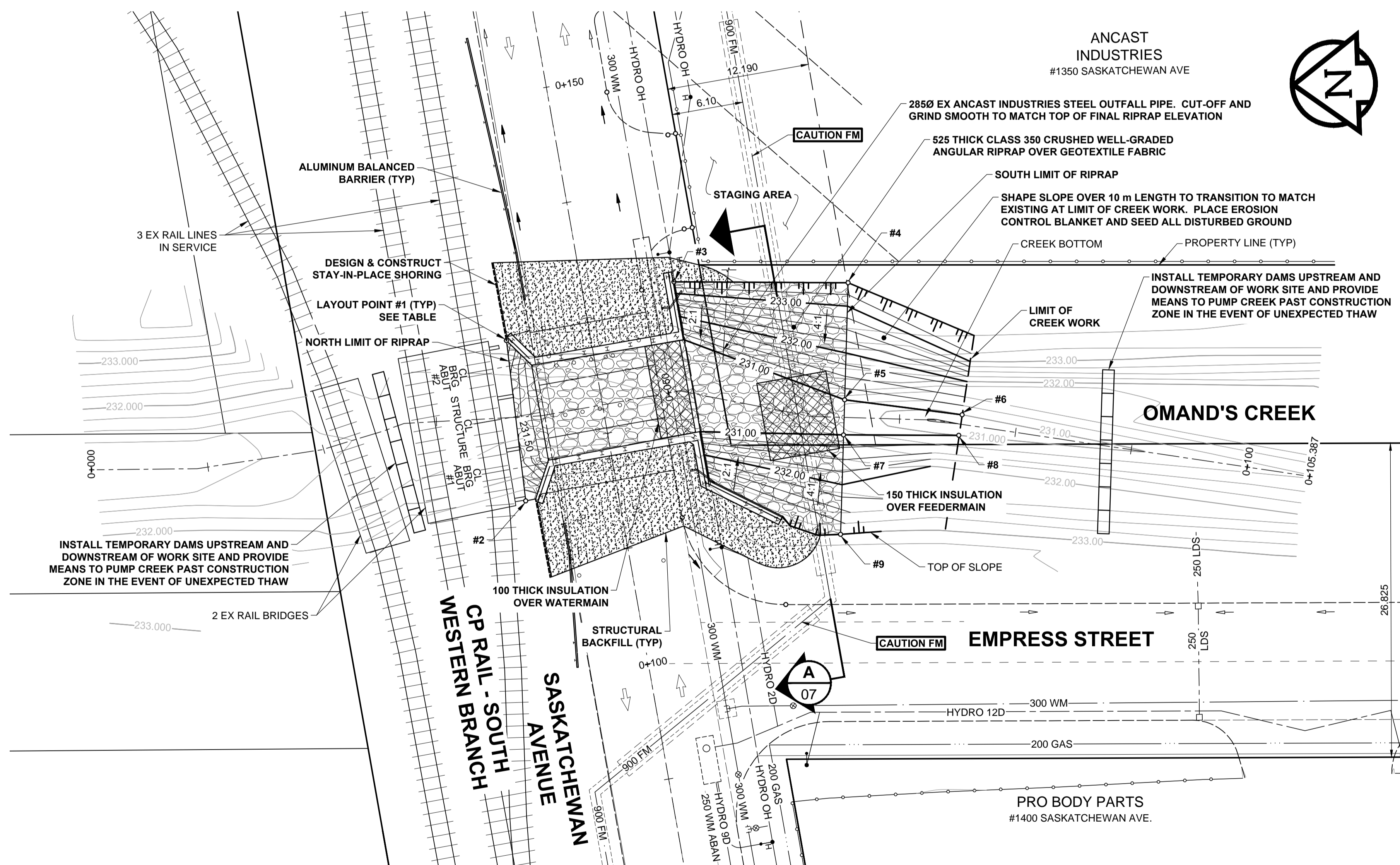


CREEK LAYOUT - COORDINATE TABLE			
NUMBER	NORTHING	EASTING	ELEVATION
1	10644.303	10408.421	± 233.840
2	10643.074	10394.689	± 233.190
3	10629.833	10412.998	233.500
4	10614.949	10412.451	233.500
5	10615.560	10402.470	231.000
6	10605.560	10400.880	231.000
7	10615.744	10399.476	231.000
8	10605.903	10399.134	231.000
9	10616.263	10390.995	233.000



**METRIC**  
WHOLE NUMBERS INDICATE MILLIMETRES  
DECIMALIZED NUMBERS INDICATE METRES

EXISTING	LEGEND - PLAN	NEW	EXISTING	LEGEND - PLAN	NEW	EXISTING	LEGEND - PLAN	NEW
---	GAS	---	○	MANHOLE	●	---	CONCRETE PAVEMENT	---
---	MTS	---	□	CATCH BASIN/CATCH PIT	■	---	CONC SIDEWALK/MEDIAN	---
---	HYDRO	---	△	CURB INLET WITH BOX	▲	---	ASPHALT PAVEMENT	---
---	CATV / FIBRE OPTIC	---	⊙	TREE	⊙	---	PAVING STONE	---
---	TRAFFIC SIGNALS / PIT	---	⊕-12	TEST HOLE	⊕	---	GRAVEL	---
---	LAND DRAINAGE SEWER	---	⊕	PROPERTY LINE	---	---	RAMP CURB	---
---	WWS/CS SEWER	---	⊕	SURVEY BAR	---	---	PLANING / REMOVAL	---
---	CB LEAD	---	---	FENCE	---	---		---
---	WATERMAIN	---	---	BOC/EDGE OF PAVEMENT	---	---		---
---	SUBDRAIN	---	33.000	ELEVATION	(33.333)	---		---
---	DITCH	---	---	TRAFFIC SIGN	---	---		---

**LOCATION APPROVED**  
UNDERGROUND STRUCTURES  
DATE COMMITTEE

NOTE:  
LOCATION OF UNDERGROUND STRUCTURES AS SHOWN ARE BASED ON THE BEST INFORMATION AVAILABLE BUT NO GUARANTEE IS GIVEN THAT ALL EXISTING UTILITIES ARE SHOWN OR THAT THE GIVEN LOCATIONS ARE EXACT. CONFIRMATION OF EXISTENCE AND EXACT LOCATION OF ALL SERVICES MUST BE OBTAINED FROM THE INDIVIDUAL UTILITIES BEFORE PROCEEDING WITH CONSTRUCTION.

NO.	REVISIONS	DATE	BY
0	ISSUED FOR TENDER	15/10/22	JGK

DESIGNED BY	CHECKED BY
JGK	DAN
DRAWN BY	APPROVED BY
DML	BE
HOR. SCALE	DATE
AS SHOWN	15/10/22
VERT. SCALE	DATE
AS SHOWN	15/10/22
DATE	BY
15/04/24	JGK

**APCGM**  
Certificate of Authorization  
MORRISON HERSHFIELD  
No. 1736

PROFESSIONAL'S SEAL  
PROVINCE OF MANITOBA  
REGISTERED PROFESSIONAL ENGINEER  
J.G. KENNEDY  
ORIGINAL SIGNED  
15/10/22  
22326

**THE CITY OF WINNIPEG**  
PUBLIC WORKS DEPARTMENT  
ENGINEERING DIVISION

**SASKATCHEWAN AVENUE AT OMAND'S CREEK**  
BRIDGE REPLACEMENT

CITY DRAWING NUMBER: B144-16-07  
SHEET 07 OF 18  
DRAWING No. REV 07 0

CREEK WORK

BID OPPORTUNITY No. 775-2015