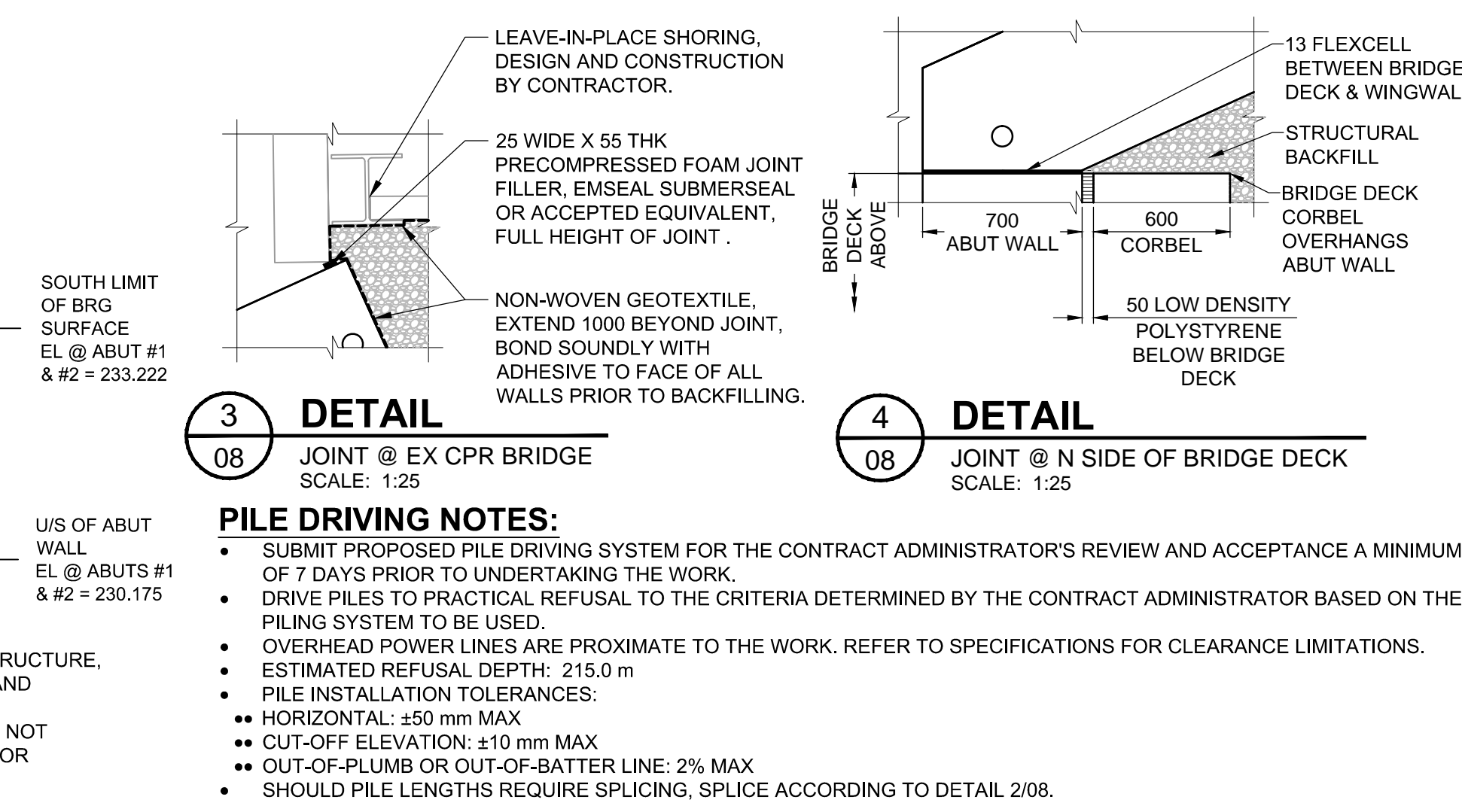
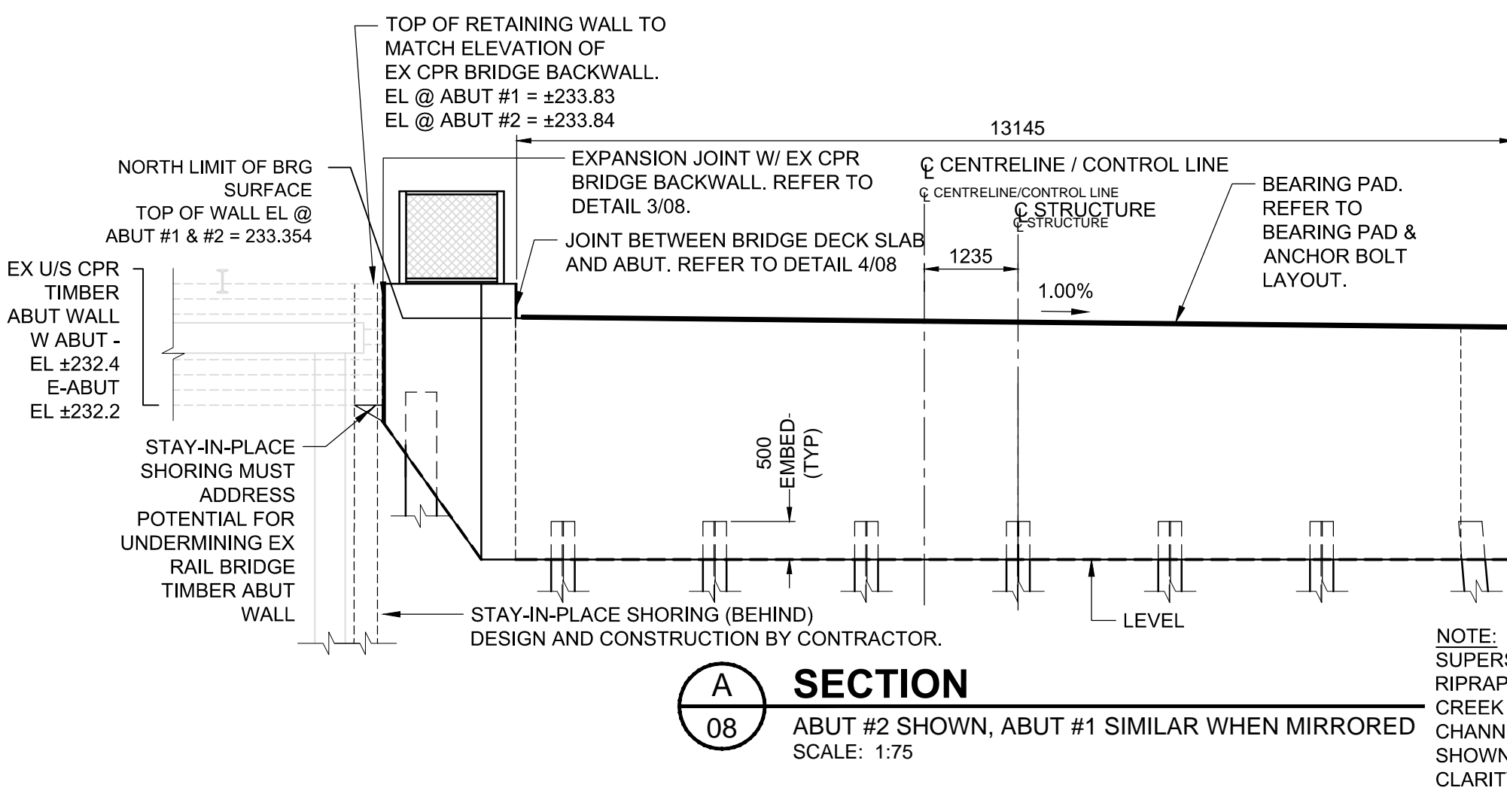
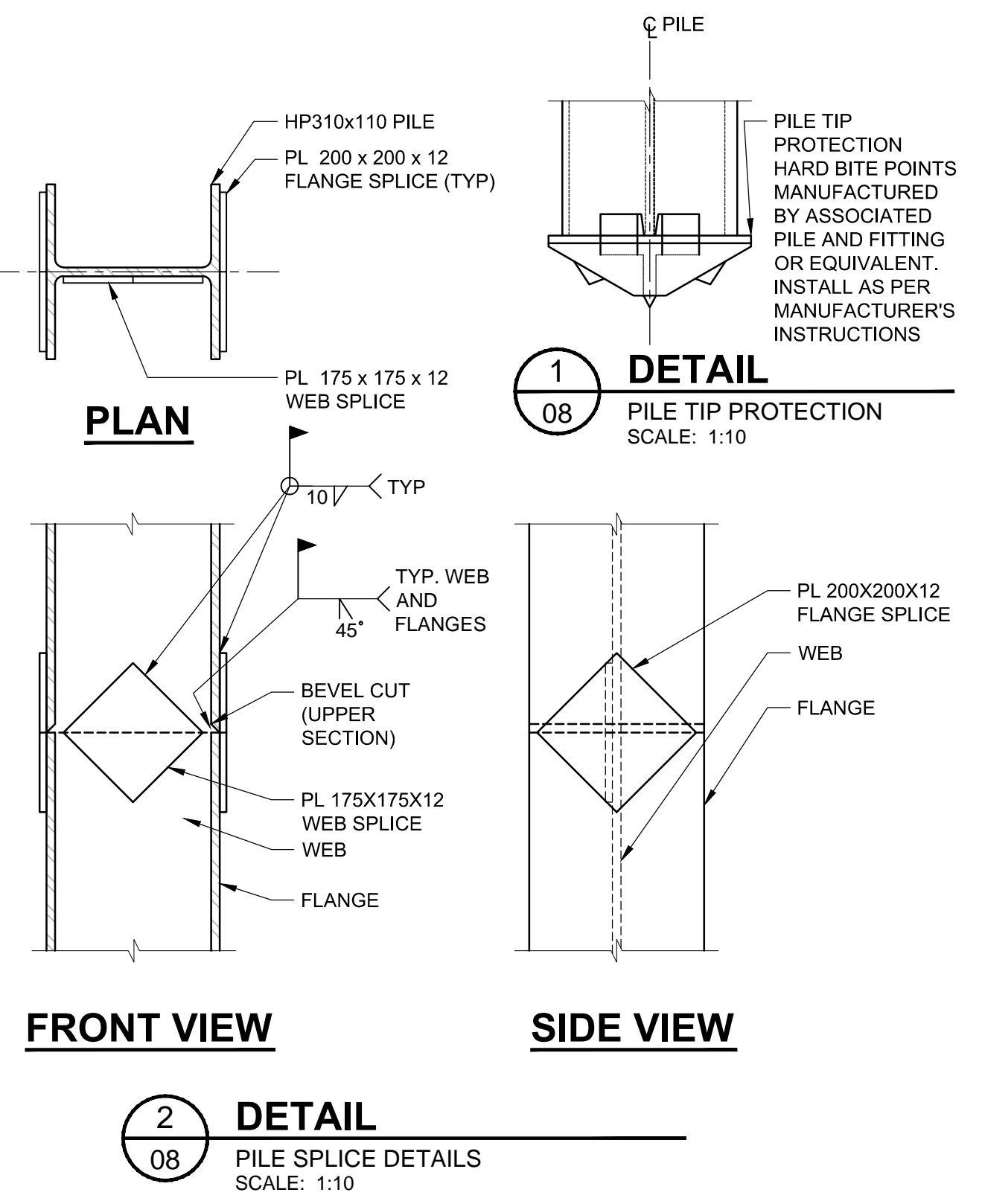


**BEARING PLAN & ANCHOR ROD LAYOUT**  
SCALE 1:75

PILE LENGTH TABLE			
PILE ID	STRAIGHT/BATTERED	CUT-OFF ELEVATION (m)	PILE LENGTH (ESTIMATE) (m)
P1	STR	232.575	17.575
P2	STR	230.675	15.675
P3	STR	230.675	15.675
P4	STR	230.675	15.675
P5	STR	230.675	15.675
P6	STR	230.675	15.675
P7	STR	230.675	15.675
P8	BAT @ 6:1	230.675	15.891
P9	BAT @ 6:1	232.368	17.608
P10	STR	232.368	17.368
P11	STR	232.368	17.368
P12	STR	232.368	17.368
P13	STR	232.400	17.575
P14	STR	230.675	15.675
P15	STR	230.675	15.675
P16	STR	230.675	15.675
P17	STR	230.675	15.675
P18	STR	230.675	15.675
P19	STR	230.675	15.675
P20	BAT @ 6:1	230.675	15.891
P21	BAT @ 6:1	233.000	18.000
TOTAL PILE LENGTH (m):			342.74



- PILE DRIVING NOTES:**
- SUBMIT PROPOSED PILE DRIVING SYSTEM FOR THE CONTRACT ADMINISTRATOR'S REVIEW AND ACCEPTANCE A MINIMUM OF 7 DAYS PRIOR TO UNDERTAKING THE WORK.
  - DRIVE PILES TO PRACTICAL REFUSAL TO THE CRITERIA DETERMINED BY THE CONTRACT ADMINISTRATOR BASED ON THE PILING SYSTEM TO BE USED.
  - OVERHEAD POWER LINES ARE PROXIMATE TO THE WORK. REFER TO SPECIFICATIONS FOR CLEARANCE LIMITATIONS.
  - ESTIMATED REFUSAL DEPTH: 215.0 m
  - PILE INSTALLATION TOLERANCES:
    - HORIZONTAL: ±50 mm MAX
    - CUT-OFF ELEVATION: ±10 mm MAX
    - OUT-OF-PLUMB OR OUT-OF-BATTER LINE: 2% MAX
  - SHOULD PILE LENGTHS REQUIRE SPLICING, SPLICE ACCORDING TO DETAIL 2/08.

**LOCATION APPROVED**  
UNDERGROUND STRUCTURES

SUPR. U/G STRUCTURES COMMITTEE DATE

NOTE: LOCATION OF UNDERGROUND STRUCTURES AS SHOWN ARE BASED ON THE BEST INFORMATION AVAILABLE BUT NO GUARANTEE IS GIVEN THAT ALL EXISTING UTILITIES ARE SHOWN OR THAT THE GIVEN LOCATIONS ARE EXACT. CONFIRMATION OF EXISTENCE AND EXACT LOCATION OF ALL SERVICES MUST BE OBTAINED FROM THE INDIVIDUAL UTILITIES BEFORE PROCEEDING WITH CONSTRUCTION.

No.	ISSUED FOR TENDER	DATE	BY
0	ISSUED FOR TENDER	15/10/22	DAN
	REVISIONS	YYMMDD	BY

**MORRISON HERSHFIELD**

DESIGNED BY DAN  
DRAWN BY DML  
HOR. SCALE AS SHOWN  
VERT. SCALE AS SHOWN  
DATE 15/04/24

CHECKED BY SAL  
APPROVED BY BE  
ACCEPTED BY ORIGINAL DRAWING SIGNED BY D.N. BURMEY, P.ENG.  
DATE 15/10/22  
D.N. BURMEY, P.ENG. BRIDGE PROJECTS ENGINEER

PROFESSIONAL'S SEAL

PROVINCE OF MANITOBA  
D.A. NEILSON  
ORIGINAL SIGNED 15/10/22  
REGISTERED PROFESSIONAL ENGINEER

**THE CITY OF WINNIPEG**  
PUBLIC WORKS DEPARTMENT  
ENGINEERING DIVISION

**SASKATCHEWAN AVENUE AT OMAND'S CREEK BRIDGE REPLACEMENT**

FOUNDATIONS & SUBSTRUCTURE I

CITY DRAWING NUMBER B144-16-08  
SHEET 08 OF 18  
DRAWING No. 08  
REV 0

**APCGM**  
Certificate of Authorization  
MORRISON HERSHFIELD  
No. 1736

**METRIC**  
WHOLE NUMBERS INDICATE MILLIMETRES  
DECIMALIZED NUMBERS INDICATE METRES