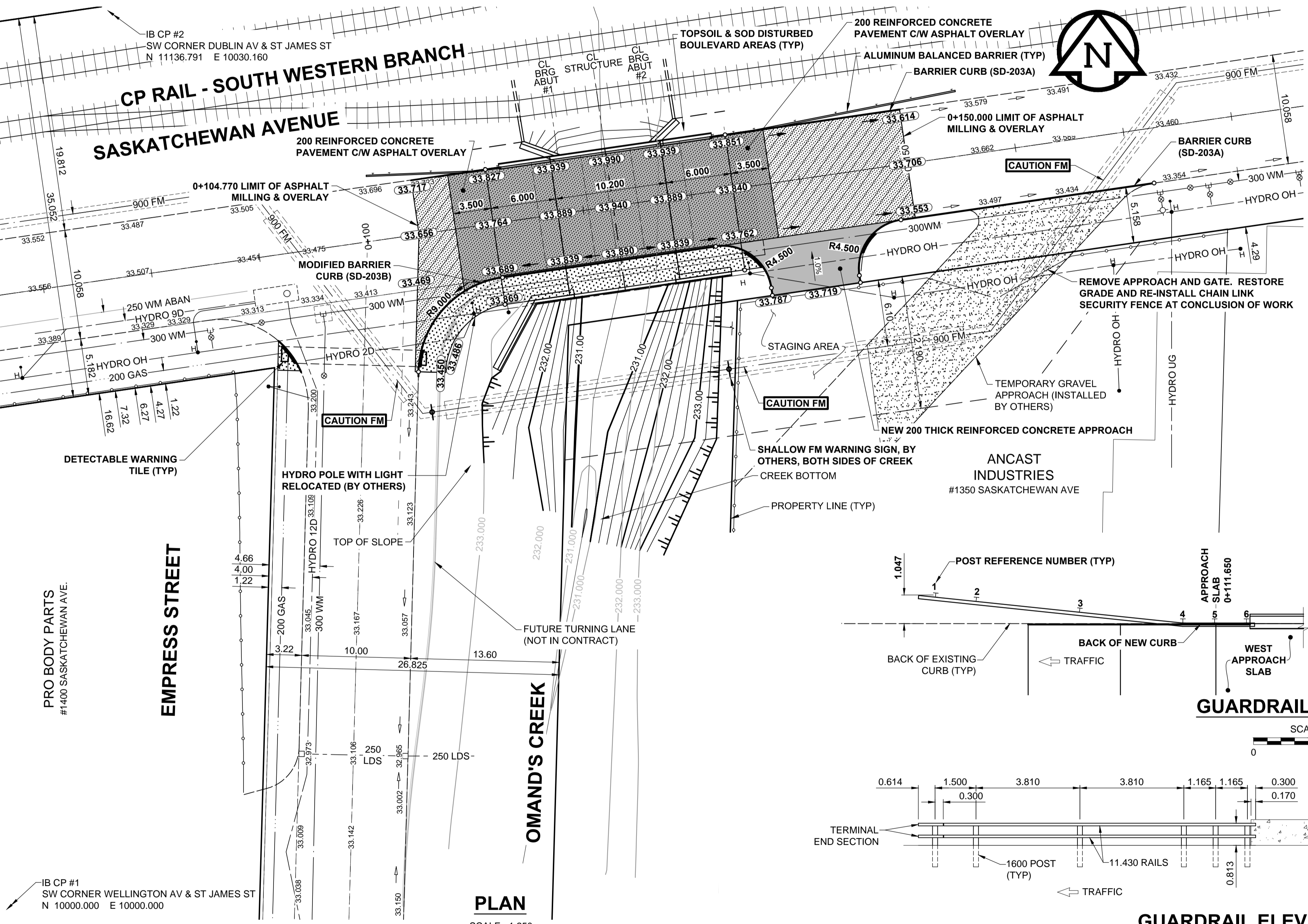
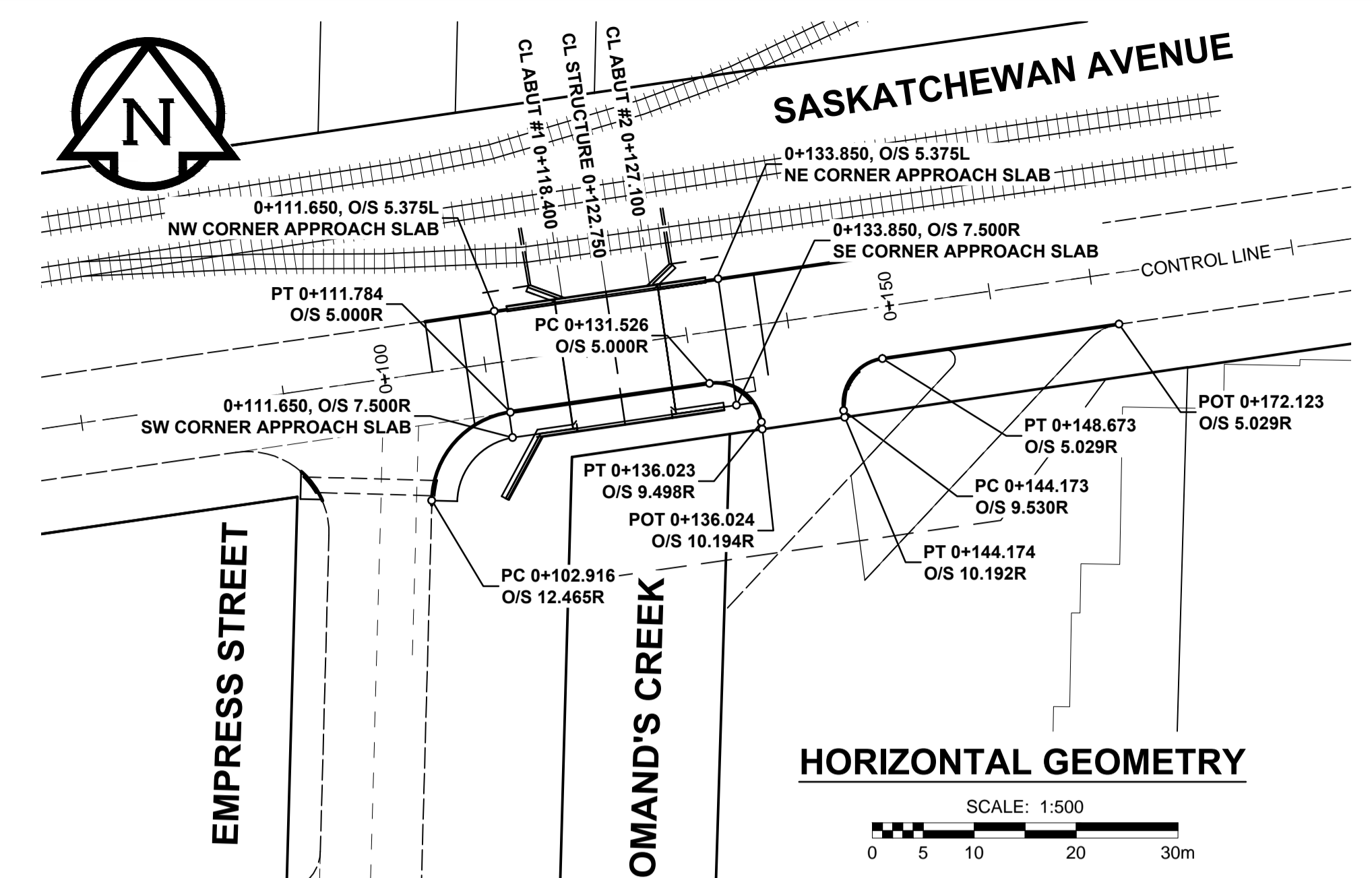
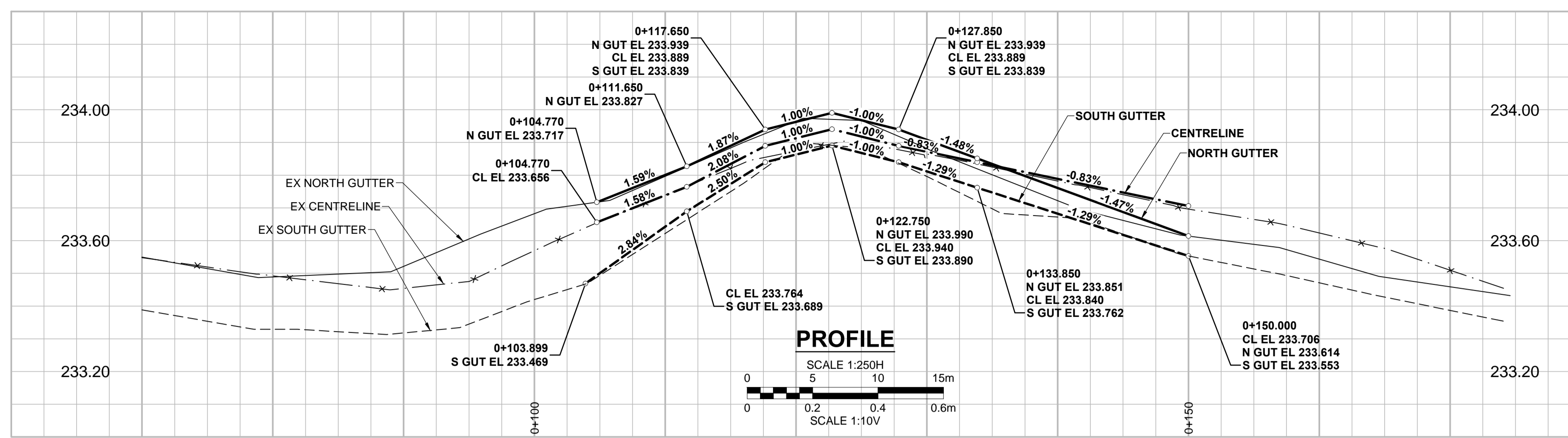


A1 SIZE 894mm x 841mm
PLOT: 10/23/2015 10:59:43 AM
FILE NAME: W150005-Plan-16.dwg Saved By: diane

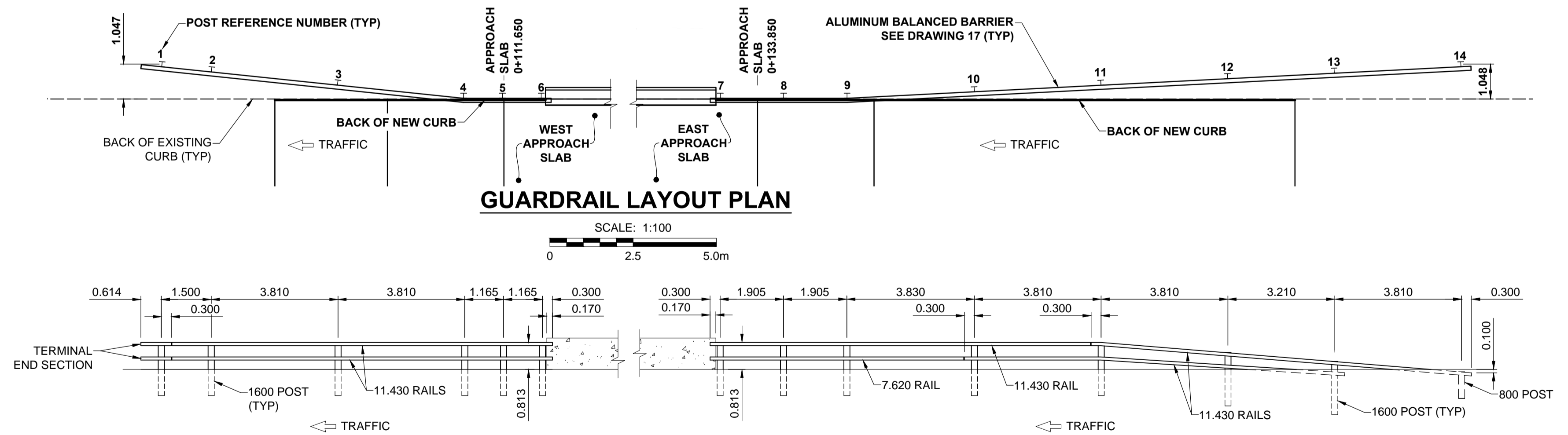


CENTER OF POST LAYOUT TABLE		
POST #	STATION	OFFSET
1	0+101.377	-6.076 L
2	0+102.869	-5.920 L
3	0+106.659	-5.524 L
4	0+110.440	-5.128 L
5	0+111.605	-5.128 L
6	0+112.770	-5.128 L
7	0+132.730	-5.128 L
8	0+134.635	-5.128 L
9	0+136.540	-5.128 L
10	0+140.361	-5.325 L
11	0+144.166	-5.520 L
12	0+147.971	-5.716 L
13	0+151.176	-5.881 L
14	0+154.981	-6.077 L

CONTROL LINE - COORDINATES		
NAME	NORTHING	EASTING
POT 0+100.000	10633.039	10380.464
POT 0+150.000	10640.219	10429.946

BILL OF MATERIALS - APPROACH GUARDRAILS		
BARRIER RAIL	11430 LONG	5
BARRIER RAIL	7620 LONG	1
STANDARD SPLICE BAR		4
BARRIER POST	1600 LONG	13
BARRIER POST	800 LONG	1
TERMINAL END SECTION		2
RAIL CLAMP BAR		54
13-13x25 SS HEX HEAD CAP SCREWS		124
27-0dX14 1dX2 TH SS WASHERS		124
RAIL END CAPS		6
ALUMINUM SHIMS		AS REQ'D

NOTES:
1. POST OFFSETS ARE MEASURED PERPENDICULAR TO CONTROL LINE TO CENTER OF POST.



METRIC
WHOLE NUMBERS INDICATE MILLIMETRES
DECIMALIZED NUMBERS INDICATE METRES

EXISTING	LEGEND - PLAN	NEW	EXISTING	LEGEND - PLAN	NEW	EXISTING	LEGEND - PLAN	NEW	
	GAS		MANHOLE		CONCRETE PAVEMENT		LOCATION APPROVED		BM ELEV
	MTS		CATCH BASIN/CATCH PIT		CONC SIDEWALK/MEDIAN		SUPR. UG STRUCTURES		SW. COR. FOUNDATION
	HYDRO		CURB INLET WITH BOX		ASPHALT PAVEMENT		DATE COMMITTEE		SW. COR. FOUNDATION
	CATV / FIBRE OPTIC		TREE		PAVING STONE		NOTE:		SW. COR. FOUNDATION
	TRAFFIC SIGNALS / PIT		TEST HOLE		GRAVEL		LOCATION OF UNDERGROUND STRUCTURES		SW. COR. FOUNDATION
	LAND DRAINAGE SEWER		PROPERTY LINE		RAMP CURB		AS SHOWN ON THE BEST INFORMATION AVAILABLE BUT NO GUARANTEE IS GIVEN THAT ALL EXISTING UTILITIES ARE SHOWN OR THAT THE GIVEN LOCATIONS ARE EXACT. CONFIRMATION OF EXISTENCE AND EXACT LOCATION OF ALL SERVICES MUST BE OBTAINED FROM THE INDIVIDUAL UTILITIES BEFORE PROCEEDING WITH CONSTRUCTION.		SW. COR. FOUNDATION
	WWS/CS SEWER		SURVEY BAR		PLANING / REMOVAL		DATE		SW. COR. FOUNDATION
	CB LEAD		FENCE				DATE		SW. COR. FOUNDATION
	WATERMAIN		BOC/EDGE OF PAVEMENT				DATE		SW. COR. FOUNDATION
	SUBDRAIN		ELEVATION (33.333)				DATE		SW. COR. FOUNDATION
	DITCH		TRAFFIC SIGN				DATE		SW. COR. FOUNDATION

LOCATION APPROVED
UNDERGROUND STRUCTURES
DATE COMMITTEE
NOTE:
LOCATION OF UNDERGROUND STRUCTURES AS SHOWN ARE BASED ON THE BEST INFORMATION AVAILABLE BUT NO GUARANTEE IS GIVEN THAT ALL EXISTING UTILITIES ARE SHOWN OR THAT THE GIVEN LOCATIONS ARE EXACT. CONFIRMATION OF EXISTENCE AND EXACT LOCATION OF ALL SERVICES MUST BE OBTAINED FROM THE INDIVIDUAL UTILITIES BEFORE PROCEEDING WITH CONSTRUCTION.

NO.	REVISIONS	DATE	BY
0	ISSUED FOR TENDER	15/10/22	JGK

MORRISON HERSHFIELD
DESIGNED BY: JGK
CHECKED BY: DAN
DRAWN BY: DML
APPROVED BY: BE
HOR. SCALE: AS SHOWN
VERT. SCALE: AS SHOWN
DATE: 15/04/24

APCGM
Certificate of Authorization
MORRISON HERSHFIELD
No. 1736

THE CITY OF WINNIPEG
PUBLIC WORKS DEPARTMENT
ENGINEERING DIVISION
SASKATCHEWAN AVENUE AT OMAND'S CREEK
BRIDGE REPLACEMENT
CITY DRAWING NUMBER: B144-16-16
SHEET 16 OF 18
DRAWING No. 16
REV 0

BID OPPORTUNITY No. 775-2015