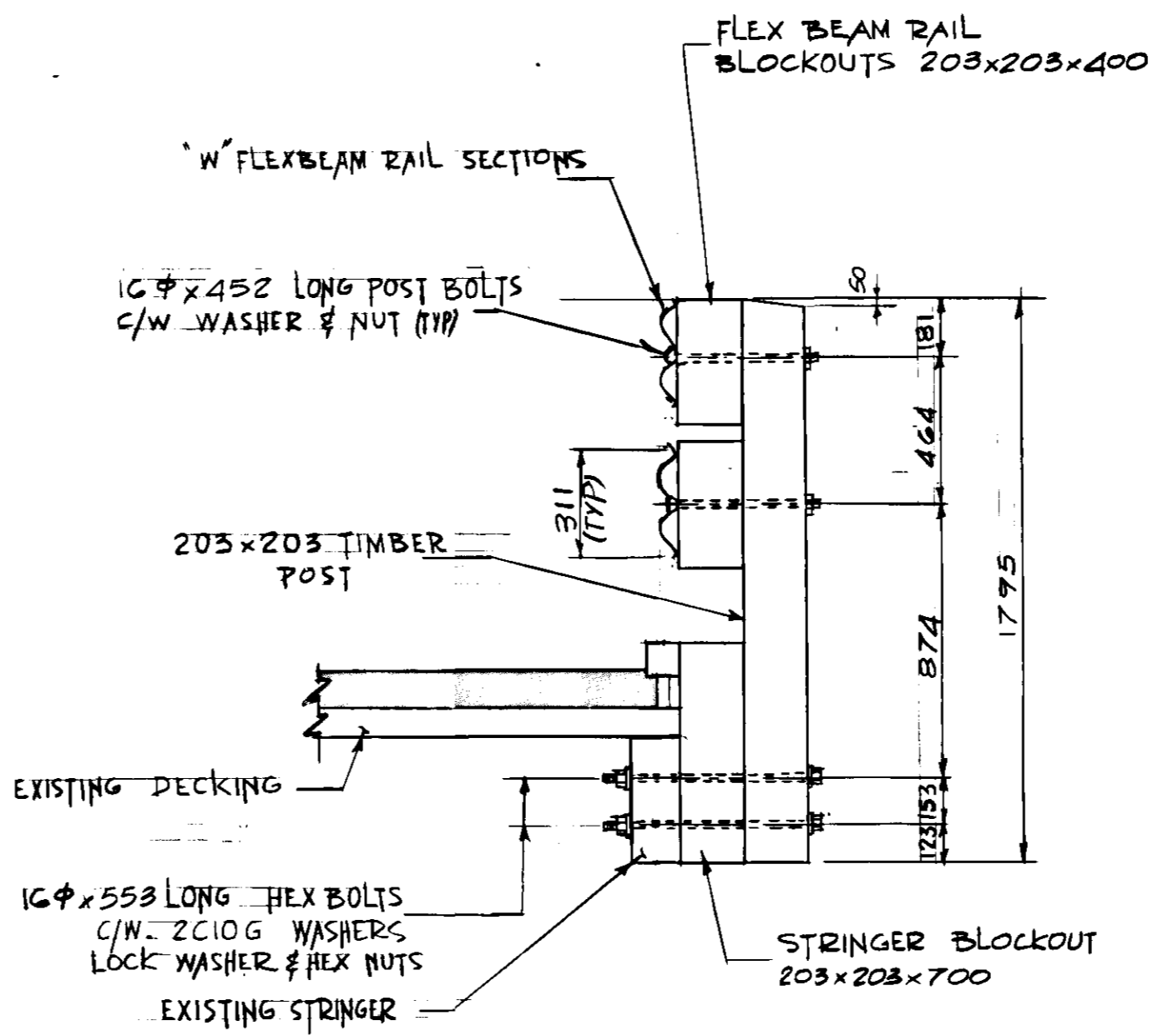
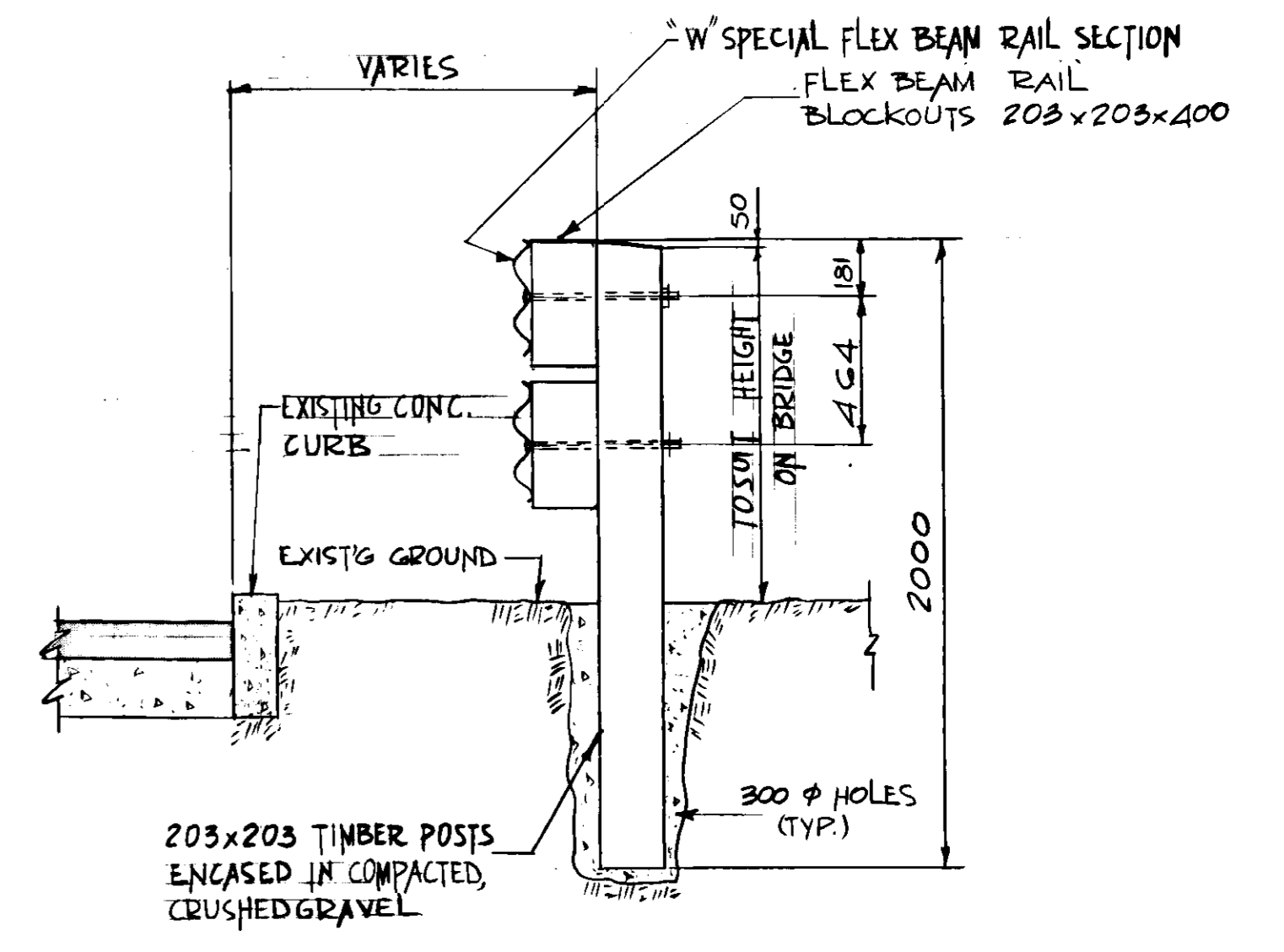


SITE PLAN  
SCALE = 1:200



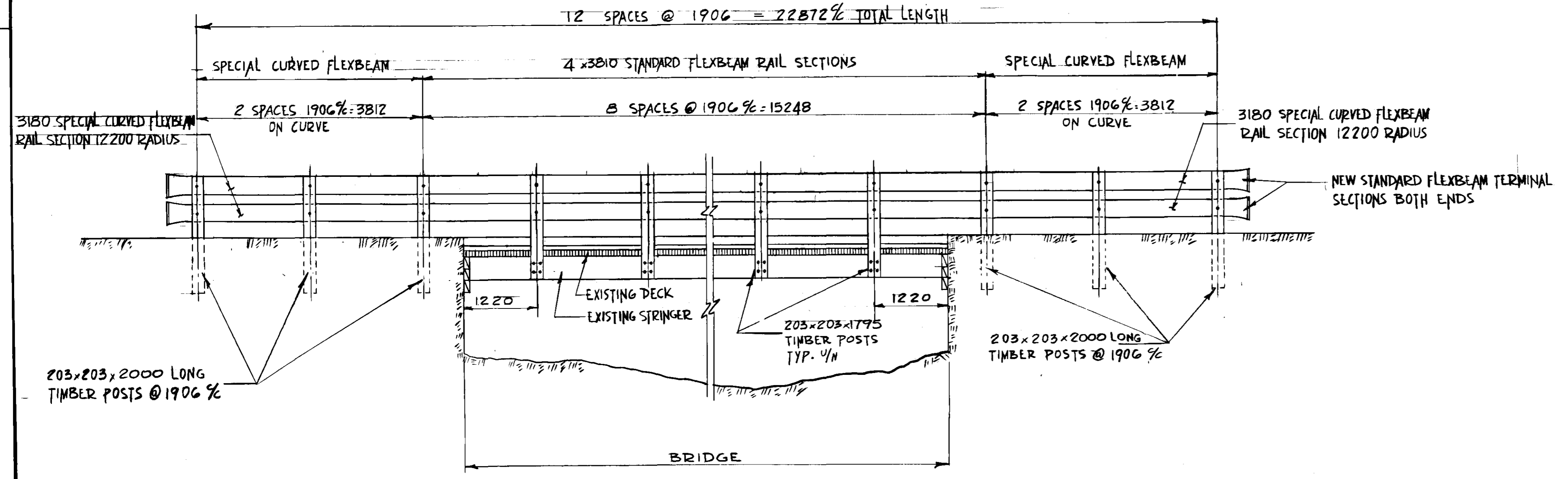
1 SECTION  
SCALE = 1:20



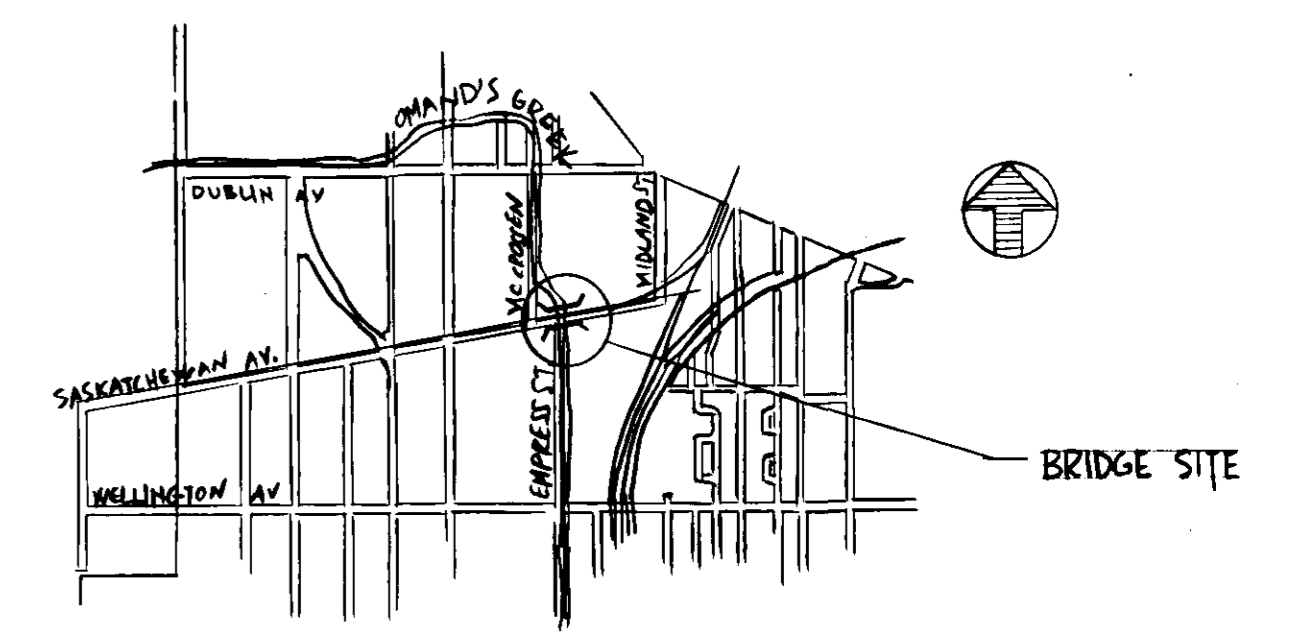
2 SECTION  
SCALE = 1:20

BILL OF MATERIALS  
(SUPPLIED BY CITY)

1. TIMBER POSTS 203x203
2. TIMBER FOR FLEXBEAM POST BLOCKOUTS AND STRINGER BLOCKOUTS. (TO BE CUT TO SIZE BY CONTRACTOR)
3. GALVANIZED FLEX BEAM GUARDRAILING (STRAIGHT AND CURVED)



3 NORTH ELEVATION  
SCALE = 1:50

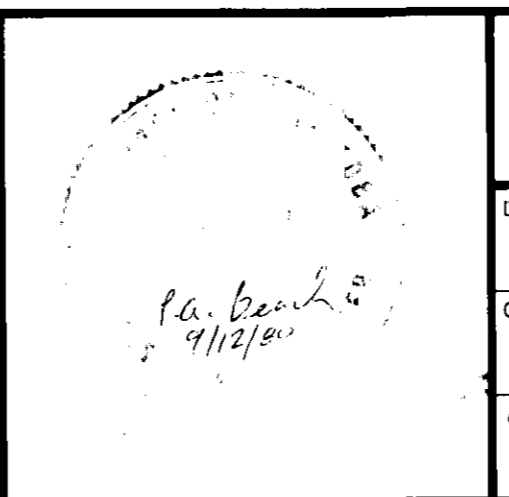


SITE PLAN

B-5285

METRIC  
WHOLE NUMBERS INDICATE MILLIMETRES  
DECIMALIZED NUMBERS INDICATE METRES

AS BUILT	81-07-14	66
No	REVISIONS	DATE APP.



<b>Reid, Crowther &amp; Partners Limited</b> CONSULTING ENGINEERS AND PLANNERS VANCOUVER CALGARY EDMONTON REGINA WINNIPEG TORONTO OTTAWA WHITEHORSE YELLOWKNIFE RED DEER BRANCON	
DESIGNED BY P. A. B	DRAWN BY G. A. S
CHECKED BY W. J. M	DATE AUG 80
APPROVED BY <i>[Signature]</i>	DATE Sept 10/80

**THE CITY OF WINNIPEG**  
WORKS & OPERATIONS DIVISION  
STREETS AND TRANSPORTATION DEPARTMENT

1981 TRAFFIC BARRIER REPAIRS SASKATCHEWAN AVE. AT OMAND'S CREEK	
AUTHORIZED BY <i>[Signature]</i>	DATE 8-11-80
ACCEPTED BY <i>[Signature]</i>	DATE 9-09-80
SCALE AS SHOWN	DRAWING NO. B144-81-01