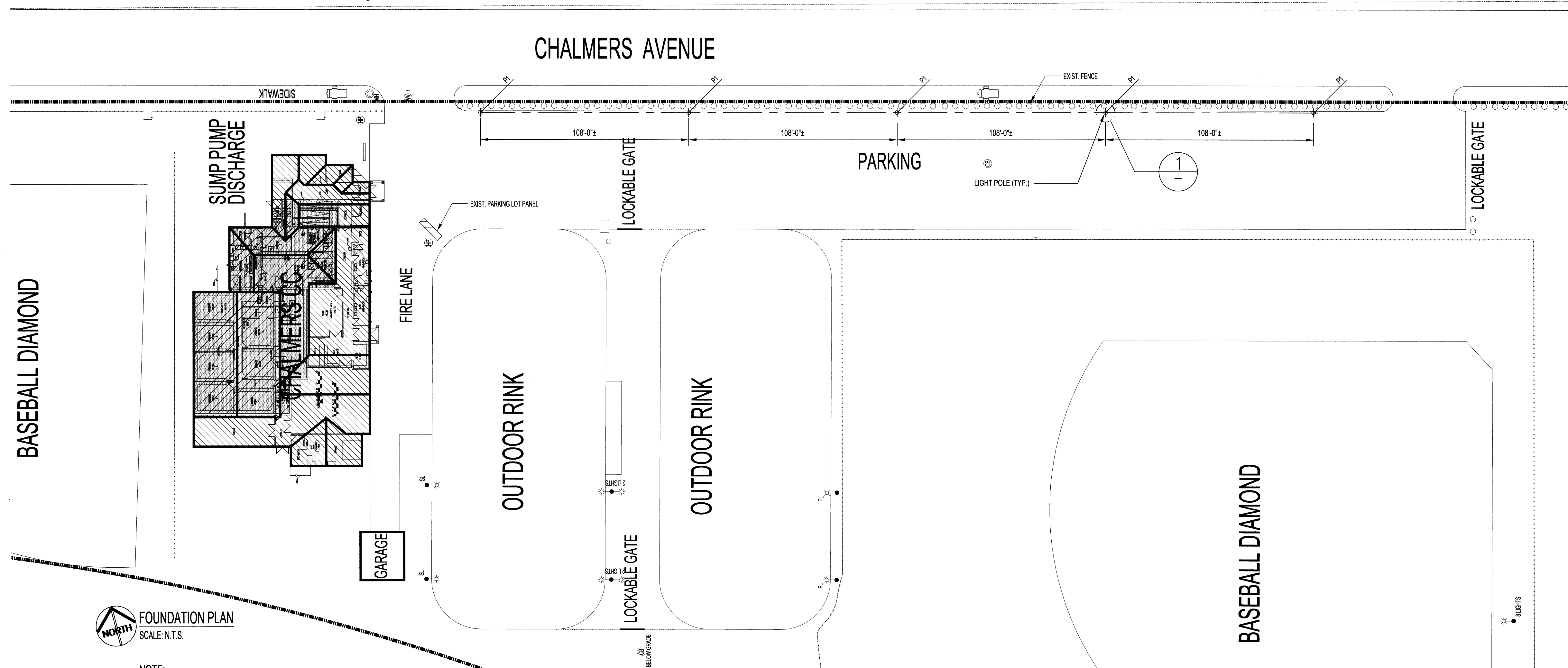
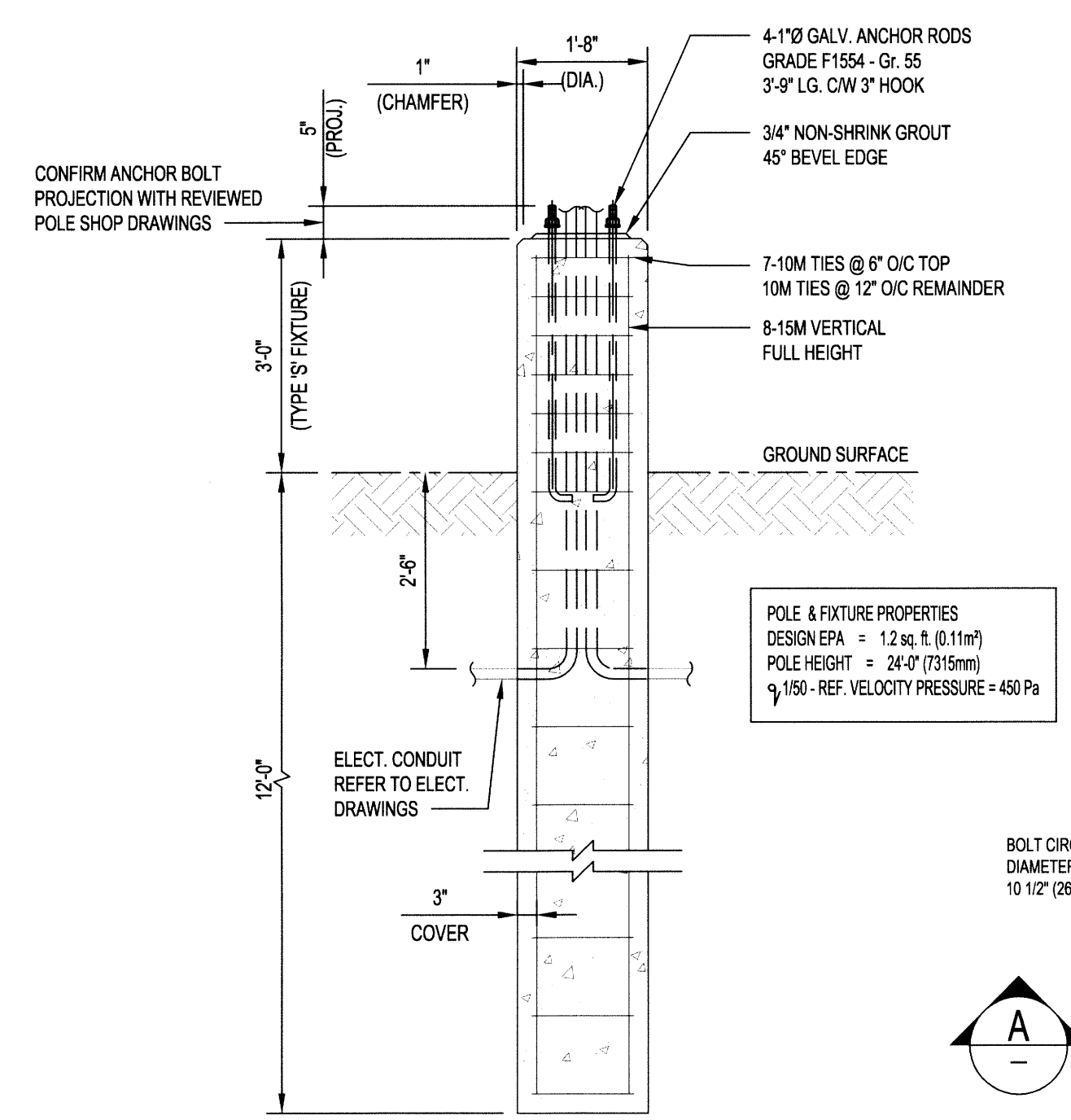


FILE NAME: 14-0107-033_S01.dwg DATE: 2014.11.10 PROJECT No: 201578 SHEET TITLE: STRUCTURAL - FOUNDATION PLAN ADDRESS: 480 CHALMERS AVENUE



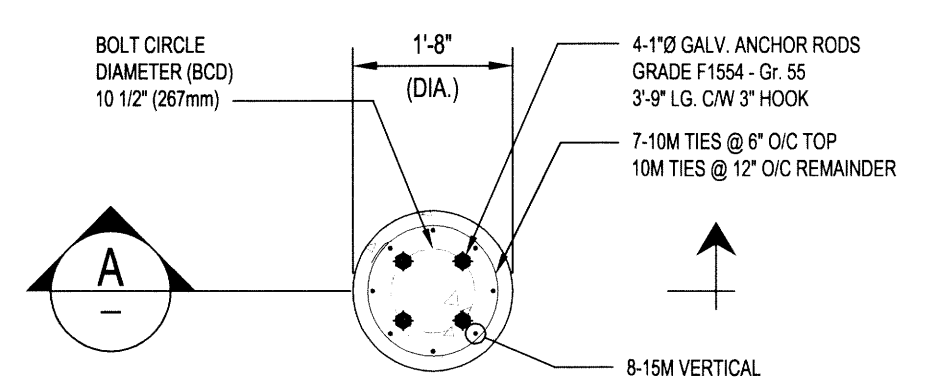
FOUNDATION PLAN
SCALE: N.T.S.

NOTE:
CONFIRM LOCATION OF LIGHT POLE FOUNDATIONS WITH CONTRACT ADMINISTRATION BEFORE PROCEEDING.



SECTION - PILE 'P1'
SCALE: 1/2"=1'-0"

NOTE:
CONFIRM POLE, BASE AND BOLT CIRCLE WITH REVIEWED LIGHT POLE SHOP DRAWINGS AND COORDINATE WITH CONCRETE WORK.



DETAIL - PILE 'P1'
SCALE: 1/2"=1'-0"

PILE SCHEDULE			
MARK	DIAMETER	PILE LENGTH (BELOW GRADE)	REMARKS
P1	1'-8"	12'-0"	REFER TO SECTION A & DETAIL 1

FOUNDATIONS (C.I.P. CONCRETE PILES):

- FOUNDATIONS SHALL BE CAST-IN-PLACE CONCRETE FRICTION PILES AS SHOWN ON DRAWINGS.
- CONCRETE PILES HAVE BEEN DESIGNED FOR AN AVERAGE ALLOWABLE SKIN FRICTION VALUE OF 14 kPa (SL) AND 18 kPa (UL) BASED ON THE FOLLOWING CONDITIONS:
 - NO FILL MATERIAL AT LOCATIONS OF LIGHT POLE FOUNDATIONS
 - NO SHALLOW WATER BEARING SILT LAYER WITHIN THE 12 FOOT BONDING ZONE
 ACTUAL SKIN FRICTION VALUES AND SOIL CONDITIONS TO BE TESTED ON SITE BY KGS GROUP DURING CONSTRUCTION.
- INSTALLATION OF ALL CONCRETE PILES SHALL BE INSPECTED AND APPROVED BY THE GEOTECHNICAL ENGINEER REGISTERED IN THE PROVINCE OF MANITOBA, PRIOR TO PLACEMENT OF CONCRETE.
- THE PILING CONTRACTOR SHALL BE RESPONSIBLE TO VERIFY THE EXISTENCE AND LOCATION OF ALL UNDERGROUND SERVICES IN PILING AREA WHETHER SHOWN OR NOT. EXPOSE ALL SERVICES CLOSE TO PILING AS REQUIRED.
- PILES SHALL NOT BE MORE THAN 50mm OUT OF POSITION LATERALLY AT THE TOP AND NOT MORE THAN 2% OUT OF PLUMB.
- REINFORCE ALL PILES AS DETAILED ON THE DRAWINGS. REFER TO CONCRETE NOTES FOR CONCRETE REQUIREMENTS. INSTALL EACH PILE AS A CONTINUOUS POUR.
- VIBRATE TOP 14'-9" (4.5m) OF CONCRETE IN ALL PILES.
- SLEEVING WHERE REQUIRED SHALL BE INCLUDED IN THE PILING CONTRACT.
- CONTRACTOR TO PROVIDE CONTRACT ADMINISTRATOR MINIMUM 48 HOURS NOTICE PRIOR TO DRILLING PILES TO PERMIT KGS GROUP TO CONDUCT SOIL TESTING.

REINFORCING STEEL:

- REINFORCING STEEL TO BE NEW DEFORMED BILLET STEEL BARS CONFORMING TO CSA G30.18 (LATEST), GRADE TO BE 400 MPa.
- REINFORCING STEEL SHALL BE CLEAN, FREE OF RUST, DIRT, LOOSE SCALE, OIL, GREASE OR ANY OTHER MATERIAL WHICH WOULD REDUCE BOND WITH THE CONCRETE.
- SUBMIT SHOP DRAWINGS WHICH CLEARLY INDICATE BAR SIZES, SPACINGS, LOCATIONS & QUANTITIES OF REINFORCING STEEL, BENDING & CUTTING SCHEDULES, SUPPORTING & SPACING DEVICES, ETC. FOR REVIEW PRIOR TO FABRICATION. DETAIL, FABRICATE AND PLACE REINFORCING IN ACCORDANCE WITH CSA A23.1 (LATEST), CSA A23.3 (LATEST) AND ACI SP-66 (LATEST) UNLESS NOTED. LAP STEEL 36 BAR DIAMETERS (MINIMUM) UNLESS NOTED.
- TIE, SUPPORT AND SPACE ALL REINFORCING STEEL WITH PROPER APPROVED DEVICES DESIGNED FOR USE IN REINFORCED CONCRETE, TO PREVENT DISPLACEMENT OF REINFORCING AND ENSURE SPECIFIED CONCRETE COVER.
- PROVIDE MINIMUM CONCRETE COVER FOR REINFORCING STEEL AS FOLLOWS:
C.I.P. PILES 75mm

CONCRETE:

- CONCRETE MATERIALS AND WORKMANSHIP SHALL BE IN ACCORDANCE WITH CSA A23.1 (LATEST). SEE BELOW FOR MIX REQUIREMENTS.
- ADMIXTURES SHALL NOT BE USED UNLESS SPECIFIED HEREIN OR APPROVED BY THE DESIGN ENGINEER. CALCIUM CHLORIDE SHALL NOT BE USED.
- MIX WATER SHALL BE POTABLE.
- DESIGN, FABRICATE AND ERECT FORMWORK/SHORING IN ACCORDANCE WITH CANCSA-289.3 (LATEST). ALLOW SUFFICIENT CONCRETE CURING TIME PRIOR TO REMOVAL.
- CONCRETE FINISHING SHALL MEET THE REQUIREMENTS OF CSA A23.1 (LATEST).
- FORM RELEASE AGENT SHALL BE BIODEGRADABLE, NON-STAINING AND NON-VOLATILE.
- PROVIDE ADEQUATE COLD/HOT WEATHER PROTECTION AS REQUIRED DURING CURING PERIOD.
- PLACE AND SECURE ALL EMBEDDED ANCHORS, WELD PLATES, SLEEVES, BLOCKS, DOMELS, INSERTS, WATERSTOPS, ETC. PRIOR TO PLACING CONCRETE. CO-ORDINATE WITH ALL TRADES FOR EMBEDDING OF ALL OTHER CONDUIT, SERVICES, BLOCKING, ETC.
- ALL EXPOSED CORNERS TO HAVE 25mm CHAMFER FILLET UNLESS NOTED.
- CAST-IN-PLACE ANCHOR BOLTS SHALL MEET REQUIREMENTS OF ASTM A307 (LATEST).
- EXPANSION ANCHORS SHALL BE HILTI KWIK-BOLTS OR APPROVED EQUAL, UNLESS NOTED. INSTALL AS PER MANUFACTURER'S INSTRUCTIONS.
- THE CONCRETE SUPPLIER SHALL BE CERTIFIED TO MEET THE REQUIREMENTS OF CSA A23.1.
- THE CONCRETE SUPPLIER SHALL SUBMIT CONCRETE MIX DATA SUBMISSION FORMS FOR EACH TYPE OF CONCRETE SPECIFIED FOR REVIEW PRIOR TO BATCHING ANY CONCRETE.

CONCRETE MIX DESIGNS:

CONCRETE MIX DESIGN SHALL BE PROPORTIONED TO MEET THE FOLLOWING PERFORMANCE REQUIREMENTS:

C.I.P. PILES, PILE CAPS, FOOTINGS & RAFT SLABS:	
EXPOSURE CLASS	S2
MIN. 28 DAY COMP. STRENGTH	35 MPa
CEMENT TYPE	HS
MAX. W/C RATIO	0.45
MAX. AGGREGATE SIZE	20mm
ENTRAINED AIR CONTENT	4%-7%

NOTES:
THESE DRAWINGS SHALL NOT BE SCALED.
THE CONTRACTOR SHALL VISIT THE SITE AND SATISFY ONESELF ALL DIMENSIONS, DATUM, AND DETAILED INFORMATION SHOWN ARE CORRECT.
ALL PRODUCTS AND MATERIALS TO BE USED AND INSTALLED SHALL CONFORM WITH MANUFACTURER'S SPECIFICATIONS & APPLICABLE CODES.

No.	REVISION/DESCRIPTION	BY	DATE
0	ISSUED FOR CONSTRUCTION	FB	15.03.19

SEAL

DATE: 2014.11.10

DRAWN: FBV, CHECKED: FB, DESIGNED: RC, APPROVED: FB

THE CITY OF WINNIPEG
PLANNING, PROPERTY AND
DEVELOPMENT DEPARTMENT
MUNICIPAL ACCOMMODATIONS DIVISION
3-65 GARRY STREET, R3C 4K4

PROJECT
**CHALMERS COMMUNITY CENTRE
PARKING LOT LIGHTING UPGRADE**

480 CHALMERS AVENUE
SHEET TITLE

**STRUCTURAL
FOUNDATION PLAN**

SCALE	PROJECT No:	SHEET No:
AS SHOWN	2015-78	S1

