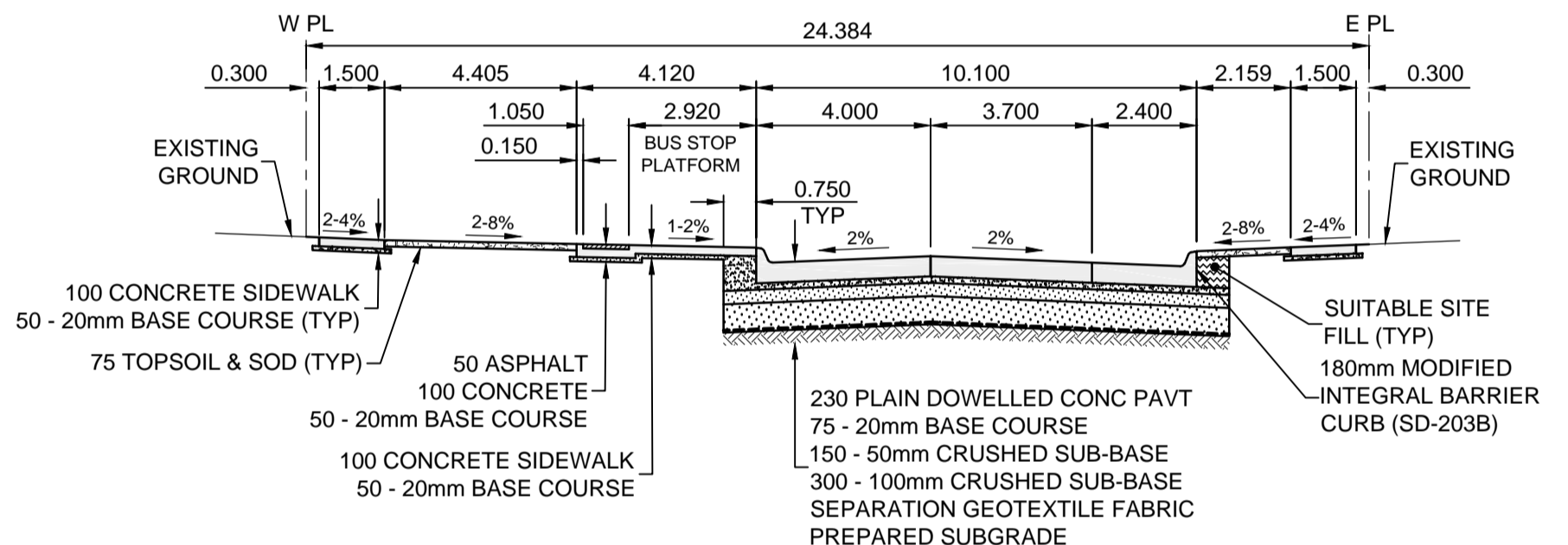
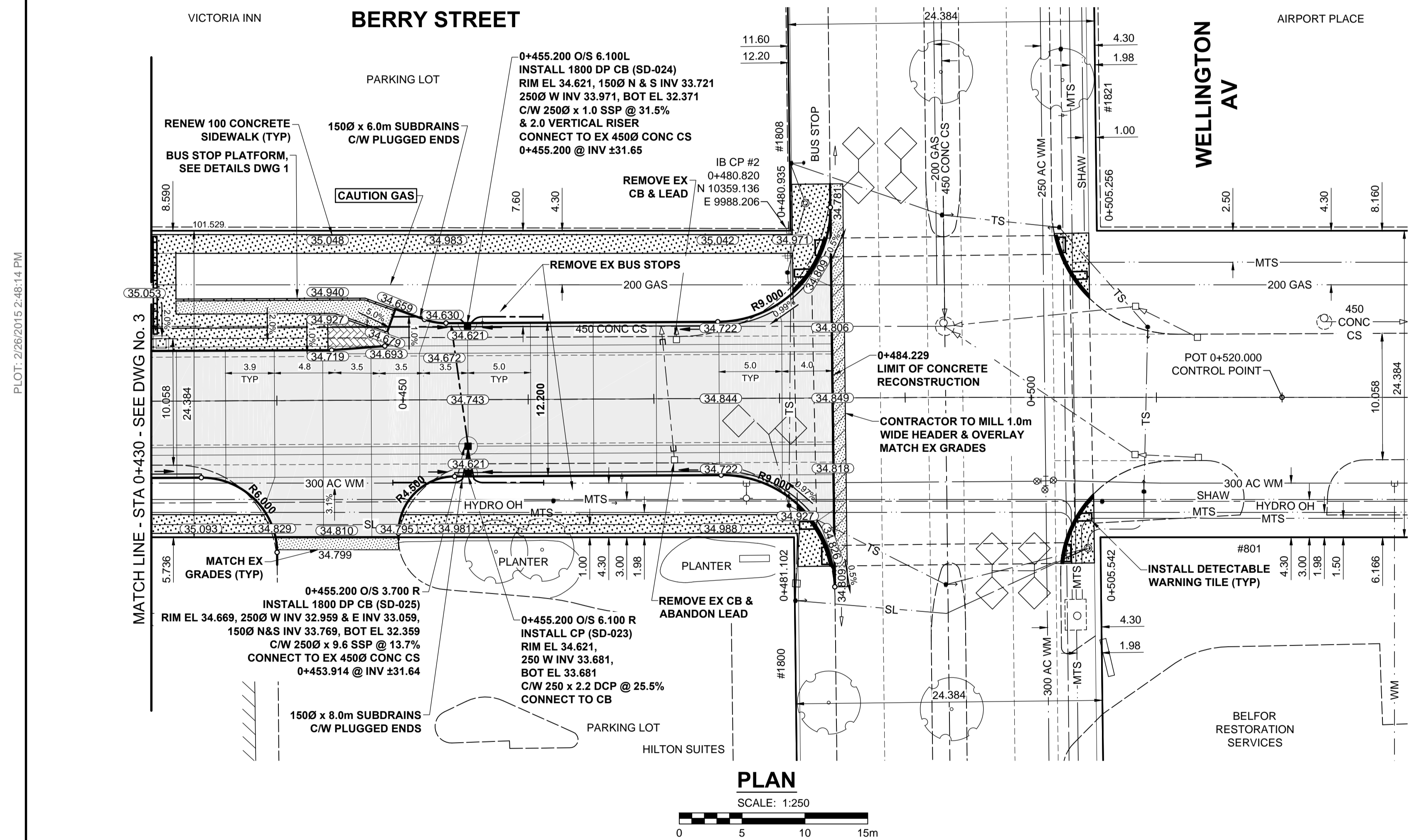
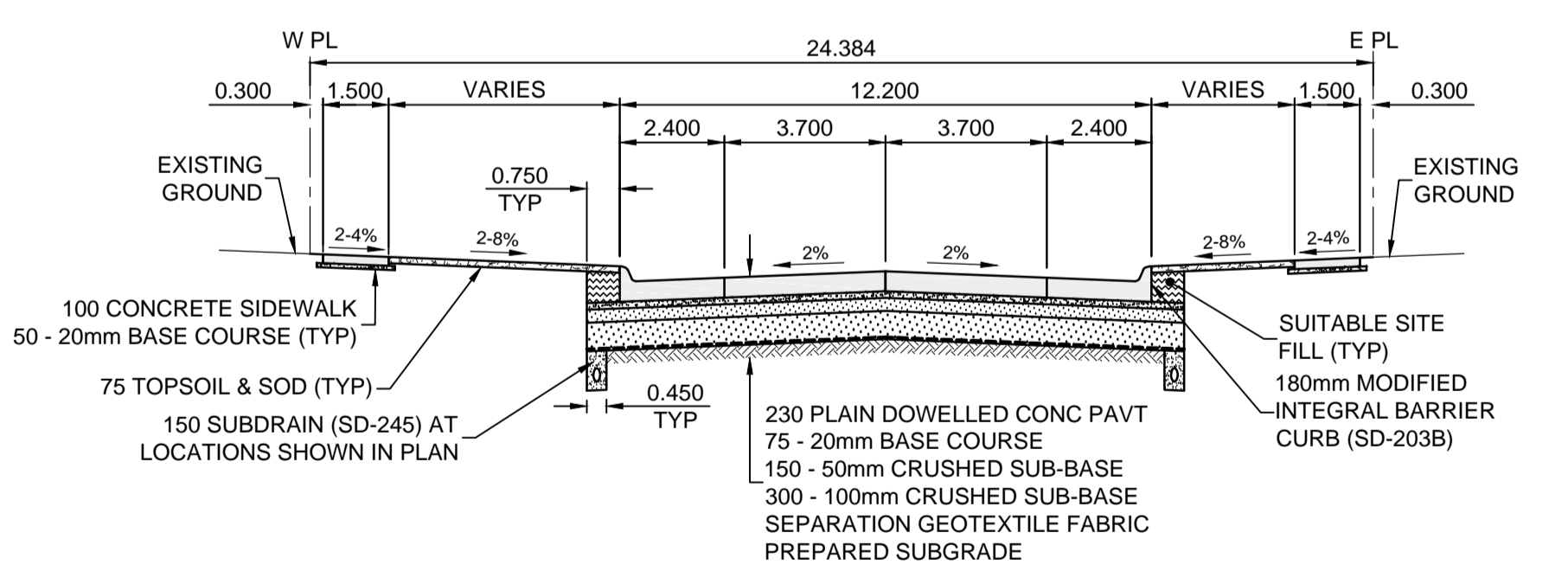


- NOTES**
- ADJUST MH AND CB RIMS TO NEW GRADES.
 - LAMP STANDARDS, HYDRO POLES, AND ANCHORS THAT REQUIRE TEMPORARY SUPPORT, REMOVAL OR REPLACEMENT, TO BE DONE SO AT THE EXPENSE OF THE CONTRACTOR AS NECESSARY.
 - CONTRACTOR TO REGRADE/RENEW EXISTING PRIVATE SIDEWALKS TO LIMITS AS SHOWN. SIDEWALKS TO BE RENEWED WITH CONCRETE UNLESS NOTED OTHERWISE.
 - CONTRACTOR TO TAKE PRECAUTIONARY STEPS TO PROTECT EXISTING TREES WITHIN THE LIMITS OF CONSTRUCTION FROM DAMAGE FROM CONSTRUCTION ACTIVITIES AS OUTLINED IN THE SPECIFICATIONS.
 - CONTRACTOR TO CONFIRM THE LOCATION OF ALL UTILITIES/SERVICES IN THE FIELD PRIOR TO CONSTRUCTION.
 - IN GENERAL, PAVEMENT AND SIDEWALK AREAS TO BE REMOVED, MATCH RECONSTRUCTION LIMITS.
 - CB SD-024 OFFSETS ARE DIMENSIONED TO BOC. CB SD-025 OFFSETS ARE DIMENSIONED O/C.
 - REFER TO SPECIFICATIONS FOR STAGING REQUIREMENTS.
 - MODIFIED BARRIER CURB & GUTTER INLET FRAME & COVER TF-122.
 - ADD 200.000m TO ABBREVIATED ELEVATIONS TO OBTAIN GEODETIC ELEVATIONS.

| CONTROL LINE - COORDINATES | | |
|----------------------------|------------|------------|
| NAME | NORTHING | EASTING |
| POT 0+080.000 | 9958.1271 | 9988.4642 |
| PI 0+273.630 | 10151.6377 | 9995.2622 |
| POT 0+520.000 | 10397.8907 | 10002.8458 |



TYPICAL PAVEMENT SECTION AT BUS STOP LOCATION
CONCRETE PAVEMENT STRUCTURE
SCALE: NTS



TYPICAL PAVEMENT SECTION
CONCRETE PAVEMENT STRUCTURE
SCALE: NTS

METRIC
WHOLE NUMBERS INDICATE MILLIMETRES
DECIMALIZED NUMBERS INDICATE METRES

| EXISTING | LEGEND - PLAN | NEW | EXISTING | LEGEND - PLAN | NEW | EXISTING | LEGEND - PLAN | NEW |
|----------|--------------------------|-----|-------------------------|---------------|-------------------|----------|------------------------|-----|
| ○ | GAS | ○ | MANHOLE | ● | CONCRETE PAVEMENT | □ | CONC SIDEWALK / MEDIAN | ■ |
| □ | MTS | □ | CATCH BASIN / CATCH PIT | ■ | ASPHALT PAVEMENT | △ | PAVING STONE | ▲ |
| △ | HYDRO | △ | CURB INLET WITH BOX | ▲ | GRAVEL | ▨ | RAMP CURB | ▩ |
| ○ | CATV / FIBRE OPTIC | ○ | TREE | ▨ | PLANING / REMOVAL | ▩ | | |
| ○ | TRAFFIC SIGNALS / PIT | ○ | TEST HOLE | | | | | |
| ○ | LAND DRAINAGE SEWER | ○ | PROPERTY LINE | | | | | |
| ○ | SANITARY/COMBINED SEWER | ○ | SURVEY BAR | | | | | |
| ○ | SEWER SERV/DRAINAGE CONN | ○ | FENCE | | | | | |
| ○ | WATERMAIN | ○ | BOC / EDGE OF PAVEMENT | | | | | |
| ○ | SUBDRAIN | ○ | ELEVATION | | | | | |
| ○ | DITCH | ○ | TRAFFIC SIGN | | | | | |

LOCATION APPROVED
UNDERGROUND STRUCTURES

GBM 38-001 Tblt. in N. Conc. foundation of The International Inn.
ELEV 236.061 Wellington Ave. & Berry St., 0.6m W. of N.E. Cor. of Bldg.

DATE: 15/02/02

MORRISON HERSHFELD

DESIGNED BY: GFC
CHECKED BY: RPB, WRJ
DRAWN BY: DML
APPROVED BY: BWB

HOR. SCALE: 1:250
VERT. SCALE: 1:10
DATE: 15/02/02

PROFESSIONAL'S SEAL
R.P. BRUCE
REGISTERED PROFESSIONAL ENGINEER

THE CITY OF WINNIPEG
PUBLIC WORKS DEPARTMENT
ENGINEERING DIVISION

2015 LOCAL STREET & ALLEY RENEWAL PROGRAM
BERRY STREET
CONCRETE RECONSTRUCTION
HORIZONTAL AND VERTICAL ALIGNMENT
STA 0+430 TO STA 0+530

CITY DRAWING NUMBER: N/A
SHEET 4 OF 14
DRAWING No. 4
REV B

APEGM
Certificate of Authorization
MORRISON HERSHFELD
No. 1736
BID OPPORTUNITY No. 8-2015