

APPENDIX 'A'

PAVEMENT CORE REPORT

APPENDIX 'A' - PAVEMENT CORE REPORT

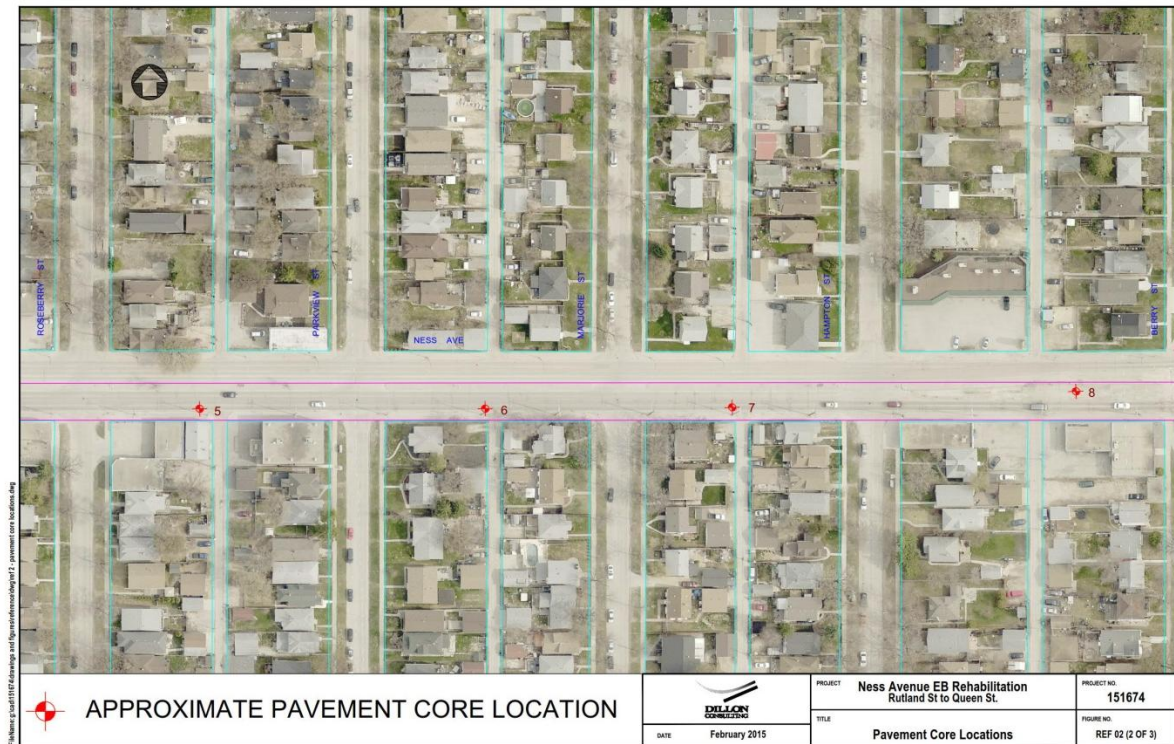
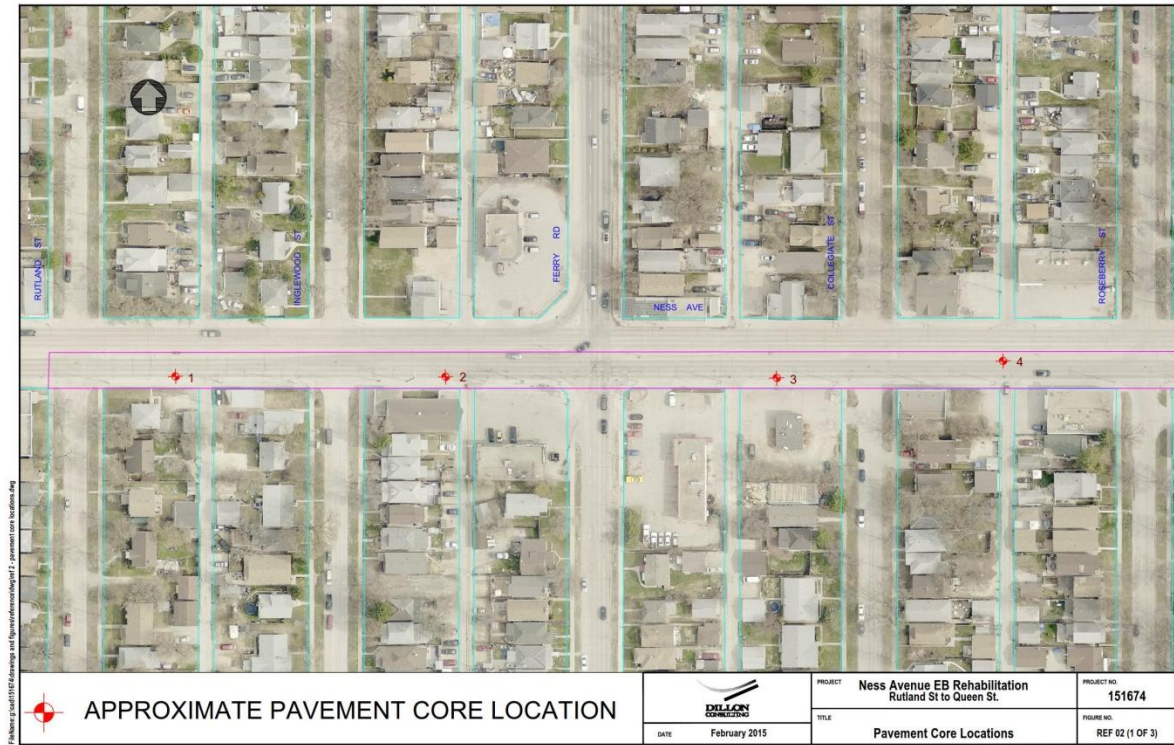
TABLE OF CONTENTS

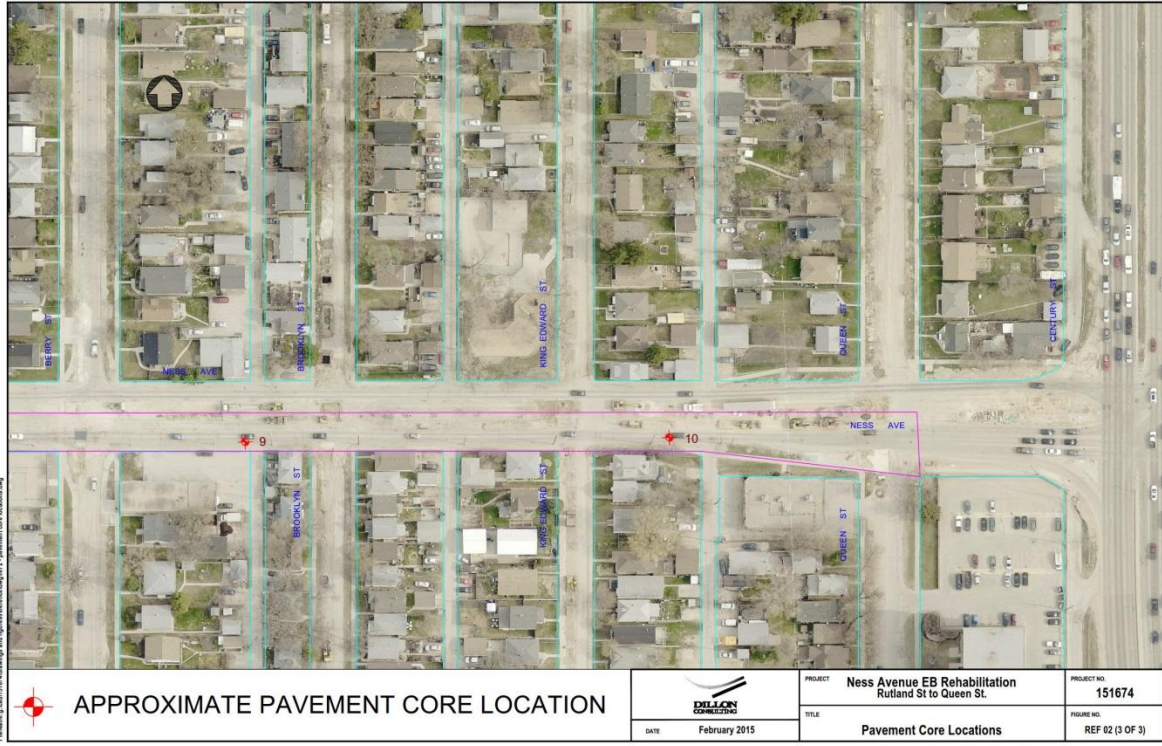
PAVEMENT CORE REPORT FOR NESS AVENUE EB, RUTLAND STREET TO QUEEN STREET	1
Test Hole Locations	1
Summary of Core Samples	3
Pavement Core Photos	4
PAVEMENT CORE REPORT FOR NESS AVENUE EB OVERDALE STREET TO RUTLAND STREET	7
Test Hole Locations	7
Summary of Core Samples	9
Pavement Core Photos	10

The geotechnical report is provided to aid in the Contractor's evaluation of the existing pavement structure and/or soil conditions. The information presented is considered accurate at the locations shown on the Drawings and at the time of drilling. However, variations in pavement structure and/or soil conditions may exist between test holes and fluctuations in groundwater levels can be expected seasonally and may occur as a result of construction activities. The nature and extent of variations may not become evident until construction commences.

Pavement Core Report for Ness Avenue EB, Rutland Street to Queen Street

Test Hole Locations





APPROXIMATE PAVEMENT CORE LOCATION

	PROJECT	Ness Avenue EB Rehabilitation Rutland St to Queen St.	PROJECT NO.	151674
	TITLE	Pavement Core Locations		
DATE	February 2015		FIGURE NO.	REF 02 (3 OF 3)

Path: \\c:\p\151674\maps\151674\pavement_core_location.mxd

Summary of Core Samples



**TABLE 1
 PAVEMENT CORE SUMMARY
 EASTBOUND NESS AVENUE, RUTLAND STREET TO QUEEN STREET**

Core No.	Core Location	Pavement Structure Thickness (mm)			Comments
		Asphalt	Concrete	Total	
1	Ness Avenue, eastbound curb lane, 1 m from curb, 25 m east from Rutland Street	45	150	195	<ul style="list-style-type: none"> Asphalt pavement not bonded to concrete surface Moderate deterioration of concrete pavement at bond line with asphalt pavement; sound concrete below 70 mm from top of pavement Granular base below pavement
2	Ness Avenue, eastbound curb lane, 1 m from curb, 30 m east from Inglewood Street	50	185	235	<ul style="list-style-type: none"> Asphalt pavement not bonded to concrete surface Sound concrete below asphalt pavement Granular base below pavement
3	Ness Avenue, eastbound curb lane, 1 m from curb, 25 m west from Collegiate Street	55	190	245	<ul style="list-style-type: none"> Asphalt pavement not bonded to concrete surface Sound concrete below asphalt pavement Granular base below pavement
4	Ness Avenue, eastbound median lane, 0.5 m from curb, 42 m east from Collegiate Street	75	205	280	<ul style="list-style-type: none"> Asphalt pavement not bonded to concrete surface Sound concrete below asphalt pavement Granular base below pavement
5	Ness Avenue, eastbound curb lane, 1 m from curb, 35 m east from Roseberry Street	55	205	260	<ul style="list-style-type: none"> Asphalt pavement not bonded to concrete surface Sound concrete below asphalt pavement Granular base below pavement
6	Ness Avenue, eastbound curb lane, 1 m from curb, 30 m east from Parkview Street	60	200	260	<ul style="list-style-type: none"> Asphalt pavement not bonded to concrete surface Sound concrete below asphalt pavement Granular base below pavement



Core No.	Core Location	Pavement Structure Thickness (mm)			Comments
		Asphalt	Concrete	Total	
7	Ness Avenue, eastbound curb lane, 1 m from curb, 30 m east from Marjorie Street	45	205	250	<ul style="list-style-type: none"> Asphalt pavement not bonded to concrete surface Sound concrete below asphalt pavement Granular base below pavement
8	Ness Avenue, eastbound median lane, 0.5 m from curb, 32 m west from Berry Street	45	190	235	<ul style="list-style-type: none"> Asphalt pavement not bonded to concrete surface Sound concrete below asphalt pavement Granular base below pavement
9	Ness Avenue, eastbound curb lane, 1 m from curb, 30 m west from Brooklyn Street	40	185	225	<ul style="list-style-type: none"> Asphalt pavement not bonded to concrete surface Sound concrete below asphalt pavement Granular base below pavement
10	Ness Avenue, eastbound curb lane, 1 m from curb, 25 m east from King Edward Street	30	195	225	<ul style="list-style-type: none"> Asphalt pavement not bonded to concrete surface Slight deterioration of concrete pavement at bond line with asphalt pavement; sound concrete below 50 mm from top of pavement Granular base below pavement

Pavement Core Photos



Core no. 1



Core no. 2



Core no. 3



Core no. 4



Core no. 5



Core no. 6



Core no. 7



Core no. 8



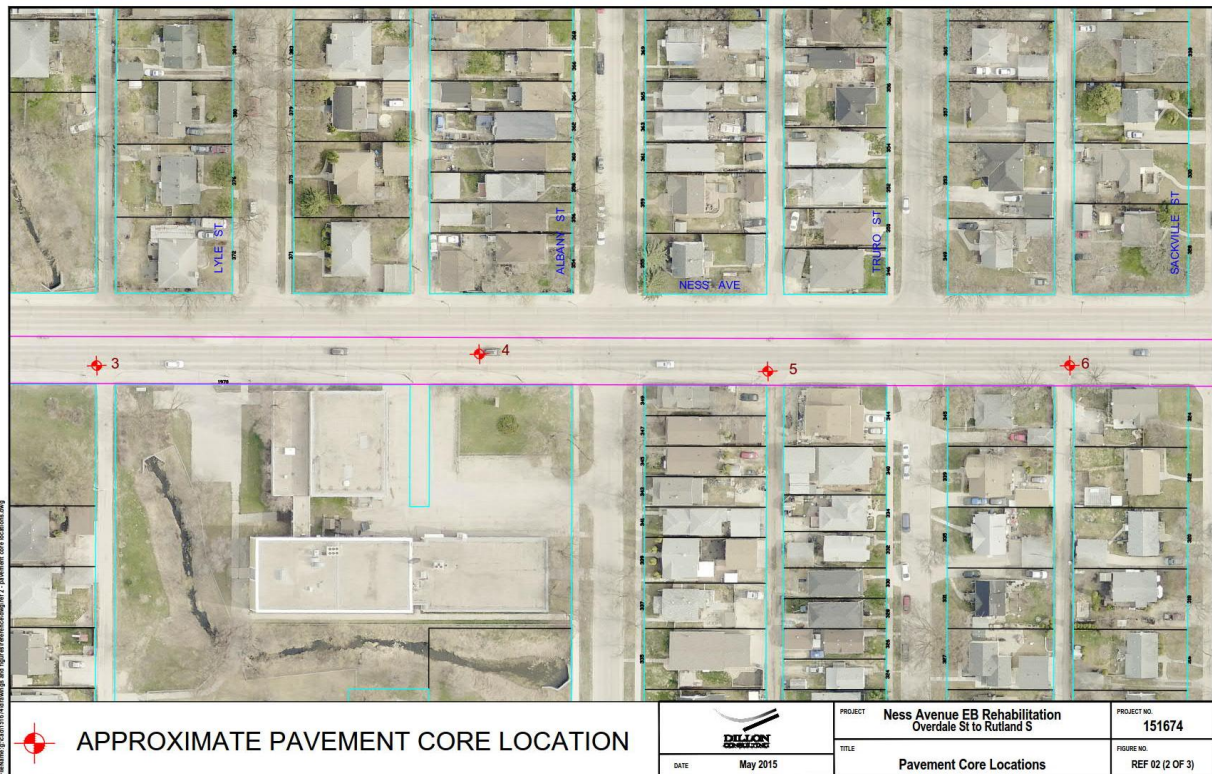
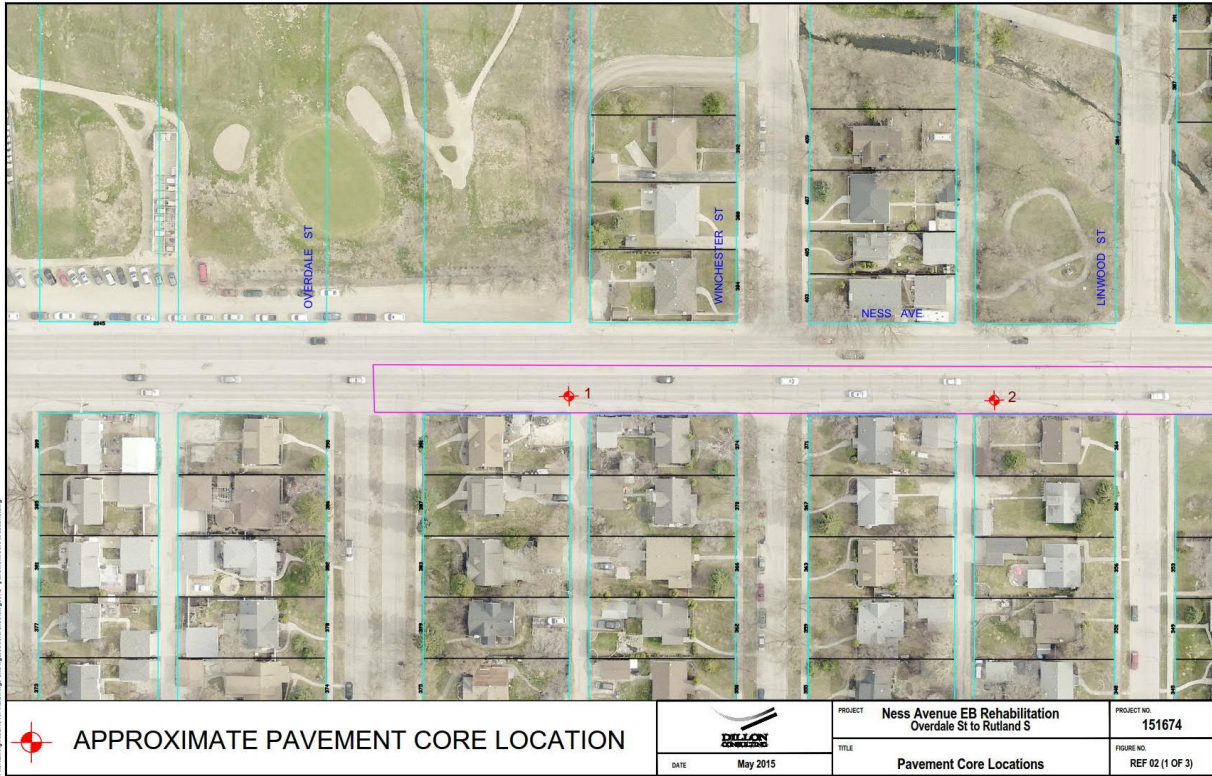
Core no. 9

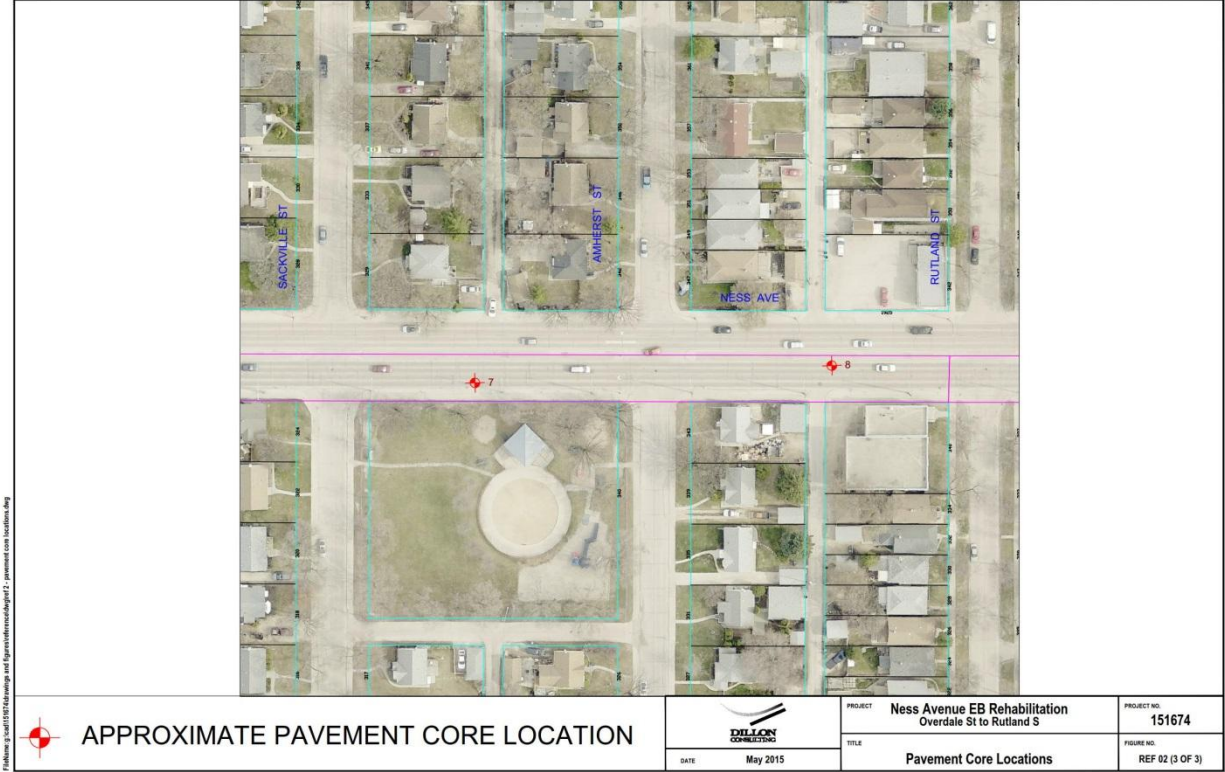


Core no. 10


Pavement Core Report for Ness Avenue EB Overdale Street to Rutland Street

Test Hole Locations





 APPROXIMATE PAVEMENT CORE LOCATION

 <small>DATE</small> May 2015	<small>PROJECT</small> Ness Avenue EB Rehabilitation Overdale St to Rutland S	<small>PROJECT NO.</small> 151674
	<small>TITLE</small> Pavement Core Locations	<small>FIGURE NO.</small> REF 02 (3 OF 3)

File Name: C:\Users\jgibson\Documents\807-2015\807-2015_Pavement Core Locations.dwg

Summary of Core Samples



**TABLE 1
 PAVEMENT CORE SUMMARY
 EASTBOUND NESS AVENUE, OVERDALE STREET TO RUTLAND STREET**

Core No.	Core Location	Pavement Structure Thickness (mm)			Comments
		Asphalt	Concrete	Total	
1	Ness Avenue, centreline of eastbound curb lane, 13 m west from alley between Overdale Street and Winchester Street	40	200	240	<ul style="list-style-type: none"> Asphalt pavement not bonded to concrete surface Sound concrete below asphalt pavement Limestone base below pavement
2	Ness Avenue, centreline of eastbound curb lane, 13 m west from alley between Winchester Street and Linwood Street	30	200	230	<ul style="list-style-type: none"> Asphalt pavement not bonded to concrete surface Sound concrete below asphalt pavement Limestone base below pavement
3	Ness Avenue, centreline of eastbound curb lane, 55 m west from Lyle Street	100	185	285	<ul style="list-style-type: none"> Asphalt pavement not bonded to concrete surface Sound concrete below asphalt pavement Limestone base below pavement
4	Ness Avenue, eastbound median lane, 0.5 m from curb, 31 m west from Albany Street	40	200	240	<ul style="list-style-type: none"> Asphalt pavement not bonded to concrete surface Minor deterioration of concrete pavement at bond line with asphalt pavement; sound concrete below 50 mm from top of pavement Limestone base below pavement
5	Ness Avenue, centreline of eastbound curb lane, 12 m west from alley between Albany Street and Truro Street	70	200	270	<ul style="list-style-type: none"> Asphalt pavement not bonded to concrete surface Sound concrete below asphalt pavement Limestone base below pavement
6	Ness Avenue, centreline of eastbound curb lane, 6 m east from alley between Truro Street and Sackville Street	60	205	265	<ul style="list-style-type: none"> Asphalt pavement not bonded to concrete surface Sound concrete below asphalt pavement Limestone base below pavement



Core No.	Core Location	Pavement Structure Thickness (mm)			Comments
		Asphalt	Concrete	Total	
7	Ness Avenue, centreline of eastbound curb lane, 33 m east from Sackville Street	50	200	250	<ul style="list-style-type: none"> Asphalt pavement not bonded to concrete surface Moderate deterioration of concrete pavement at bond line with asphalt pavement; sound concrete below 70 mm from top of pavement Limestone base below pavement
8	Ness Avenue, eastbound median lane, 0.5 m from curb, 10 m west from alley between Amherst Street and Rutland Street	55	235	290	<ul style="list-style-type: none"> Asphalt pavement not bonded to concrete surface Sound concrete below asphalt pavement Limestone base below pavement

Pavement Core Photos



Core no. 1



Core no. 2



Core no. 3



Core no. 4



Core no. 5



Core no. 6



Core no. 7



Core no. 8