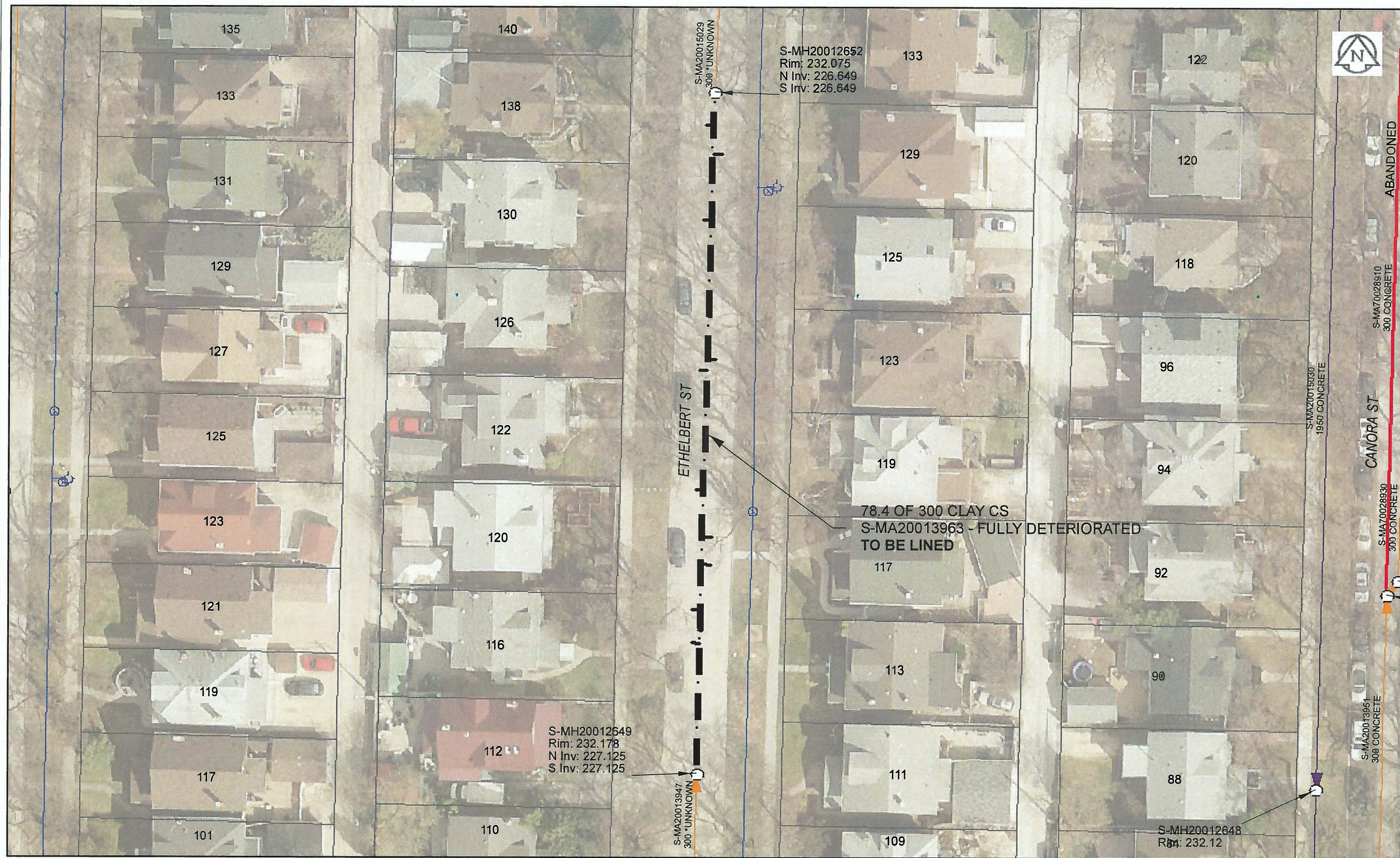


B SIZE 11" X 17" (279mm x 432mm)



**Sewer Junction Information**

(From Video Inspection)

| Reference MH | Distance | Size | Clock |
|--------------|----------|------|-------|
| S-MH20012649 | 015.5    | 150  | 10    |
| -            | 019.4    | 150  | 10    |
| -            | 024.8    | 150  | 02    |
| -            | 028.0    | 150  | 01    |
| -            | 033.6    | 150  | 11    |
| -            | 047.7    | 150  | 11    |
| -            | 049.0    | 150  | 01    |
| -            | 065.5    | 150  | 10    |
| -            | 073.2    | 150  | 02    |
| -            | 076.7    | 150  | 10    |

**WARNING**  
 IF POWER EQUIPMENT OR EXPLOSIVES ARE TO BE USED FOR EXCAVATION ON THIS PROJECT, THE CONTRACTOR MUST:  
 1) NOTIFY THE GAS COMPANY OF THE PROPOSED LOCATION OF EXCAVATION.  
 2) TAKE PRECAUTION TO AVOID DAMAGE TO GAS COMPANY INSTALLATIONS.  
 SEE PROVINCIAL REGULATION 140/92 FOR DETAILS

**APEGM**  
 Certificate of Authorization  
 AECOM Canada Ltd.  
 No. 4671 Date: *Dec 8, 2015*

**METRIC**  
 WHOLE NUMBERS INDICATE MILLIMETRES  
 DECIMALIZED NUMBERS INDICATE METRES  
 0 2.5 5 10 15 20  
 Meters

BID OPPORTUNITY NO. 821-2015

AECOM REVIEW DRFT CHK

FILE NAME: 2015 Lining.pdf SAVED BY: JD

**LOCATION APPROVED UNDERGROUND STRUCTURES**

SUPR. U/G STRUCTURES DATE COMMITTEE

**NOTE:**  
 LOCATION OF UNDERGROUND STRUCTURES AS SHOWN ARE BASED ON THE BEST INFORMATION AVAILABLE. BUT NO GUARANTEE IS GIVEN THAT ALL EXISTING UTILITIES ARE SHOWN OR THAT THE GIVEN LOCATIONS ARE EXACT. CONFIRMATION OF EXISTENCE AND EXACT LOCATION OF ALL SERVICES MUST BE OBTAINED FROM THE INDIVIDUAL UTILITIES BEFORE PROCEEDING WITH CONSTRUCTION.

| Can-Net GPS Reference Station WINN/810 |                   |          |    |
|--|-------------------|----------|----|
| NO.                                    | REVISIONS         | YY/MM/DD | BY |
| 0                                      | ISSUED FOR TENDER | 15/12/08 | JD |

**AECOM**

|             |       |                           |            |
|-------------|-------|---------------------------|------------|
| DESIGNED BY | CM    | CHECKED BY                | <i>ADB</i> |
| DRAWN BY    | JD    | APPROVED BY               | <i>JD</i>  |
| HOR. SCALE  | 1:500 | RELEASED FOR CONSTRUCTION |            |
| VERT. SCALE | N/A   | DATE                      |            |

PROFESSIONAL'S SEAL

PROVINCE OF MANITOBA  
*ADB*  
 BRAUN  
 Member  
 24453  
 REGISTERED ENGINEER

CONSULTANT DRAWING NO.  
 60438708-01-C-2015 Lining-R0X.mxd

**THE CITY OF WINNIPEG**  
 WATER AND WASTE DEPARTMENT

2015 SEWER RENEWALS  
 BY CIPP LINING  
 CONTRACT 3  
 ETHELBERT ST  
 2ND MH S OF WESTMINSTER AV TO 1ST MH S OF WESTMINSTER AV

SHEET 29 OF 45  
 CITY DRAWING NUMBER  
**11101** REV 0