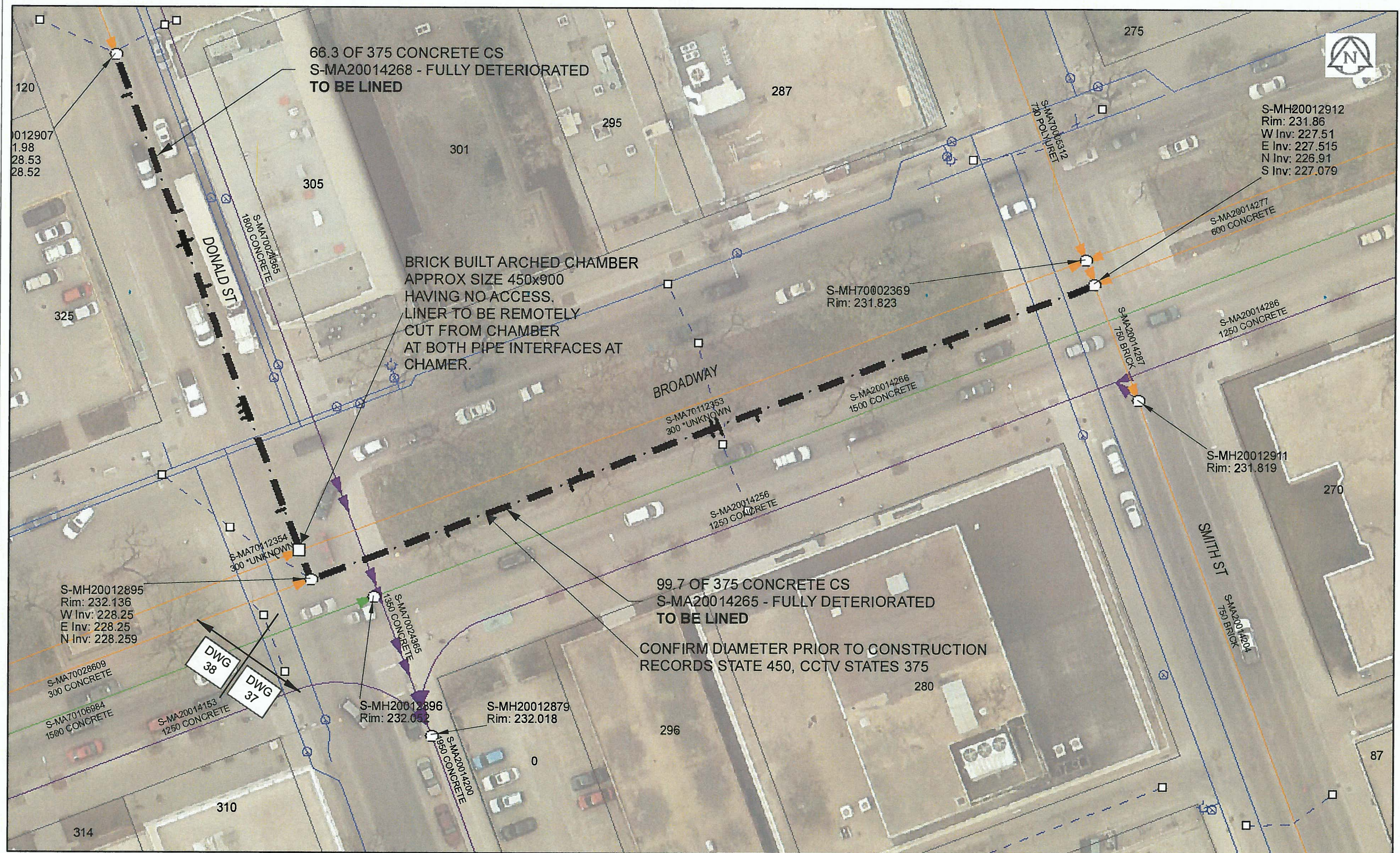


B SIZE 11" X 17" (279mm x 432mm)



Sewer Junction Information
(From Video Inspection)

Reference MH	Distance	Size	Clock
S-MH20012895	017.2	150	01
-	032.9	150	02
-	034.6	150	10
-	050.9	150	02
-	051.2	100	11
-	051.9	100	01
-	051.9	150	10
-	056.6	100	01
-	081.1	100	01

WARNING
IF POWER EQUIPMENT OR EXPLOSIVES ARE TO BE USED FOR EXCAVATION ON THIS PROJECT, THE CONTRACTOR MUST:
1) NOTIFY THE GAS COMPANY OF THE PROPOSED LOCATION OF EXCAVATION.
2) TAKE PRECAUTION TO AVOID DAMAGE TO GAS COMPANY INSTALLATIONS.
SEE PROVINCIAL REGULATION 140/92 FOR DETAILS

APEGM
Certificate of Authorization
AECOM Canada Ltd.
No. 4671 Date: Dec 8, 2015

METRIC
WHOLE NUMBERS INDICATE MILLIMETRES
DECIMALIZED NUMBERS INDICATE METRES
0 2.5 5 10 15 20
Meters

BID OPPORTUNITY NO. 821-2015

AECOM REVIEW DRFT CHK

LOCATION APPROVED UNDERGROUND STRUCTURES
Can-Net GPS Reference Station WINN/810
SUPR. U/G STRUCTURES COMMITTEE DATE
NOTE:
LOCATION OF UNDERGROUND STRUCTURES AS SHOWN ARE BASED ON THE BEST INFORMATION AVAILABLE. BUT NO GUARANTEE IS GIVEN THAT ALL EXISTING UTILITIES ARE SHOWN OR THAT THE GIVEN LOCATIONS ARE EXACT. CONFIRMATION OF EXISTENCE AND EXACT LOCATION OF ALL SERVICES MUST BE OBTAINED FROM THE INDIVIDUAL UTILITIES BEFORE PROCEEDING WITH CONSTRUCTION.

NO.	ISSUED FOR TENDER	15/12/08	JD
NO.	REVISIONS	YY/MM/DD	BY
0	ISSUED FOR TENDER	15/12/08	JD

AECOM

DESIGNED BY	CM	CHECKED BY	ADB
DRAWN BY	JD	APPROVED BY	[Signature]
HOR. SCALE	1: 500	RELEASED FOR CONSTRUCTION	[Signature]
VERT. SCALE	N/A	DATE	Dec 9/15

PROFESSIONAL'S SEAL
PROVINCE OF MANITOBA
AAB BRAUN
Member
24453
REGISTERED ENGINEER
CONSULTANT DRAWING NO.
60438708-01-C-2015 Lining-R0X.mxd

THE CITY OF WINNIPEG WATER AND WASTE DEPARTMENT

2015 SEWER RENEWALS BY CIPP LINING CONTRACT 3 BROADWAY (CL) MH AT DONALD ST (CL) TO MH AT SMITH ST

SHEET	36 OF 45
CITY DRAWING NUMBER	11108 REV 0