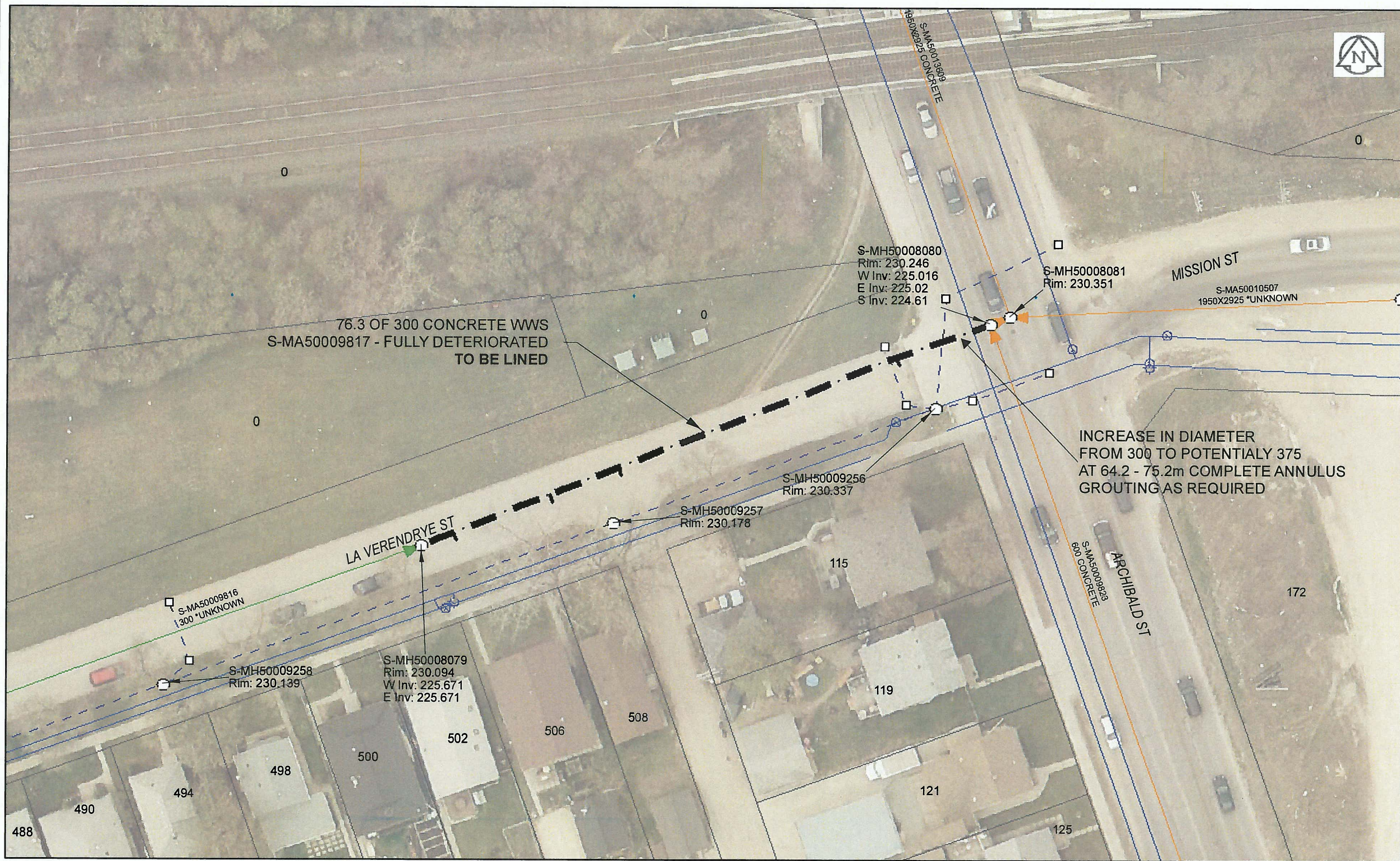


B SIZE 11" X 17" (279mm x 432mm)



**Sewer Junction Information**  
(From Video Inspection)

Reference MH	Distance	Size	Clock
S-MH50008079	004.1	150	02
-	016.3	150	02
-	025.0	150	02
-	060.4	150	02

**WARNING**  
IF POWER EQUIPMENT OR EXPLOSIVES ARE TO BE USED FOR EXCAVATION ON THIS PROJECT, THE CONTRACTOR MUST:  
1) NOTIFY THE GAS COMPANY OF THE PROPOSED LOCATION OF EXCAVATION.  
2) TAKE PRECAUTION TO AVOID DAMAGE TO GAS COMPANY INSTALLATIONS.  
SEE PROVINCIAL REGULATION 140/92 FOR DETAILS

**APEGM**  
Certificate of Authorization  
AECOM Canada Ltd.  
No. 4671 Date: *Dec 8, 2015*

**METRIC**  
WHOLE NUMBERS INDICATE MILLIMETRES  
DECIMALIZED NUMBERS INDICATE METRES  
0 2.5 5 10 15 20  
Meters

BID OPPORTUNITY NO. 821-2015

AECOM REVIEW DRFT CHK  
FILE NAME: 2015 Lining.pdf SAVED BY: JD

**LOCATION APPROVED**  
UNDERGROUND STRUCTURES

SUPR. U/G STRUCTURES COMMITTEE	DATE

NOTE:  
LOCATION OF UNDERGROUND STRUCTURES AS SHOWN ARE BASED ON THE BEST INFORMATION AVAILABLE. BUT NO GUARANTEE IS GIVEN THAT ALL EXISTING UTILITIES ARE SHOWN OR THAT THE GIVEN LOCATIONS ARE EXACT. CONFIRMATION OF EXISTENCE AND EXACT LOCATION OF ALL SERVICES MUST BE OBTAINED FROM THE INDIVIDUAL UTILITIES BEFORE PROCEEDING WITH CONSTRUCTION.

NO.	REVISIONS	YY/MM/DD	BY
0	ISSUED FOR TENDER	15/12/08	JD

Can-Net GPS Reference Station WINN/810

NO.	REVISIONS	YY/MM/DD	BY



DESIGNED BY	CM	CHECKED BY	ADB
DRAWN BY	JD	APPROVED BY	<i>[Signature]</i>
HOR. SCALE	1: 500	RELEASED FOR CONSTRUCTION	<i>[Signature]</i>
VERT. SCALE	N/A	DATE	<i>Dec 9/15</i>

PROFESSIONAL'S SEAL  
PROVINCE OF MANITOBA  
*[Signature]*  
BRAUN  
Member  
24453  
REGISTERED ENGINEER  
CONSULTANT DRAWING NO.  
60438708-01-C-2015 Lining-R0X.mxd

**THE CITY OF WINNIPEG**  
WATER AND WASTE DEPARTMENT

**2015 SEWER RENEWALS**  
**BY CIPP LINING**  
**CONTRACT 3**  
**LA VERENDRYE ST**  
1ST MH E OF LAFLECHE ST TO MH AT ARCHIBALD ST

SHEET 43 OF 45  
CITY DRAWING NUMBER  
**11115** REV 0