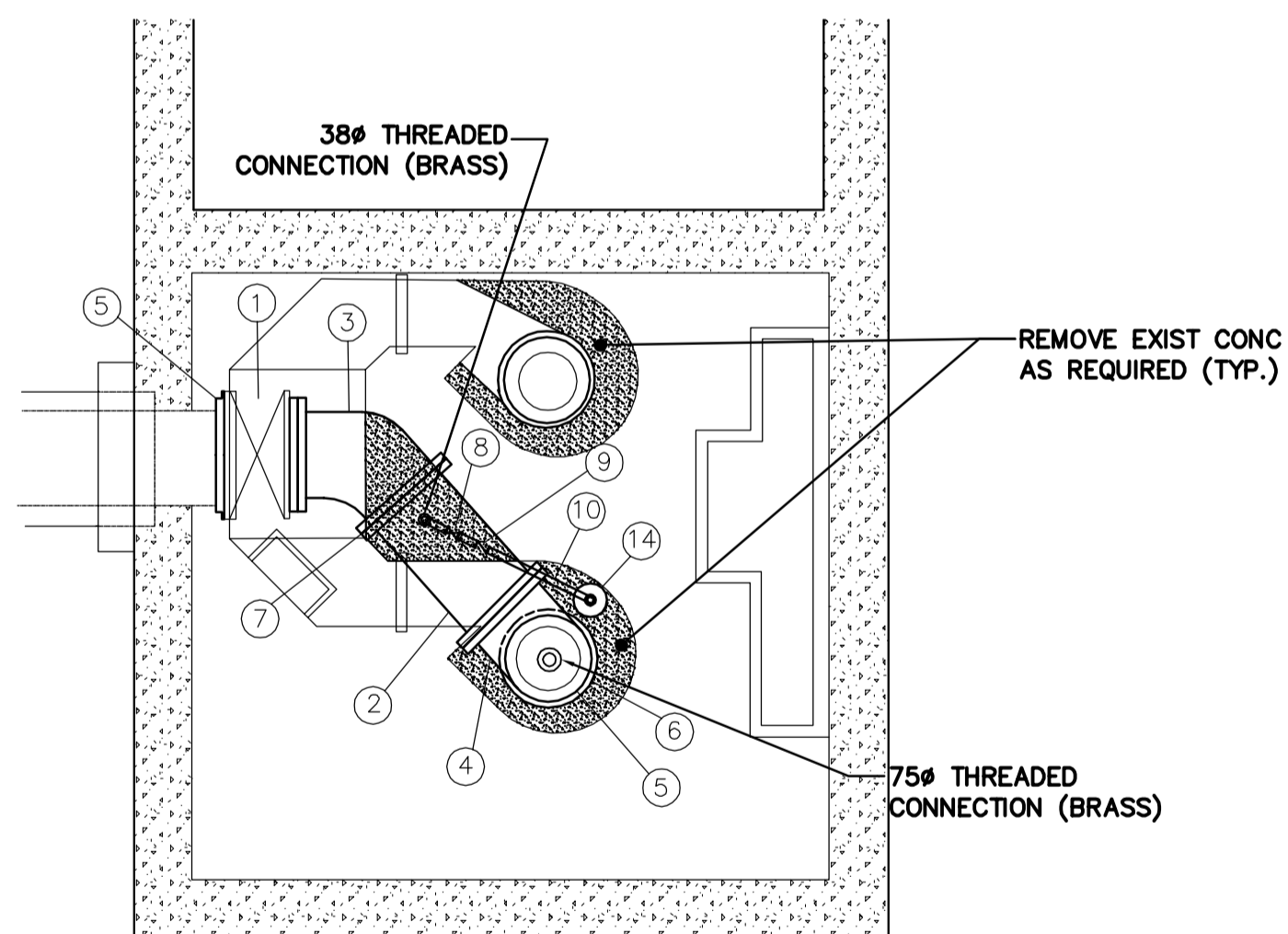
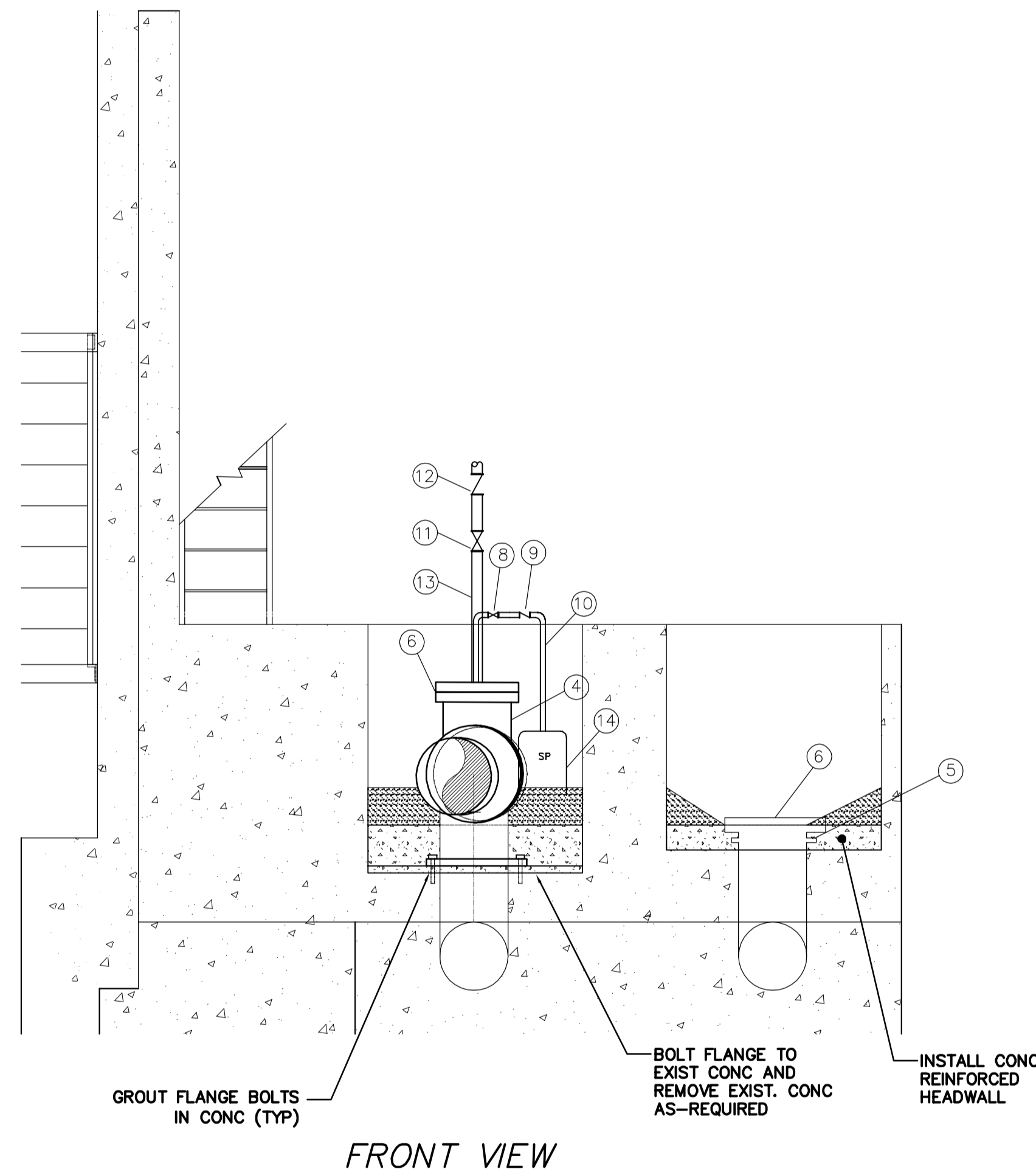


SIDE VIEW



TOP VIEW



FRONT VIEW

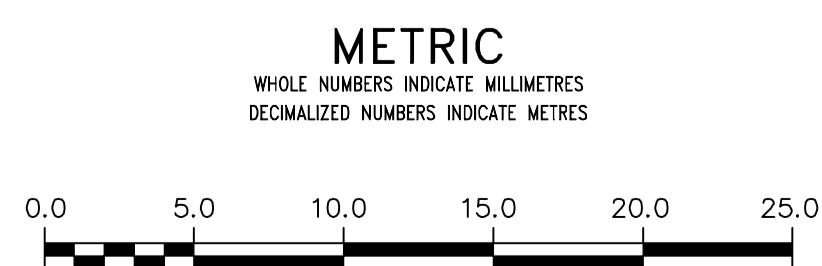
CONSTRUCTION NOTES:

1. ALLOWABLE SHUTDOWN TIME: MAX. 7.0 HRS OR AS DETERMINED BY COLLECTIONS STAFF
2. CRITICAL BASEMENT ELEVATION: 224.318
3. REMOVE EXISTING CONCRETE PIPING, VALVES, FITTINGS, AND OTHER MATERIALS AS REQUIRED. INSTALL NEW PUMPS, MOTORS, PIPING, VALVES AND FITTINGS AS SHOWN.
4. PROVIDE TEMPORARY BY-PASS PUMPING OF WASTEWATER DURING CONSTRUCTION.
5. INSTALL MECHANICAL WORKS AS INDICATED AND ACCORDING TO MANUFACTURER'S SPECIFICATIONS.
6. EXCAVATIONS TO BE BACKFILLED WITH CLASS 3 OR CLASS 5 BACKFILL IN ACCORDANCE WITH CW 2030 AND SD-002.
7. FLANGE NUTS & BOLTS TO BE ASTM A307.
8. GASKETS TO BE FULL FACED, 3 THICK RED RUBBER.
9. CONTRACTOR TO CONFIRM ALL DIMENSIONS BEFORE ASSEMBLING PIPE.
10. ALL ANCHOR BOLTS TO BE ASTM A276 TYPE 316 SS.

MATERIALS LIST

ITEM	DESCRIPTION	ENDS	LENGTH	QUANTITY
1	500# NON RISING STEM GATE VALVES W/PEDESTAL OPERATORS	FL	3462±	1
2	500# PIPE	FL+PE	786±	1
3	500# CAST IRON 45° BEND	FL	-	1
4	500# CAST IRON TEE	FL	-	1
5	500# DI FLANGED WALL THIMBLE	-	-	2
6	500# DI BLIND FLANGE	-	-	2
7	500# UNI-FLANGE	-	-	1
8	38# GATE VALVE	-	-	1
9	38# CHECK VALVE	-	-	1
10	38# TYPE 316 SS PIPE	-	-	1
11	75# ONE WAY AIR VALVE	-	-	1
12	75# CHECK VALVE	-	-	1
13	75# TYPE 316 SS PIPE	-	-	1
14	110V, MIN 1/3 HP, SUMP PUMP W/FLOAT SWITCH	-	-	1

NOTE:
 LENGTHS & DIMENSIONS SHOWN AS ± TO BE FIELD CONFIRMED BY CONTRACTOR
 * ITEMS SUPPLIED BY CITY
 - CONTRACTOR TO SUPPLY CABLES & CONDUIT FROM SUMP PUMPS TO ELECTRICAL
 - OUTLETS IN COMMUNOTOR ROOM
 - VALVE PEDESTAL OPERATORS TO HAVE POSITION INDICATORS.



LOCATION APPROVED
 UNDERGROUND STRUCTURES

SUPV. U/G STRUCTURES COMMITTEE DATE

NOTE:
 LOCATION OF UNDERGROUND STRUCTURES AS SHOWN ARE BASED ON THE BEST INFORMATION AVAILABLE BUT NO GUARANTEE IS GIVEN THAT ALL EXISTING UTILITIES ARE SHOWN OR THAT THE GIVEN LOCATIONS ARE EXACT. CONFIRMATION OF EXISTENCE AND EXACT LOCATION OF ALL SERVICES MUST BE OBTAINED FROM THE INDIVIDUAL UTILITIES BEFORE PROCEEDING WITH CONSTRUCTION.

NO.	REVISIONS	DATE	BY

DESIGNED BY NC

CHECKED BY NC

DRAWN BY RS

APPROVED BY NC

SCALE:
 HORIZONTAL NTS
 VERTICAL NTS

DATE 2015 09 25

RELEASED FOR CONSTRUCTION

DATE

PLOT DATE: 2015 09 25

ENGINEER'S SEAL

ORIGINAL SIGNED BY N.M. CONTI 15/09/25

CONSULTANT DRAWING NUMBER

THE CITY OF WINNIPEG
 WATER AND WASTE DEPARTMENT
 ENGINEERING DIVISION

2015 COMMUNOTOR CHAMBER PIPING & VALVE UPGRADES
 HAWTHONE LIFT STATION
 HAWTHORNE AVENUE & KILDONAN DRIVE

SHEET 9 OF 11
 CITY DRAWING NUMBER
 1-0145L-M0001-001