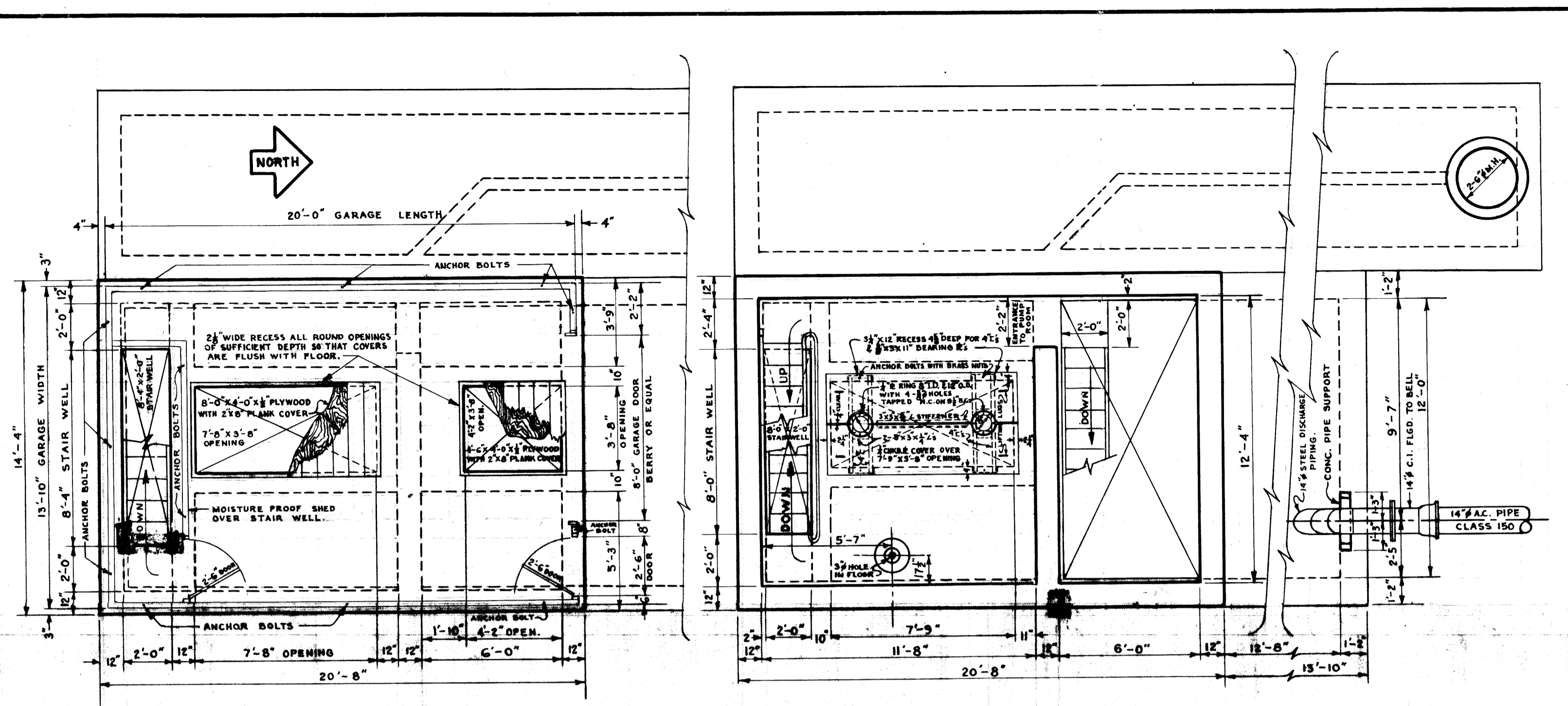


298

REF. OR DRAWING NO.

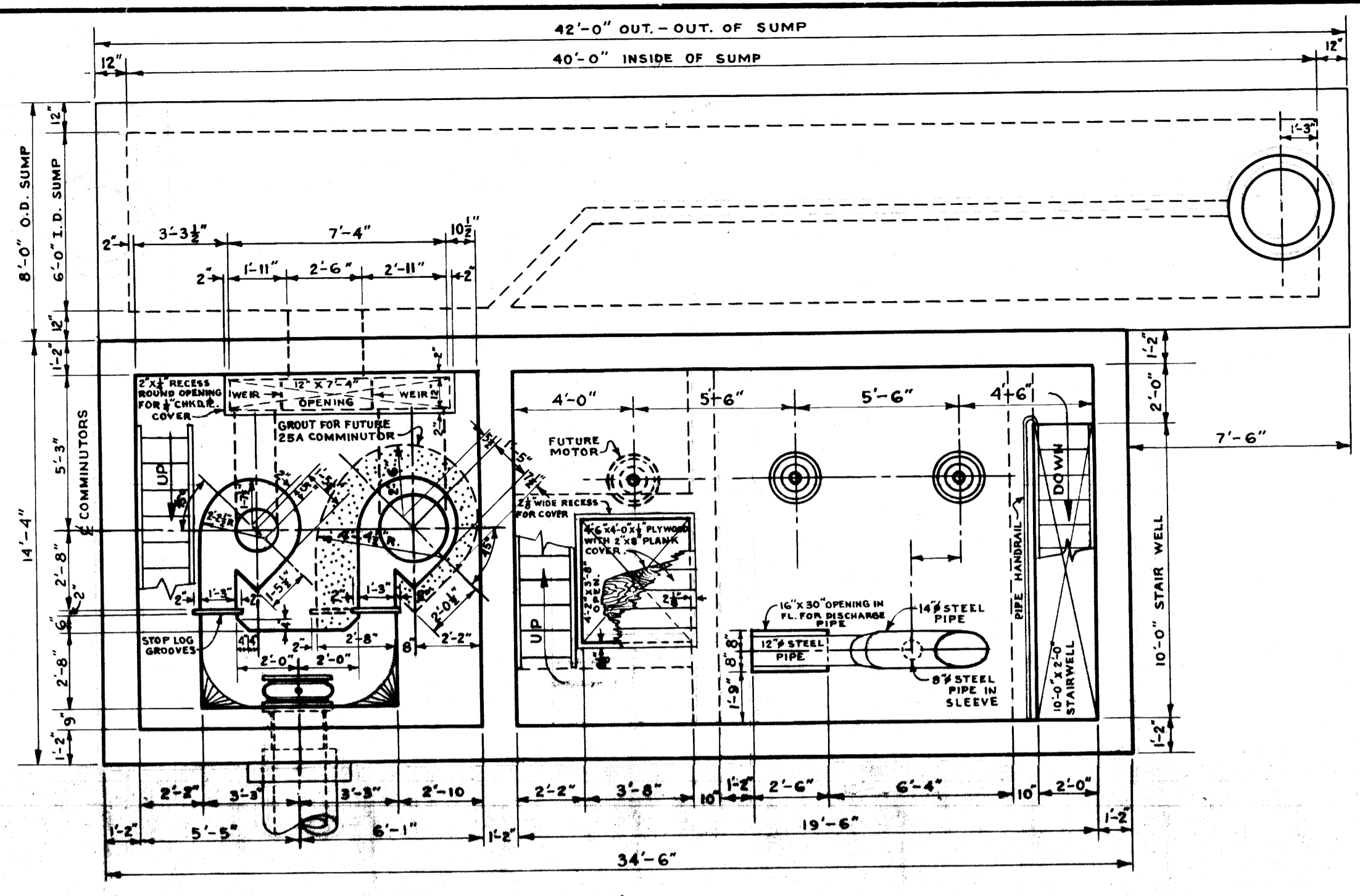
DETAILS

file # SP10057

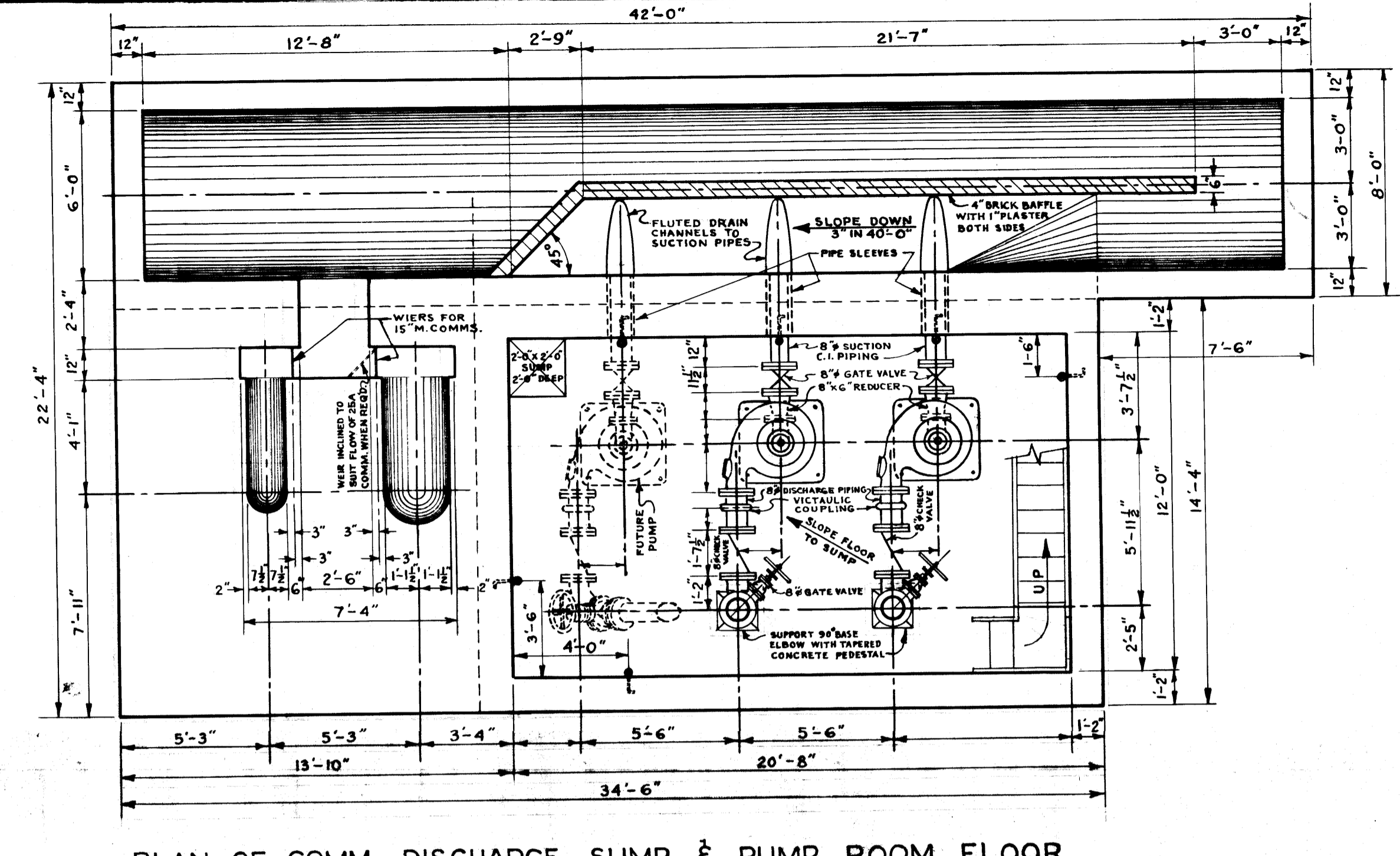


SUPERSTRUCTURE FLOOR PLAN
EL. 759.0'

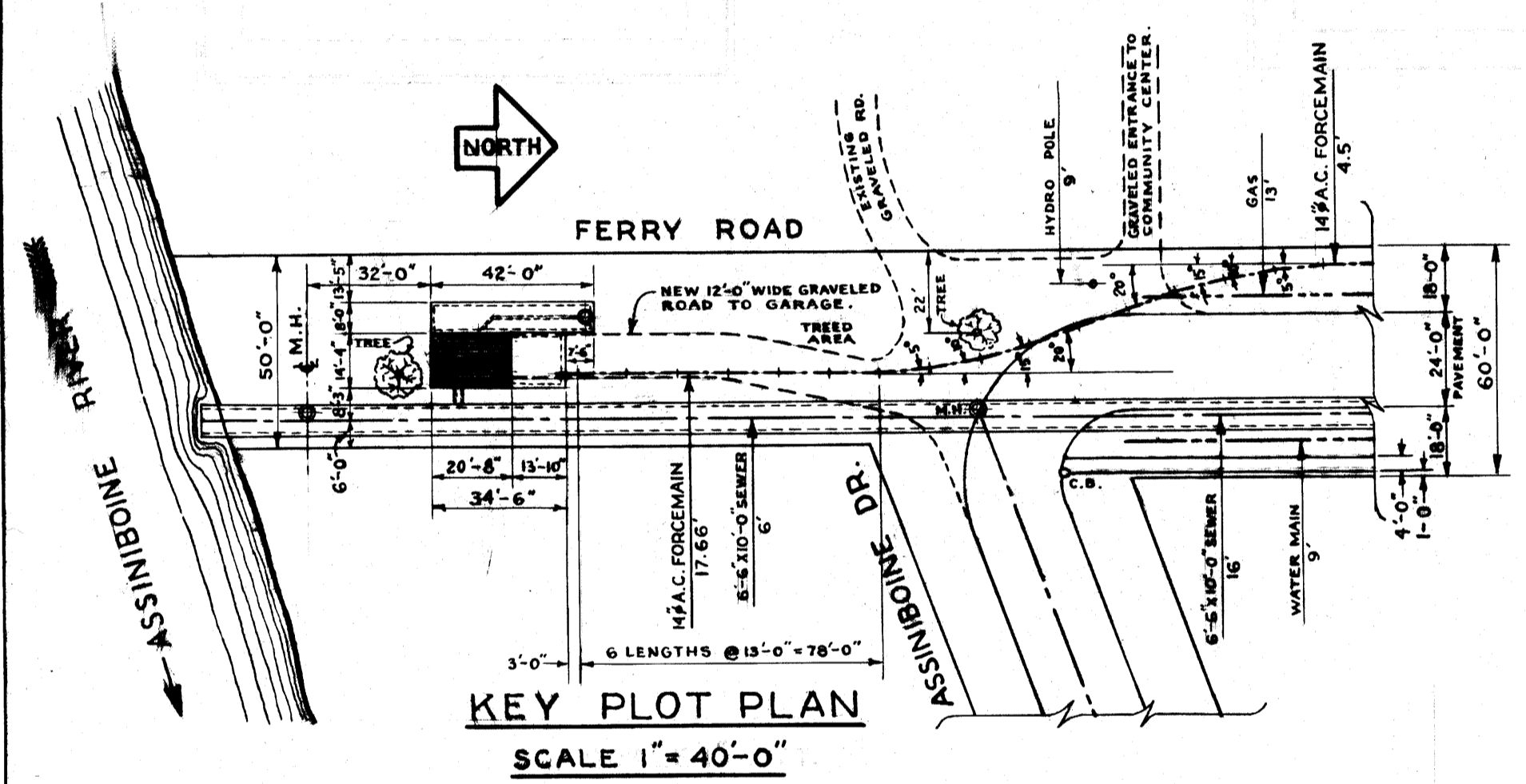
PLAN OF COMM. MOTOR ROOM FLOOR
EL. 749.98'



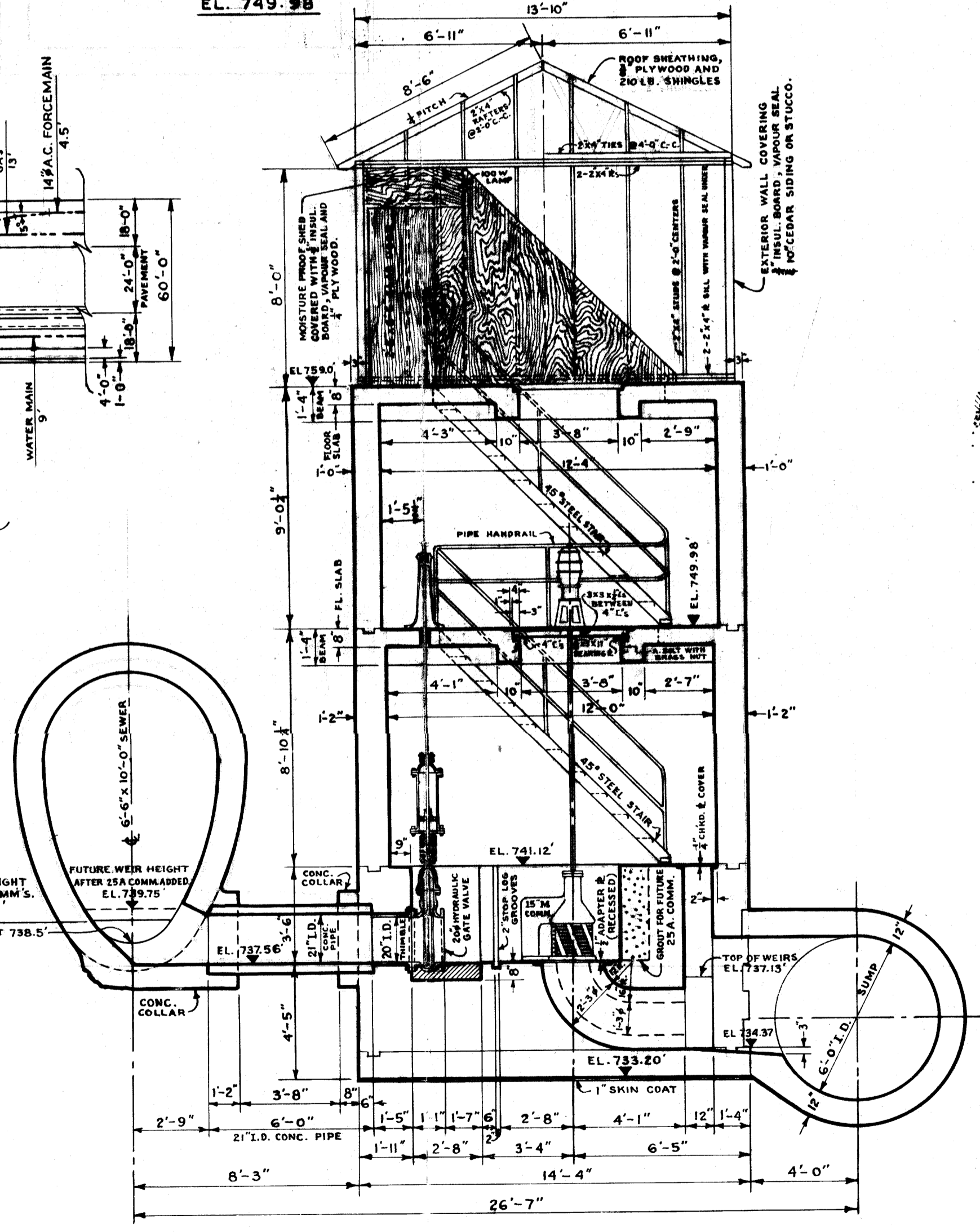
PLAN OF COMMINUTOR INLET & PUMP MOTOR ROOM FLOOR
EL. 741.12'



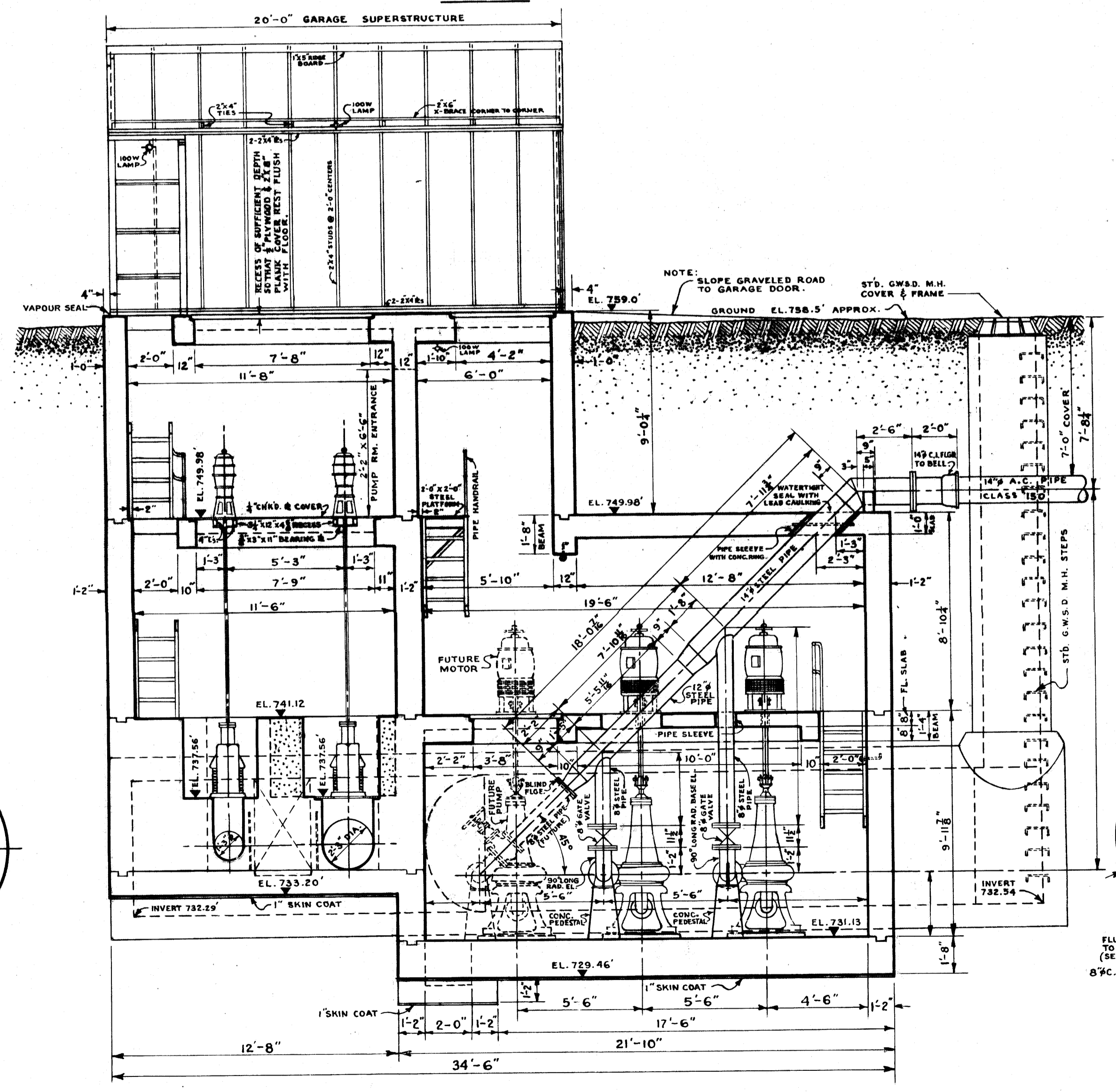
PLAN OF COMM. DISCHARGE, SUMP & PUMP ROOM FLOOR
EL. 731.13'



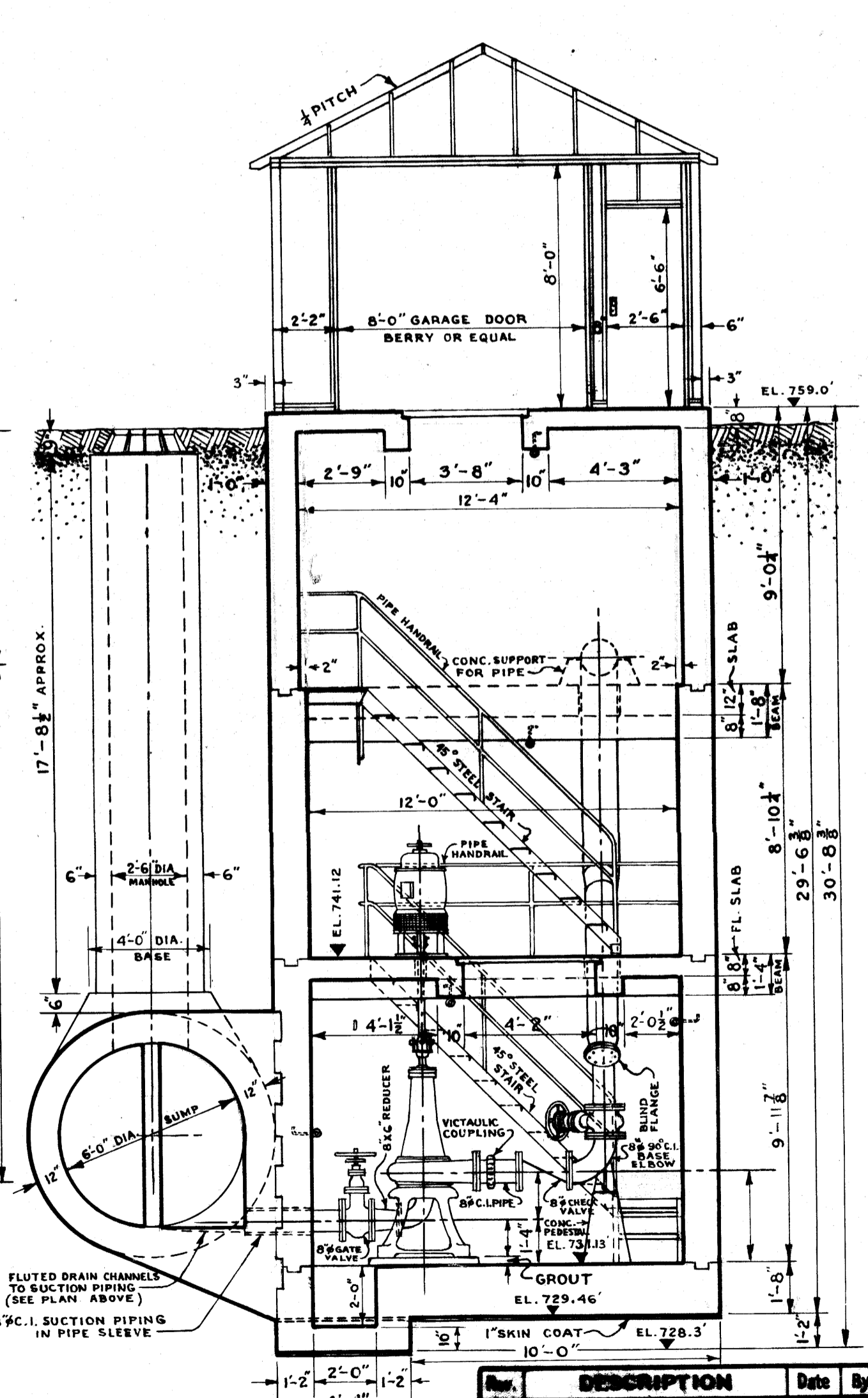
KEY PLOT PLAN
SCALE 1" = 40'-0"



X-SEC. THRU COMMINUTOR CHAMBER
LOOKING SOUTH



LONGITUDINAL SECTION
LOOKING WEST



X-SEC. THRU PUMP CHAMBER
LOOKING NORTH

NOTE:
SEE DRWG. # 298 B FOR
UP TO DATE REVISIONS
OCT. 82. m.d.

Micro-Filmed 1985

Rev.	DESCRIPTION	Date	By

DRAWN H. BUXMAN GATE JAN. 88 TRACED " CHECKED APPROVED		TITLE: FERRY RD. COMMINUTOR AND PUMPING STATION	
GEN. MGR.		SCALE: 1/4" = 1'-0" & AS NOTED. 298	