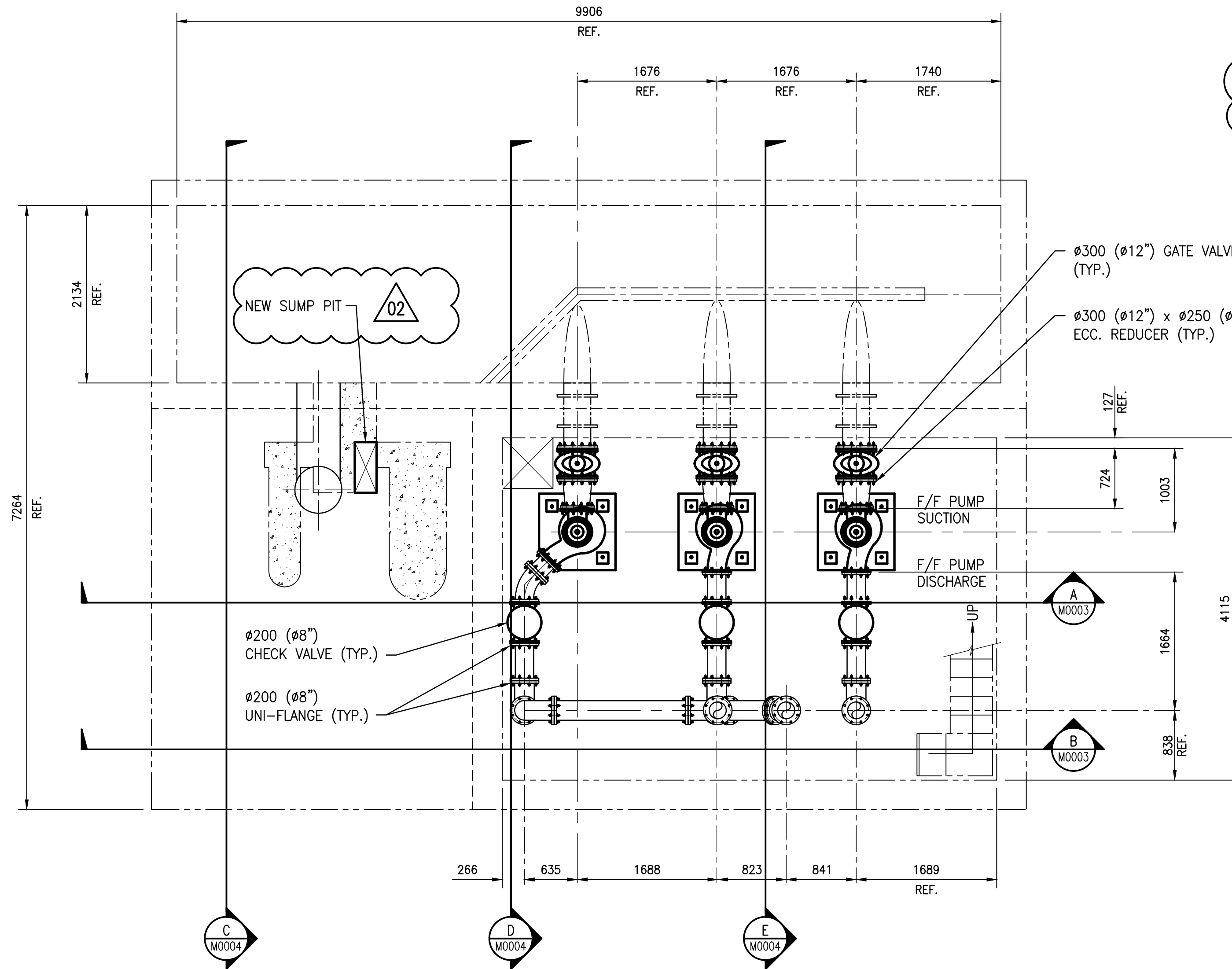


-ALL PLANS-



PLAN ABOVE EL. 224.269 (735'-9 1/2")
SCALE: 1 : 40

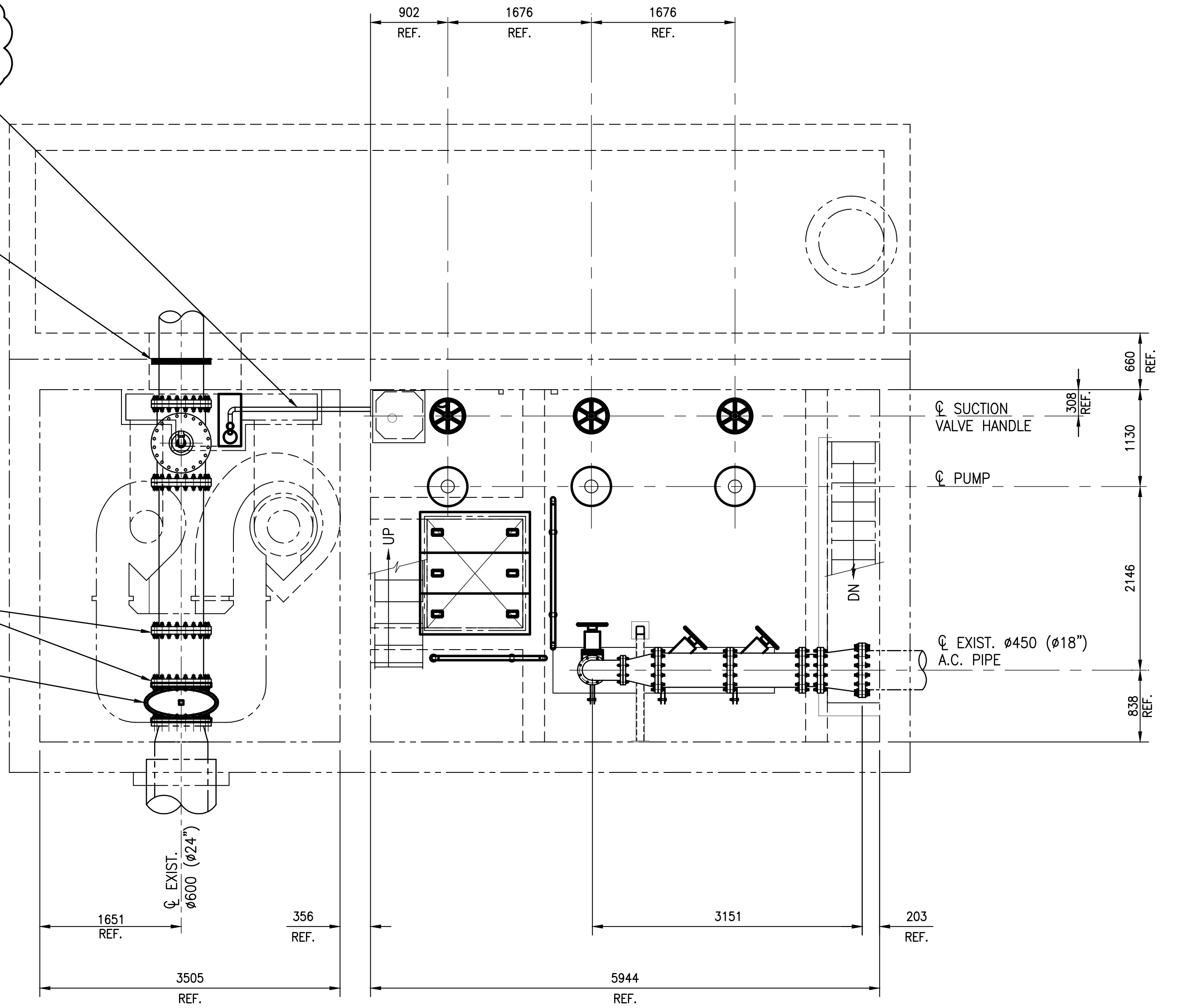
SECTION ARROWS SHOWN TYPICAL BOTH PLAN VIEWS

02 NEW SUMP PIT -
ROUTE TO ABANDONED
SIGHT GLASS OPENING
TO WET WELL

500 (20 inch) PUDDLE FLANGE

500 (20 inch) UNI-FLANGE

500 (20 inch) GATE VALVE

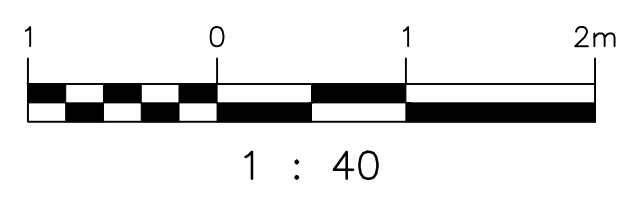


T.O. CONC.
EL. 226.589
(743'-4 3/8")

PLAN ABOVE EL. 227.635 (746'-10")
SCALE: 1 : 40

LAST SAVE: 2015/10/08 - 3:14pm
PATH: M:\29179\ENGR\45MECC\DD - General DWG\1-0169L-M0002-001-02.dwg

DRAWING NUMBER	REFERENCE DRAWINGS
403-B	AINSLIE COMM. & PUMPING STATION - SUPERSTRUCTURE & DETAILS
403-A	AINSLIE COMM. & PUMPING STATION - REINFORCING DETAILS
403	AINSLIE COMM. & PUMPING STATION



APEGM
Certificate of Authorization
SNC-Lavalin Inc.
No. 4489

DESIGNED BY:	I. PARKINSON	CHECKED BY:	J. ALO
DRAWN BY:	B. DICKSON	APPROVED BY:	
SCALE:	1:40	ISSUED FOR CONSTRUCTION	BY:
DATE:	2015/06/22	DATE:	
CONSULTANT NO.:			
NO.	REVISIONS	DATE	DESIGN CHECK

ENGINEER'S SEAL
PRELIMINARY
NOT TO BE
USED FOR
CONSTRUCTION

THE CITY OF WINNIPEG
WATER AND WASTE DEPARTMENT
OLIVE WASTEWATER PUMPING STATION
2015 UPGRADES
PLANS
PIPING ARRANGEMENT

CITY DRAWING NUMBER
1-0169L-M0002

SHEET
001

REV.
02

SIZE
A1