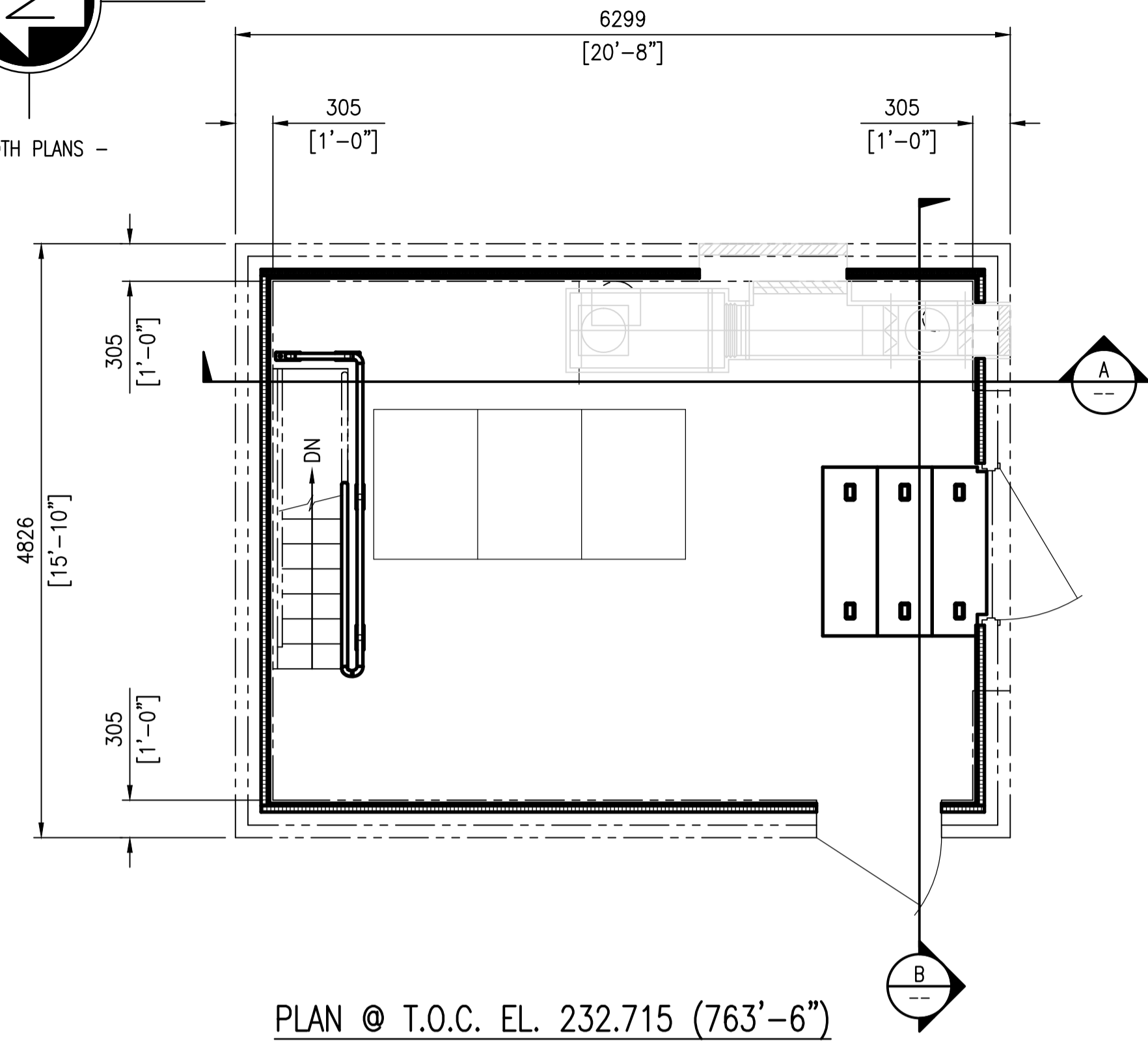


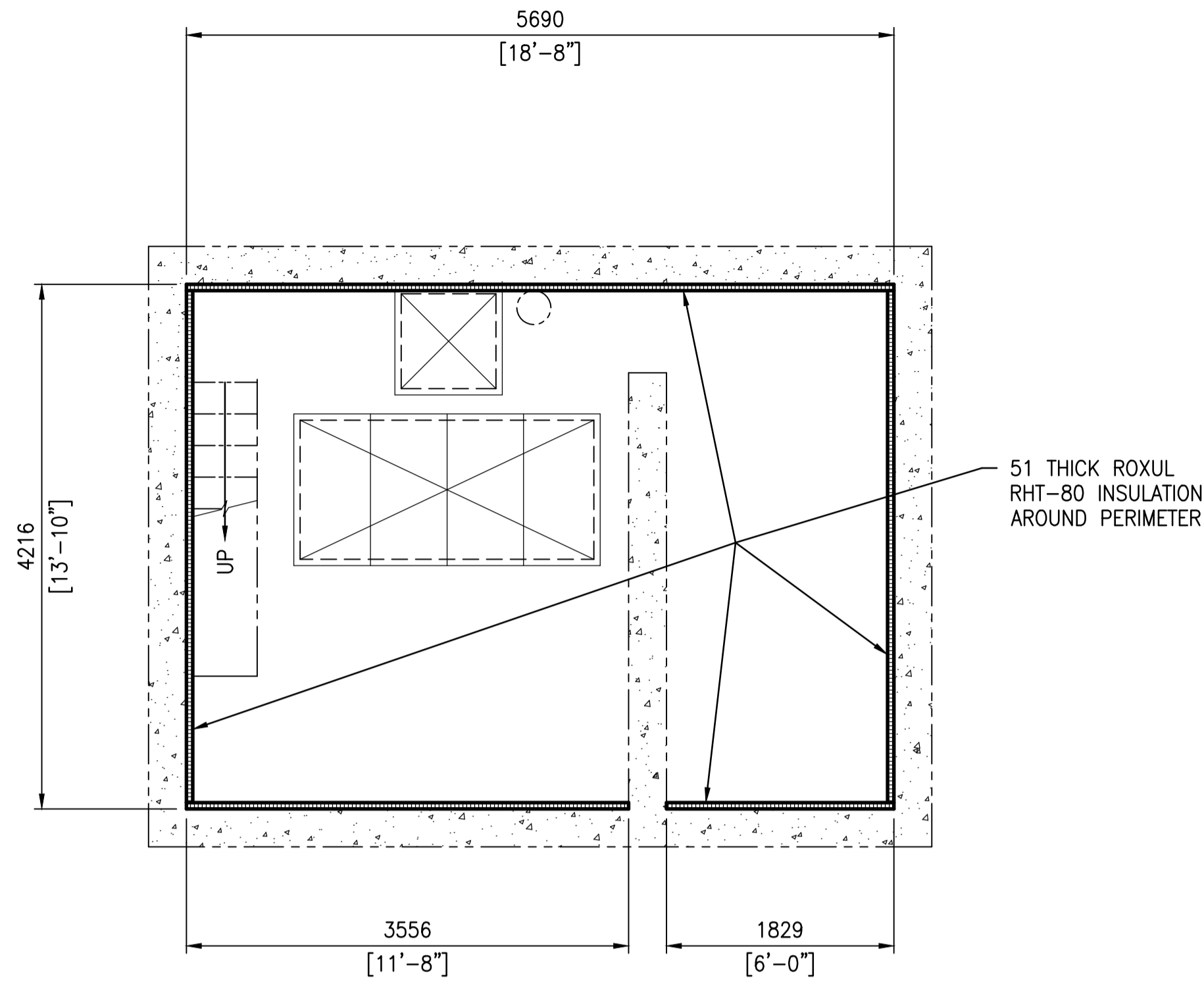
- BOTH PLANS -



PLAN @ T.O.C. EL. 232.715 (763'-6")

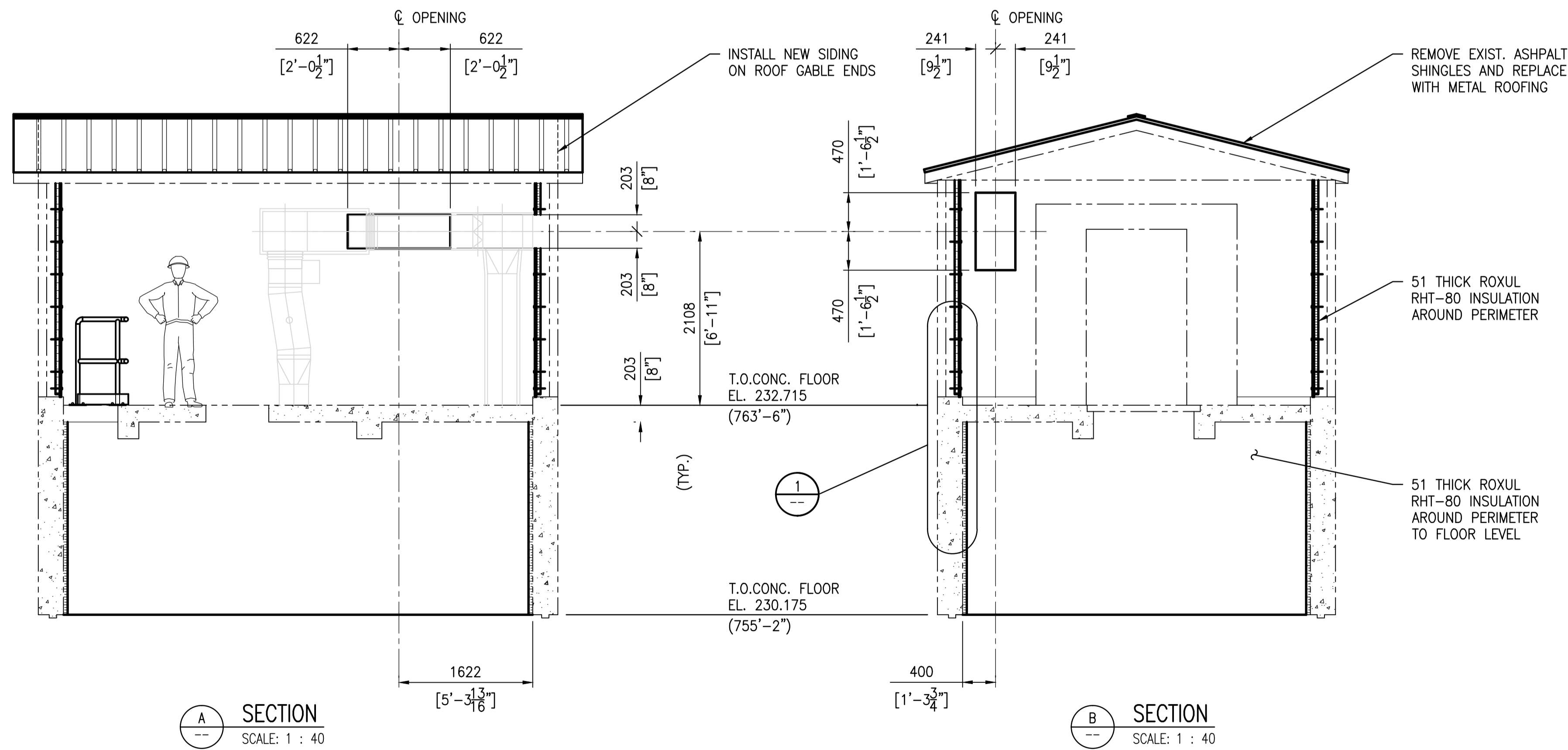
SCALE: 1 : 40

(SECTION ARROWS TYPICAL BOTH PLANS)



PLAN ABOVE T.O.C. EL. 230.175 (755'-2")

SCALE: 1 : 40

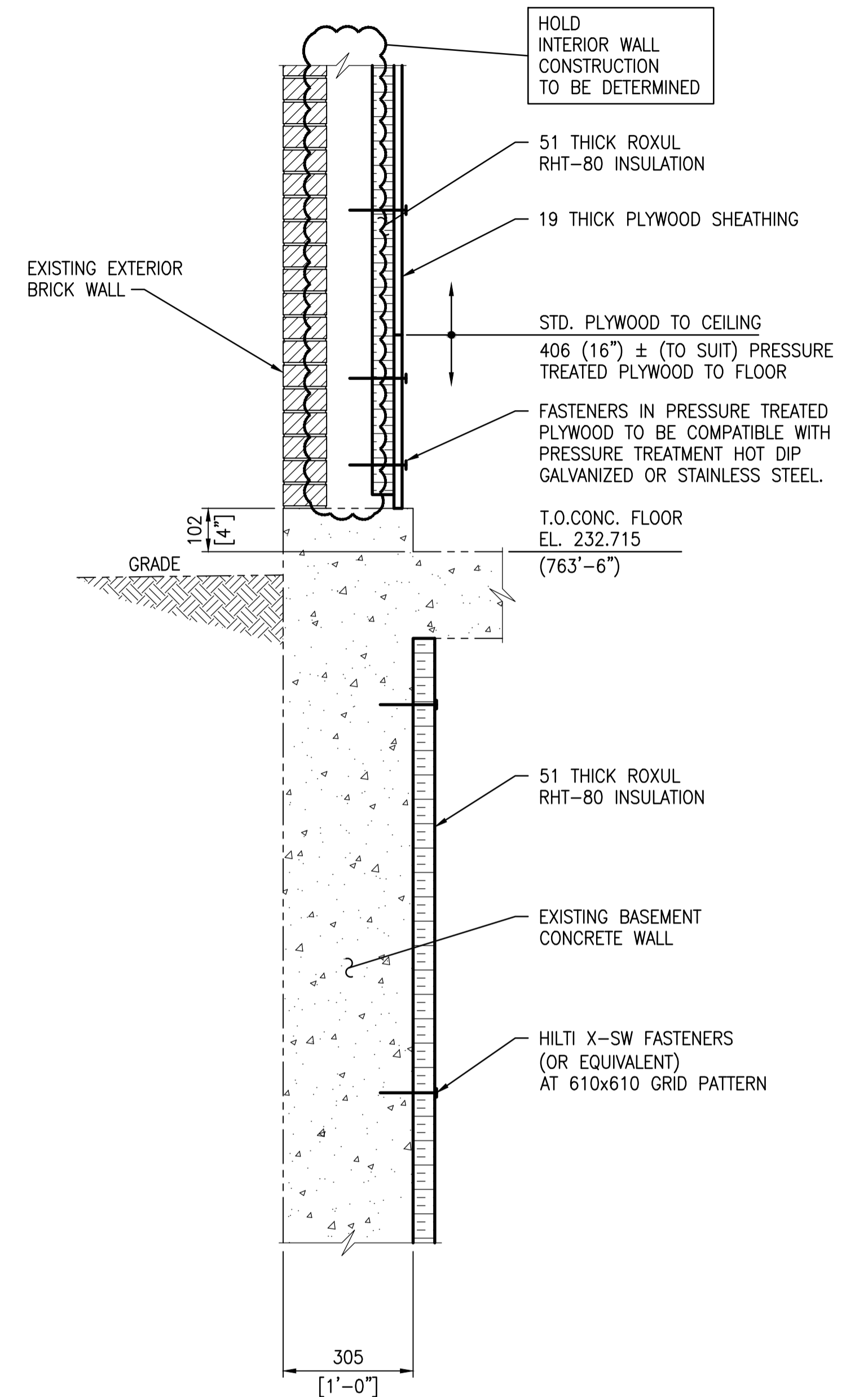


SECTION A SCALE: 1 : 40

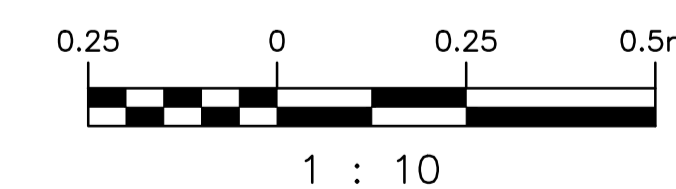
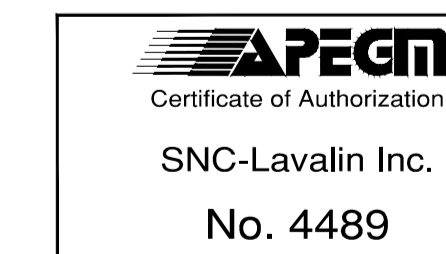
SECTION B SCALE: 1 : 40

NOTES:

- SEE DRAWING 1-0169L-S0004 FOR GENERAL NOTES.
- SEE DRAWING 1-0169L-S0005 FOR STRUCTURAL NOTES.



WALL DETAIL SCALE: 1 : 10



403-B	AINSLIE COMM. & PUMPING STATION - SUPERSTRUCTURE & DETAILS
403-A	AINSLIE COMM. & PUMPING STATION - REINFORCING DETAILS
403	AINSLIE COMM. & PUMPING STATION
DRAWING NUMBER	REFERENCE DRAWINGS

00	ISSUED FOR TENDER	2015/09/17	KJK
NO.	REVISIONS	DATE	DESIGN/CHECK

		SNC-Lavalin Inc. 148 Nature Park Way Winnipeg, MB, Canada R3P 0X7 204-786-8080	
DESIGNED BY:	K. KOTYK	CHECKED BY:	D. COATES
DRAWN BY:	B. DICKSON	APPROVED BY:	I. PARKINSON
SCALE:	AS SHOWN	ISSUED FOR CONSTRUCTION BY:	
DATE:	2015/09/08	DATE:	
CONSULTANT NO.:			

ENGINEER'S SEAL
PRELIMINARY
NOT TO BE
USED FOR
CONSTRUCTION

THE CITY OF WINNIPEG WATER AND WASTE DEPARTMENT	
OLIVE WASTEWATER LIFT STATION 2015 UPGRADES PLANS & ELEVATIONS BUILDING MODIFICATIONS	
CITY DRAWING NUMBER	SHEET REV. SIZE
1-0169L-B0001	001 00 A1