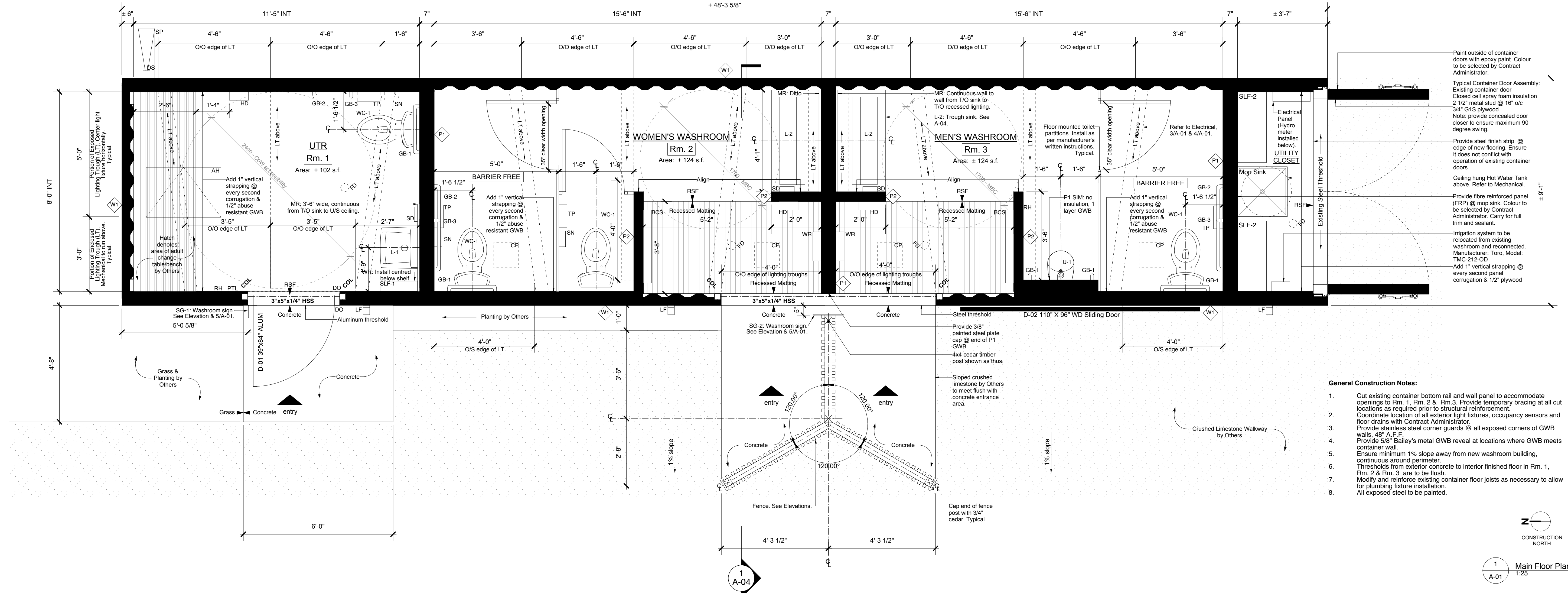


Owner
 The City of Winnipeg
 185 King Street, Main Floor
 Winnipeg, MB R3B1J1

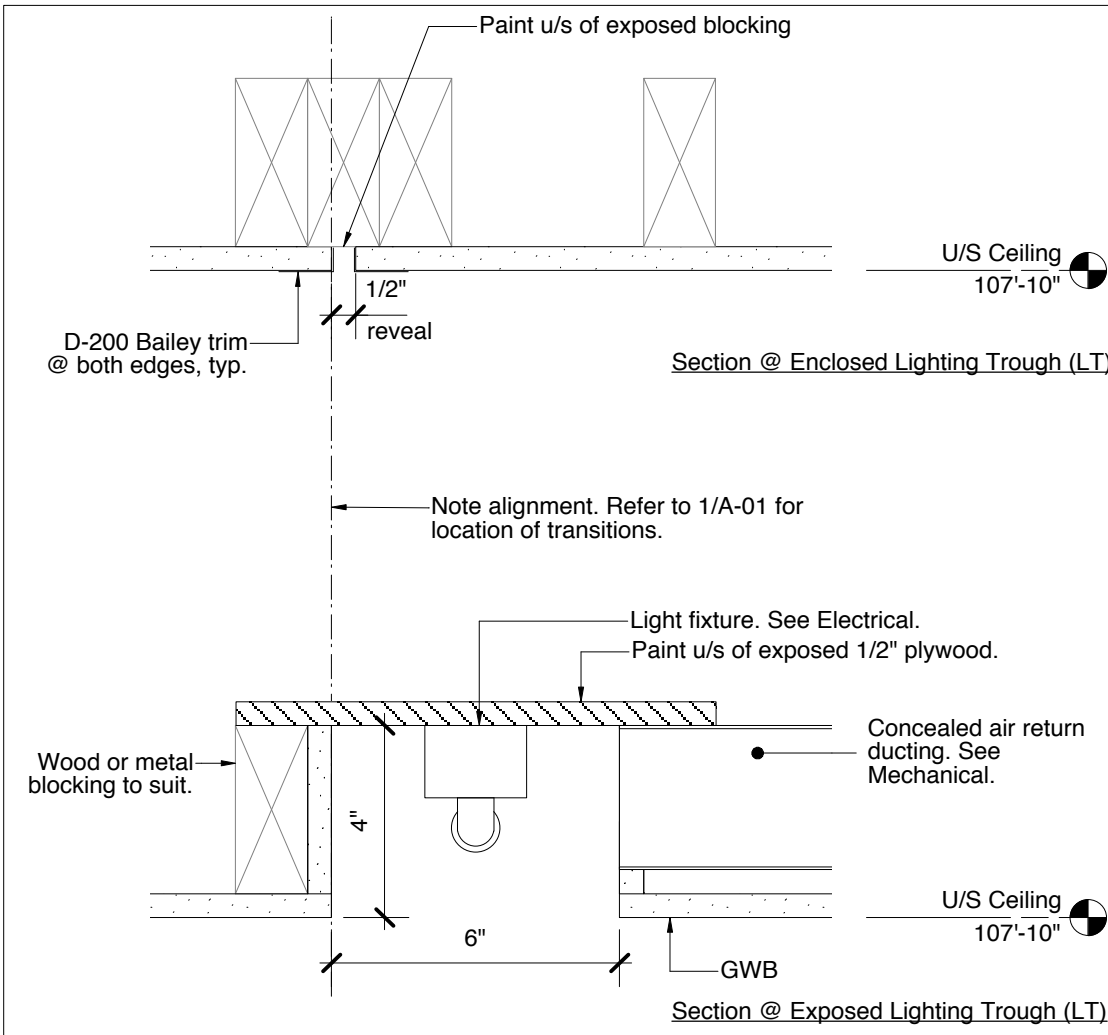
No.	Date	Revision Notes
1	2015.08.18	Issued for Review
2	2015.09.15	Issued for Construction



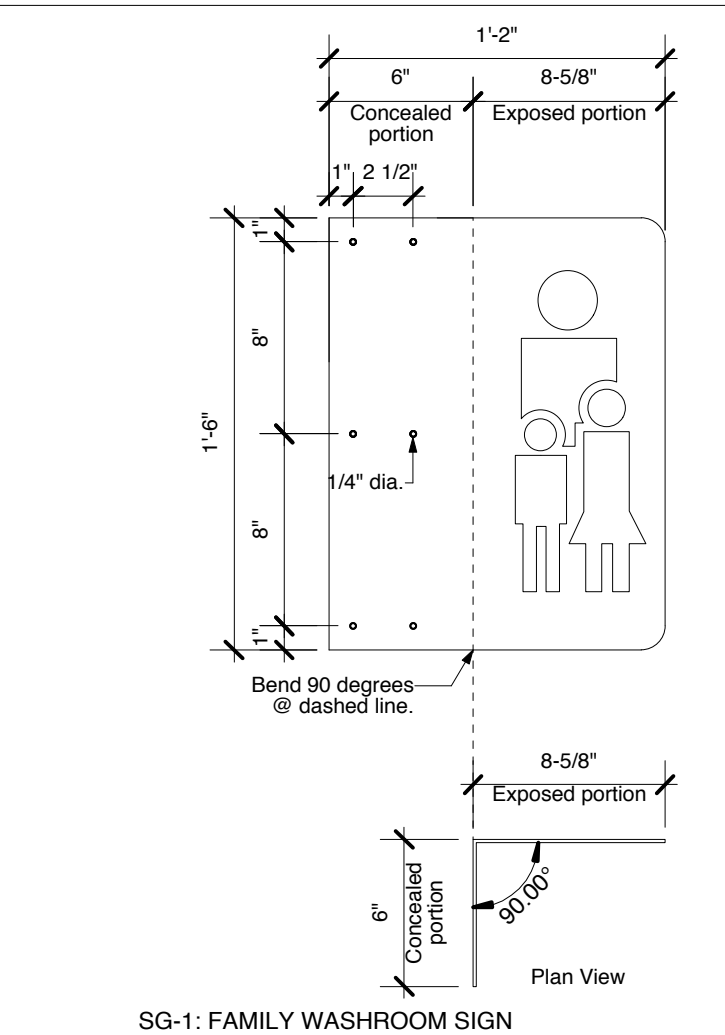
- General Construction Notes:**
1. Cut existing container bottom rail and wall panel to accommodate openings to Rm. 1, Rm. 2 & Rm. 3. Provide temporary bracing at all cut locations as required prior to structural reinforcement.
 2. Coordinate location of all exterior light fixtures, occupancy sensors and floor drains with Contract Administrator.
 3. Provide stainless steel corner guards @ all exposed corners of GWB walls, 48" A.F.F.
 4. Provide 5/8" Bailey's metal GWB reveal at locations where GWB meets container wall.
 5. Ensure minimum 1% slope away from new washroom building, continuous around perimeter.
 6. Thresholds from exterior concrete to interior finished floor in Rm. 1, Rm. 2 & Rm. 3 are to be flush.
 7. Modify and reinforce existing container floor joists as necessary to allow for plumbing fixture installation.
 8. All exposed steel to be painted.



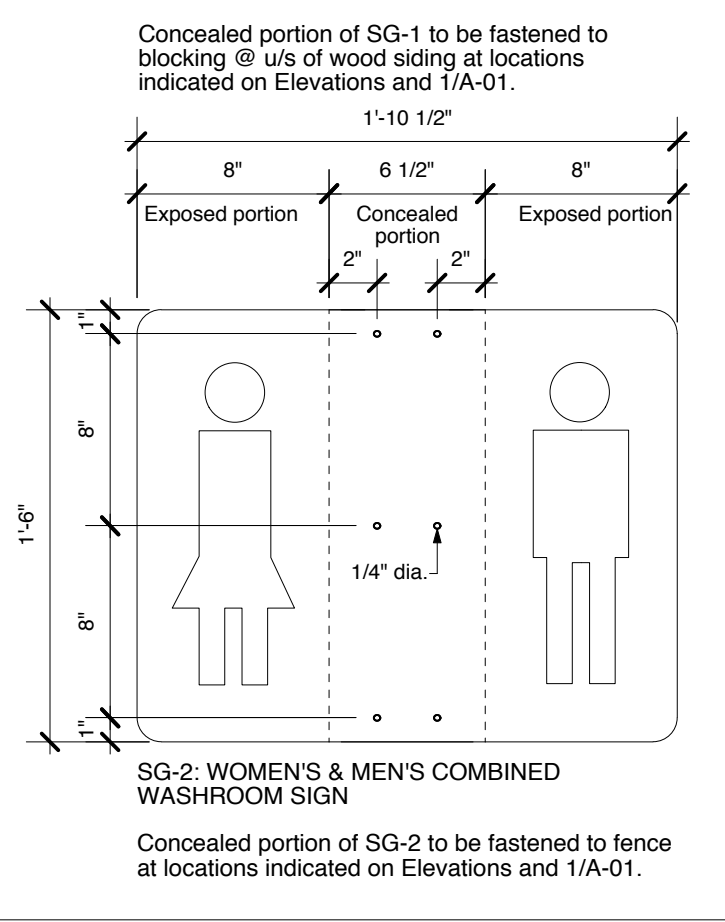
1 Main Floor Plan
 A-01 1:25



3 Section Through Lighting Trough (LT)
 A-01 1:4

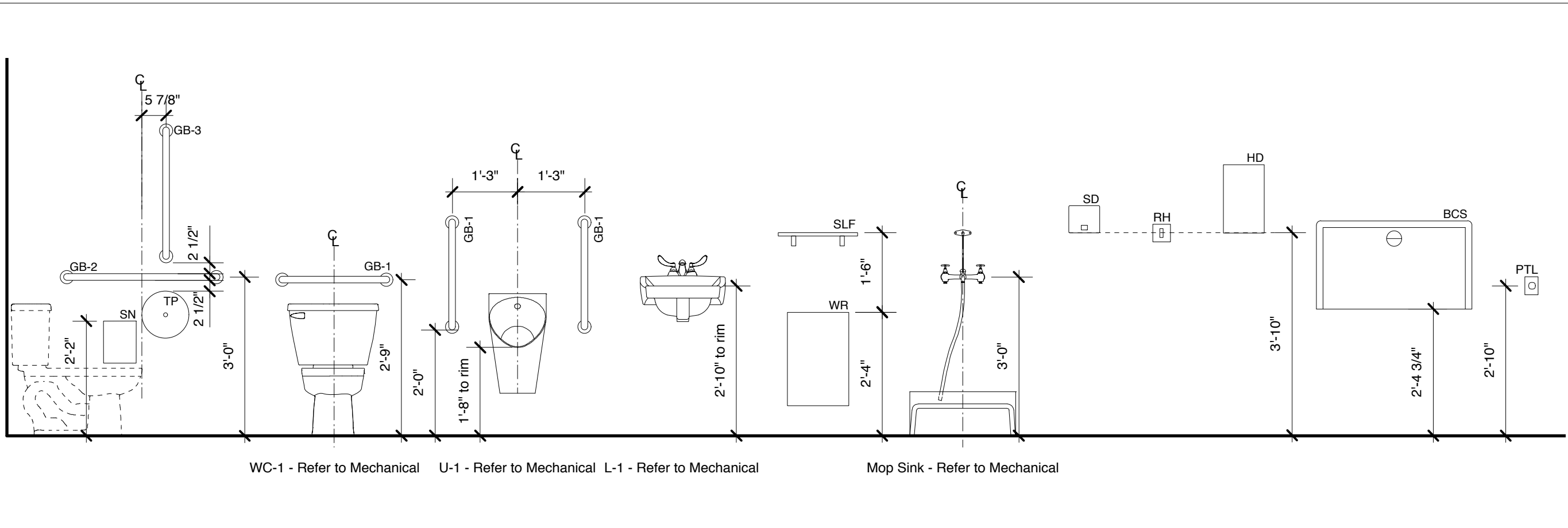


4 Section Through Lighting Trough (LT)
 A-01 1:4



5 Steel Sign (SG) Elevations
 A-01 1:8

TAG	DIAGRAM	DESCRIPTION
PARTITION ASSEMBLIES		
P1		1/2" abuse resistant GWB 6" metal stud at 16" o/c Acoustic mineral wool batt insulation 1/2" abuse resistant GWB or 1/2" G1S plywood (refer to Finish Schedule)
P2		1/2" abuse resistant GWB 3-5/8" metal stud at 16" o/c 1/2" abuse resistant GWB
WALL ASSEMBLIES		
W1		5/8" rough sawn cedar shiplap siding (clear, no knots) 1/2" vertical blocking at each stud to provide air space Closed cell foam insulation 2-1/2" metal stud @ every second panel corrugation, fastened top and bottom to container rails, c/w two mid-span stiffeners @ each stud Existing container corrugated wall panel
FLOOR ASSEMBLIES		
F1		Non-slip sheet flooring 1" plywood subfloor Existing container flooring Existing container floor framing
ROOF ASSEMBLIES		
R1		Mod Bit 1/2" plywood sheathing 20 Ga 2-1/2" 1% sloped metal stud @ 24" o/c, c/w mid-span clip support stiffeners Closed cell spray-foam insulation to fill all cavities Existing container roof Suspended metal track 1/2" abuse resistant GWB



2 Typical Washroom Accessory Heights
 A-01 1:25

HARDWARE SCHEDULE

Provide all hardware for doors and elsewhere as called for on the drawings or otherwise required for the proper installation of the Work of the Bid Opportunity as selected by the City of Winnipeg and the Contract Administrator.

Door: D-01	3 Hinges	TA2314 NRP 4-1/2" X 4"	US32D MK
	1 Deadlatch	4900 Series	628 AD
	1 Lever	4589 Series	RC130 AD
	2 Mortise Cylinder	BEST to suit	628 BE
	1 Electric Strike	5000C-LBM	630 HS
	1 Push Pull Set	BF 15847	US32 RO
	1 Concealed OHT Stop	6-X36	630 RF
	1 Door Operator	6020 D	689 NO
	1 Threshold	171	PE
	1 Weatherstrip and Sweep	By Door Supplier	CA
	1 Logic Controller	CX-33	CA
	1 Push to Lock Button	CM-400/B	CA
	1 Keypad	MKAN	SU

ACCESSORY LEGEND

AH	Access Hatch	Size: 600 x 900; material: Steel construction; Accommodate floor finish per Room Finish Schedule; Framing and anchorage to suit floor construction and maintain flush finish; Location to be coordinated with service lie-in and Contract Administrator. Acceptable manufacturers: Acudor, Babcock-Davis, Bico.
BCS	Baby Change Station	KOALA BABY KARE Model: KB110-SSWM
GB	Grab Bars	BOBRICK model series B-5806. GB-1 24" Grab Bar GB-2 36" Grab Bar GB-3 48" Grab Bar Single-Pane Mirror. Dimensions as per 1/A-01.
MR	Mirror	BOBRICK model B-295x18
TP	Toilet Paper Dispenser	BOBRICK model B-295x18
RH	Robe Hook	FROST Model: 1150.
SN	Sanitary Napkin Disposal	BOBRICK model B-270. Surface mounted.
SLF-1	Stainless Steel Shelf	BOBRICK model B-295x18
SLF-2	Storage Rack	Gorilla Rack, 5-Shelf Unit. Model #GRA341472E5FPBD
SD	Soap Dispenser	BOBRICK model: B412. Surface Mounted on mirror.
WR	Waste Receptacle	BOBRICK model: B-279. Surface Mounted.

- Notes:**
1. Install all accessories as per manufacturer's written instructions.
 2. Install plumb and level, securely and rigidly anchored to substrate.
 3. Verify exact location of accessories for installation and ensure blocking has been provided as required/
 4. Supply two (2) keys for each accessory to City of Winnipeg. Master key all accessories.
 5. Provide steel anchor plates and anchor components for installation as needed.
 6. Provide adequate blocking for all grab bar installation.

ROOM FINISH SCHEDULE

ROOMS	FLOORS	WALLS				CEILINGS								
		NORTH	EAST	SOUTH	WEST	NORTH	EAST	SOUTH	WEST					
RM 1	UTR	RSF	CB	X	EPT	GWB	EPT	GWB	EPT	GL/GWB	EPT	7'-10"	GWB	EPT
RM 2	Women's Washroom	RSF	CB	GWB	EPT	X	EPT	GWB	EPT	GWB/X	EPT	7'-10"	GWB	EPT
RM 3	Men's Washrooms	RSF	CB	GWB	EPT	X	EPT	GWB	EPT	GWB/X	EPT	7'-10"	GWB	EPT
	Utility Closet	RSF	CB	PLY/FRP	-	PLY	-	PLY	-	PLY	-	8'-11"	X	EPT

NOTES:

- *Signs to be fabricated out of 11 gauge steel
- *CAD cutting file for each sign to be provided by Contract Administrator

This drawing not be scaled. The contractors shall verify all dimensions and other data on site prior to commencement of work. Discrepancies, errors, and omissions are to be reported to the Architect prior to proceeding with the Work.

Drawings and specifications as instruments of service are the property of the Architect, and when made, must bear his name. All prints to be returned to the Architect upon request.

No reproduction or revision to these drawings may be made without the permission of the Architect.