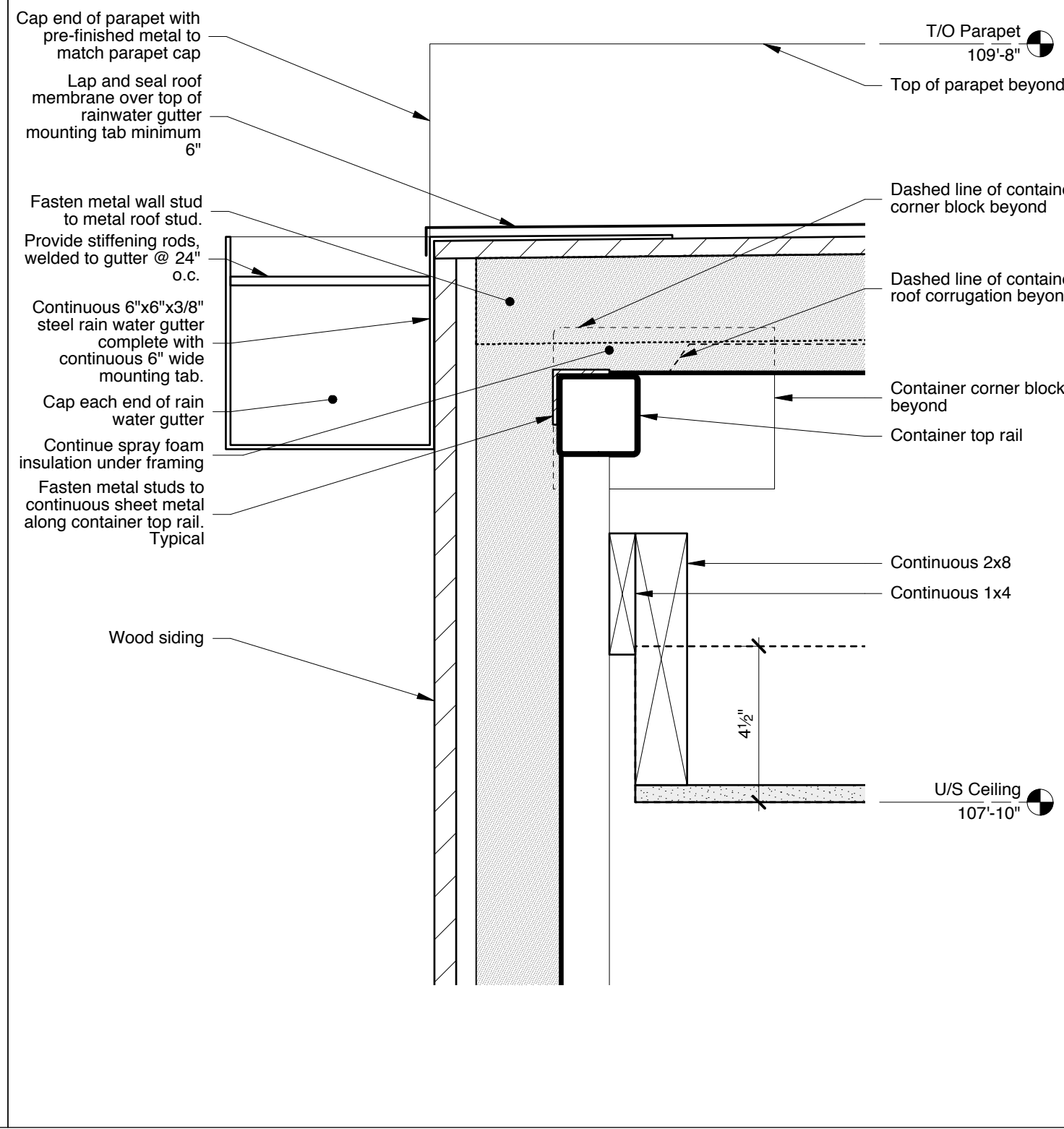
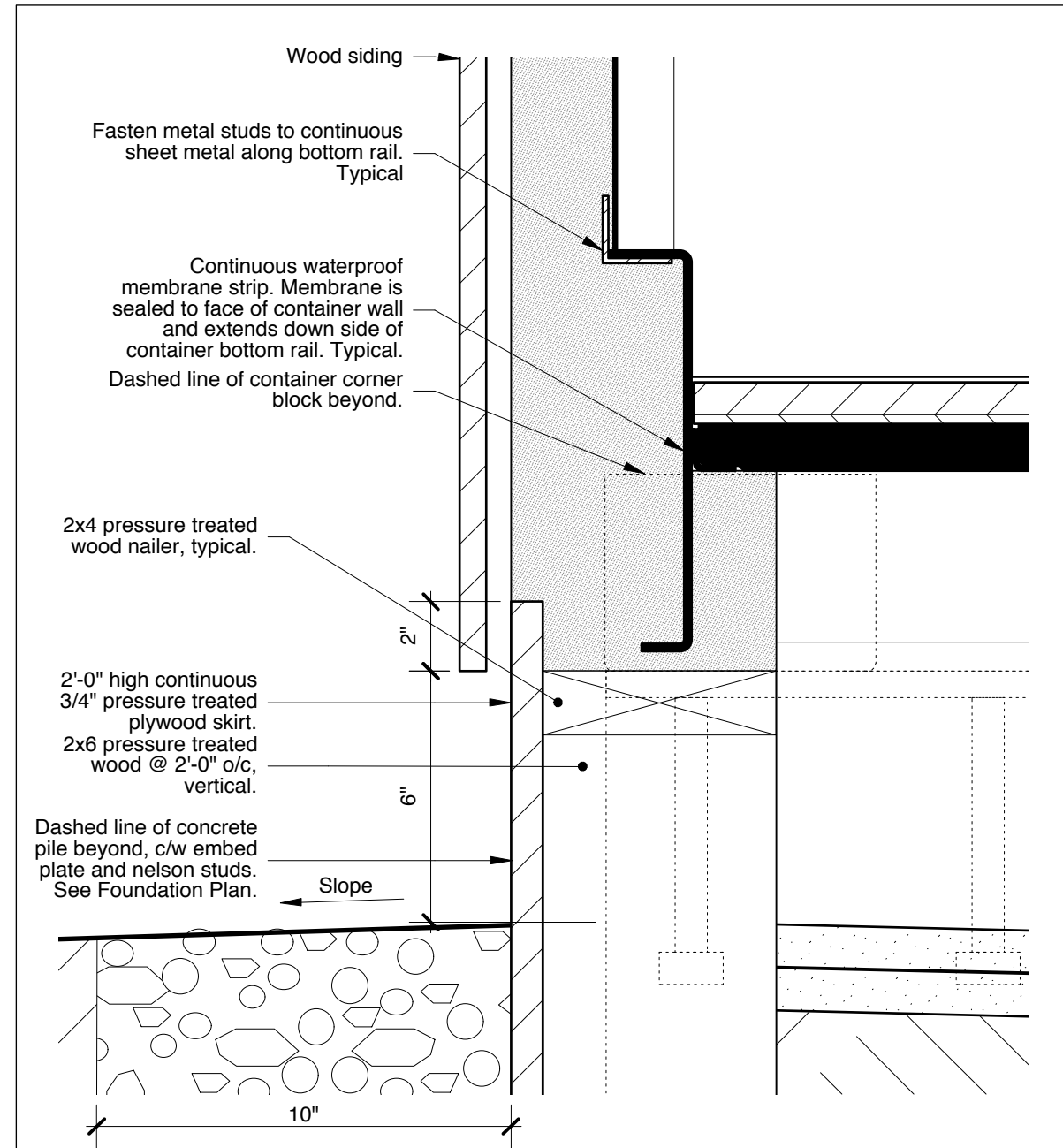


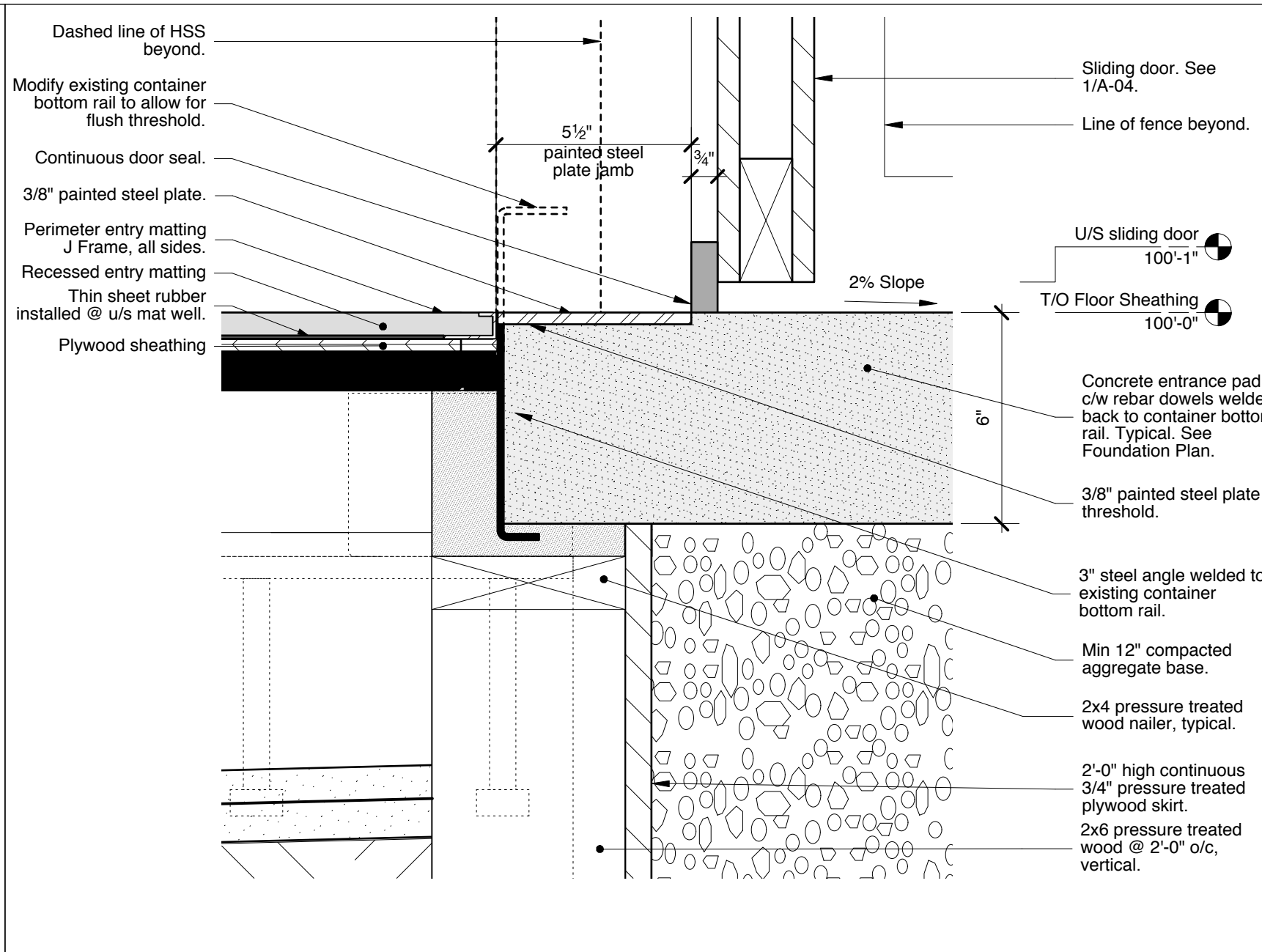
3 Typical Section Detail of Sliding Door Header
A-04 1:4



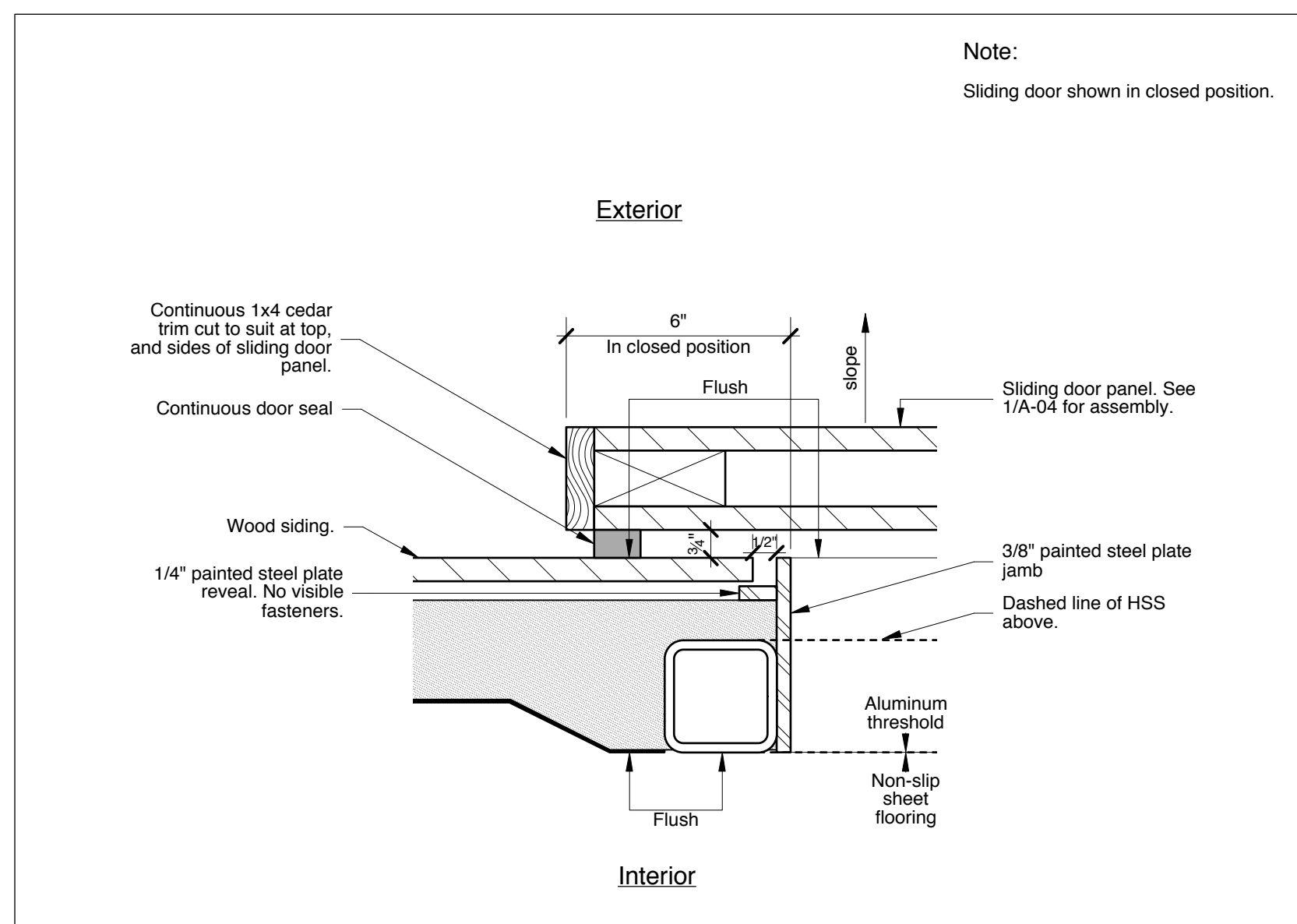
2 Section Detail of Rain Gutter
A-04 1:4



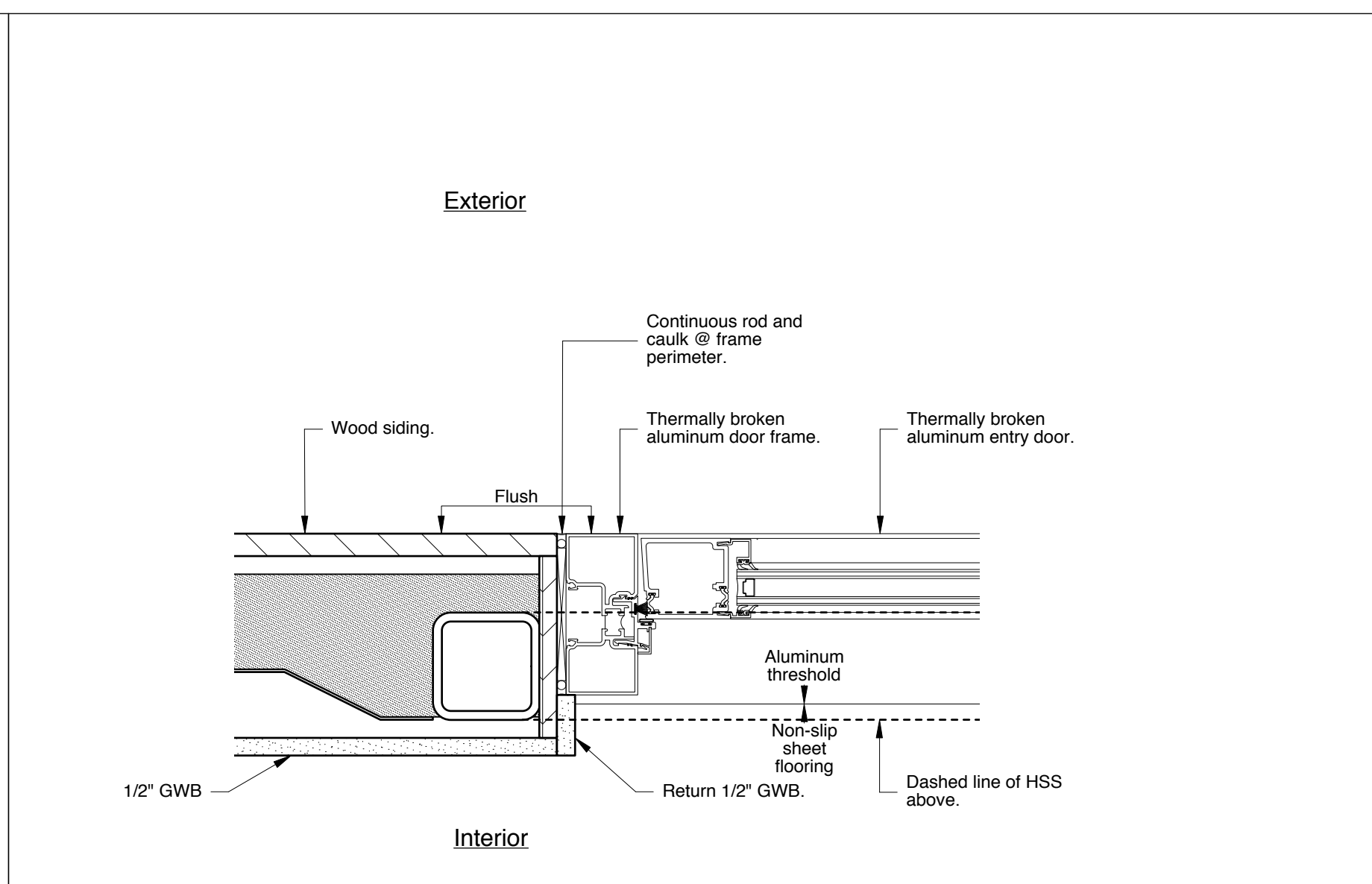
6 Section Detail of Gypsum Ceiling Access Panel
A-04 1:4



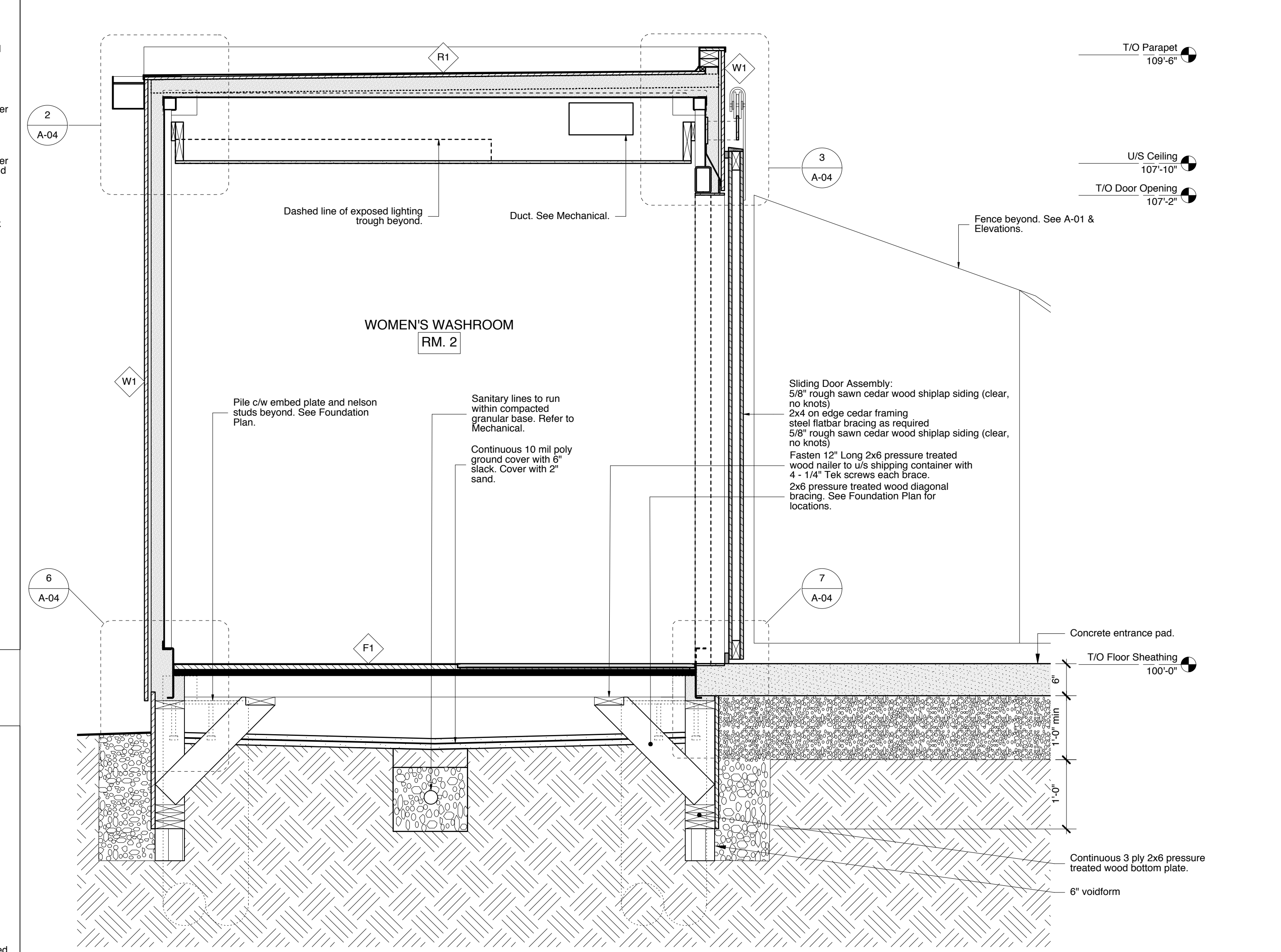
7 Section Detail of Sliding Door Sill
A-04 1:4



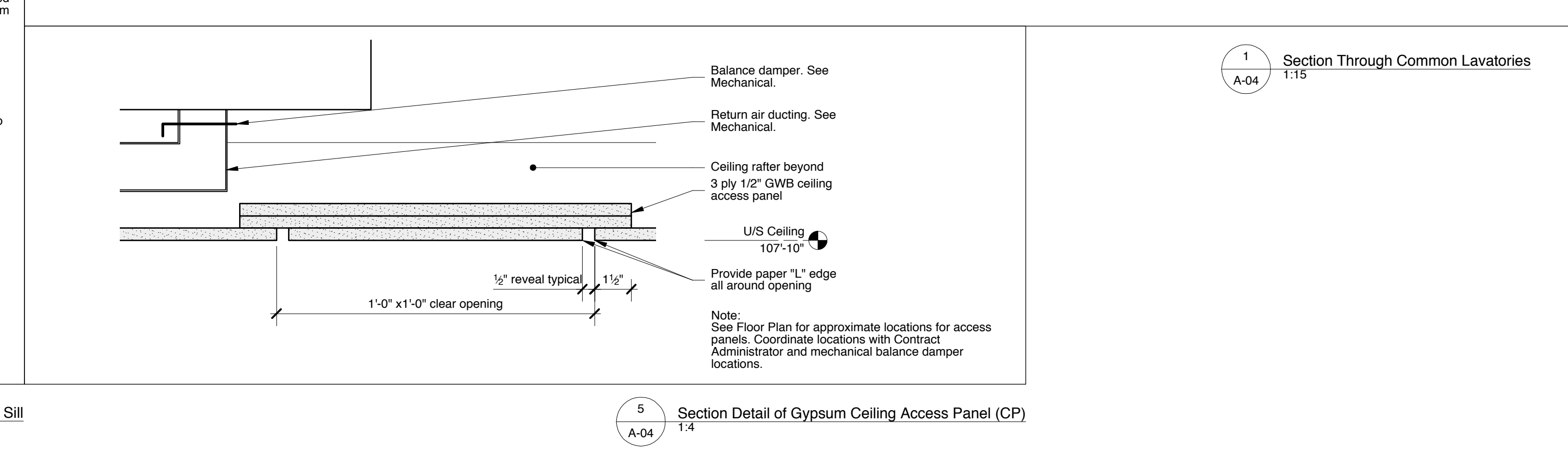
8 Plan Detail of Sliding Door Jamb
A-04 1:4



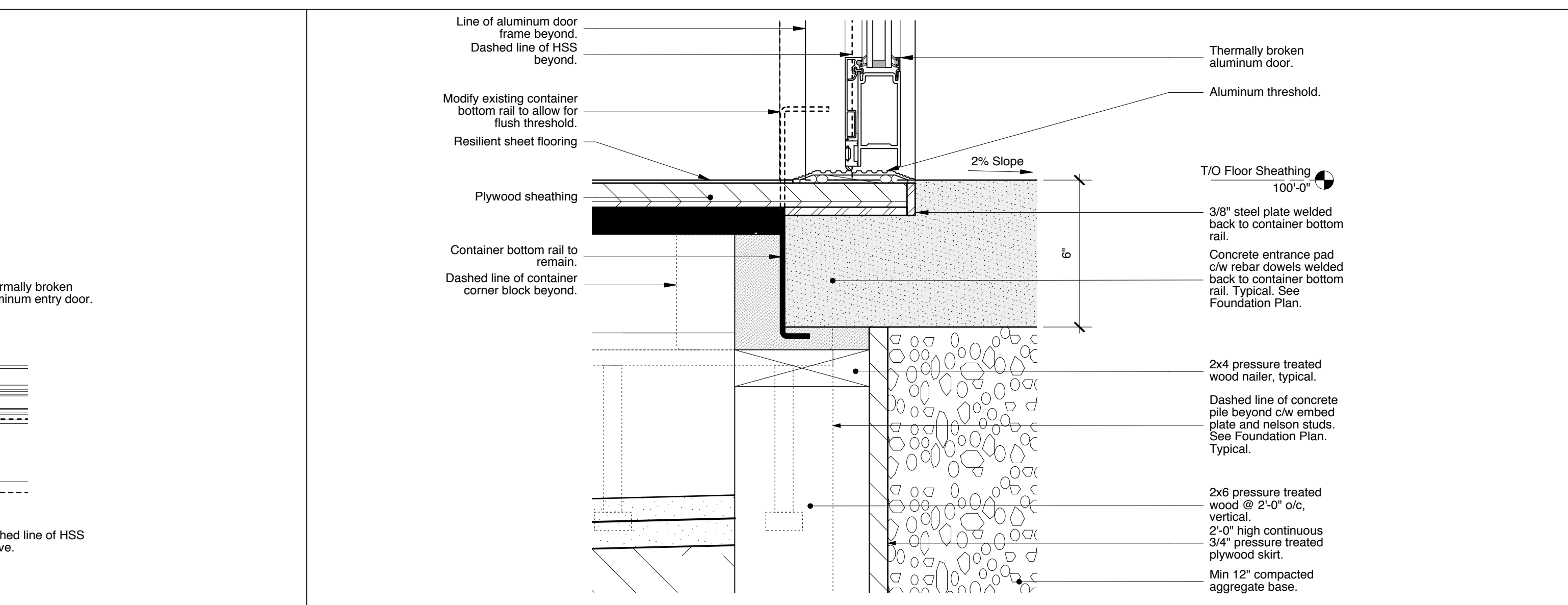
10 Plan Detail of Universal Toilet Room Entrance Jamb
A-04 1:4



1 Section Through Common Lavatories
A-04 1:15

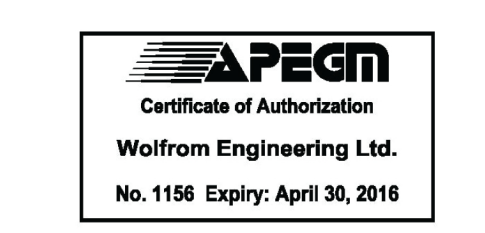


5 Section Detail of Gypsum Ceiling Access Panel (CP)
A-04 1:4



9 Section Detail of Universal Toilet Room Entry Door Sill
A-04 1:4

No.	Date	Revision Notes
1	2015.08.18	Issued for Review
2	2015.09.16	Issued for Construction



This drawing must not be scaled. The contractors shall verify all dimensions and other data on site prior to commencement of work. Discrepancies, errors, and omissions are to be reported to the Architect prior to proceeding with the Work.
Drawings and specifications as instruments of service are the property of the Architect; the copyright in the same being reserved to him.
No reproduction or revision to these drawings may be made without the permission of the Architect, and when made, must bear his name. All prints to be returned to the Architect upon request.