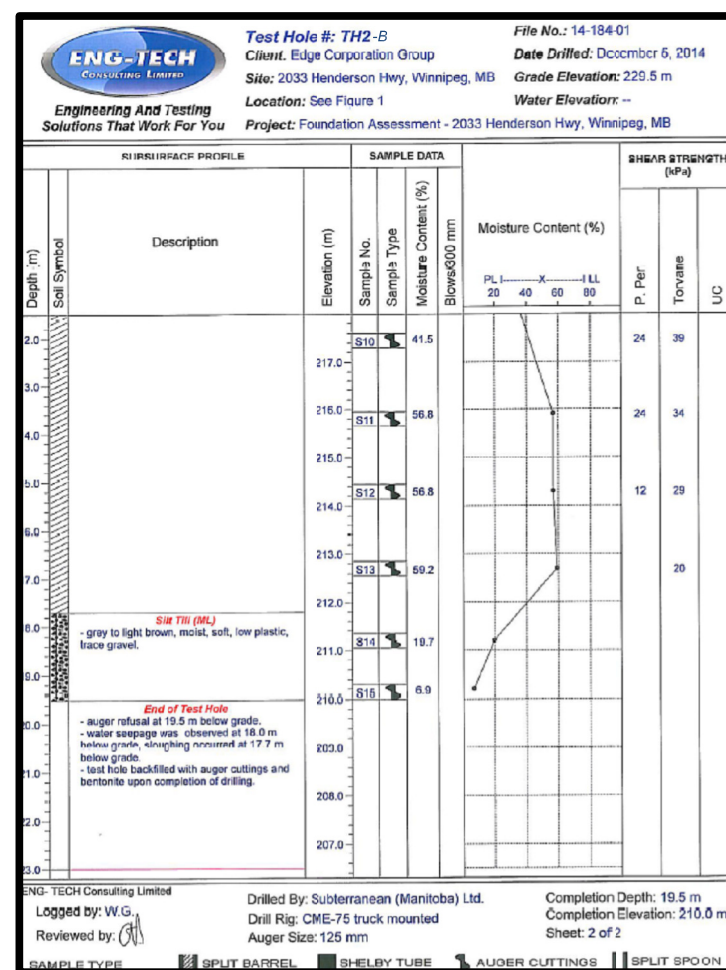
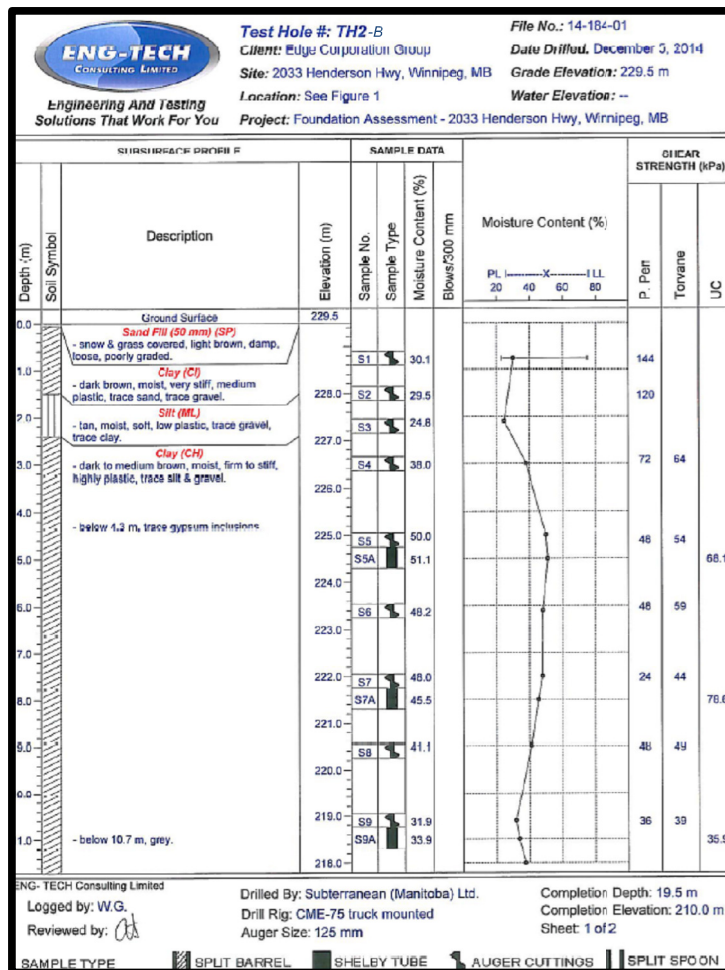
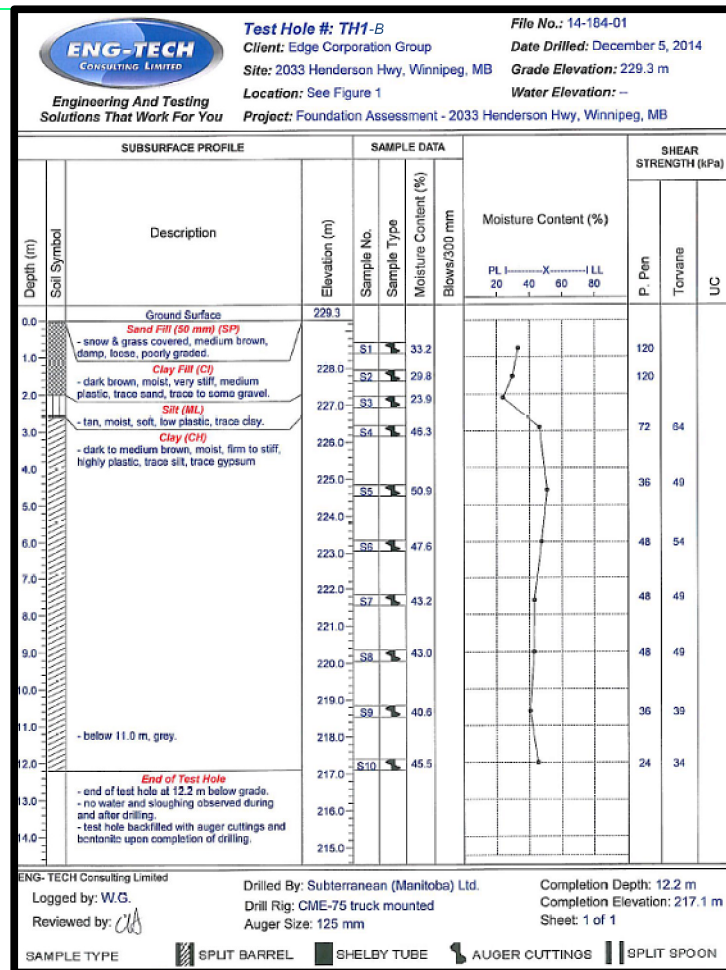
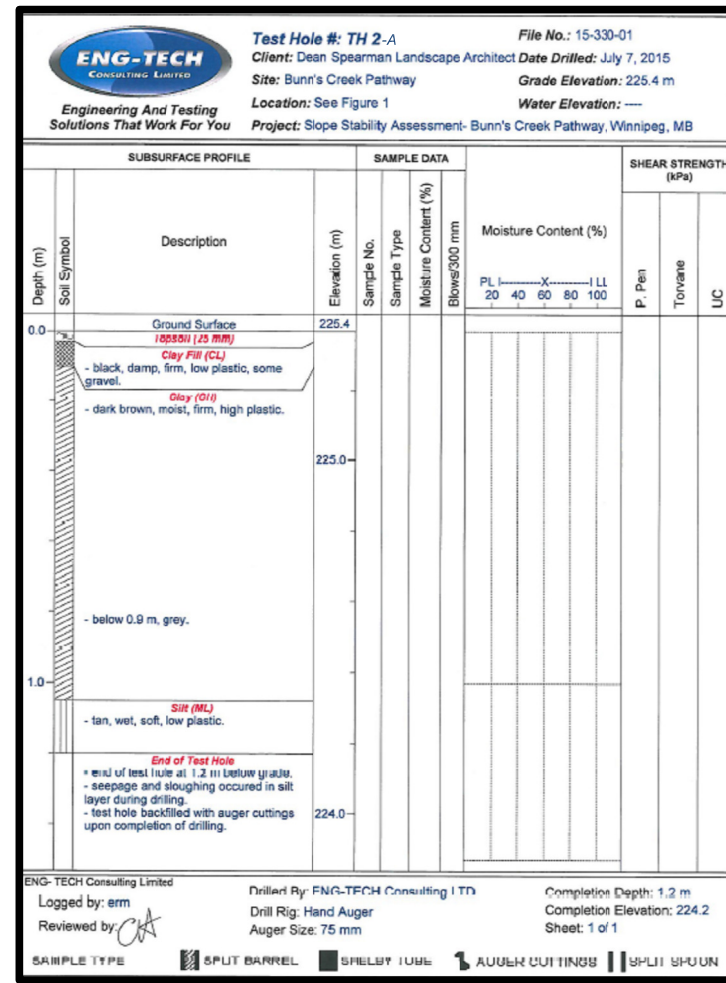
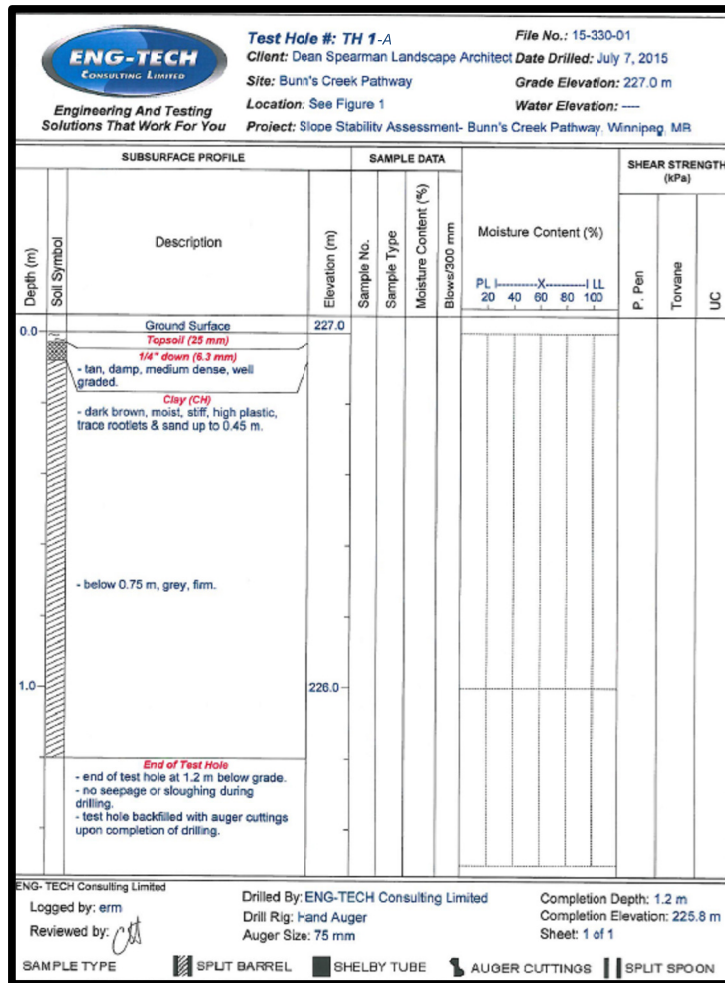


MODIFIED UNIFIED CLASSIFICATION SYSTEM FOR SOILS			
MAJOR DIVISION	GROUP SYMBOL	TYPICAL DESCRIPTION	LABORATORY CLASSIFICATION CRITERIA
GRAVELS (MORE THAN 50% GRAVEL) SMALLER THAN 4.75 mm	GW	WELL GRADED GRAVELS, GRAVEL-SAND MIXTURES, LITTLE OR NO FINES	$D_{60} > 4.75$; $D_{30} > 0.425$; $D_{15} > 0.075$; $P_{200} < 5$
	GP	POORLY GRADED GRAVELS, GRAVEL-SAND MIXTURES, LITTLE OR NO FINES	NOT MEETING ABOVE REQUIREMENTS
	GM	SILTY GRAVELS, GRAVEL-SAND OR SILT MIXTURES	ATTENDING LIMITS BELOW 1" LINE AND P.L. LESS THAN 4
	GC	CLAYEY GRAVELS, GRAVEL-SAND-CLAY MIXTURES	ATTENDING LIMITS ABOVE 1" LINE AND P.L. LESS THAN 4
SANDS (MORE THAN 50% SAND) SMALLER THAN 4.75 mm	SW	WELL GRADED SANDS, GRAVELLY SANDS, LITTLE OR NO FINES	$D_{60} > 0.425$; $D_{30} > 0.075$; $D_{15} > 0.075$; $P_{200} < 5$
	SP	POORLY GRADED SANDS, GRAVELLY SANDS, LITTLE OR NO FINES	NOT MEETING ABOVE REQUIREMENTS
	SM	SILTY SANDS, SAND-SILT MIXTURES	ATTENDING LIMITS BELOW 1" LINE OR P.L. LESS THAN 4
	SC	CLAYEY SANDS, SAND-CLAY MIXTURES	ATTENDING LIMITS ABOVE 1" LINE AND P.L. MORE THAN 7
FINE GRAINED SOILS (MORE THAN 50% FINE) SMALLER THAN 4.75 mm	ML	LOW PLASTICITY SILTS AND VERY FINE SANDS, ROCK FLOUR, SILTY SANDS OF SLIGHTLY PLASTICITY	CLASSIFICATION IS BASED UPON PLASTICITY CHART (SEE BELOW)
	MH	MODERATELY PLASTIC SILTS AND VERY FINE SANDS, ROCK FLOUR, SILTY SANDS OF SLIGHTLY PLASTICITY	
	CL	LOW PLASTICITY CLAYS OF LOW PLASTICITY, GRAPPELY, SANDY OR SILTY CLAYS, LEAM CLAYS	
	CI	MODERATELY PLASTIC CLAYS OF LOW PLASTICITY, GRAPPELY, SANDY OR SILTY CLAYS, LEAM CLAYS	
	CH	HIGH PLASTICITY CLAYS OF HIGH PLASTICITY, FAT CLAYS	
	OH	ORGANIC SILTS AND ORGANIC SILTY CLAYS OF LOW PLASTICITY	
HIGHLY ORGANIC SOILS	OL	ORGANIC CLAYS OF HIGH PLASTICITY, FAT CLAYS	
	OH	ORGANIC CLAYS OF HIGH PLASTICITY	
ADDITIONAL SYMBOLS			STRENGTH COLOUR OR COLOUR AND OTHER REQUISITE TEXTURE
PLASTIC SOILS			
MOISTURE PLASTICITY INTERMEDIATE CONSISTENCY PLASTICITY			
SOIL DESCRIPTIONS			
DEFINITIONS			



NOTES

- THE LETTER AFTER THE TEST HOLE NUMBER SIGNIFIES THE TEST HOLE GROUP FOR THOSE DRILLED FROM THE DIFFERENT DRILLING JOBS.

No.	DATE	ISSUE /REVISION
0	Aug 2015	Report/ Tender

6 - 854 Marion Street
 Winnipeg, MB R2J 0K4
 Phone: (204) 233-1694
 Fax: (204) 235-1579

Certificate of Authorization
 ENG-TECH Consulting Limited
 No.2475 Expiry: April 30, 2016

CLIENT:
 DEAN SPEARMAN LANDSCAPE ARCHITECT

PROJECT:
 SLOPE STABILITY ASSESSMENT AND EROSION PROTECTION, BUNN'S CREEK PATHWAY, WINNIPEG, MB

DWG DESCRIPTION:
 SOIL CLASSIFICATION SHEET AND TEST HOLE LOGS (TH1-A, TH2-A, TH1-B AND TH2-B)

SCALE:
 N/A

DRAWN BY:
 ERM

DATE:
 AUGUST 2015

FILE NO.:
 CLIENT DWG/FIG. No.:
 15-330-01

ENG-TECH DWG/FIG. No.:
 G8