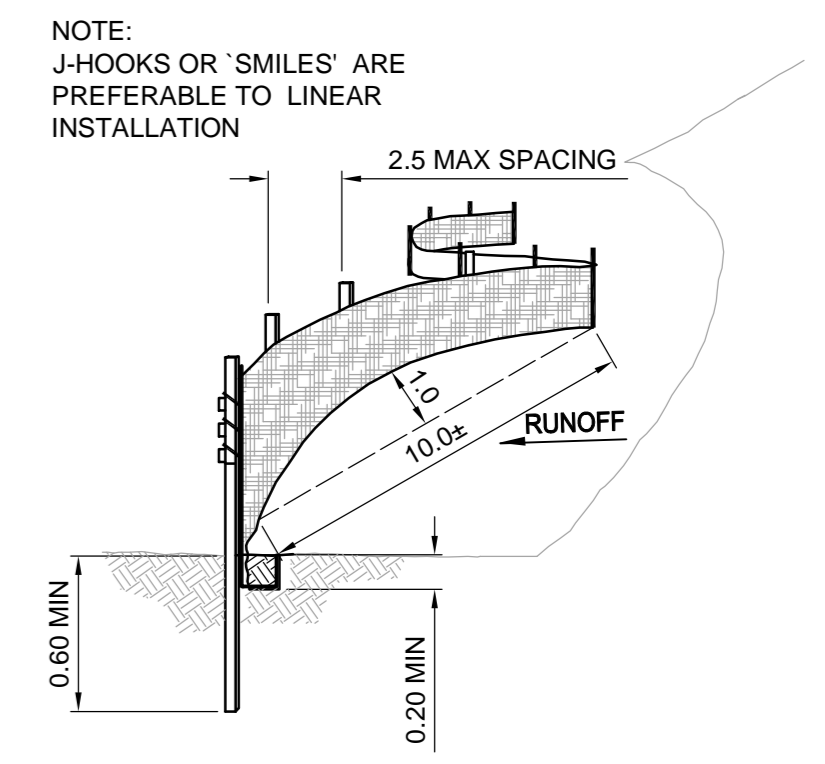


1  
- -  
TYPICAL SILT FENCE DETAIL  
1:25

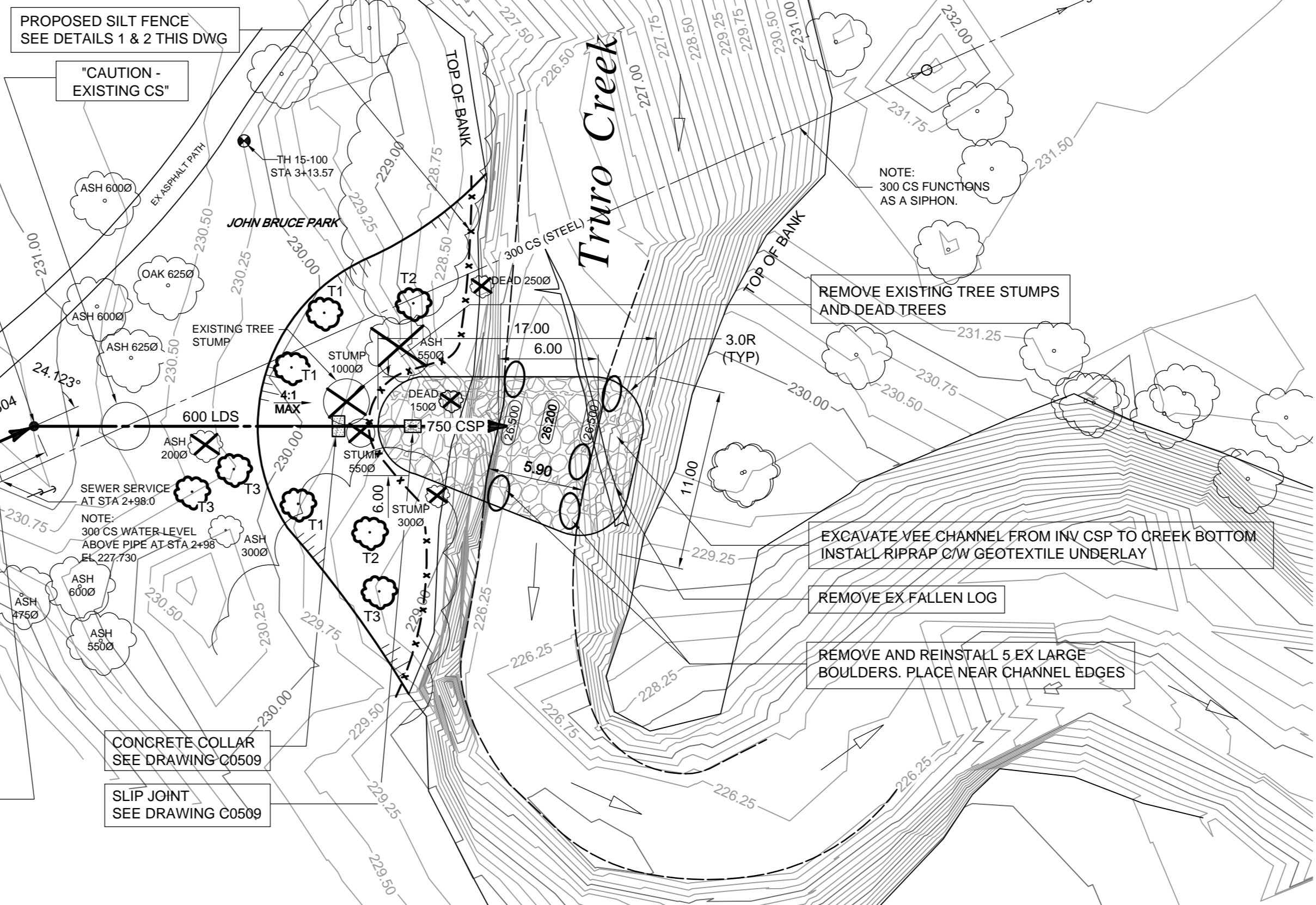


2  
- -  
TYPICAL FENCING PLACEMENT  
NTS

REVEGETATION NOTES:

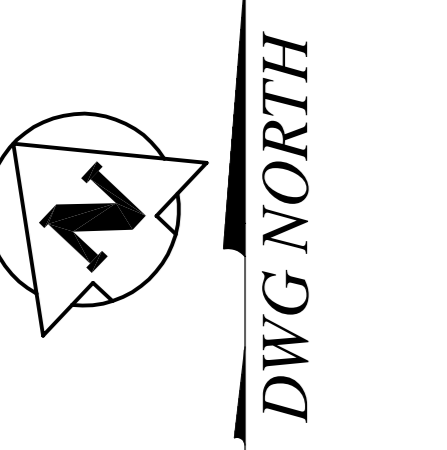
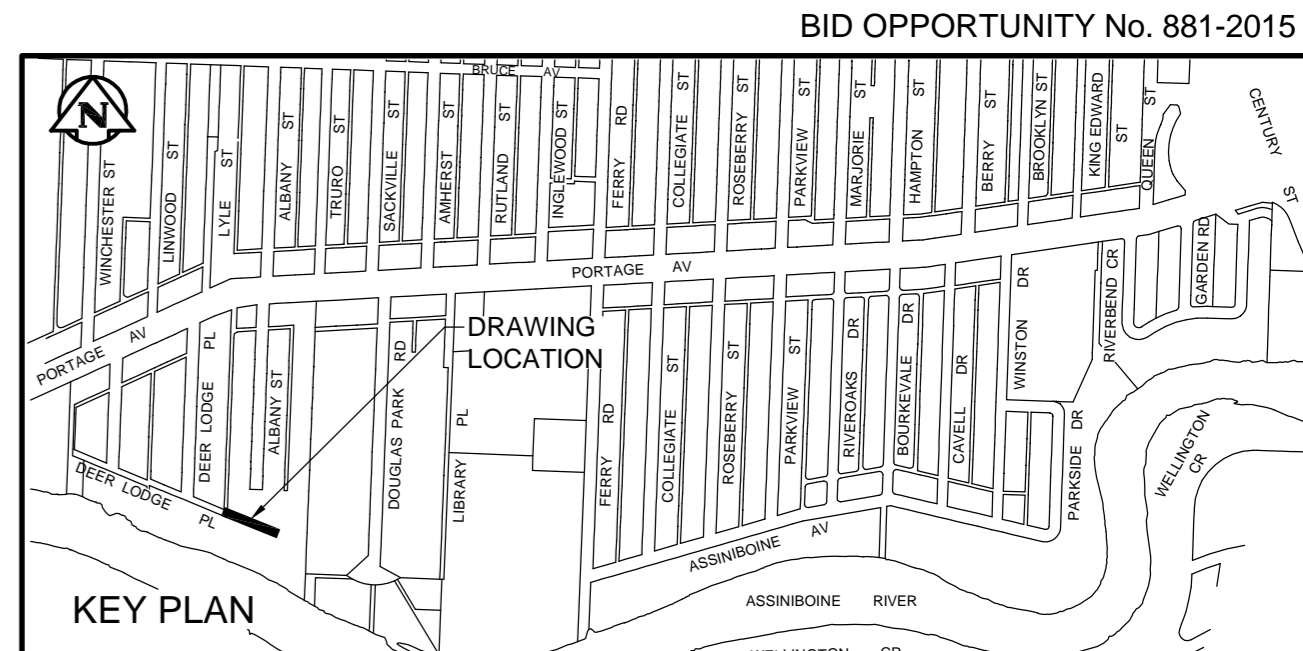
TREE PLANTING		
TREE NAME	QUANTITY	
T1 MANITOBA MAPLE 60 - 70 CAL	3	
T2 PLAINS COTTONWOOD 60 - 70 CAL	2	
T3 AMERICAN BASSWOOD 60 - 70 CAL	3	

- REVEGETATE OUTFALL AREA BELOW TOP OF 4:1 SLOPE WITH NATIVE GRASS SEEDING.
- REVEGETATE PARK AREA ABOVE TOP OF 4:1 SLOPE WITH PARK AND BOULEVARD SEED MIX.



- CONSTRUCTION NOTES:
- LOCATION OF ALL SEWER AND WATER LINES TO BE CONFIRMED IN THE FIELD.
  - SEWER AND WATER SERVICES SHOWN ON DRAWINGS ARE APPROXIMATE ONLY.
  - INSTALL NEW SEWER AND CATCHBASIN LEADS BY TRENCHLESS METHODS, UNLESS NOTED OTHERWISE.
  - INSTALL TYPE 'B' RISERS ON CATCHBASIN LEADS AS DIRECTED BY THE CONSULTANT.

- GENERAL NOTES:
- CHAINAGE IS ALONG CENTRE LINE OF PROPOSED OUTFALL.
  - STATION 1+00 = WEST LIMIT OF DEER LODGE PLACE WEST LEG AND NORTH LIMIT OF DEER LODGE PLACE SOUTH LEG.
  - SEE SPECIFICATIONS FOR DETAILED TEST HOLE INFORMATION.



**APEGM**  
Certificate of Authorization  
TETRA TECH WEI Inc.  
No. 5313 Date: April 30, 2016

**WARNING**  
IF POWER EQUIPMENT OR EXPLOSIVES ARE TO BE USED FOR EXCAVATION ON THIS PROJECT THE CONTRACTOR MUST:  
1. NOTIFY THE GAS COMPANY OF THE PROPOSED LOCATION OF EXCAVATION.  
2. TAKE PRECAUTION TO AVOID DAMAGE TO GAS COMPANY INSTALLATIONS. SEE PROVINCIAL REGULATION 140/92 FOR DETAILS.

EXISTING	LEGEND-PLAN	PROPOSED	EXISTING	LEGEND-PLAN	PROPOSED	EXISTING	LEGEND-PLAN	PROPOSED
150 WM	WATERMAIN	150 WM	BEND	ANCHOR	ANCHOR	15.240	LEGAL DIMENSION	
400 FM	FEEDERMAIN	400 FM	TEE	TREE	TREE		SURVEY BAR	
300 LDS	LAND DRAINAGE SEWER	300 LDS	CURB STOP	TRAFFIC SIGNAL	TRAFFIC SIGNAL		GAS	
250 WWS	WASTEWATER SEWER	250 WWS	PLUG	HYDRO	HYDRO		MTS	
300 CS	COMBINED SEWER	300 CS	MANHOLE	SIDEWALK	SIDEWALK		CURB	
200 FCM	FORCEMAIN	200 FCM	CATCHBASIN					
	JUNCTIONS		CURB INLET					
	HYDRANT		ADDRESS					
	VALVE		HYDRO POLE					
	REDUCER		LIGHT STANDARD					

LOCATION APPROVED UNDERGROUND STRUCTURES  
SUPV. U/G STRUCTURES COMMITTEE DATE  
NOTE: LOCATION OF UNDERGROUND STRUCTURES AS SHOWN ARE BASED ON THE BEST INFORMATION AVAILABLE. BUT NO GUARANTEE IS GIVEN THAT ALL EXISTING UTILITIES ARE SHOWN OR THAT THE GIVEN LOCATIONS ARE EXACT. CONFIRMATION OF EXISTENCE AND EXACT LOCATION OF ALL SERVICES MUST BE OBTAINED FROM THE INDIVIDUAL UTILITIES BEFORE PROCEEDING WITH CONSTRUCTION.

B.M. CITY OF WINNIPEG 38-069  
ELEV. 233.792m

NO.	REVISIONS	DATE	BY
02	ISSUED FOR ADDENDUM No. 1	2015.10.28	KJM
01	ISSUED FOR TENDER	2015.10.19	KJM
00	ISSUED FOR APPROVAL	2015.10.19	KJM

**TETRA TECH**

DESIGNED BY	KJM	CHECKED BY	KJM
DRAWN BY	NL	APPROVED BY	GS
HOR. SCALE:	1:250	RELEASED FOR CONSTRUCTION	
VERTICAL:	1:50		
DATE	2015.02.25	DATE	

ORIGINAL DRAWING REVISION "00" SEALED BY  
K.J. McRAE  
2015-10-19  
CONSULTANT DRAWING NO.  
1000120300-DWG-C0159

**THE CITY OF WINNIPEG**  
WATER AND WASTE DEPARTMENT

FERRY ROAD AND RIVERBEND COMBINED SEWER RELIEF WORKS  
CONTRACT 5 WEST  
TRURO'S CREEK OUTFALL  
PUBLIC LANE TO TRURO CREEK

CITY DRAWING NUMBER  
LD-7510  
SHEET 8 OF 10  
C0508