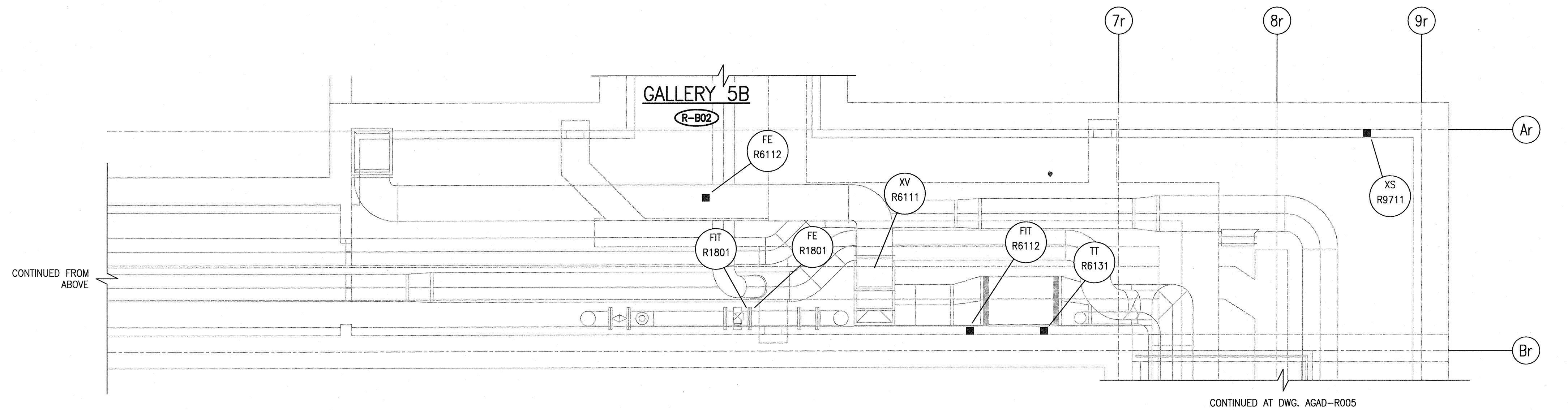
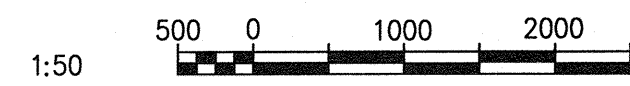


SPECIFIC NOTES:

- ① SEE DWG. ADTL-R003 DETAIL A FOR INSTALLATION DETAILS.
- ② RUN WIRES IN CONDUIT FOR DEVICE FROM FERMENTERS ELECTRICAL ROOM IN AREA D.



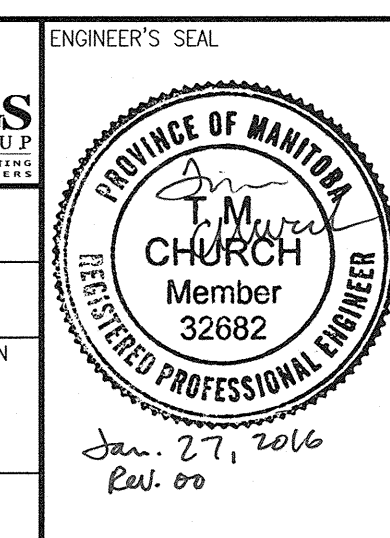
SUMP PUMP ROOM & GALLERY 5B LAYOUT
1 : 50



| | | | |
|-----------------|------------|-----------------------------|------------|
| DESIGNED BY: | M. WANG | CHECKED BY: | T. CHURCH |
| DRAWN BY: | M. WANG | APPROVED BY: | T. CHURCH |
| SCALE: | 1:50 | ISSUED FOR CONSTRUCTION BY: | T. TURZAK |
| DATE: | 2015/11/27 | DATE: | 2016/01/29 |
| CONSULTANT NO.: | 474248 | | |

CH2MHILL
SNC-LAVALIN

KGS
G.R.O. D.F.
CONSULTANTS



THE CITY OF WINNIPEG
WATER AND WASTE DEPARTMENT

SOUTH END WATER POLLUTION CONTROL CENTRE
SEWPPC UPGRADING/EXPANSION PROJECT
AUTOMATION - INSTRUMENT LOCATION PLAN
BIOREACTORS/BLOWER BUILDING
SUMP PUMP ROOM AND GALLERY 5B LAYOUT

CITY DRAWING NUMBER: 1-0102-AGAD-R004
SHEET: 001
REV: 00
SIZE: A1

| REFERENCE DRAWINGS | DESCRIPTION |
|--------------------|-------------|
| | |