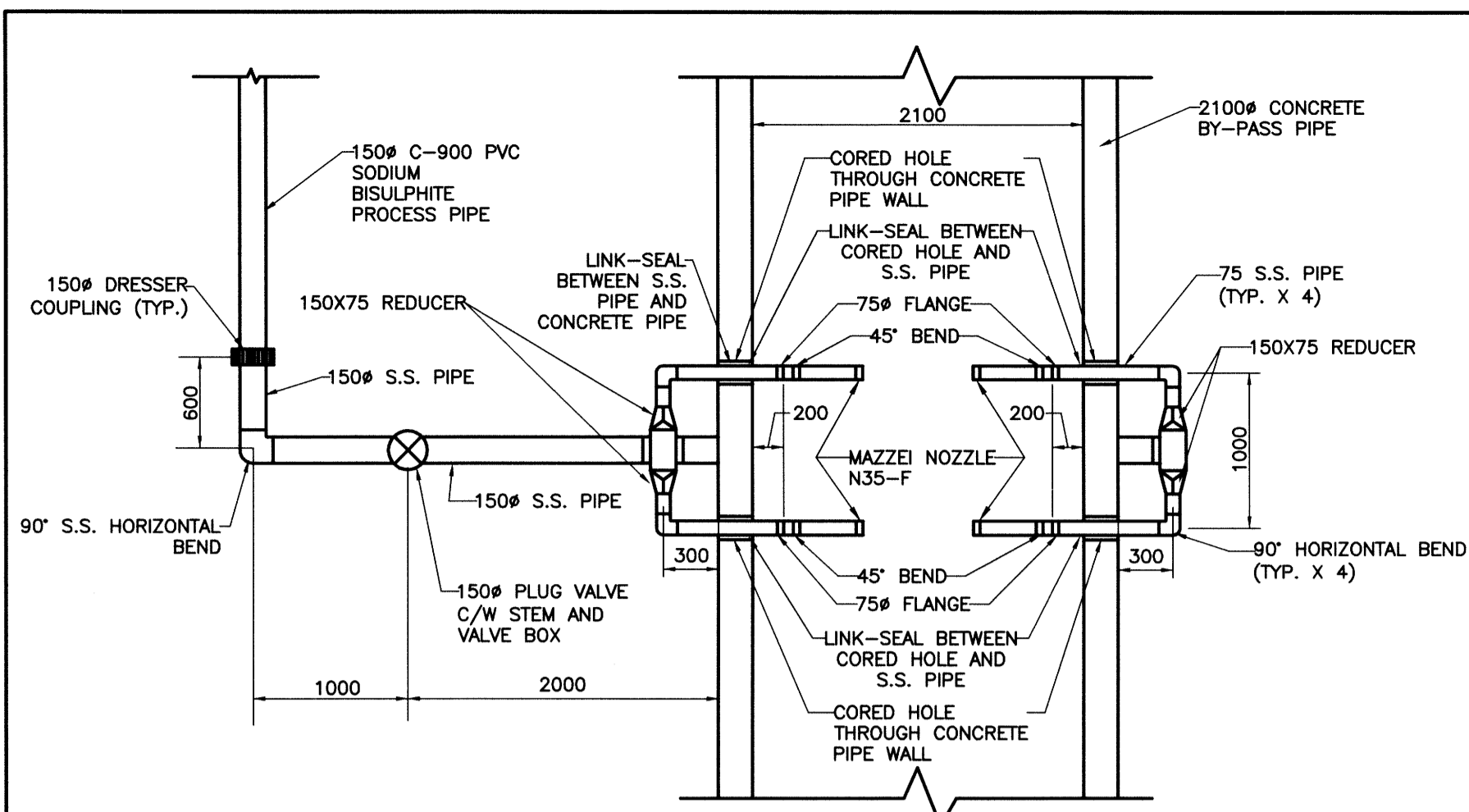
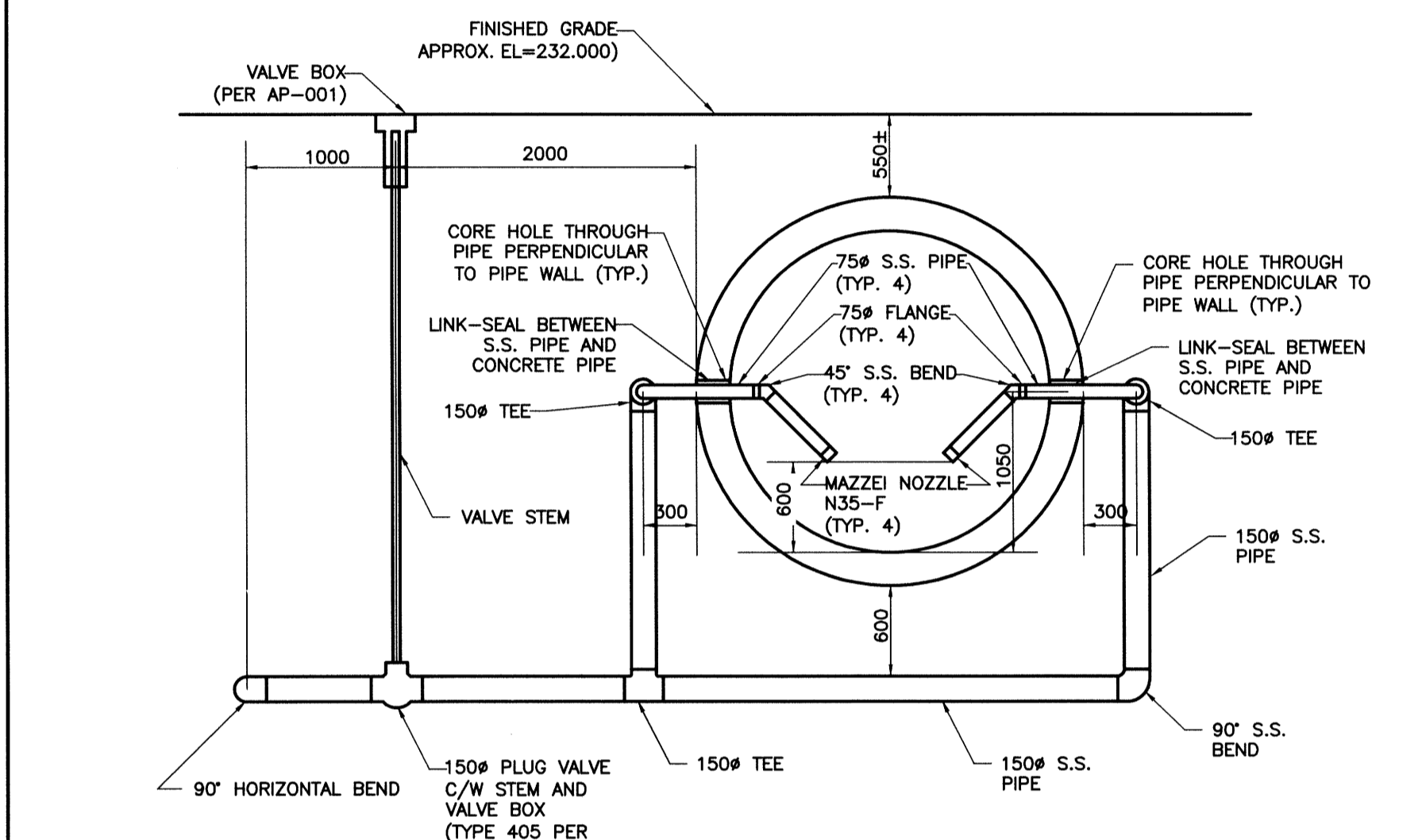


A1 SIZE - 594mm x 841mm



SODIUM BISULPHITE CONNECTION DETAIL - PLAN VIEW

SCALE: NTS

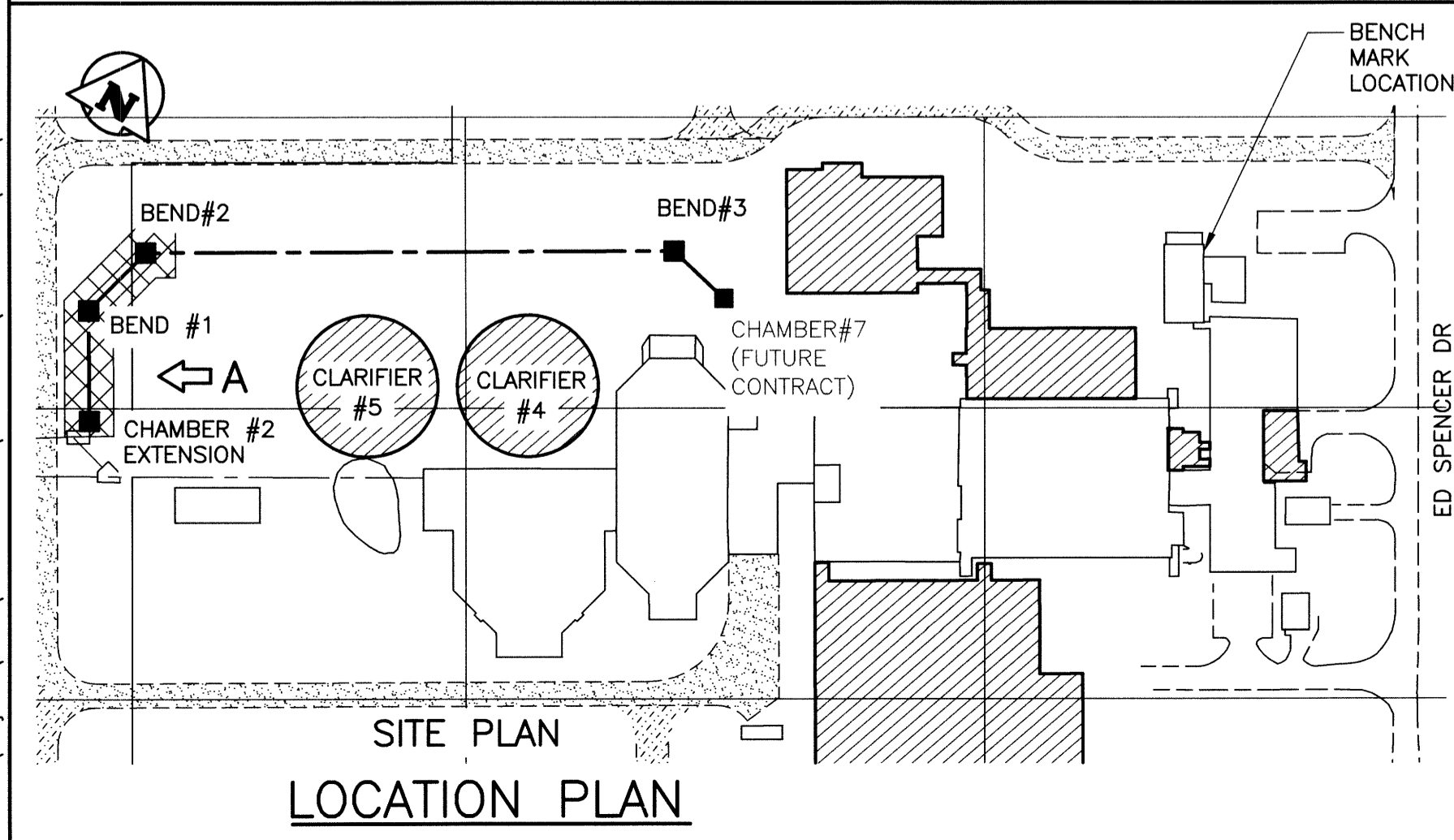


SODIUM BISULPHITE CONNECTION DETAIL - X-SECTION

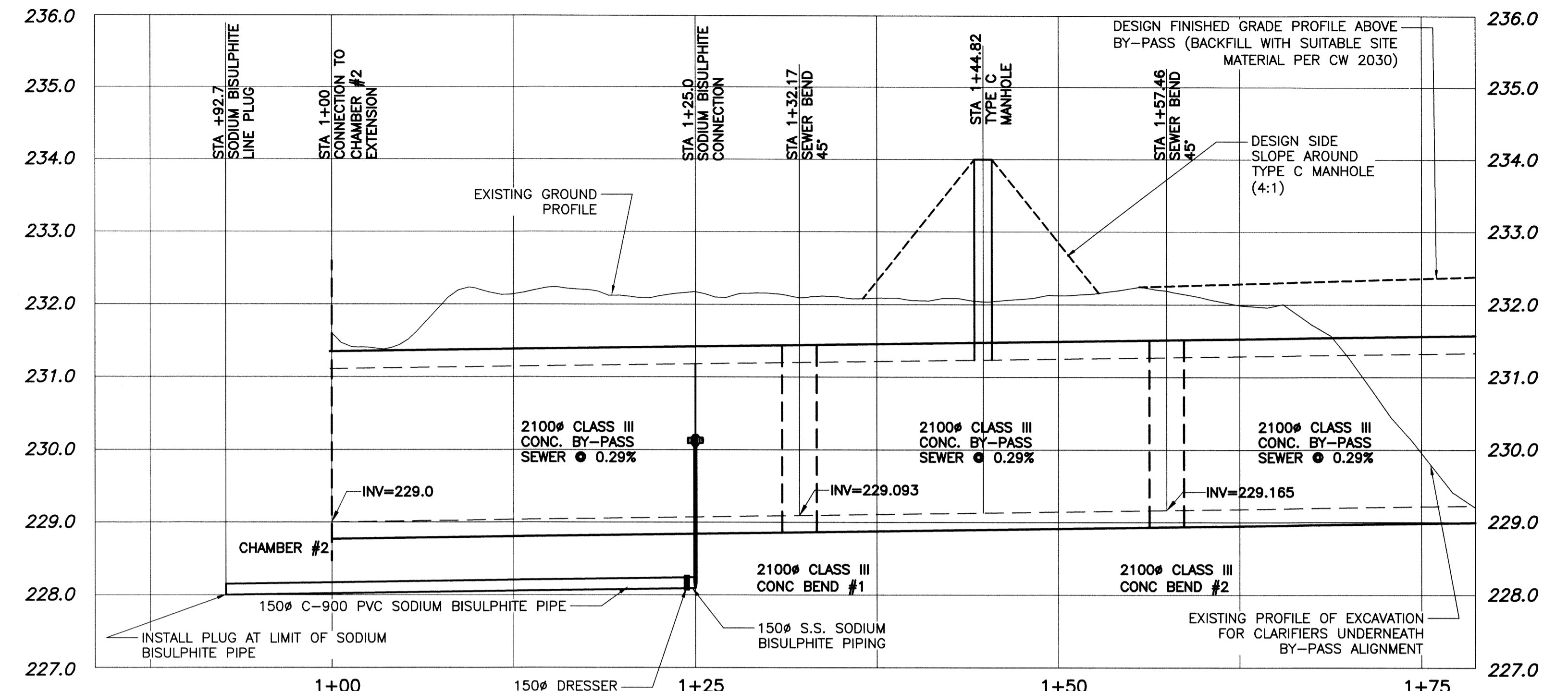
SCALE: NTS

SODIUM BISULPHITE CONNECTION DETAIL NOTES:

1. CEMENT STABILIZED FILL TO BE PLACED AROUND SEGMENT OF PROCESS PIPING UNDERNEATH BY-PASS.
2. THRUST BLOCKS SHALL BE INSTALLED AT ALL BENDS AND FITTINGS PER C.O.W. STANDARD CONSTRUCTION SPECIFICATIONS.
3. ALL STAINLESS STEEL PIPES AND FITTINGS SHOWN ABOVE DETAILS SHALL BE SCHEDULE 10 - 316L STAINLESS STEEL. PER SPECIFICATION SECTION 40 27 00.08 PRESSURE TEST TO 300kPa FOR MINIMUM 2 HOURS. STAINLESS STEEL PIPING SEGMENTS FROM OUTSIDE WALL OF 2100mm CONC PIPING FROM LINK SEAL TO NOZZLE SHALL BE SCHEDULE 80.
4. ALL PVC PIPES TO BE AWWA C900 PVC IN ACCORDANCE WITH AT-4.1.1.10 OF THE APPROVED PRODUCTS FOR UNDERGROUND USE IN THE CITY OF WINNIPEG.
5. STAINLESS STEEL PIPES SHALL BE WRAPPED WITH DENSO PASTE AND DENSO TAPE AS RECOMMENDED BY PIPE MANUFACTURER.
6. REFER TO SPECIFICATION, "40 27 00 - PROCESS PIPING" FOR ADDITIONAL DETAILS ON PIPE, VALVES AND FITTINGS SPECIFICATIONS.
7. MAZZEI NOZZLE IN POLYPROPYLENE AS MANUFACTURED BY MAZZEI INJECTOR COMPANY (www.mazzei.net).

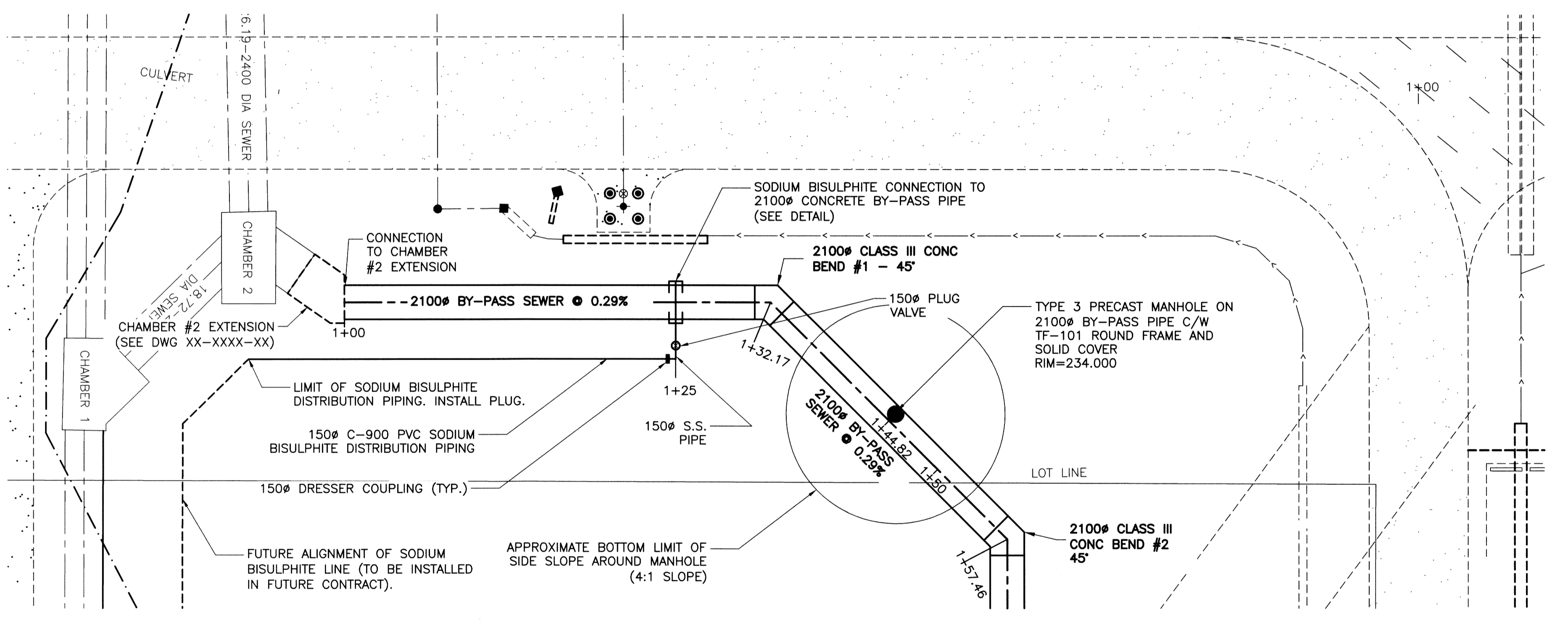


LOCATION PLAN



PROFILE VIEW-A

SCALE: HOR 1:250
VERT 1:50



PLAN VIEW-A

SCALE: 1:250

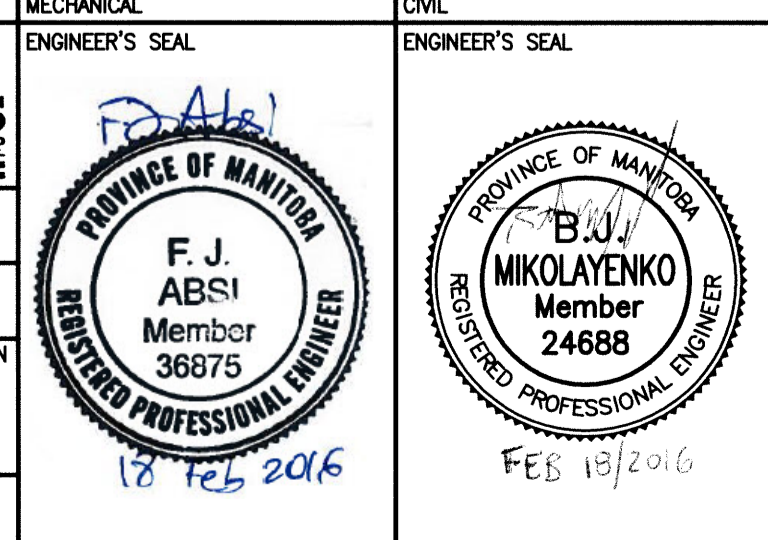
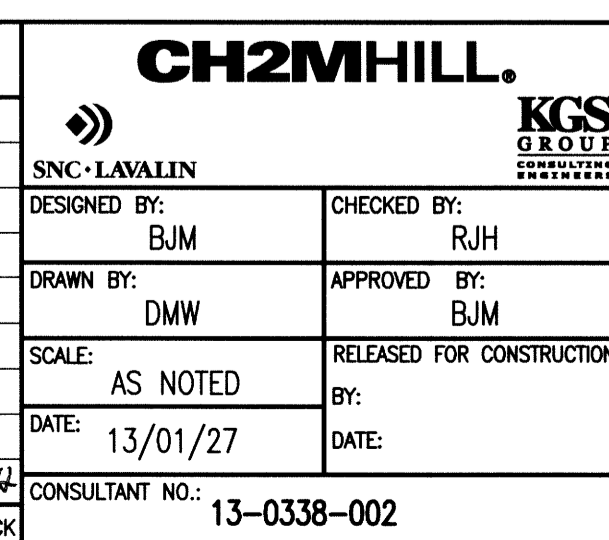
SCALE: 1:250m (A1)
1:500m (A3)

NOTES

1. ALL WORK SHALL BE PERFORMED IN ACCORDANCE WITH THE LATEST REVISION OF THE CITY OF WINNIPEG STANDARD CONSTRUCTION SPECIFICATIONS.
2. SEE CHAMBER #2 EXTENSION DRAWING 1-0102-CUTY-Y003-001 FOR CONNECTION DETAILS
3. BY-PASS PIPE, BENDS AND TYPE C MANHOLES SHALL BE CLASS III PRE-CAST CONCRETE. CONTRACTOR SHALL PROVIDE SHOP DRAWINGS FOR APPROVAL PRIOR TO WORK.
4. SODIUM BISULPHITE PIPING SHALL BE BACKFILLED PER CITY OF WINNIPEG STANDARD CONSTRUCTION SPECIFICATIONS.
5. MECHANICAL ENGINEER'S SEAL APPLICABLE TO DESIGN OF BISULPHITE PIPING SHOWN ON INSET DETAILS.
6. CIVIL ENGINEER'S SEAL APPLICABLE TO DESIGN OF BY-PASS PIPING SHOWN ON DRAWING.

PROPOSED BY-PASS SEWER LAYOUT CO-ORDINATES			
STATION	EASTING (X)	NORTHING (Y)	REMARKS
1+00	636689.774	5517418.899	BY-PASS SEWER TIE-IN
1+32.17	636674.056	5517446.973	BY-PASS SEWER BEND
1+57.46	636680.923	5517471.313	BY-PASS SEWER BEND

B.M. BRASS PLATE LOCATED IN GRADE BEAM OF ADMINSTRATON BUILDING ELEV. 234.059	
CH2MHILL.	
SNC-LAVALIN	KGS
DESIGNED BY: BJM	CHECKED BY: RJH
DRAWN BY: DMW	APPROVED BY: BJM
SCALE: AS NOTED	RELEASED FOR CONSTRUCTION
DATE: 13/01/27	BY:
DATE:	DATE:
CONSULTANT NO.: 13-0338-002	
00	ISSUED FOR ADD.1 - B.O. 899-2015 02/2016 BJM
NO. REVISIONS	DATE DESIGN CHECK



THE CITY OF WINNIPEG
WATER AND WASTE DEPARTMENT

SOUTH END WATER POLLUTION CONTROL CENTRE
SEWPPC UPGRADE/EXPANSION PROJECT
CIVIL
SEWER BY-PASS PIPE
STA 1+57.46 TO STA 3+16

CITY DRAWING NUMBER: 1-0102-CUTY-Y001
SHEET: 001
REV: 00
SIZE: A1

LAST SAVE: 2016/02/18 - 9:33am
PATH: P:\Projects\2013\13-0338-002\Doc\Control\Tables\DWG\1-0102-CUTY-Y001-001-Rev_00.dwg