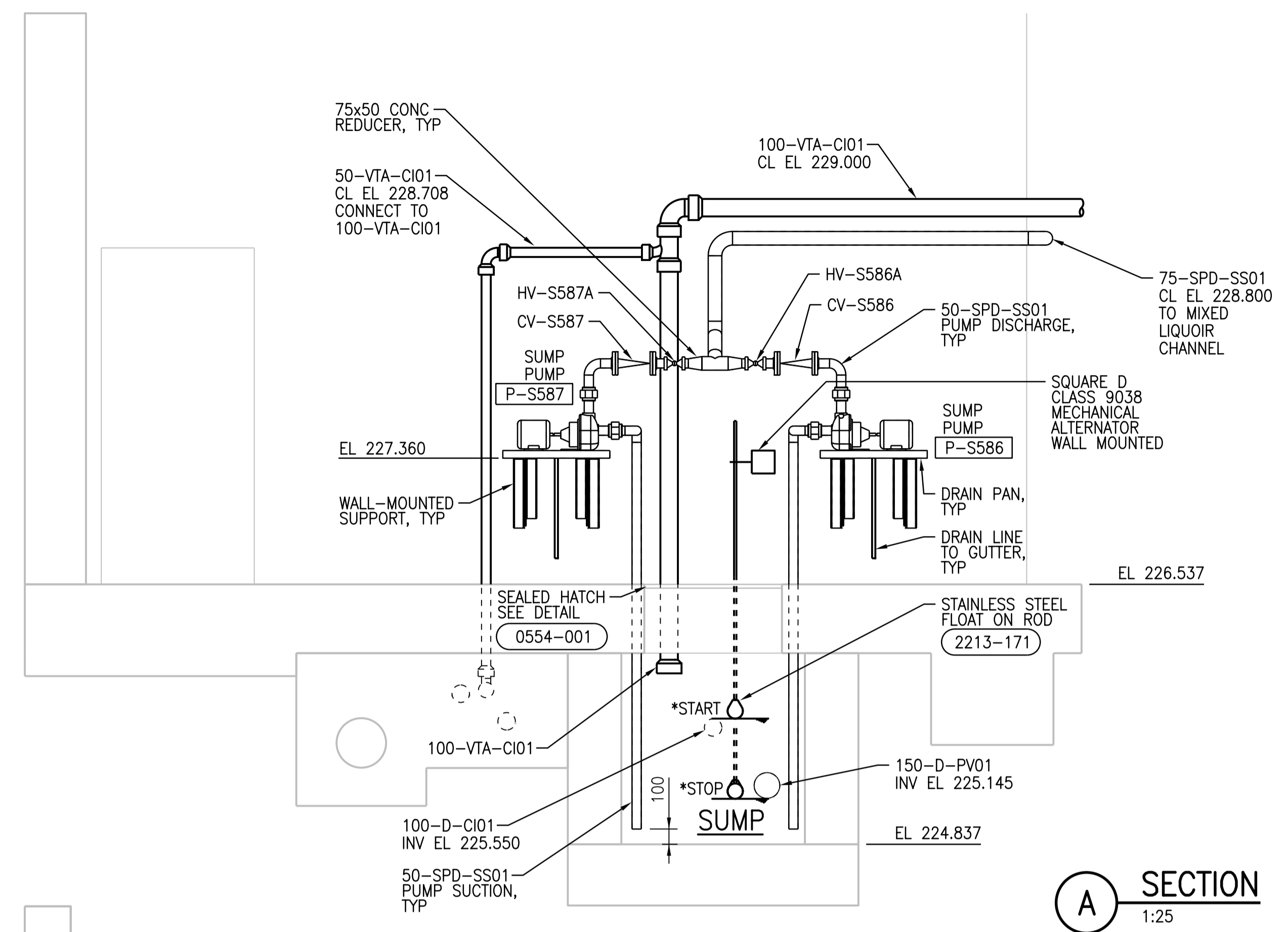


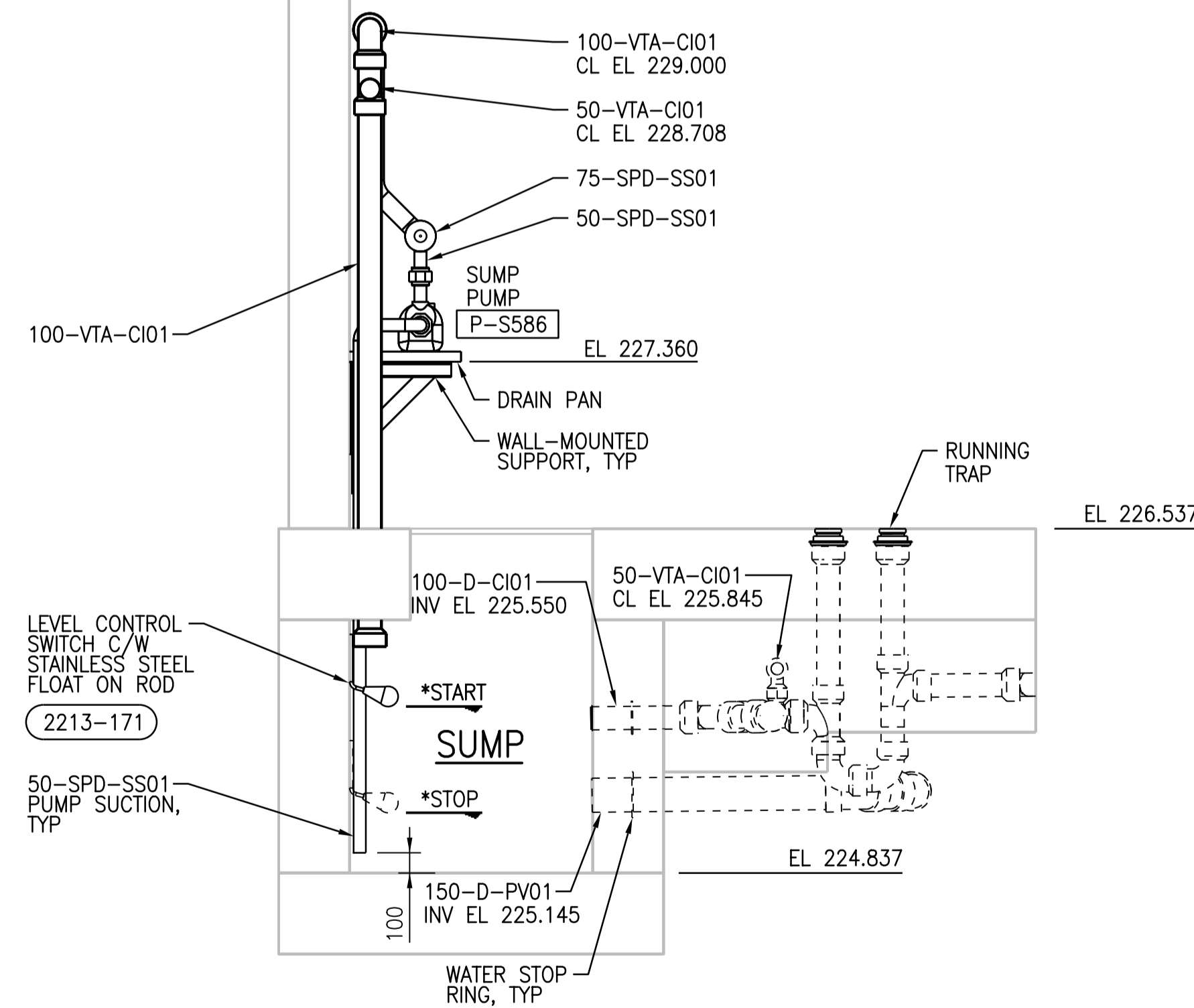
**SUMP PUMP PLAN**  
1:25  
SIMILAR DETAIL FOR SUMP PUMPS  
P-S584 | P-S585 | P-S588 | P-S589

\*H.L. ALARM - XXX  
\*BOTH PUMP STARTS - XXX  
\*ONE PUMP STARTS - XXX  
\*STOP - XXX

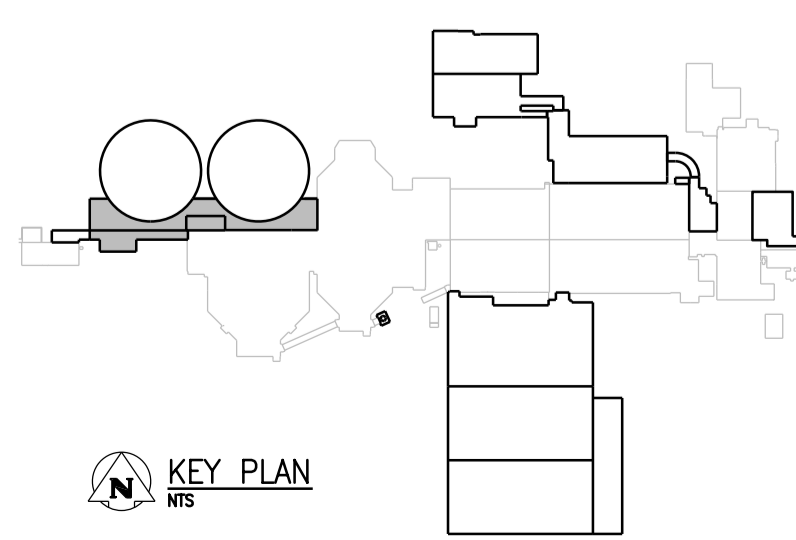
NOTE:  
1. PLEASE REFER TO DETAIL A ON DWG. ADTL-A005 FOR ADDITIONAL INSTRUMENTATION DETAILS



**A SECTION**  
1:25



**B SECTION**  
1:25



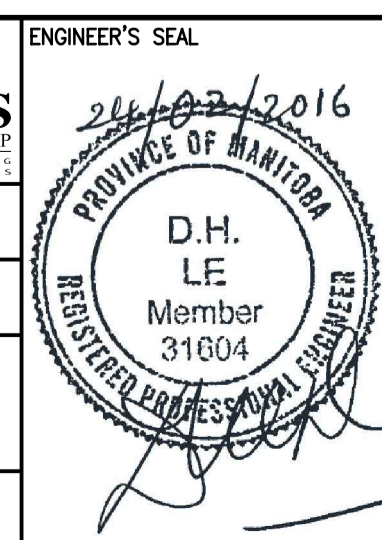
NO.	REVISIONS	DATE	DESIGN	CHECK
00	ISSUED FOR ADD. 2 - B.O.899-2015	02/2016	P.K.	T.T.

**CH2MHILL**  
SNC-LAVALIN

DESIGNED BY: T. TRAN  
DRAWN BY: P. KWONG  
SCALE: 1:25  
DATE: 2016/02/12

CHECKED BY: D. LE  
APPROVED BY: H.T. FREIHAMMER  
ISSUED FOR CONSTRUCTION BY: T. TURZAK  
DATE: 2016/01/29

CONSULTANT NO.: 474248



**THE CITY OF WINNIPEG**  
WATER AND WASTE DEPARTMENT

SOUTH END WATER POLLUTION CONTROL CENTRE  
SEWPC UPGRADING/EXPANSION PROJECT  
PLUMBING  
SECONDARY CLARIFIERS 4 AND 5  
PLUMBING - TYPICAL SUMP PUMP DETAIL LAYOUT

CITY DRAWING NUMBER: 1-0102-MGAD-S508  
SHEET: 001  
REV: 00  
SIZE: A1