

NOTES:

- REFER TO DUCT SCHEDULE FOR MATERIAL.
- REFER TO ARCHITECTURAL STANDARD DETAILS FOR GAS PIPE SUPPORT ON ROOF AND GAS PIPE THROUGH ROOF.
- REFER TO ARCHITECTURAL STANDARD DETAILS FOR VENT THROUGH ROOF.

150-EA
(FUME EXHAUST)
TYP OF 4

TK-S150
SECONDARY
CLARIFIER 5

INTAKE PENTHOUSE
(SEE ARCHITECTURAL
DRAWINGS FOR DETAILS)

WALKWAY
BRIDGE SECONDARY
CLARIFIER 5

50-NG-CS02
DOWN TO MECHANICAL
ROOM FROM THE ROOF

300-SA BOD 236.05
CONTINUES TO UV
DISINFECTION BUILDING

300-EA BOD 237.9
12-NG-CS02
FROM THE ROOF
ABOVE

WALKWAY A

LOADING
AREA B

STAIR 1

EXHAUST FROM UV
WALKWAY B AND
STORAGE ROOM

200X150
ER-S651-5
59 L/s

NOTE 2
TYP

FD-S650-2

FD-S651-1

300-EA
CONNECTING
TO 450-EA
WITH A
LATERAL
ELBOW

150-OA
150-EA

UH-S659

650X650-SA
FROM BELOW

450X450-EA
FROM BELOW

450-EA
BOD 236.85

150-OA
150-EA

UH-S656

250-SA
BOD 237.05

2331-102
TYP

MGAD-S613

500X500
ER-S651-2
766 L/s

2337-809
TYP

2307-809
TYP

FD-S650-6

2333-808
TYP

300X250
SR-S650-6
218 L/s

250-SA
BOD 235.85

600X350
SR-S650-5
568 L/s

12-NG-CS02
FROM THE ROOF
ABOVE

UH-S656

400-SA
BOD 236.95

500-SA
BOD 236.95

600X350
SR-S650-3
568 L/s

2210-801
TYP

NOTE 3
TYP

2355-425
TYP

400-SA
BOD 237.00

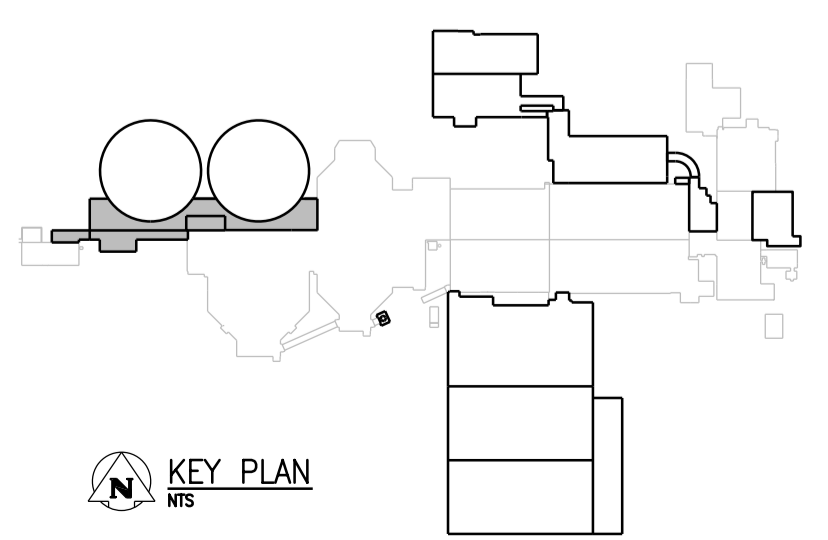
600X350
SR-S650-4
568 L/s

400-SA
BOD 236.05

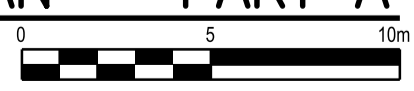
FD-S651-2

300X300
ER-S651-6
236 L/s

MGAD-S611



GROUND FLOOR PLAN - PART A
1:50



APEGM
Certificate of Authorization
CH2M HILL Canada Ltd.
No. 1441

| NO. | REVISIONS | DATE | DESIGN | CHECK |
|-----|-----------------------------------|---------|--------|-------|
| 01 | ISSUED FOR ADD. 2 - B.O.899-2015 | 02/2016 | A.B. | T.T. |
| 00 | ISSUED FOR TENDER - B.O. 899-2015 | 01/2016 | A.B. | T.T. |

| | | | |
|---------------------------|---|--------------------------------|--|
| CH2MHILL | | ENGINEER'S SEAL | |
| SNC-LAVALIN | | KGS GROUP CONSULTING ENGINEERS | |
| DESIGNED BY: D. LE | CHECKED BY: T. TRAN | | |
| DRAWN BY: A. BERSHTEIN | APPROVED BY: H.T. FREIHAMMER | | |
| SCALE: 1:50 | ISSUED FOR CONSTRUCTION BY: T. TURZAK | | |
| DATE: 2016/01/29 | DATE: 2016/01/29 | | |
| CONSULTANT NO.: 474248 | | | |

THE CITY OF WINNIPEG
WATER AND WASTE DEPARTMENT

SOUTH END WATER POLLUTION CONTROL CENTRE
SEWPC UPGRADING/EXPANSION PROJECT
MECHANICAL
SECONDARY CLARIFIERS 4 AND 5
HVAC - GROUND FLOOR PLAN - PART A

CITY DRAWING NUMBER: 1-0102-MGAD-S606
SHEET: 001
REV: 01
SIZE: A1