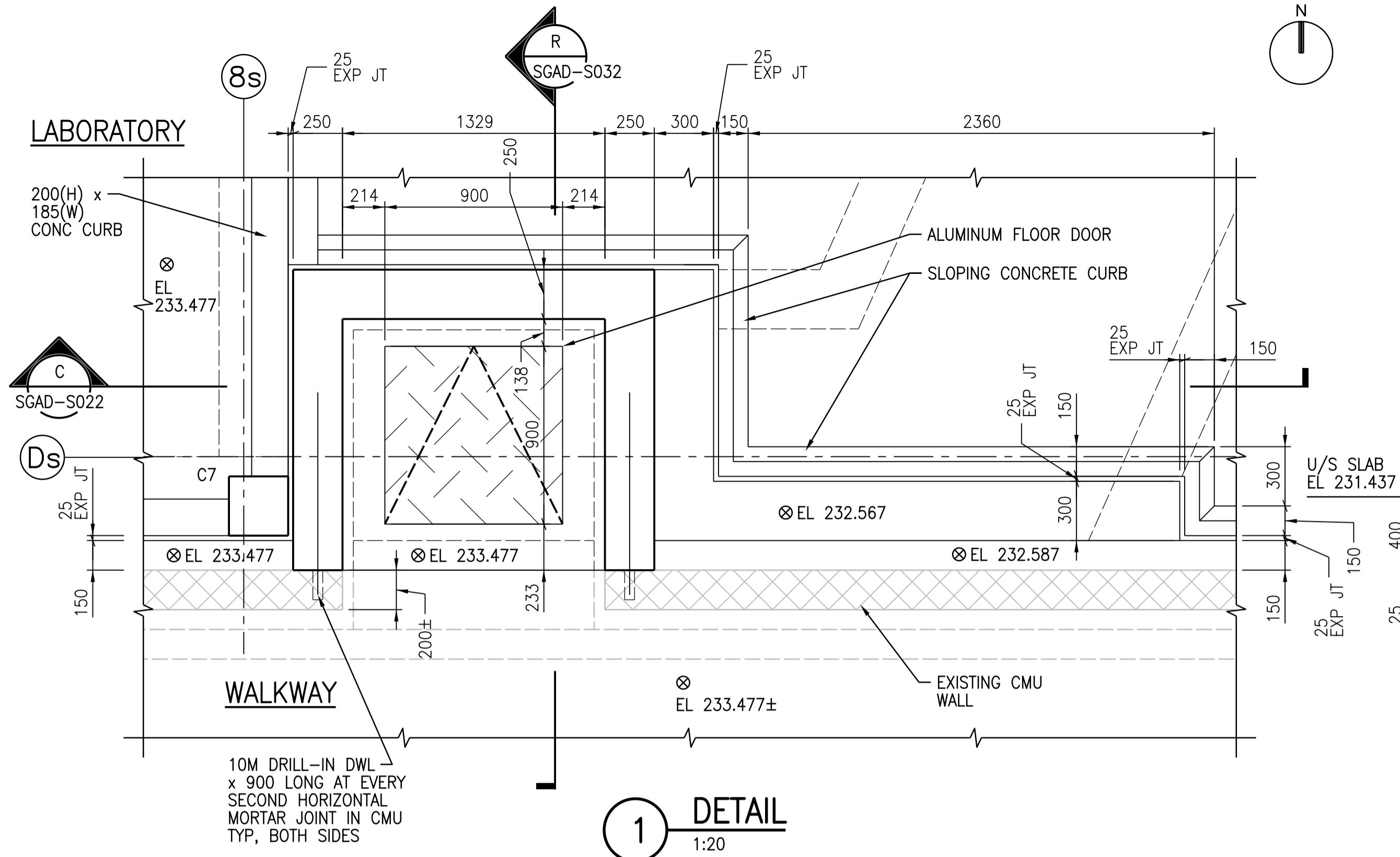
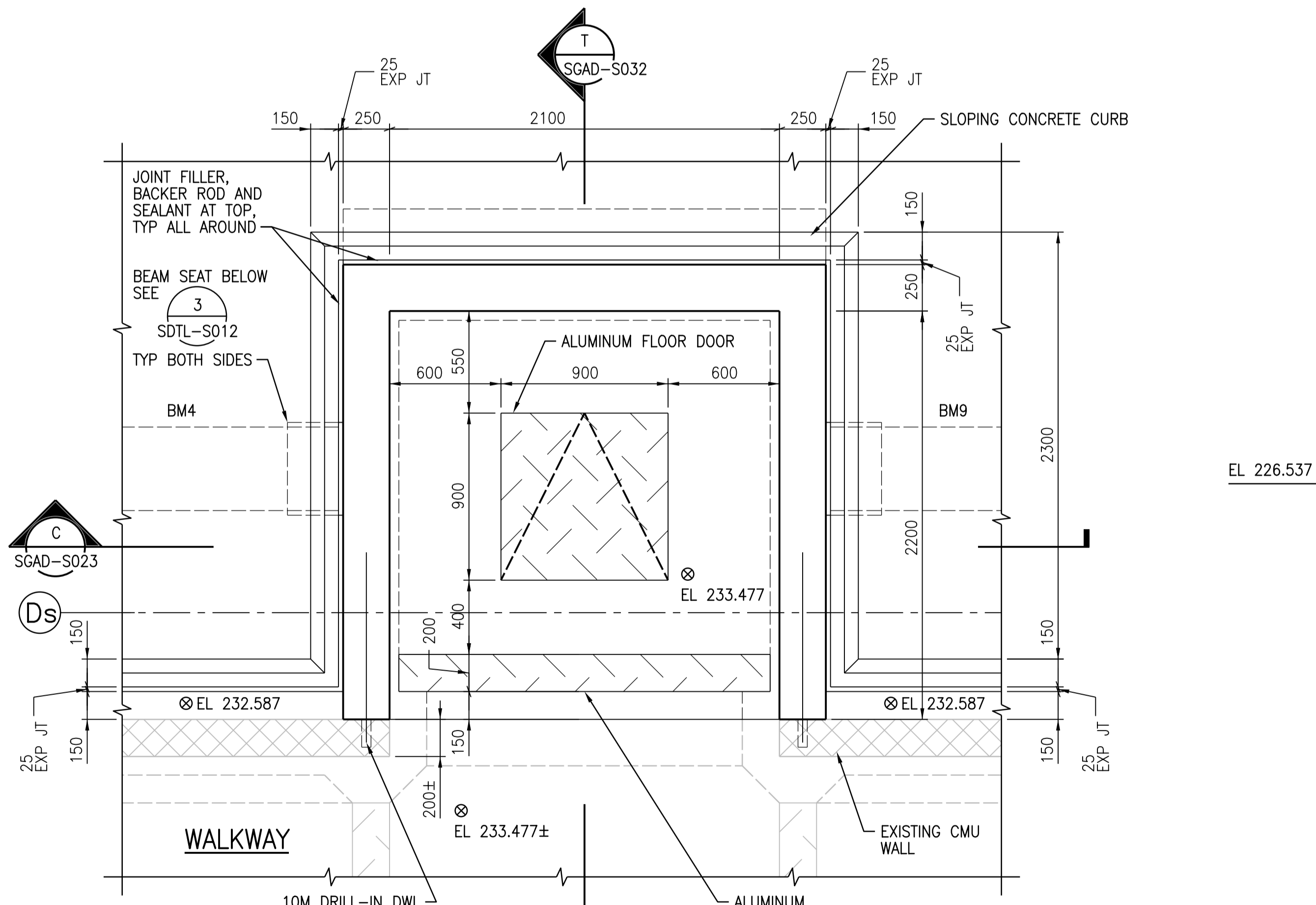


A1 SIZE - 594mm x 841mm

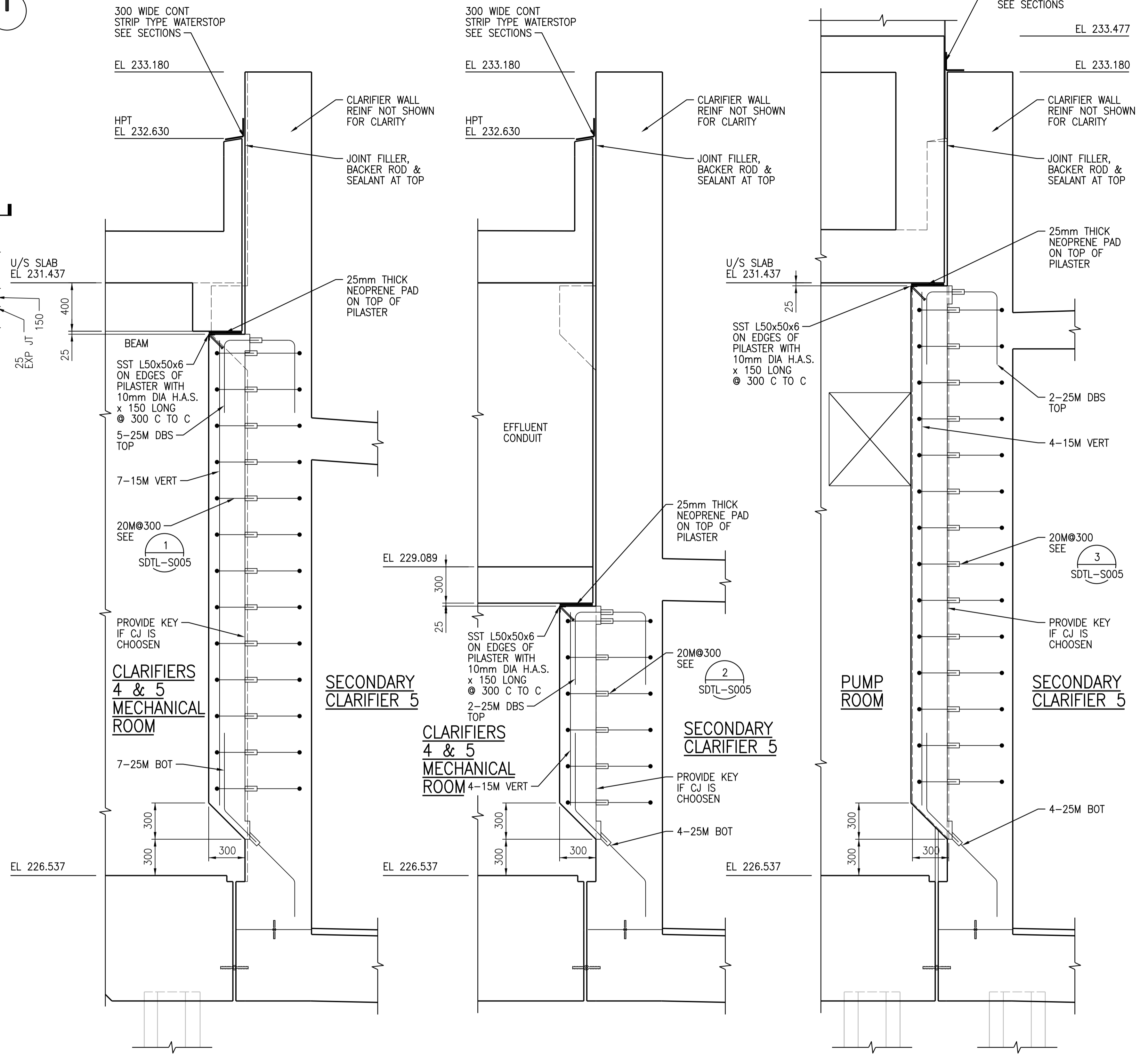
LABORATORY



1 DETAIL
1:20
SGAD-S015



2 DETAIL
1:20
SGAD-S015



3 DETAIL
1:20
SDTL-S005

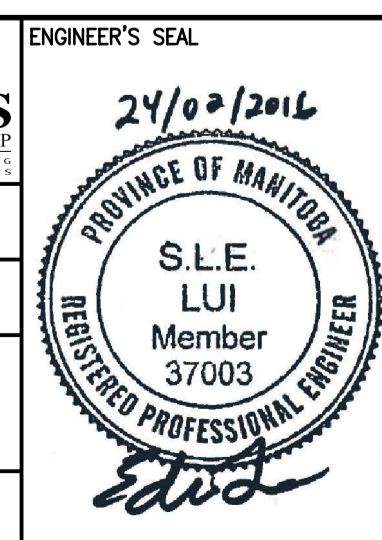
4 DETAIL
1:20
SDTL-S005

5 DETAIL
1:20
SDTL-S005



NO.	REVISIONS	DATE	DESIGN	CHECK
01	ISSUED FOR ADD. 2 - B.O. 899-2015	02/2016	G.O.	J.C.
00	ISSUED FOR TENDER - B.O. 899-2015	01/2016	G.O.	J.C.

CH2MHILL		KCS GROUP	
DESIGNED BY: A THAKKAR	CHECKED BY: R. PARIKH	ENGINEER'S SEAL	
DRAWN BY: G. OMORI	APPROVED BY: H.T. FREIHAMMER	24/02/2016	
SCALE: 1:20	ISSUED FOR CONSTRUCTION BY: T. TURZAK	PROVINCE OF MANITOBA REGISTERED PROFESSIONAL ENGINEER S.L.E. LUI Member 37003	
DATE: 2016/01/29	DATE: 2016/01/29	Edwin	
CONSULTANT NO.: 474248			



THE CITY OF WINNIPEG
Winnipeg WATER AND WASTE DEPARTMENT

SOUTH END WATER POLLUTION CONTROL CENTRE
SEWPC UPGRADING/EXPANSION PROJECT
STRUCTURAL
SECONDARY CLARIFIERS 4 AND 5
DETAILS

CITY DRAWING NUMBER: 1-0102-SDTL-S011
SHEET: 001
REV: 01
SIZE: A1