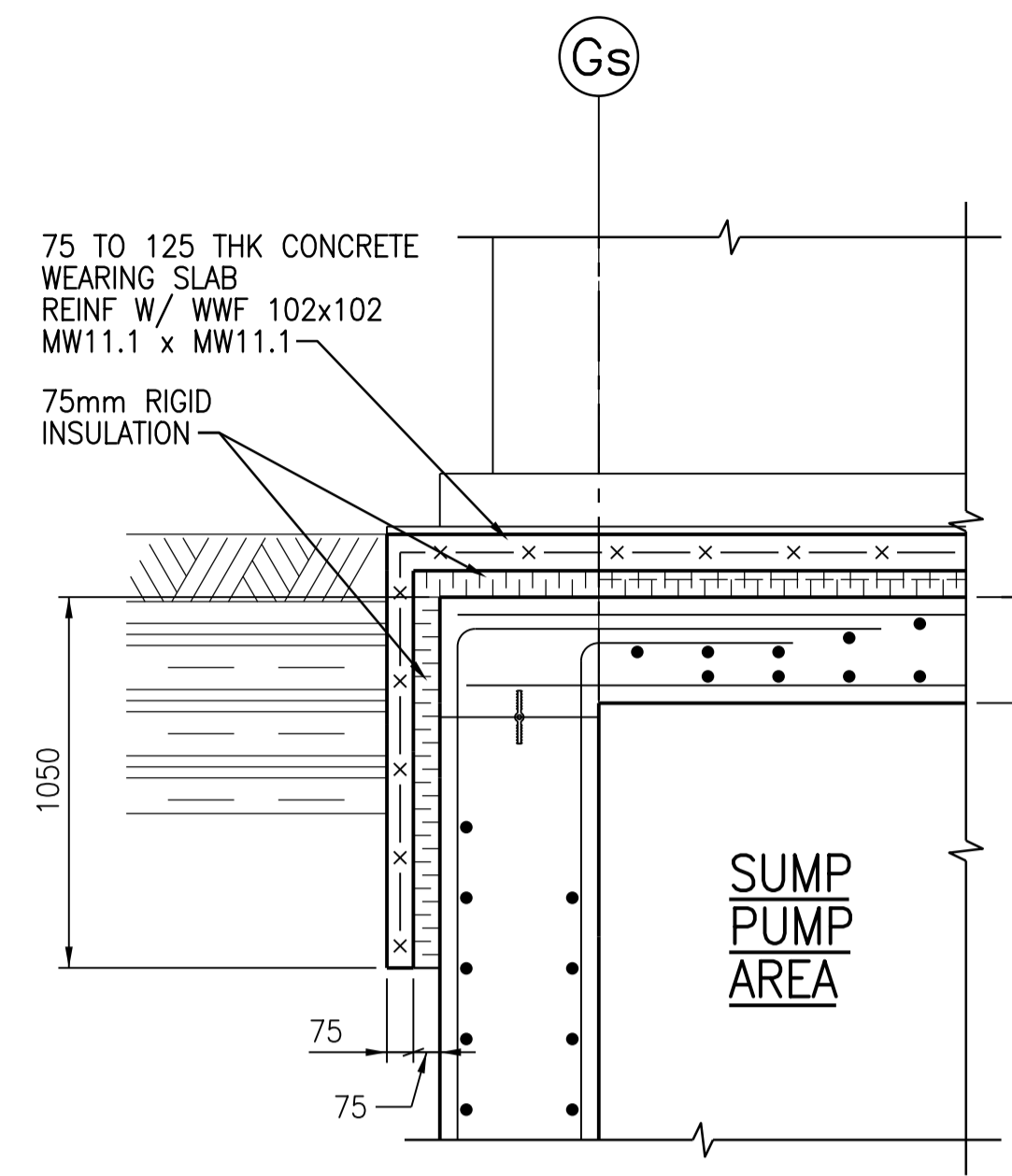
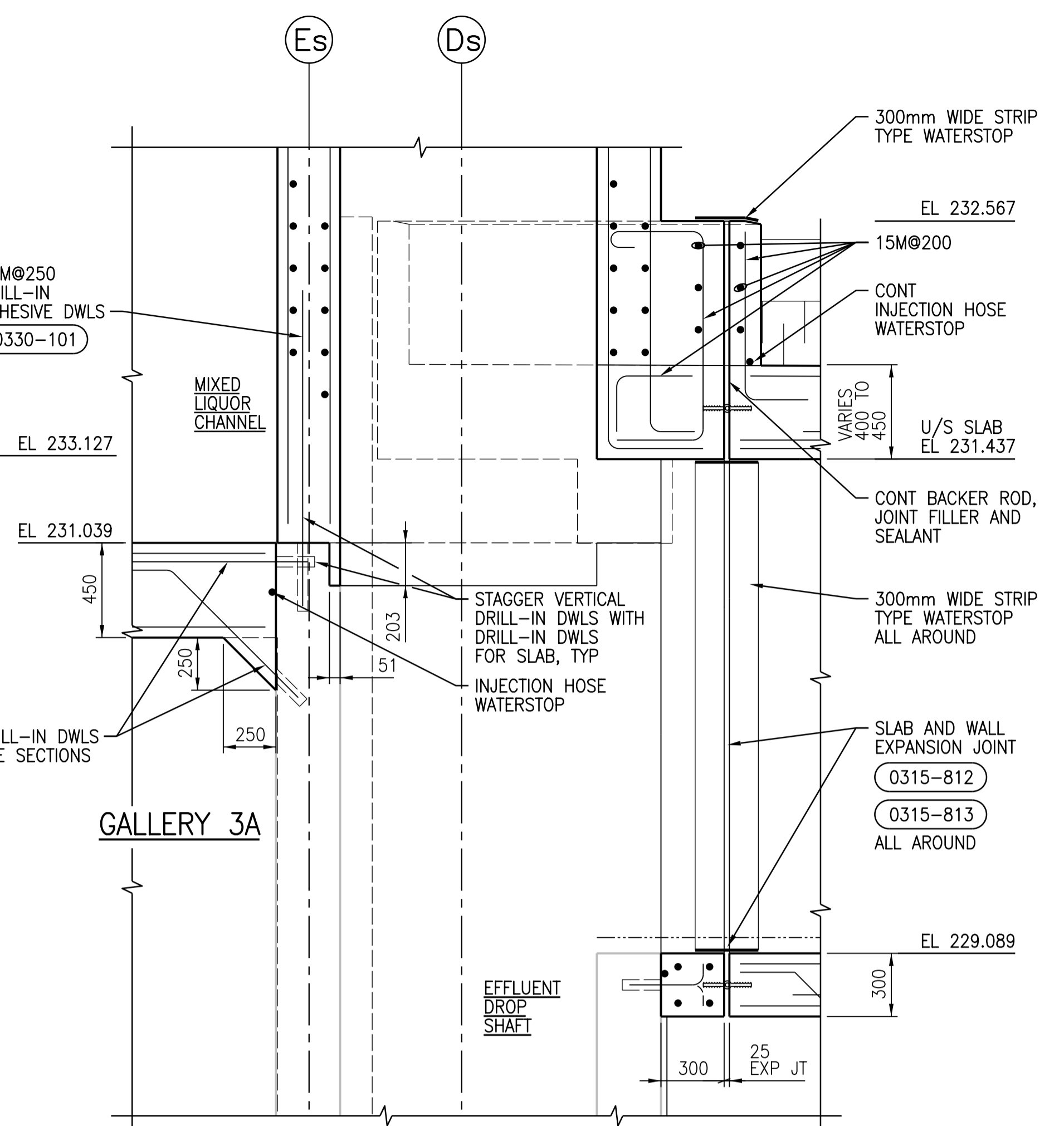


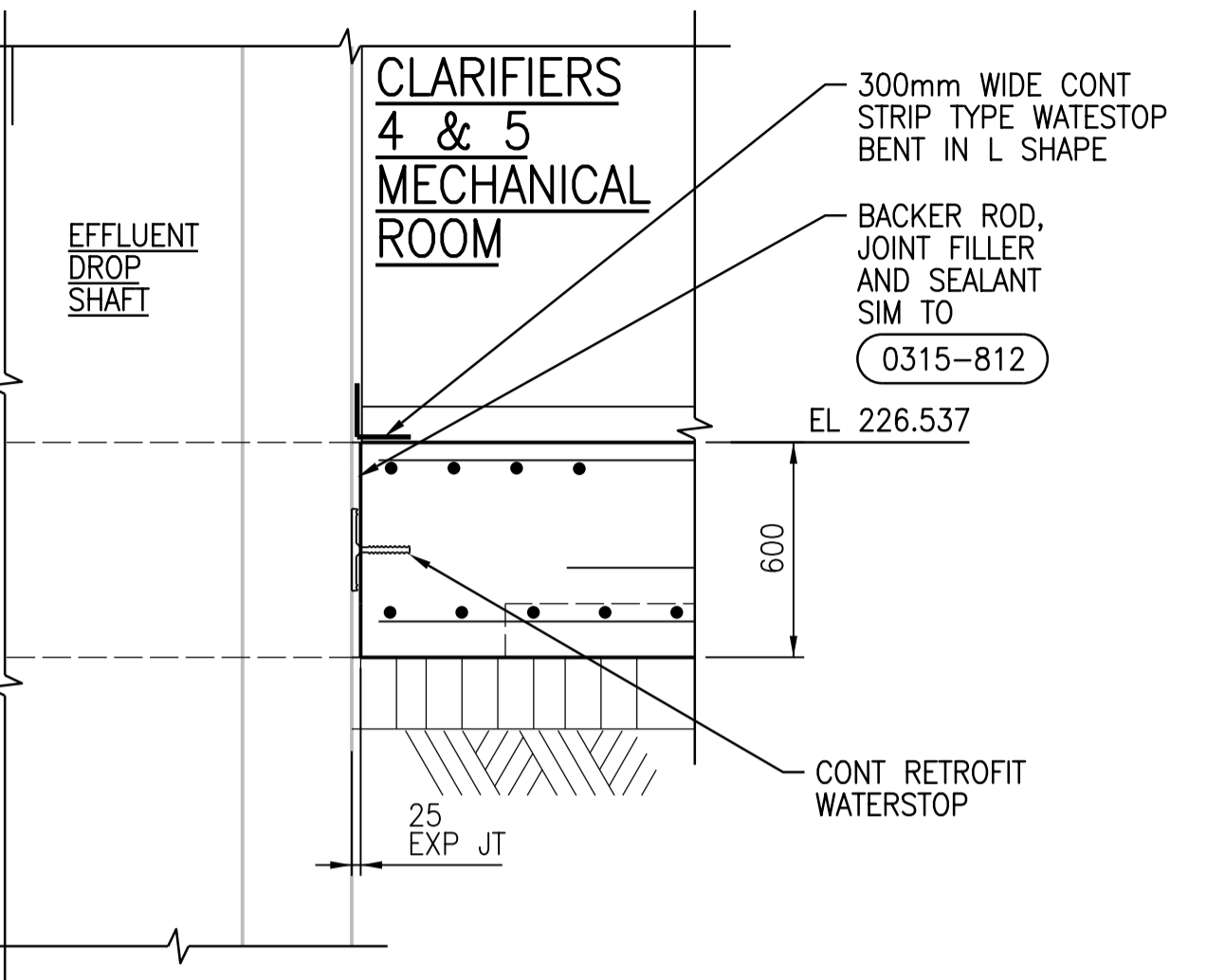
1 DETAIL
1:20
SGAD-S028



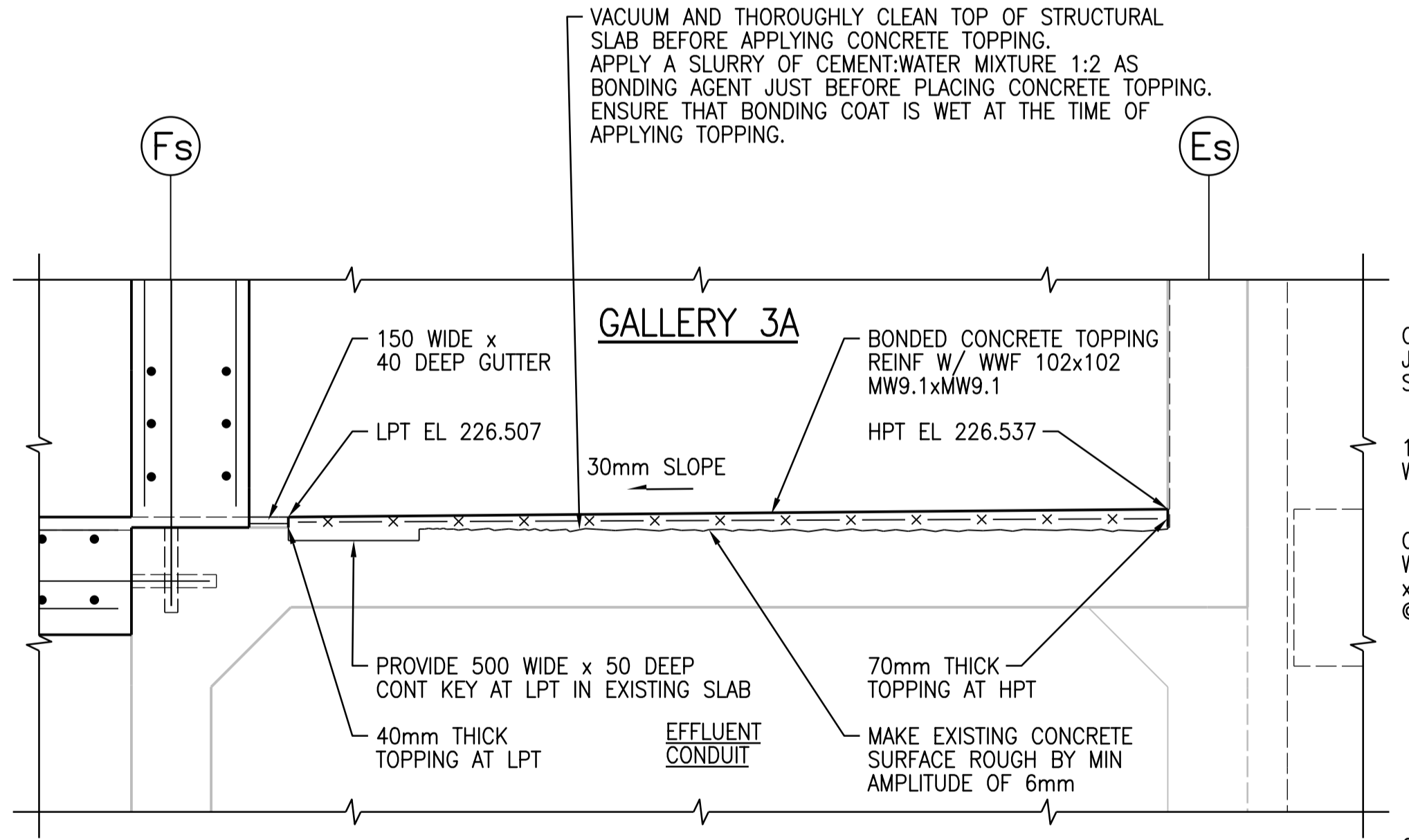
2 DETAIL
1:20
SGAD-S028



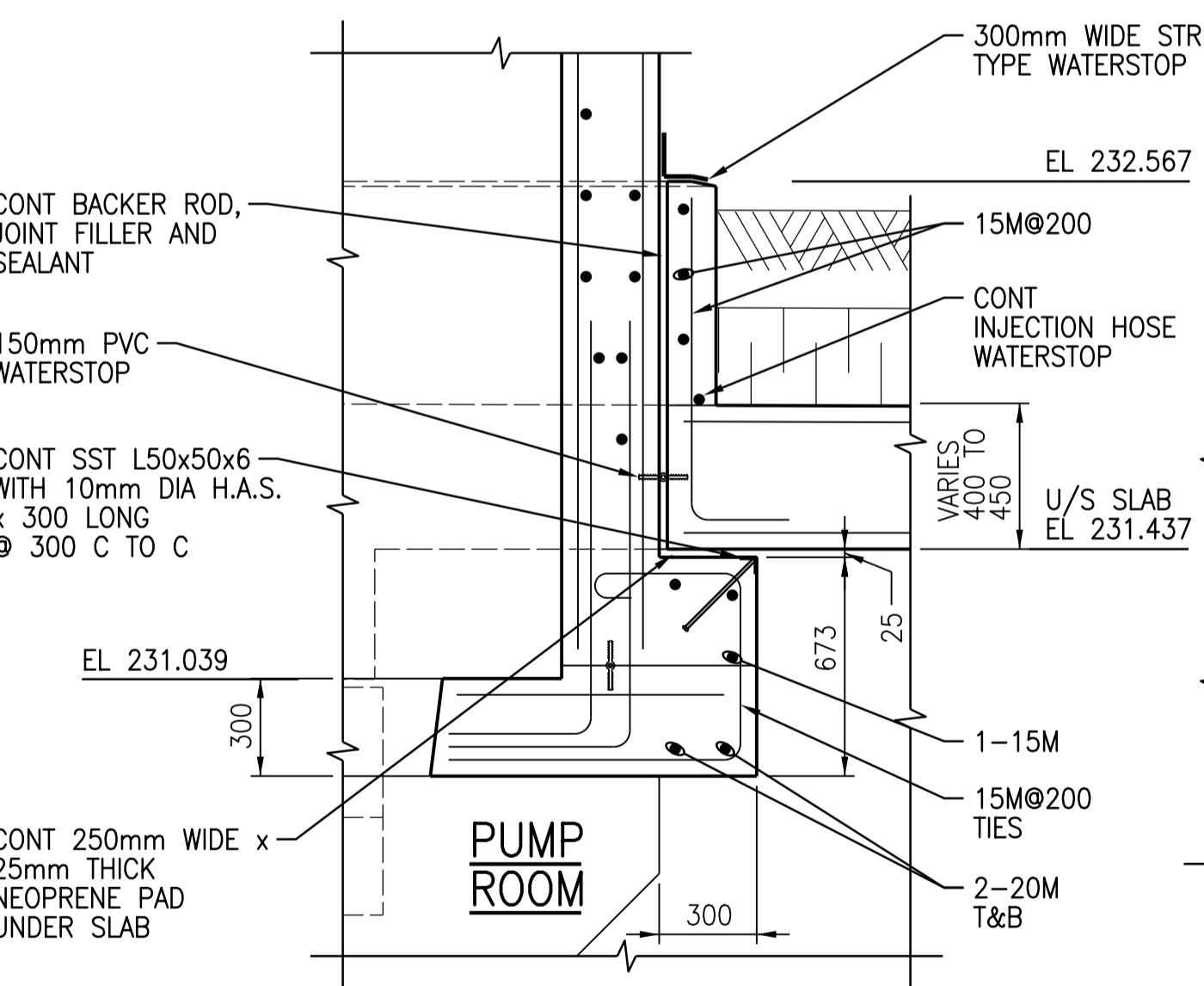
3 DETAIL
1:20
SGAD-S028



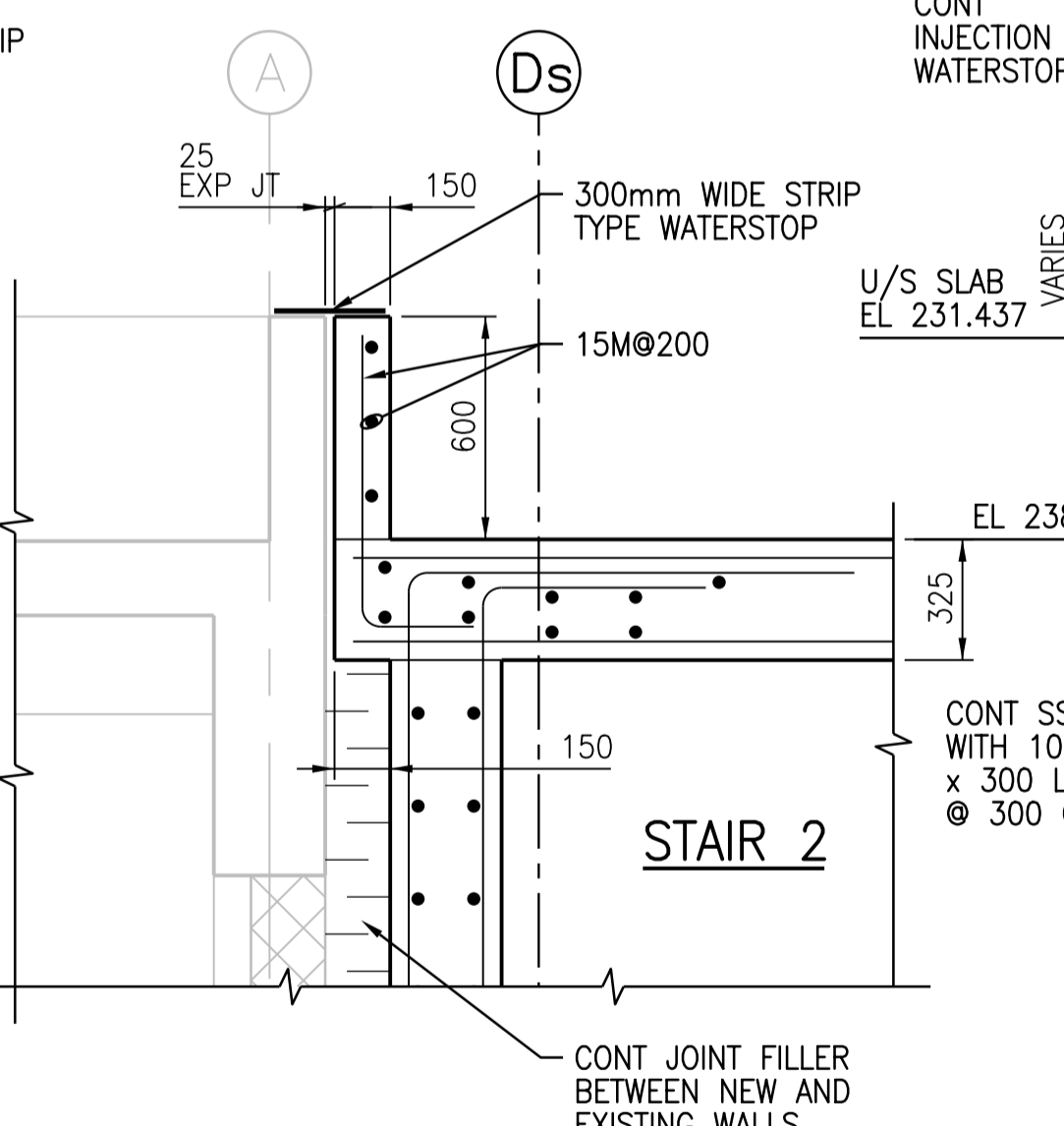
4 DETAIL
1:20
SGAD-S028



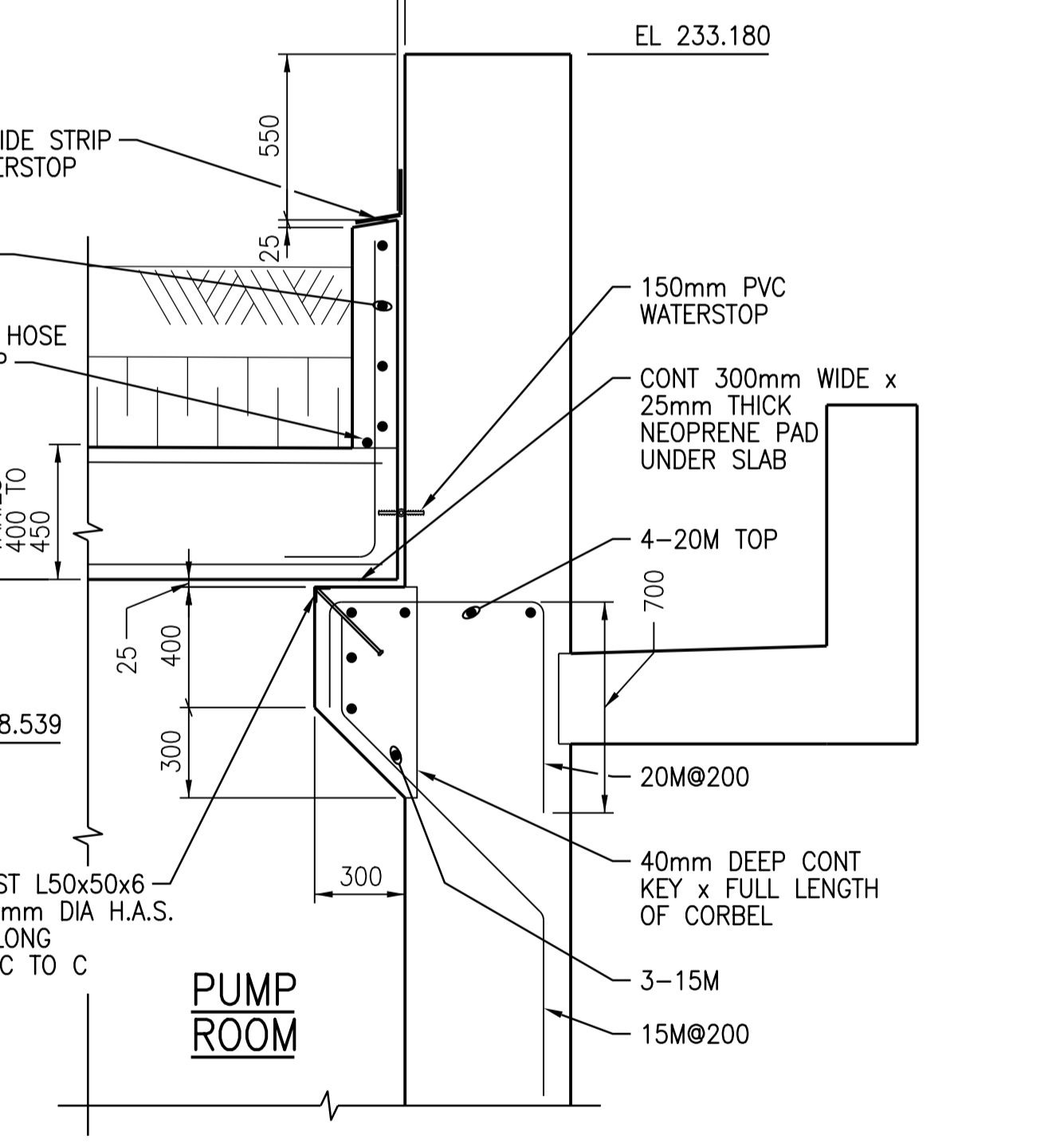
5 DETAIL
1:20
SGAD-S028



6 DETAIL
1:20
SGAD-S029



7 DETAIL
1:20
SGAD-S029

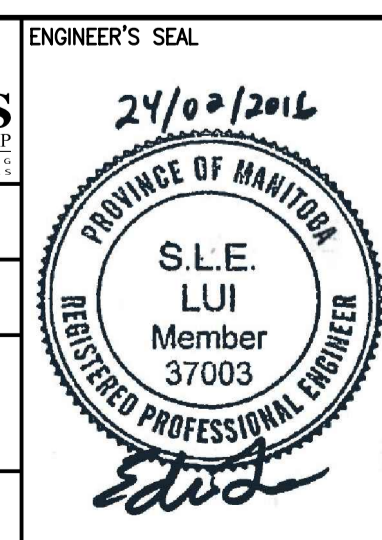


8 DETAIL
1:20
SGAD-S029



NO.	REVISIONS	DATE	DESIGN	CHECK
01	ISSUED FOR ADD. 2 - B.O. 899-2015	02/2016	G.O.	J.C.
00	ISSUED FOR TENDER - B.O. 899-2015	01/2016	G.O.	J.C.

CH2MHILL	
DESIGNED BY: A THAKKAR	CHECKED BY: R. PARIKH
DRAWN BY: G. OMORI	APPROVED BY: H.T. FREIHAMMER
SCALE: 1:20	ISSUED FOR CONSTRUCTION BY: T. TURZAK
DATE: 2016/01/29	DATE: 2016/01/29
CONSULTANT NO.: 474248	



THE CITY OF WINNIPEG
WATER AND WASTE DEPARTMENT

SOUTH END WATER POLLUTION CONTROL CENTRE
SEWPC UPGRADING/EXPANSION PROJECT
STRUCTURAL
SECONDARY CLARIFIERS 4 AND 5
DETAILS

CITY DRAWING NUMBER: 1-0102-SDTL-S013
SHEET: 001
REV: 01
SIZE: A1