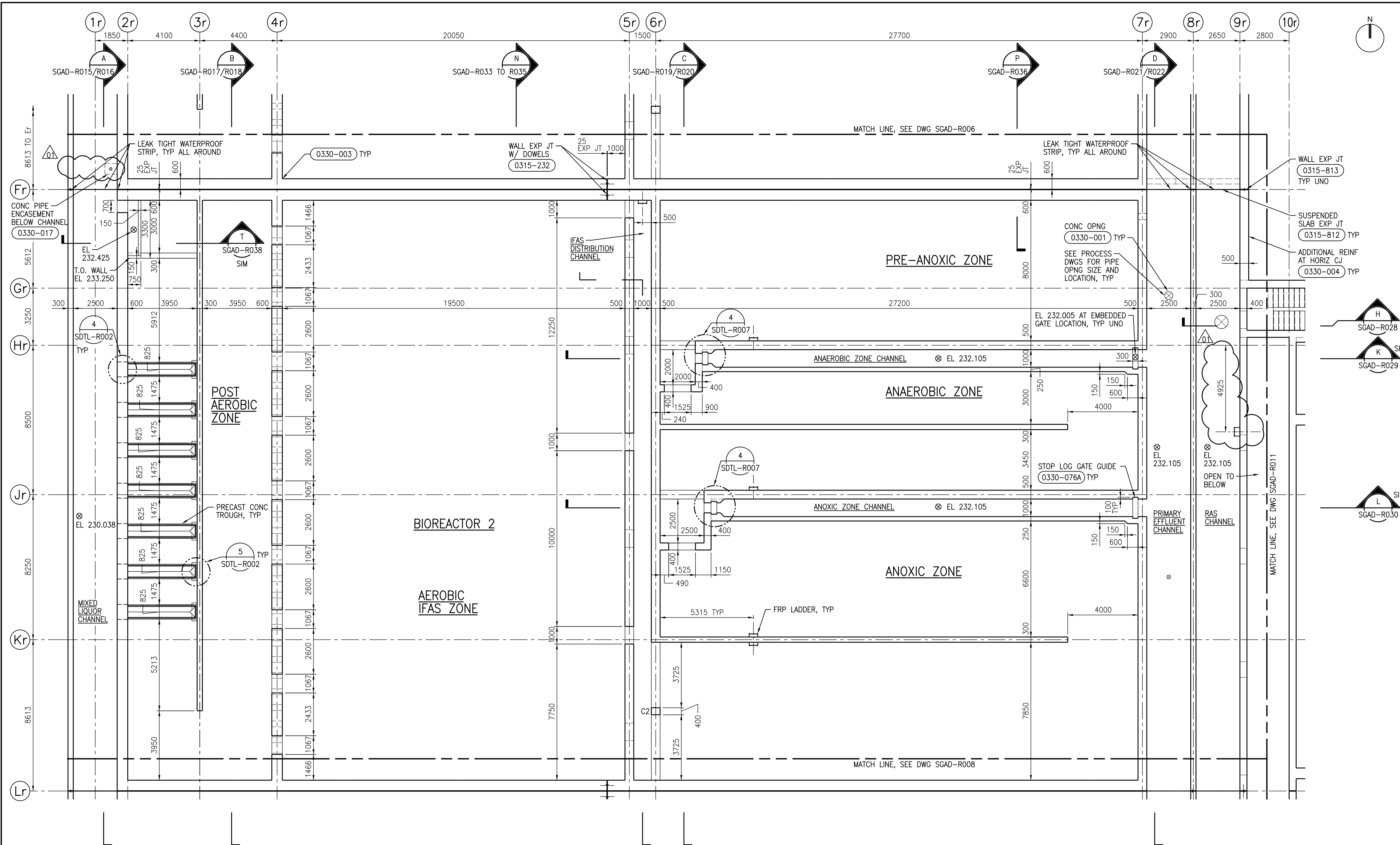
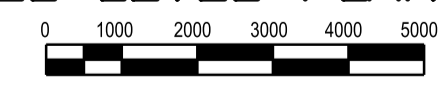


A1 SIZE - 594mm x 841mm

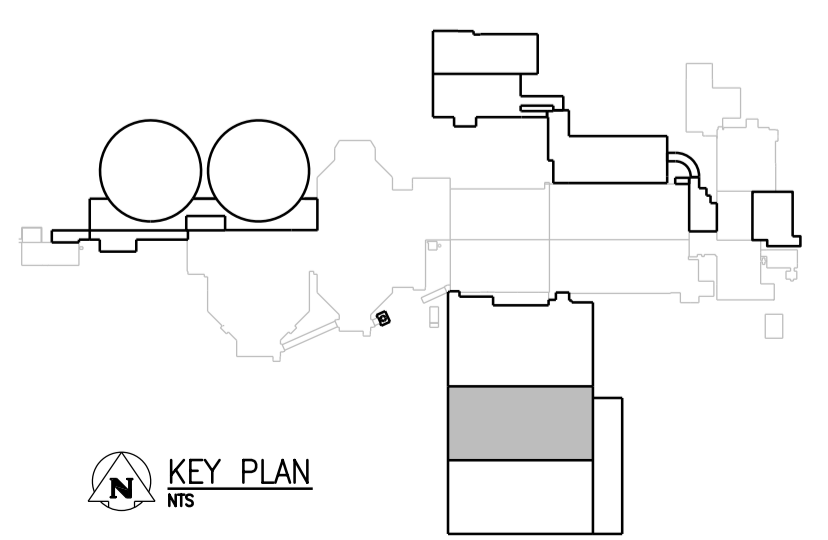
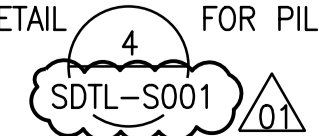


CHANNEL LEVEL PLAN

1:100



- NOTES:**
- REFER TO DRAWING 1-0102-SGAD-A001 FOR GENERAL STRUCTURAL NOTES.
 - PROVIDE 200mm THICK VOID FORMS BETWEEN SOIL AND CONCRETE SLAB.
 - FIELD VERIFY ELEVATION AND LOCATION OF EXISTING PILES AND PILE CAPS. NOTIFY CONTRACT ADMINISTRATOR OF DISCREPANCIES.
 - DESIGN LIVE LOAD OF STAIR 1 IS 4.8kPa.
 - SEE DETAIL 4 FOR PILE EMBEDMENT DETAIL.



NO.	REVISIONS	DATE	DESIGN	CHECK
01	ISSUED FOR ADD. 2 - B.O. 899-2015	02/2016	C.R.	J.C.
00	ISSUED FOR TENDER - B.O. 899-2015	01/2016	C.R.	J.C.

CH2MHILL
SNC-LAVALIN

DESIGNED BY: J. THANNICKAL
DRAWN BY: C. RYNARD
SCALE: 1:100

CHECKED BY: E. LUI
APPROVED BY: H.T. FREIHAMMER
ISSUED FOR CONSTRUCTION BY: T. TURZAK
DATE: 2016/01/29

CONSULTANT NO.: 474248

ENGINEER'S SEAL
24/02/2016
PROVINCE OF MANITOBA
S.E.I. LUI
Member 37003
REGISTERED PROFESSIONAL ENGINEER

THE CITY OF WINNIPEG
Winnipeg WATER AND WASTE DEPARTMENT

SOUTH END WATER POLLUTION CONTROL CENTRE
SEWPC UPGRADING/EXPANSION PROJECT
STRUCTURAL
BIOREACTOR 2
CHANNEL LEVEL PLAN

CITY DRAWING NUMBER: 1-0102-SGAD-R007
SHEET: 001
REV: 01
SIZE: A1