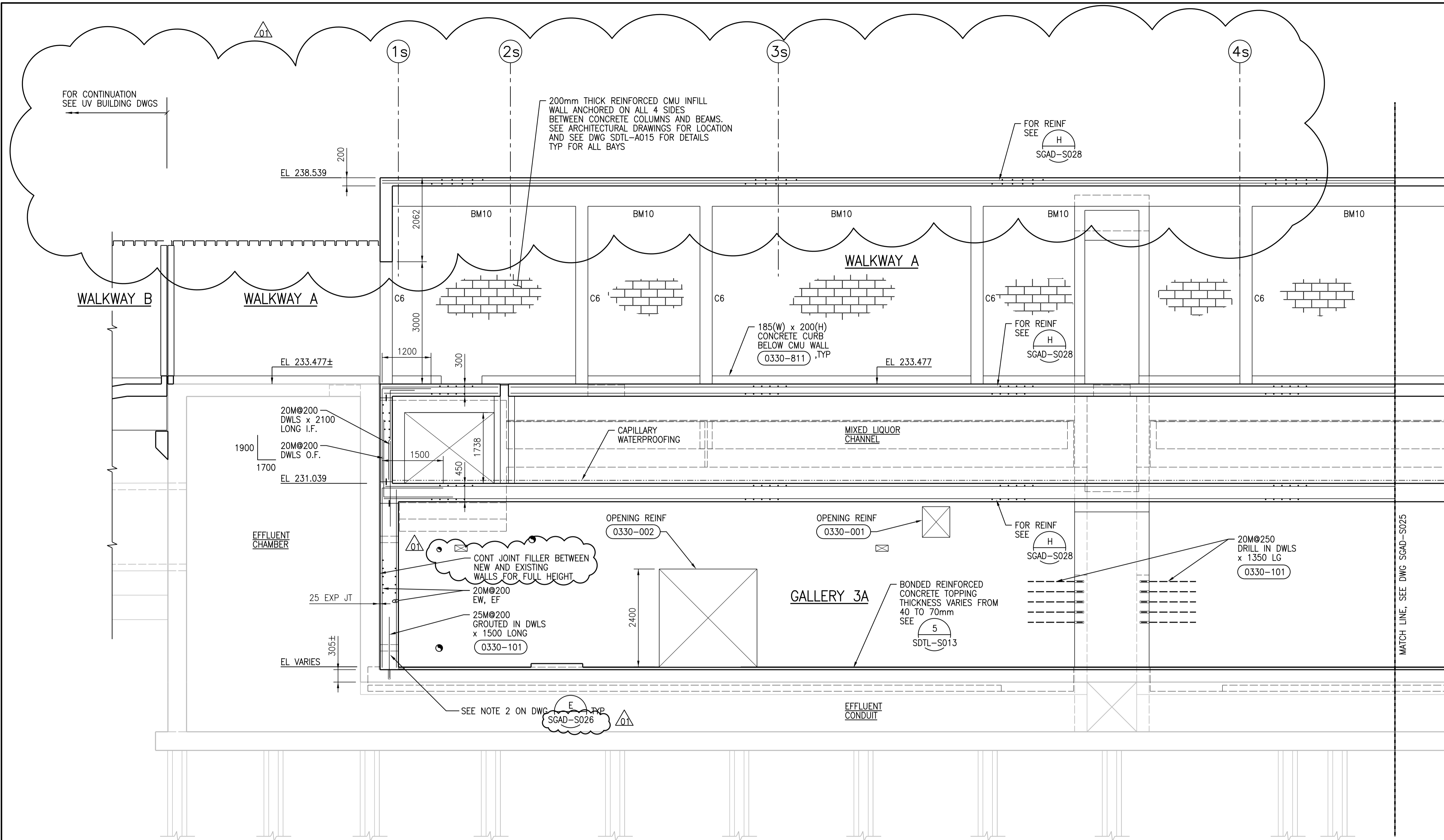


A1 SIZE - 594mm x 841mm



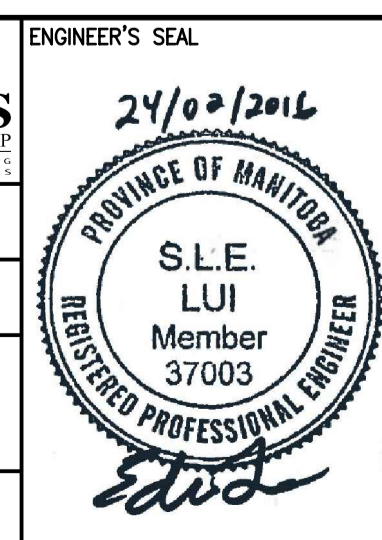
D SECTION - PART A
1:50

SCAD-S001, SGAD-S004,
SCAD-S006, SGAD-S010,
SCAD-S011, SGAD-S015,
SCAD-S016, SGAD-S017



NO.	REVISIONS	DATE	DESIGN	CHECK
01	ISSUED FOR ADD. 2 - B.O. 899-2015	02/2016	G.O.	J.C.
00	ISSUED FOR TENDER - B.O. 899-2015	01/2016	G.O.	J.C.

CH2MHILL		KGS GROUP	
SNC-LAVALIN		ENGINEERING CONSULTANTS	
DESIGNED BY: A. THAKKAR	CHECKED BY: E. LUI	DATE: 2016/01/29	ISSUED FOR CONSTRUCTION DATE: 2016/01/29
DRAWN BY: G. OMORI	APPROVED BY: H.T. FREIHAMMER	CONSULTANT NO.: 474248	
SCALE: 1:50	BY: T. TURZAK		



THE CITY OF WINNIPEG
Winnipeg WATER AND WASTE DEPARTMENT

SOUTH END WATER POLLUTION CONTROL CENTRE
SEWPC UPGRADE/EXPANSION PROJECT
STRUCTURAL
SECONDARY CLARIFIERS 4 AND 5
SECTION D - PART A

CITY DRAWING NUMBER: 1-0102-SGAD-S024 | SHEET: 001 | REV: 01 | SIZE: A1