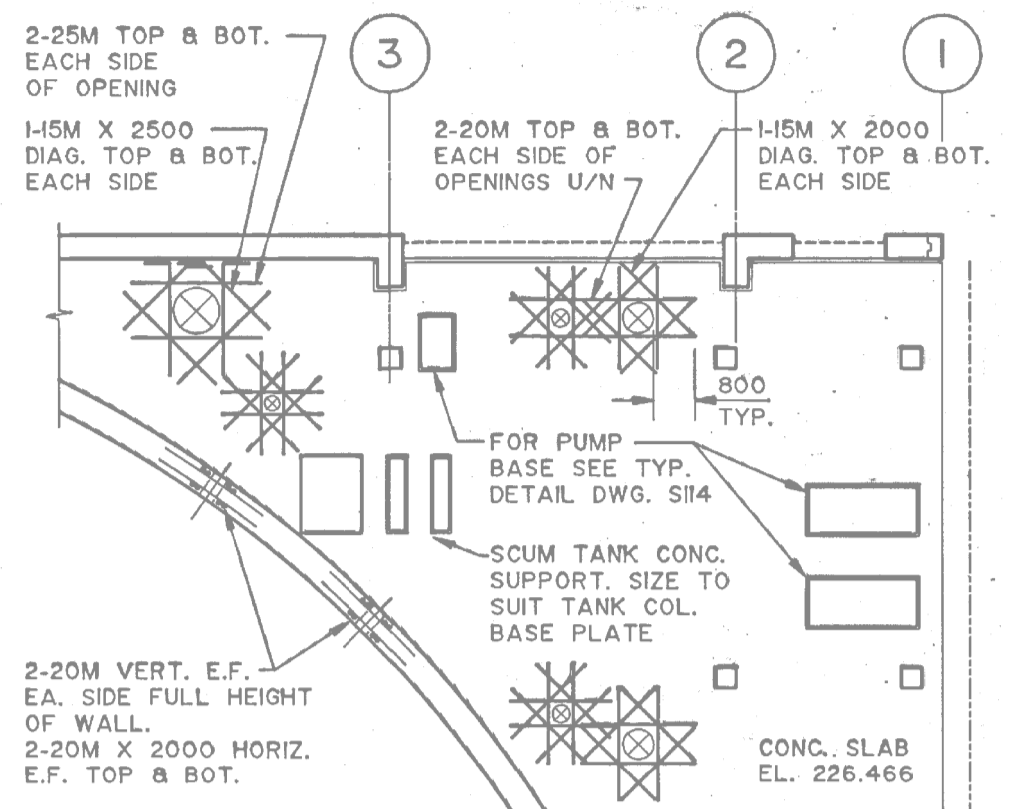
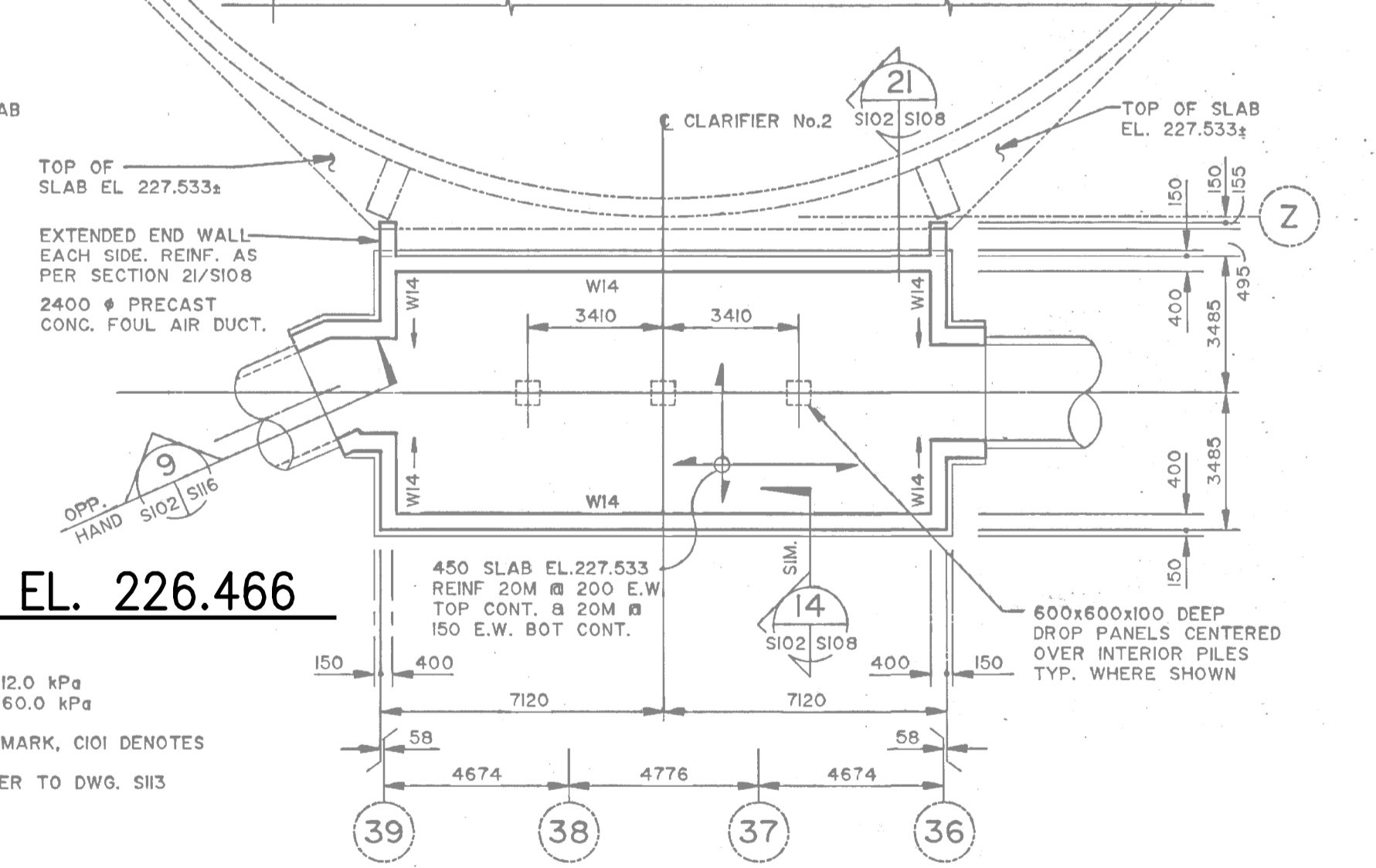


CUT AND REMOVE EXISTING CONCRETE SEE 0330-808 & 0330-817 TYPICAL FOR ALL DEMOLITION SHOWN ON THIS DRAWING



2 PART. BASEMENT PLAN AT MECH. OPENINGS

SECONDARY CLARIFIER No.2



PLAN AT EL. 226.466

NTS
 DESIGN LIVE LOAD:
 GENERAL AREA = 12.0 kPa
 TANK FLOOR = 60.0 kPa
 NOTE:
 W1 DENOTES WALL MARK, C101 DENOTES COLUMN MARK.
 FOR SCHEDULE REFER TO DWG. S13

- NOTES:
1. FOR NEW CONSTRUCTION SEE DRAWING 1-0102-SGAD-S004 AND 1-0102-SGAD-S005.
 2. REFER TO GENERAL DEMOLITION NOTES DRAWING 4-0102-DGAD-A001.

APEGM
 Certificate of Authorization
 CH2M HILL Canada Ltd.
 No. 1441

NO.	REVISIONS	DATE	DESIGN	CHECK
01	ISSUED FOR ADD. 2 - B.O. 899-2015	02/2015	G.O.	J.C.
00	ISSUED FOR TENDER - B.O. 899-2015	01/2016	G.G.	J.C.

CH2MHILL.
 SNC-LAVALIN
 DESIGNED BY: E. LUJ
 CHECKED BY: R. PARIKH
 DRAWN BY: G.GERMAN
 APPROVED BY: H.T. FREIHAMMER
 SCALE: NTS
 ISSUED FOR CONSTRUCTION BY: T. TURZAK
 DATE: 2016/01/29
 DATE: 2016/01/29
 CONSULTANT NO.: 474248

ENGINEER'S SEAL
S.L.E. LUI
 Member 37003
 REGISTERED PROFESSIONAL ENGINEER

SEALING ARCHITECT OR ENGINEER ACCEPTS RESPONSIBILITY ONLY FOR AREAS IDENTIFIED BY CLOUDING ON THIS DRAWING.
 NOTE: THIS DRAWING SUPERSEDES DRAWING SEP-408
THE CITY OF WINNIPEG
 WATER AND WASTE DEPARTMENT
 SOUTH END WATER POLLUTION CONTROL CENTRE
 SEWPCC UPGRADING/EXPANSION PROJECT
 STRUCTURAL
 SECONDARY CLARIFIERS - CONCRETE AND CMU REMOVALS
 PLANS (1)
 CITY DRAWING NUMBER: 1-0102-SGAD-S050
 SHEET: 001
 REV: 01
 SIZE: A1

