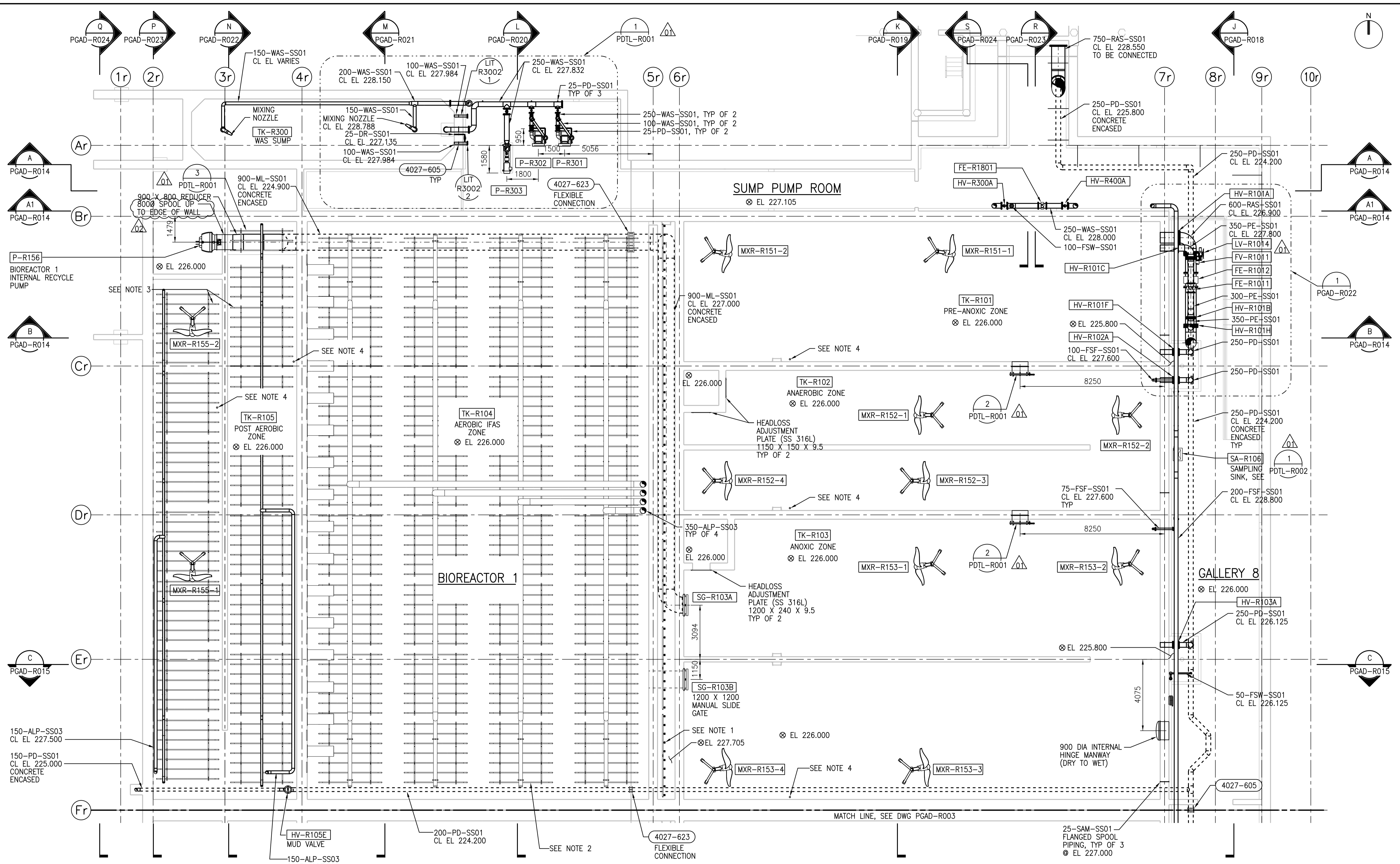


A1 SIZE - 594mm x 841mm

© CH2M HILL 2015. ALL RIGHTS RESERVED.



- NOTES:**
1. COARSE BUBBLE AERATION REMOVABLE MANIFOLD ASSEMBLIES TYPICAL (REFER TO VENDOR DRAWINGS FOR PLACEMENT LOCATION AND DETAILS).
 2. AEROBIC IFAS ZONE AERATION SYSTEM (REFER TO VENDOR DRAWINGS FOR PLACEMENT LOCATION AND DETAILS).
 3. POST AEROBIC ZONE AERATION ASSEMBLIES SYSTEM (REFER TO VENDOR DRAWINGS FOR PLACEMENT LOCATION AND DETAILS).
 4. SAMPLING AT ELEVATION 229M FIELD ROUTE 25-PVC PIPING TO SAMPLING SINK. AVOID HIGH POINTS IN ROUTING TO PREVENT AIR LOCKS.

LOWER LEVEL PLAN - PART 1

1:100



APEGM
Certificate of Authorization
CH2M HILL Canada Ltd.
No. 1441

NO.	REVISIONS	DATE	DESIGN	CHECK
02	ISSUED FOR ADD. 4 - B.O. 899-2015	03/2016	B.C.	J.C.
01	ISSUED FOR ADD. 2 - B.O. 899-2015	02/2016	B.C.	J.C.
00	ISSUED FOR TENDER - B.O. 899-2015	01/2016	B.C.	J.C.

CH2MHILL
SNC-LAVALIN
DESIGNED BY: F. ABSI
DRAWN BY: B. COOPER
SCALE: 1:100
DATE: 2016/01/29
CONSULTANT NO.: 474248

CHECKED BY: B. EDGAR
APPROVED BY: H.T. FREIHAMMER
ISSUED FOR CONSTRUCTION BY: T. TURZAK
DATE: 2016/01/29

ENGINEER'S SEAL
March 30, 2016
PROVINCE OF MANITOBA
REGISTERED PROFESSIONAL ENGINEER
F. J. ABSI
Member 38875

THE CITY OF WINNIPEG
WATER AND WASTE DEPARTMENT
SOUTH END WATER POLLUTION CONTROL CENTRE
SEWPPCC UPGRADING/EXPANSION PROJECT
PROCESS
BIOREACTOR 1
LOWER LEVEL PLAN - PART A
CITY DRAWING NUMBER: 1-0102-PGAD-R002
SHEET: 001
REV: 02
SIZE: A1

