

A SECTION - PART B
1:50

SGAD-R001, SGAD-R002,
SGAD-R003, SGAD-R004,
SGAD-R005, SGAD-R006,
SGAD-R007, SGAD-R008,
SGAD-R009, SGAD-R010,
SGAD-R011, SGAD-R012

NOTE:

1. USE CLASS 4 BACKFILL COMPACTED TO 98% SPMD UNLESS NOTED OTHERWISE ON DRAWINGS.

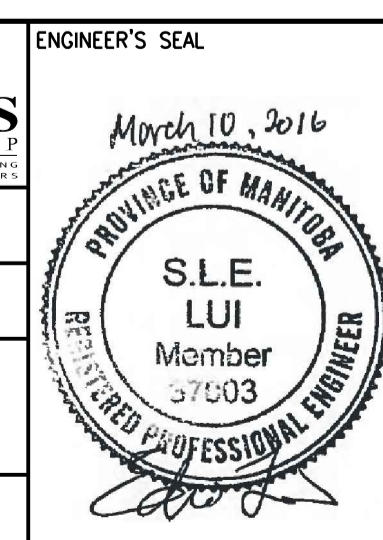


NO.	REVISIONS	DATE	DESIGN	CHECK
02	ISSUED FOR ADD. 4 - B.O. 899-2015	03/2016	C.R.	J.C.
01	ISSUED FOR ADD. 2 - B.O. 899-2015	02/2016	C.R.	J.C.
00	ISSUED FOR TENDER - B.O. 899-2015	01/2016	C.R.	J.C.

CH2MHILL
SNC-LAVALIN

DESIGNED BY: J. THANNICKAL
DRAWN BY: C. RYNARD
SCALE: 1:50
DATE: 2016/01/29
CONSULTANT NO.: 474248

CHECKED BY: E. LUI
APPROVED BY: H.T. FREIHAMMER
ISSUED FOR CONSTRUCTION BY: T. TURZAK
DATE: 2016/01/29



THE CITY OF WINNIPEG
Winnipeg WATER AND WASTE DEPARTMENT

SOUTH END WATER POLLUTION CONTROL CENTRE
SEWPC UPGRADING/EXPANSION PROJECT
STRUCTURAL
BIOREACTORS/BLOWER BUILDING
SECTION A - PART B

CITY DRAWING NUMBER: 1-0102-SGAD-R016
SHEET: 001
REV: 02
SIZE: A1