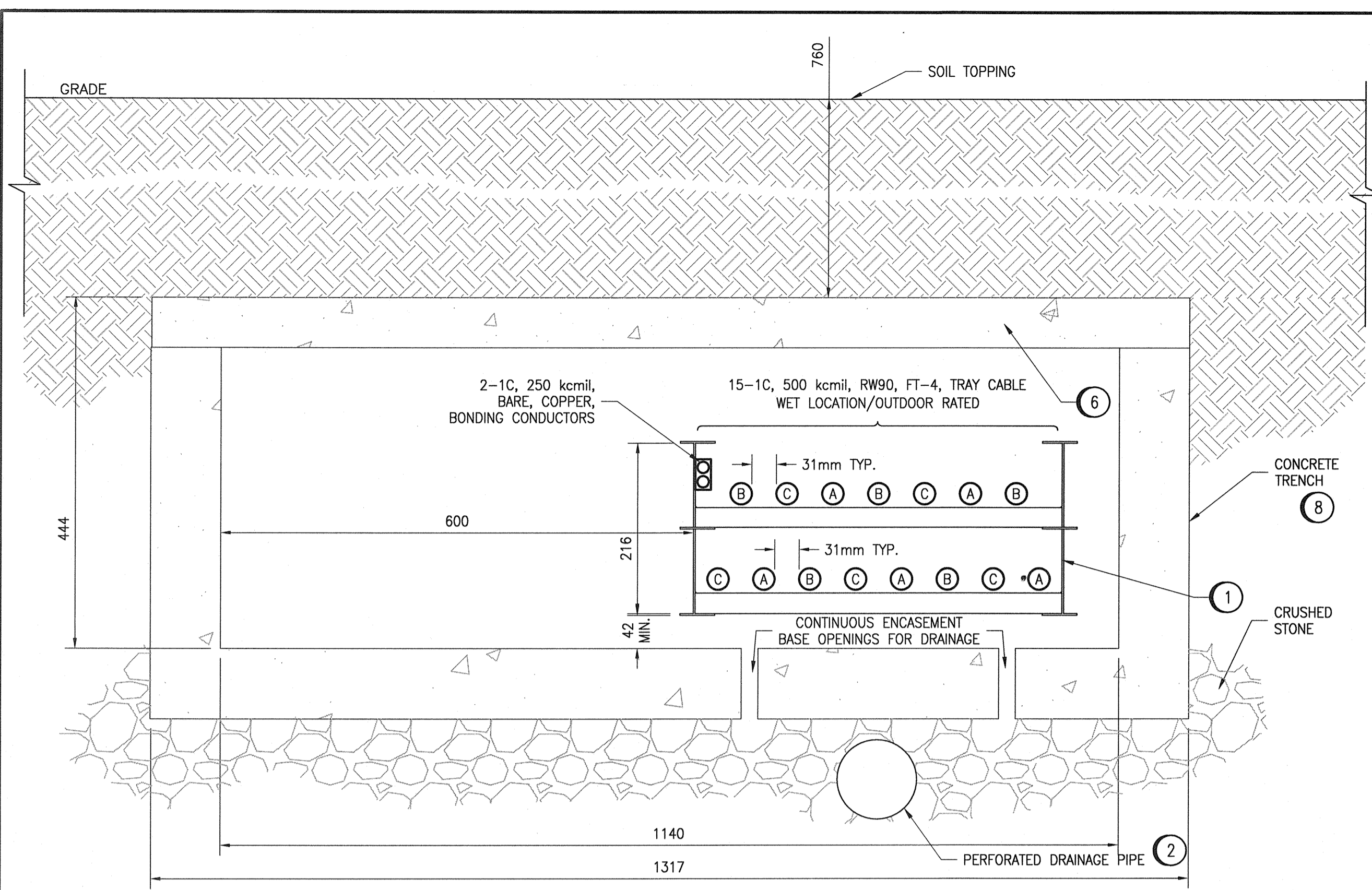


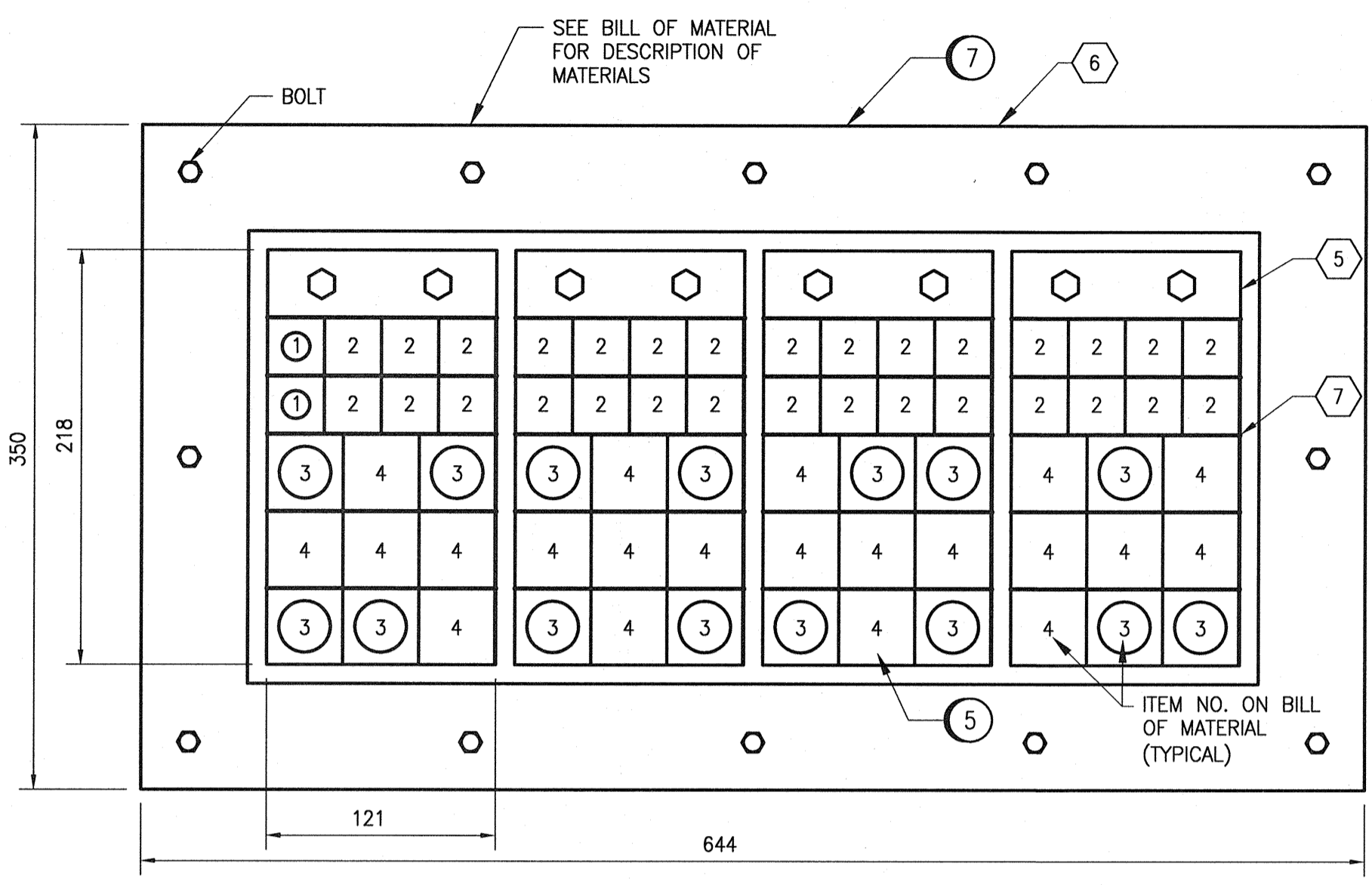
A1 SIZE - 594mm x 841mm



**A SECTION - CABLE BUS & CONCRETE TRENCH**  
SCALE: NTS

**GENERAL NOTES**

1. REFER TO TECHNICAL SPECIFICATION 26 25 01 FOR DETAILS ON MAXIAMP CABLE BUS TRENCH.
2. ALL DIMENSIONS SHOWN AS APPROXIMATE. SHALL BE COORDINATED/DETERMINED BY THE CONTRACTORS.
3. ALL CONCRETE SHALL HAVE REBAR STEEL RE-ENFORCING WITHIN. REFER TO STRUCTURAL DRAWINGS.
4. CONTRACTOR TO BE FULLY TRAINED ON THE INSTALLATION OF THE ROXTEC CABLE SEALS PRIOR TO INSTALLATION AND SHOW EVIDENCE OF SUCH TRAINING PRIOR TO INSTALLATION.



**DETAIL 1 - ROXTEC CABLE SEAL**  
SCALE: 1 : 3

**SPECIFIC NOTES:**

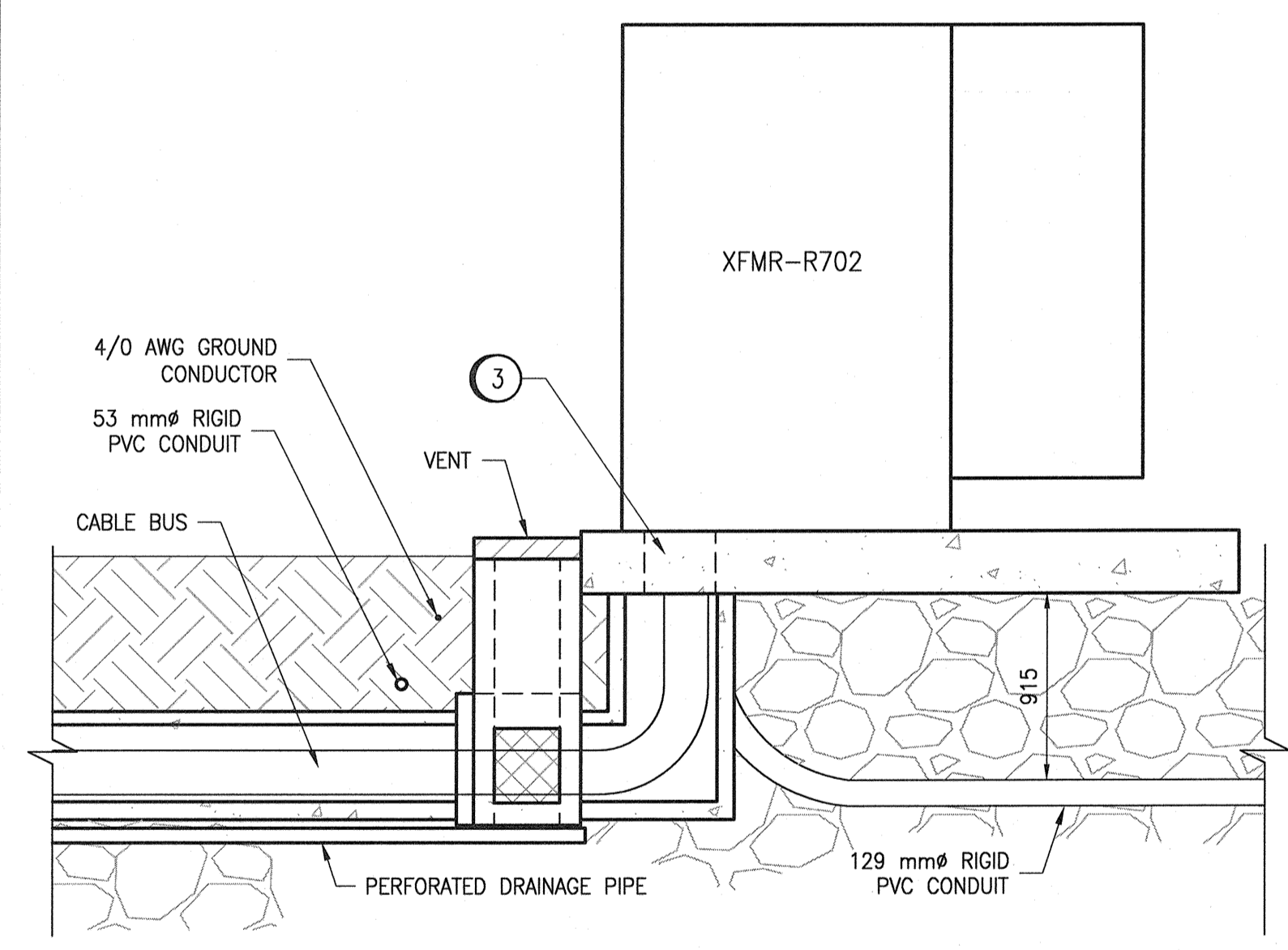
1. SUPPLY AND INSTALL MAXIAMP CABLE BUS SYSTEM.
2. PROVIDE DRAIN TIED INTO WEeping TILE SYSTEM.
3. SECTION OF THE TRANSFORMER PAD BELOW CABLE COMPARTMENT TO ALLOW FOR CABLE ENTRY. COORDINATE REQUIREMENTS WITH CONCRETE WORKS. SEE TRANSFORMER CONCRETE PAD DETAIL AS SHOWN.
4. CONCRETE TRENCH COMPLETE WITH CONCRETE FLOORING AND REMOVABLE CHECKERED METAL COVER PLATE. DETAIL AS SHOWN SECTION C. EXACT TRENCH DEPTH DIMENSION AS SHOWN IN STRUCTURAL DRAWINGS. MINIMUM TO BE 1182mm.
5. ENSURE CORRECT ROXTEC SEALING MODULES ARE PROVIDED IN PROPER LOCATION TO ACCOMMODATE CABLES FROM MAXIAMP CABLE BUS SYSTEM. ROUTE CABLES AS INDICATED.
6. CONCRETE TRENCH COVER SHALL BE REMOVABLE TO ALLOW FOR INSTALLATION AND FUTURE MAINTENANCE OF THE CABLE BUS SYSTEM.
7. VERIFY ALL DIMENSIONS WITH ROXTEC.
8. REFER TO STRUCTURAL DRAWINGS FOR EXACT DETAILS AND DIMENSIONS OF CONCRETE TRENCH.

ROXTEC CABLE SEAL BILL OF MATERIAL				
ITEM	QTY	ROXTEC MATERIAL	MODEL	NOTES
1	2	SEALING MODULES, WITH CORE, RM 30	RM00100301000	1
2	30	SEALING MODULES, SOLID COMPENSATION, RM 30	RM00300301000	3
3	15	SEALING MODULES, WITH CORE, RM 40,	RM00100401000	2
4	21	SEALING MODULES, SOLID COMPENSATION, RM 40	RM00300401000	3
5	4	120mm AISI 316 WEDGE	ARW0001201021	
6	1	GH 6X4 AISI 316 FRAME	5GH0000007904	
7	20	120mm AISI 316 STAYPLATE	ASPO001200021	

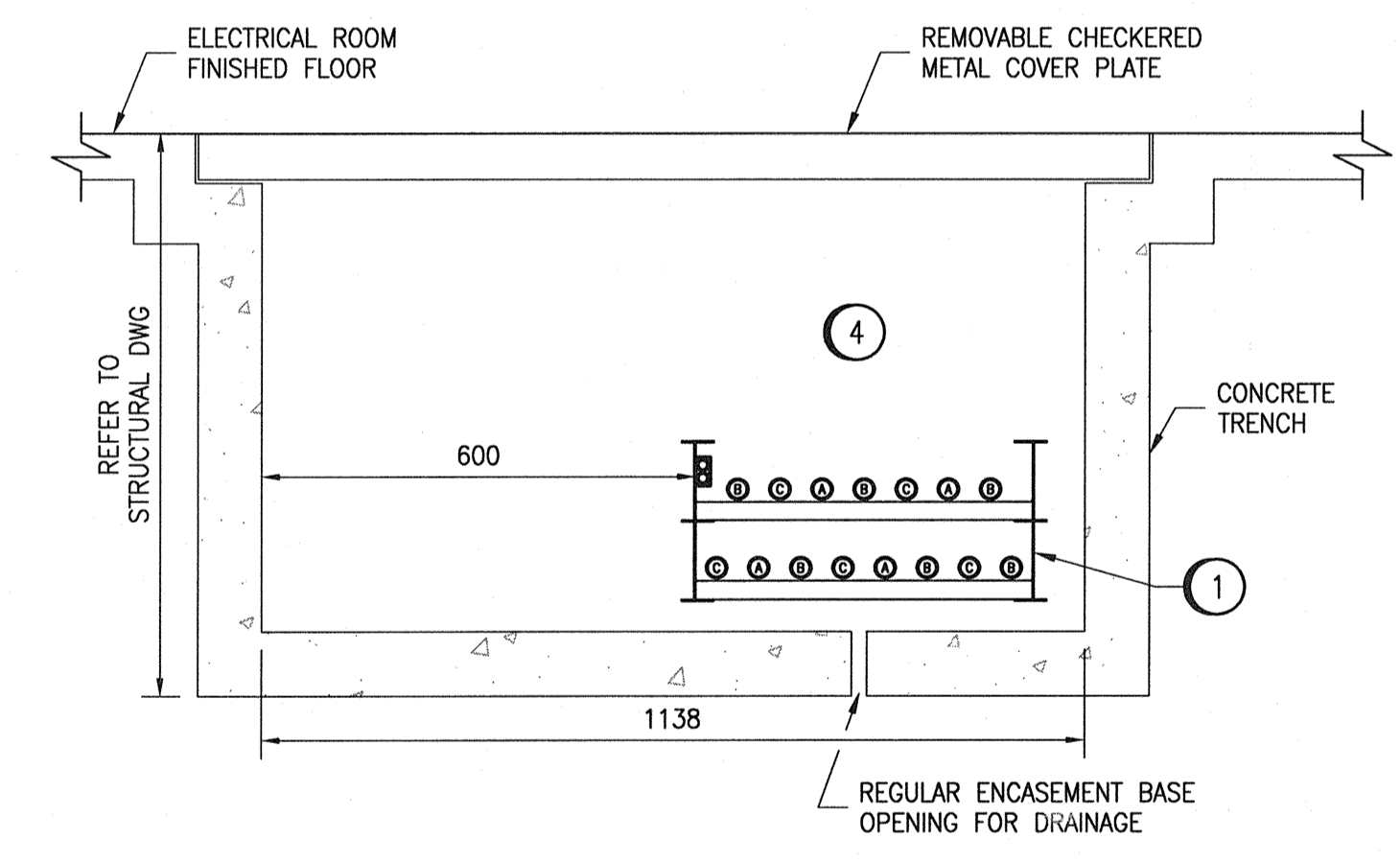
**SPECIFIC NOTES:**

1. DESIGNATED FOR 2C, 250 kcmil, BARE COPPER BONDING CONDUCTORS.
2. DESIGNATED FOR 15-1C, 500 kcmil RW90 CONDUCTORS.
3. SPARE SEALING MODULES.
4. QUANTITY OF EQUIPMENT STATED IS FOR ONE (1) ROXTEC CABLE SEAL SYSTEM. THERE ARE TWO CABLE SEAL SYSTEMS INSTALLED (FOR C-R701-2 & C-R702-2).

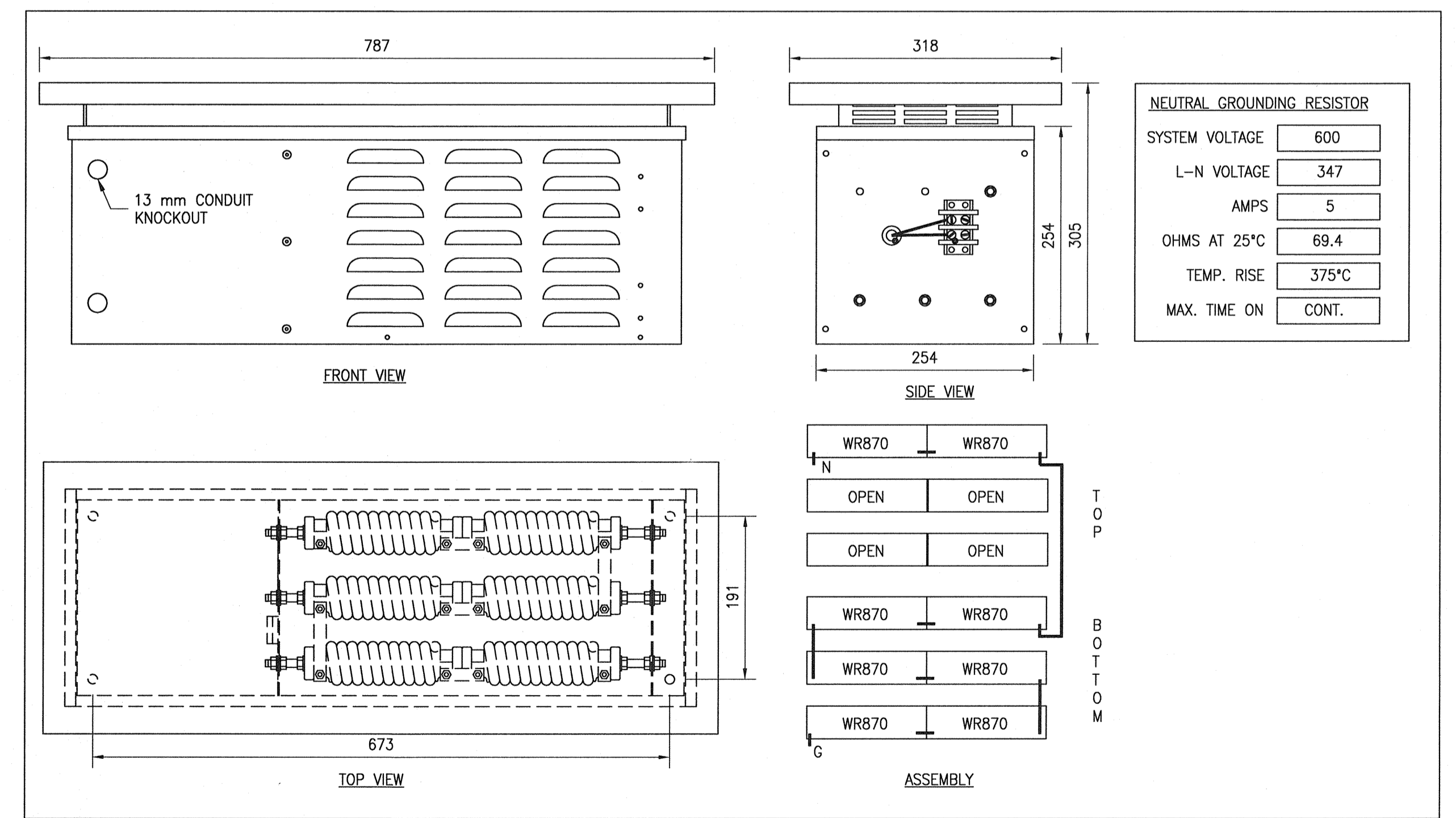
\* BILL OF MATERIALS SHOWN MAY NOT INCLUDE ALL ITEMS REQUIRED. CONTRACTOR TO PROVIDE A COMPLETE AND FUNCTIONING SYSTEM.



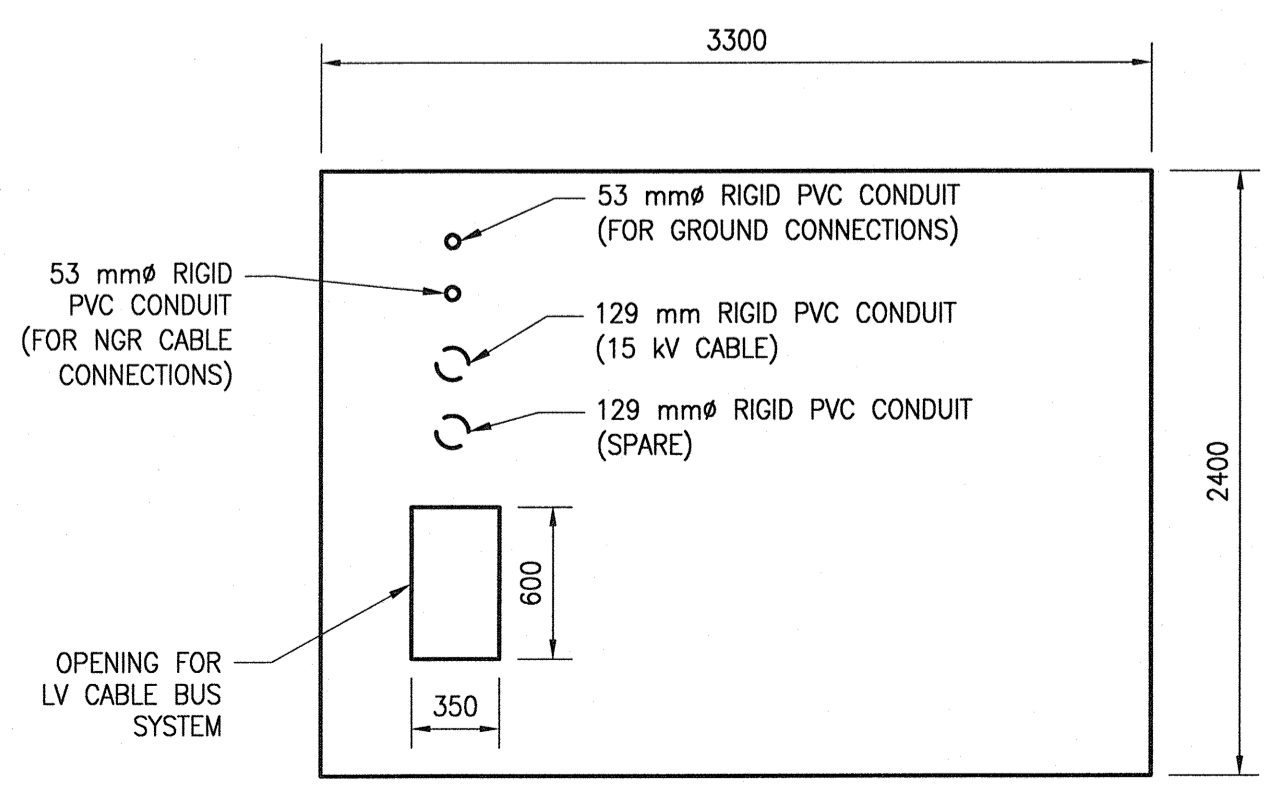
**B SECTION - CABLE BUS ENTRY TO XFMR**  
SCALE: NTS



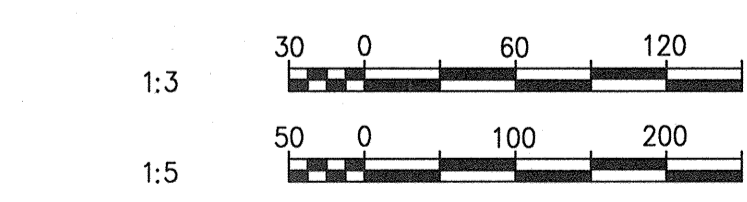
**C SECTION - INDOOR CONCRETE TRENCH**  
SCALE: NTS



**DETAIL 3 - NEUTRAL GROUNDING RESISTOR**  
SCALE: 1 : 5



**DETAIL 2 - XFMR CONCRETE PAD**  
SCALE: NTS



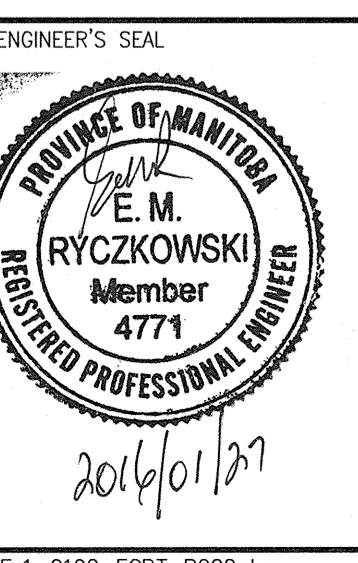
1-0102-ECRT-R001	CABLE ROUTING, CABLE BUS SYSTEM LAYOUT
REFERENCE DRAWINGS	DESCRIPTION



00	ISSUED FOR TENDER - B.O. 899-2015	01/2016	WE	DEB
NO.	REVISIONS	DATE	DESIGN	CHECK

**CH2MHILL**  
SNC-Lavalin  
DESIGNED BY: V. ELIMBAN  
DRAWN BY: MJ. PERSSON  
SCALE: AS SHOWN  
DATE: 2015/01/16

ENGINEER'S SEAL  
E. M. RYCKOWSKI  
REGISTERED PROFESSIONAL ENGINEER  
4771  
2016/01/27



**THE CITY OF WINNIPEG**  
WATER AND WASTE DEPARTMENT

SOUTH END WATER POLLUTION CONTROL CENTRE  
SEWPCC UPGRADING/EXPANSION PROJECT  
ELECTRICAL - CABLE ROUTING  
BIOREACTORS/BLOWER BUILDING  
CABLE BUS SYSTEM SECTIONS & DETAILS

CITY DRAWING NUMBER: 1-0102-ECRT-R002  
SHEET: 001  
REV.: 00  
SIZE: A1

LAST SAVE: 2016/01/27 - 12:26pm  
PATH: C:\pw\_workdir\ch2mhill\wg\mp\006714\00356455\1-0102-ECRT-R002.dwg