

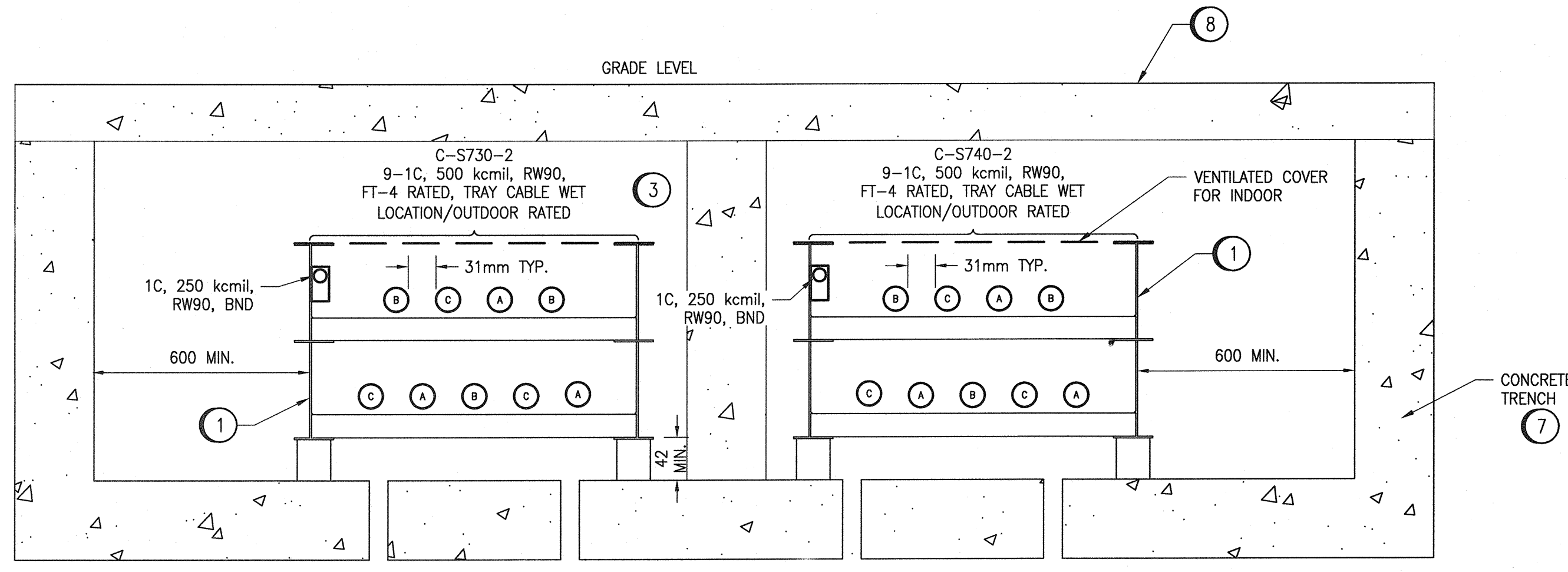
A1 SIZE - 594mm x 841mm

**GENERAL NOTES**

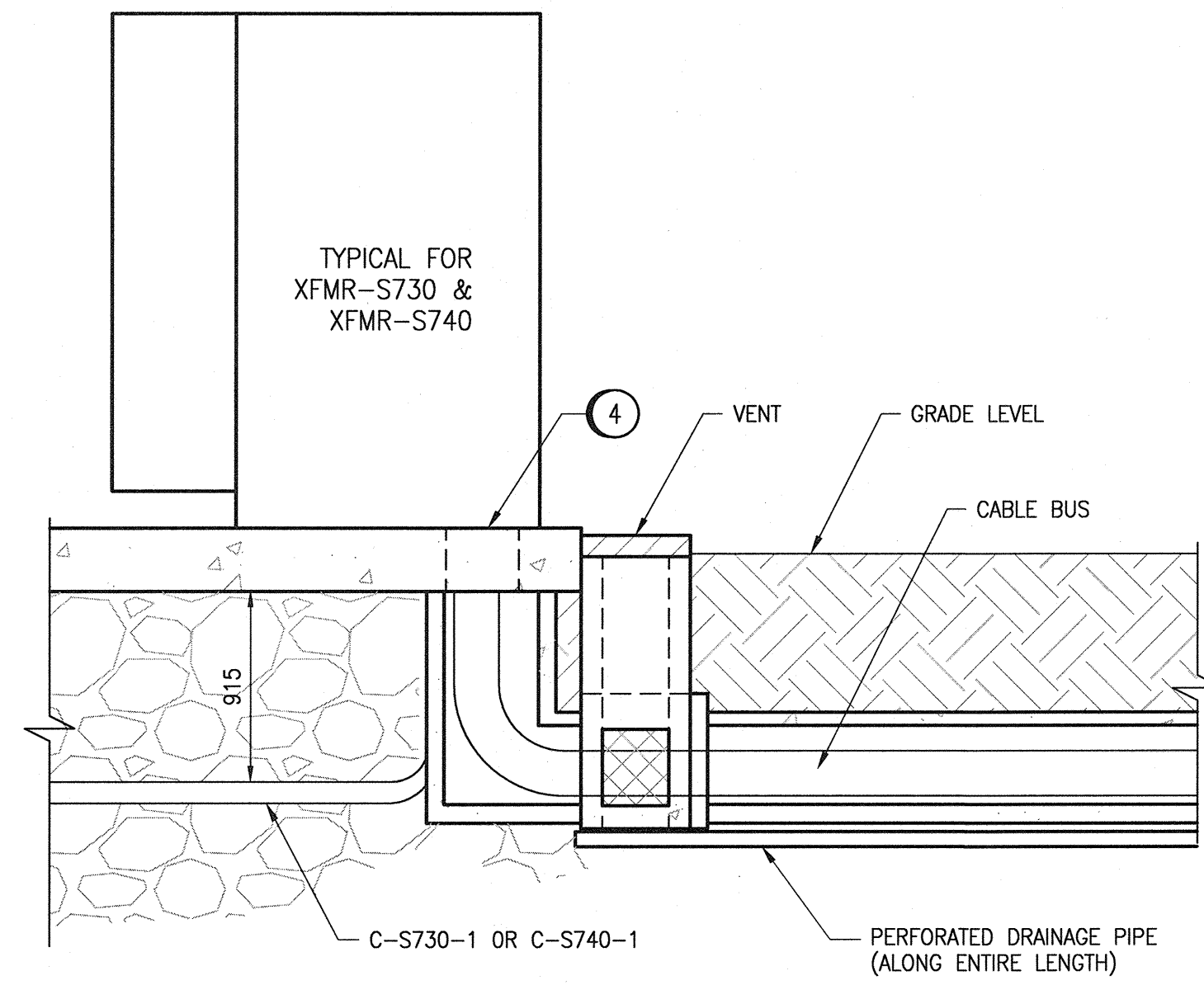
- REFER TO TECHNICAL SPECIFICATION 26 25 01 FOR DETAILS ON MAXIAMP CABLE BUS TRENCH.
- ALL DIMENSIONS SHOWN AS APPROXIMATE SHALL BE COORDINATED/ DETERMINED BY THE CONTRACTORS.
- ALL CONCRETE SHALL HAVE REBAR STEEL RE-ENFORCING WITHIN. REFER TO STRUCTURAL DRAWINGS FOR DETAILS.
- CONTRACTOR TO BE FULLY TRAINED ON THE INSTALLATION OF THE ROXTEC CABLE SEALS PRIOR TO INSTALLATION AND SHOW EVIDENCE OF SUCH TRAINING PRIOR TO INSTALLATION.
- FOR THE CONCRETE TRENCH, REFER TO STRUCTURAL DRAWINGS FOR DETAILS AND DIMENSIONS.

**SPECIFIC NOTES:**

- SUPPLY AND INSTALL MAXIAMP CABLE BUS SYSTEM.
- PROVIDE DRAIN TIED INTO WEeping TILE SYSTEM.
- THE HORIZONTAL DISTANCE BETWEEN CABLE BUS SYSTEMS SHOULD BE LARGE ENOUGH SO THAT TWO (2) ROXTEC CABLE SYSTEMS, EACH ARRANGED AS SHOWN IN DETAIL 1, CAN BE MOUNTED SIDE BY SIDE AT THE EXTERIOR WALL OF THE SECONDARY CLARIFIER BUILDING.
- SECTION OF THE TRANSFORMER PAD BELOW CABLE COMPARTMENT TO ALLOW FOR CABLE ENTRY. COORDINATE REQUIREMENTS WITH CONCRETE WORKS. SEE TRANSFORMER PAD DETAIL ON THIS DRAWING.
- ENSURE CORRECT ROXTEC SEALING MODULES ARE PROVIDED IN PROPER LOCATION TO ACCOMMODATE CABLES FROM MAXIAMP CABLE BUS SYSTEM. ROUTE CABLES AS INDICATED.
- TOP OF CONCRETE ENCASUREMENT IS AT GRADE LEVEL.
- REFER TO STRUCTURAL DRAWINGS FOR EXACT DETAILS AND DIMENSIONS OF CONCRETE TRENCH.
- CONCRETE TRENCH COVER SHALL BE REMOVABLE TO ALLOW FOR INSTALLATION AND FUTURE MAINTENANCE OF THE CABLE BUS SYSTEM.
- VERIFY ALL DIMENSIONS WITH ROXTEC.



**A SECTION - CABLE BUS & CONCRETE TRENCH**  
SCALE : NTS  
ECRT-S002

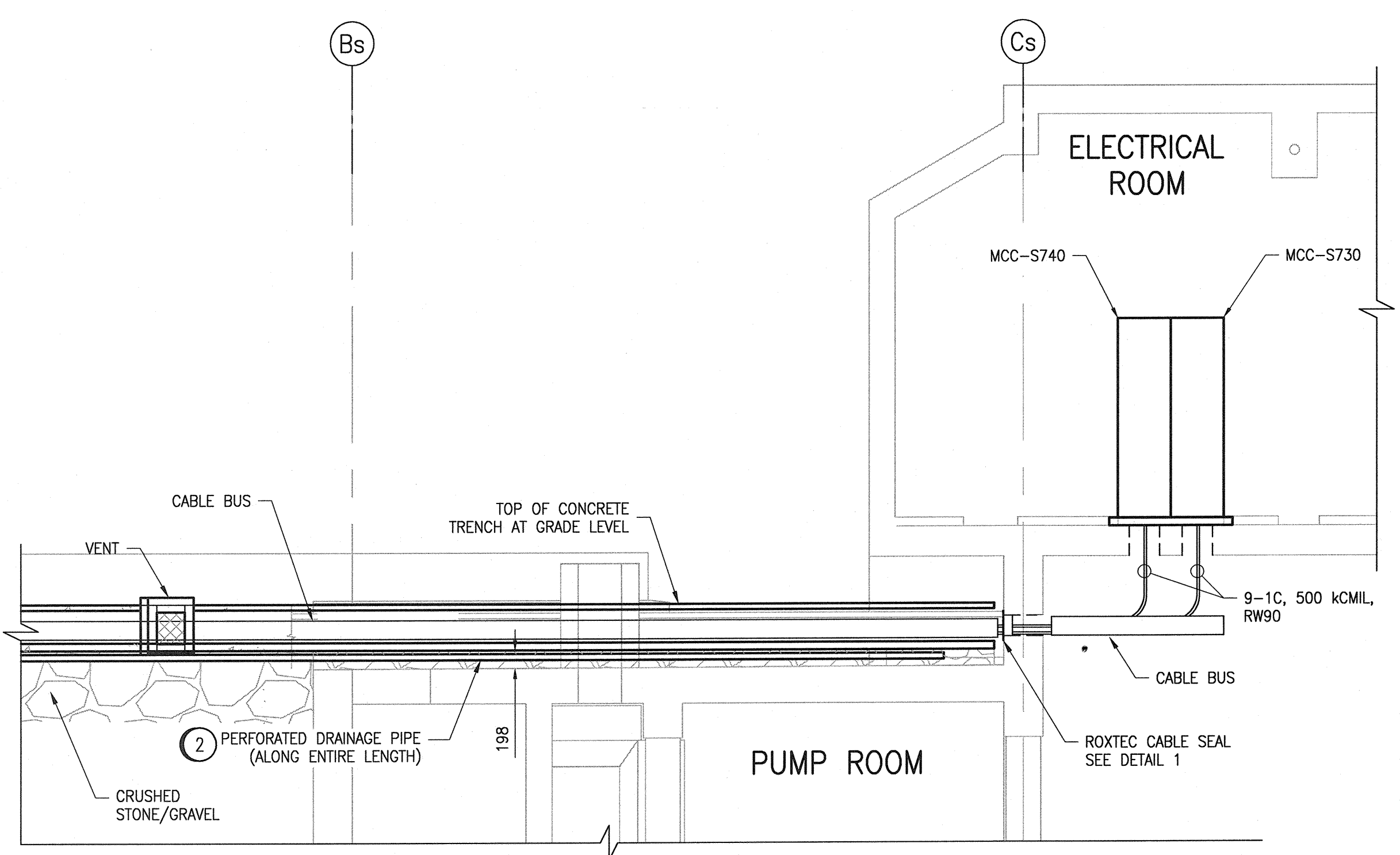


**B SECTION - CABLE BUS ENTRY TO XFMR**  
SCALE : NTS  
ECRT-S002

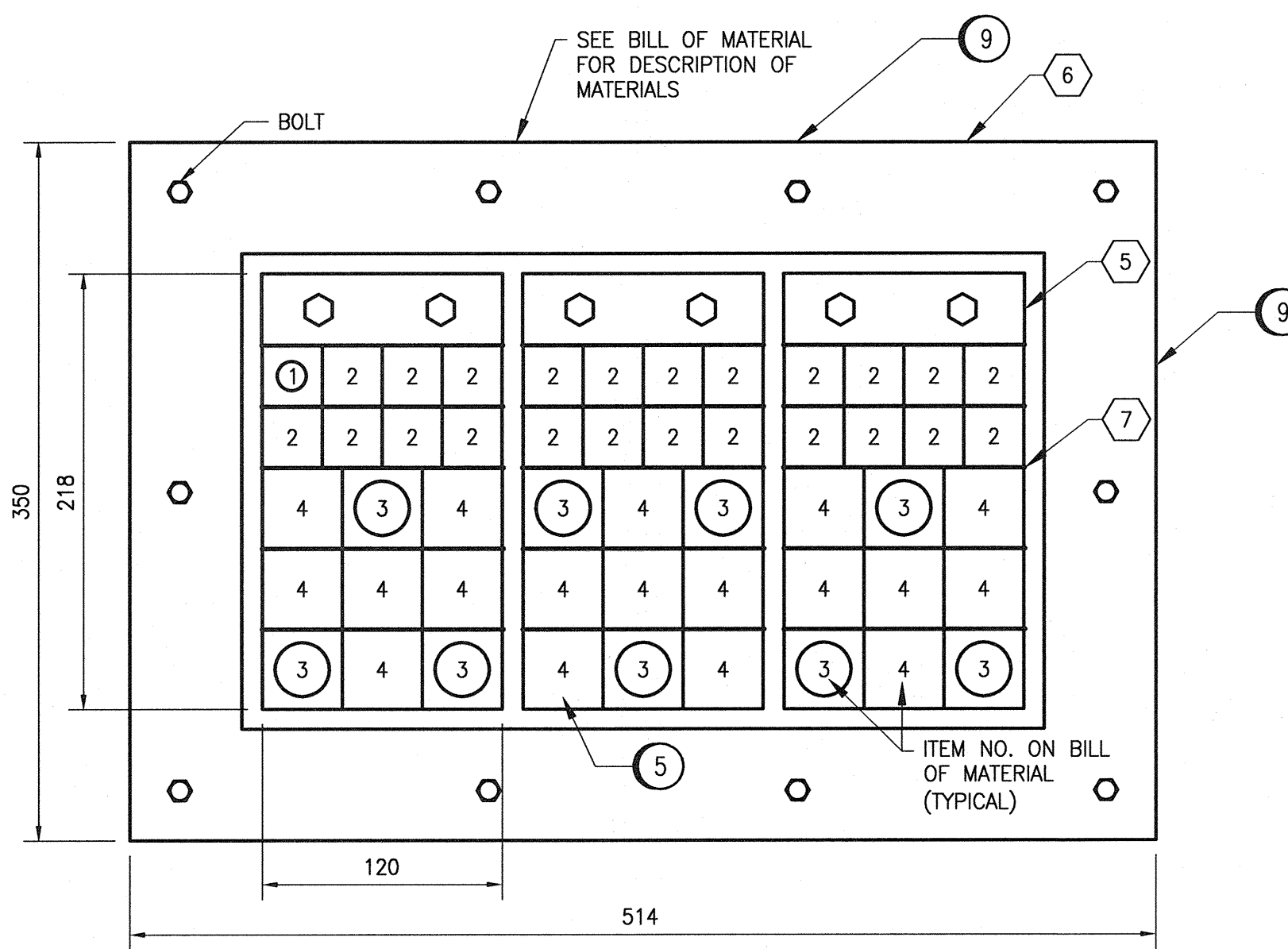
ROXTEC CABLE SEAL BILL OF MATERIAL				
ITEM	QTY	DESCRIPTION	MODEL	NOTES
1	1	SEALING MODULES, WITH CORE, RM 30	RM00100301000	1
2	23	SEALING MODULES, SOLID COMPENSATION, RM 30	RM00300301000	3
3	9	SEALING MODULES, WITH CORE, RM 40,	RM00100401000	2
4	18	SEALING MODULES, SOLID COMPENSATION, RM 40	RM00300401000	3
5	3	120 mm AISI 316 WEDGE	ARW0001201021	
6	1	GH 6x3 AISI 316 FRAME	5GH0000009292	
7	15	120 mm AISI 316 STAYPLATE	ASP0001200021	

**SPECIFIC NOTES:**  
 1. DESIGNATED FOR 1C, 250 MCM, BARE COPPER BONDING CONDUCTORS.  
 2. DESIGNATED FOR 9-1C, 500 MCM RW90 CONDUCTORS.  
 3. SPARE SEALING MODULES.  
 4. THE QUANTITY OF MATERIAL SHOWN IS FOR ONE (1) ROXTEC CABLE SEAL SYSTEM. THERE ARE TWO CABLE SEAL INSTALLED (FOR C-S730-2 & C-S740-2).

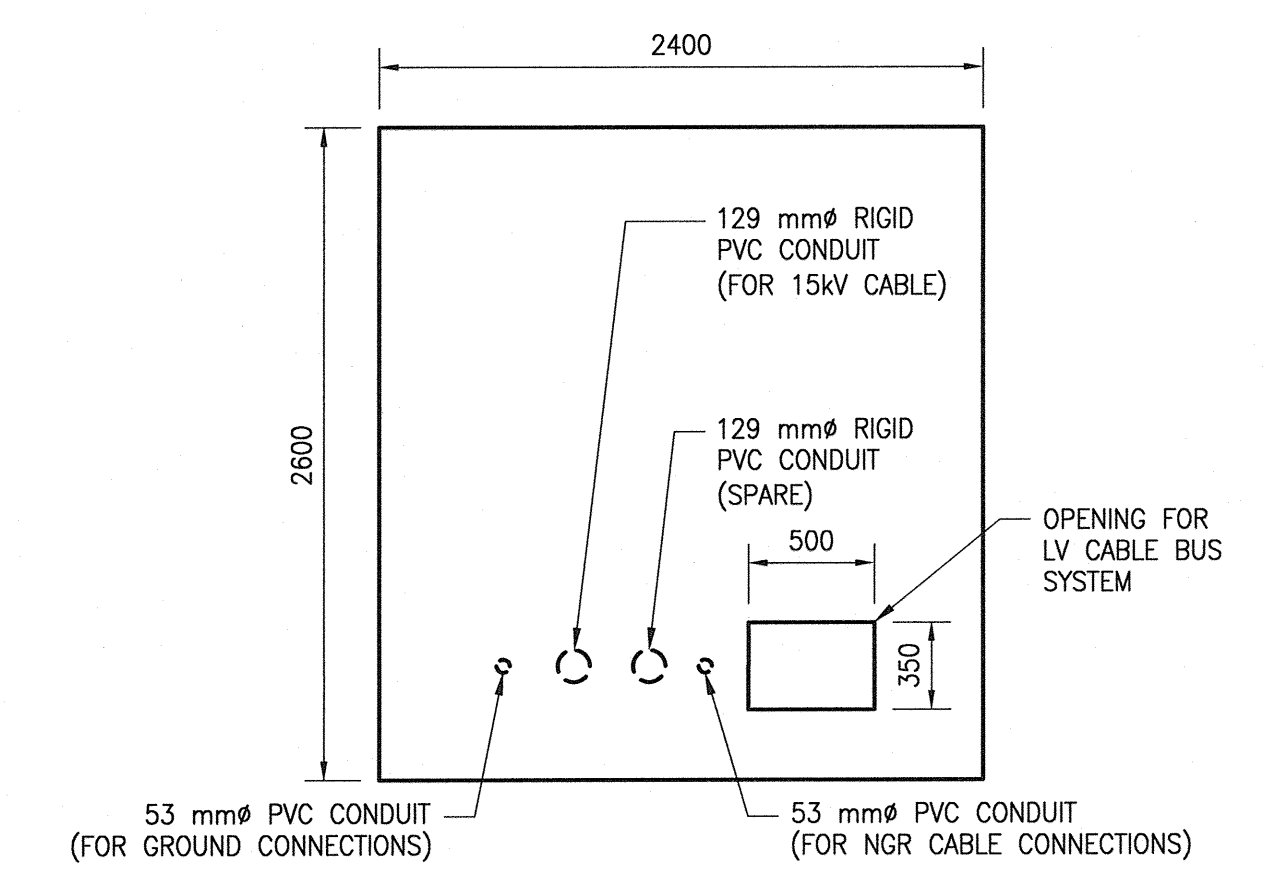
\* BILL OF MATERIALS SHOWN MAY NOT INCLUDE ALL ITEMS REQUIRED. CONTRACTOR TO PROVIDE A COMPLETE AND FUNCTIONING SYSTEM.



**C SECTION VIEW**  
SCALE : NTS  
ECRT-S002

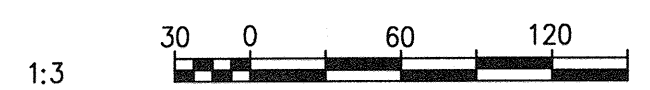


**DETAIL 1 - ROXTEC CABLE SEAL**  
SCALE : 1 : 3



**DETAIL 2 - XFMR CONCRETE PAD**  
SCALE : NTS

REFERENCE DRAWINGS	DESCRIPTION

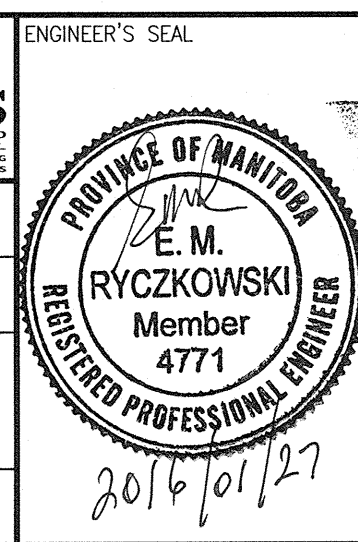


00	ISSUED FOR TENDER - B.O. 899-2015	01/2016	WE/DEB
NO.	REVISIONS	DATE	DESIGN/CHECK

**CH2MHILL**  
 SNC-Lavalin  
 DESIGNED BY: V. ELIMBAN  
 DRAWN BY: M.J. PERSSON  
 SCALE: AS SHOWN  
 DATE: 2015/11/24

CHECKED BY: D. BECKER  
 APPROVED BY: E. RYCZKOWSKI  
 ISSUED FOR CONSTRUCTION BY: T. TURZAK  
 DATE: 2016/01/29

CONSULTANT NO.: 474248



**THE CITY OF WINNIPEG**  
 WATER AND WASTE DEPARTMENT

SOUTH END WATER POLLUTION CONTROL CENTRE  
 SEMPCC UPGRADING/EXPANSION PROJECT  
 ELECTRICAL - CABLE ROUTING  
 SECONDARY CLARIFIERS 4 AND 5  
 CABLE BUS SYSTEM SECTIONS & DETAILS

CITY DRAWING NUMBER: 1-0102-ECRT-S003  
 SHEET: 001  
 REV: 00  
 SIZE: A1

LAST SAVE: 2016/01/27 - 11:02am  
 PATH: C:\pw\_work\ch2mhill\ch2mhill\_wbg\mp0006714\0356519\1-0102-ECRT-S003.dwg