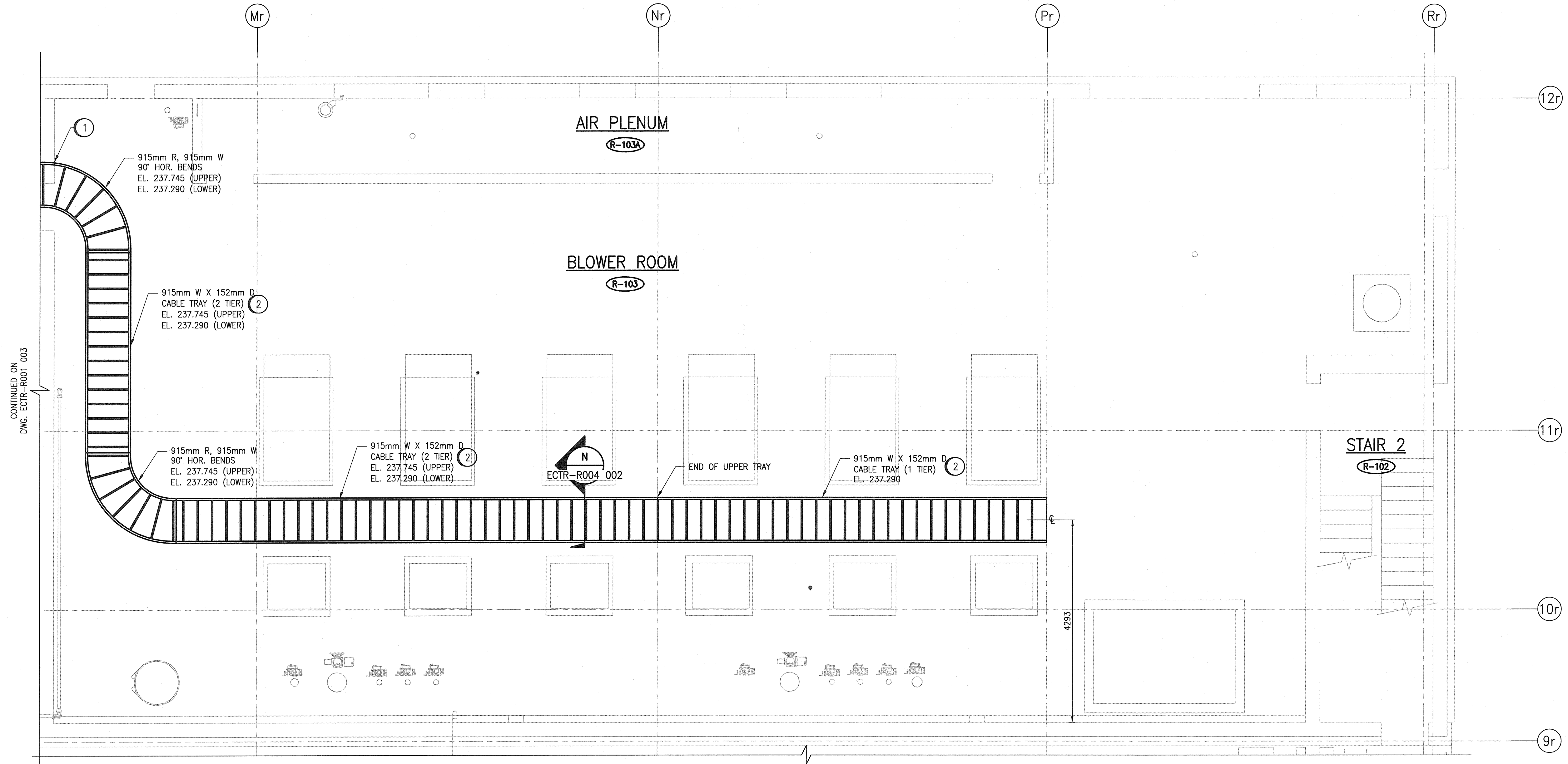
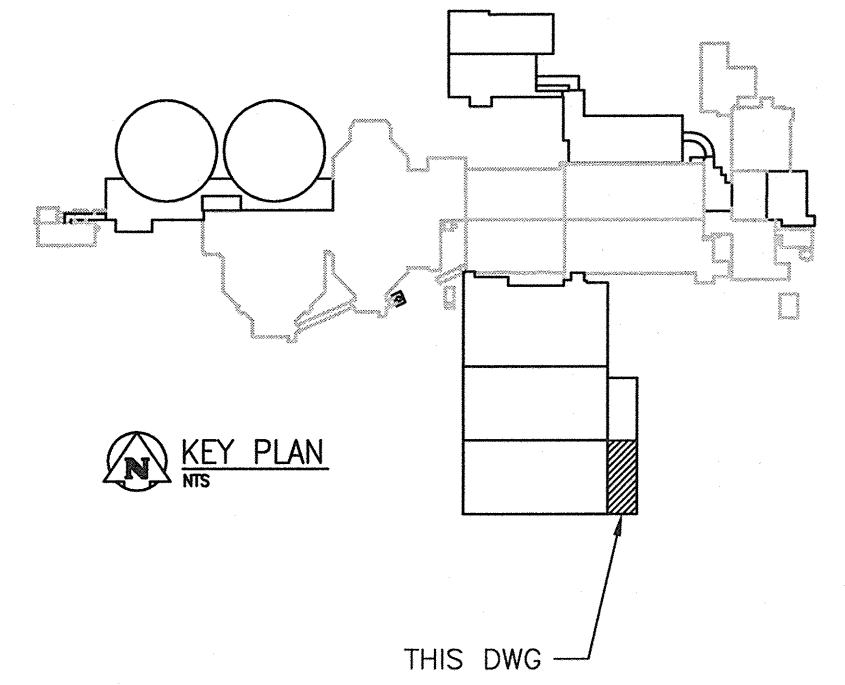


**GENERAL NOTES:**

1. REFER TO DWG. 1-0102-ECTR-R001 001 FOR GENERAL NOTES.
2. NOT ALL CABLE TRAYS ARE SHOWN ON THIS DRAWING FOR CLARITY. REFER TO DWG. ECTR-R001 002 FOR ADDITIONAL CABLE TRAY LAYOUT.

**SPECIFIC NOTES:**

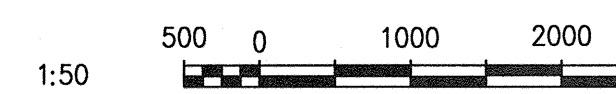
- 1 PROVIDE FIRE RATED ASSEMBLY AND SEAL ALL CABLES PENETRATING THE WALL / FLOOR TO SEPARATE THE AREAS.
- 2 CABLE TRAY DEDICATED ONLY FOR MAIN POWER CABLES TO AIR BLOWER AUTO-TRANSFORMERS.



**PARTIAL GROUND FLOOR PLAN**

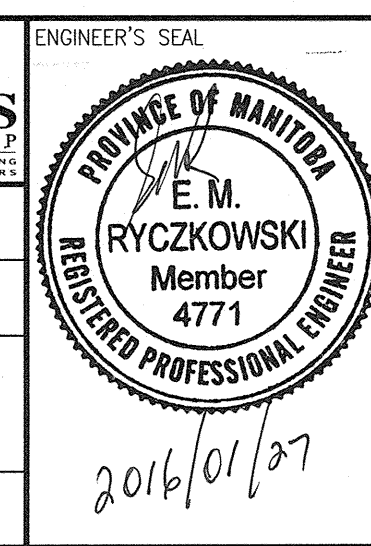
SCALE: 1 : 50

1-0102-ECTR-R004	CABLE TRAY DETAILS
REFERENCE DRAWINGS	DESCRIPTION



NO.	REVISIONS	DATE	DESIGN	CHECK
00	ISSUED FOR TENDER - B.O. 899-2015	01/2016	SLJ	DEB

<b>CH2MHILL.</b>	
DESIGNED BY: S. JUGANAS	CHECKED BY: D. BECKER
DRAWN BY: S. JUGANAS	APPROVED BY: E. RYCKOWSKI
SCALE: 1:50	ISSUED FOR CONSTRUCTION BY: T. TURZAK
DATE: 2015/11/09	DATE: 2016/01/29
CONSULTANT NO.: 474248	



<b>THE CITY OF WINNIPEG</b> Winnipeg WATER AND WASTE DEPARTMENT	
SOUTH END WATER POLLUTION CONTROL CENTRE SEMPCC UPGRADING/EXPANSION PROJECT ELECTRICAL - CABLE TRAY LAYOUT BIOREACTORS/BLOWER BUILDING GROUND FLOOR PLAN	
CITY DRAWING NUMBER 1-0102-ECTR-R001	SHEET 004
REV. 00	SIZE A1