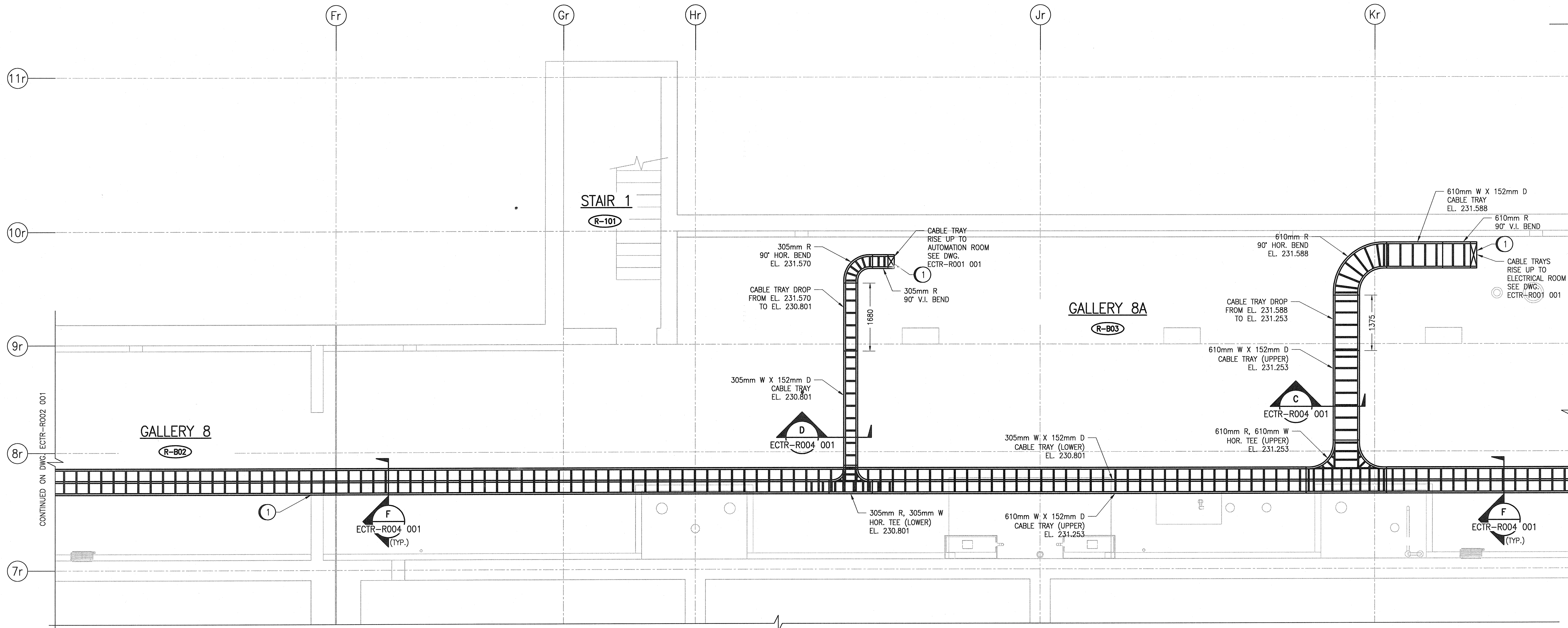
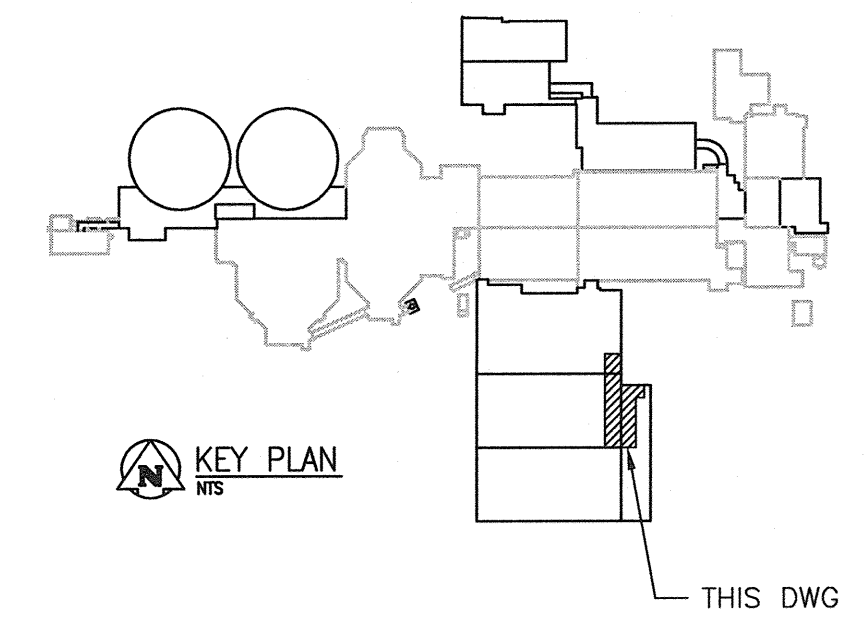


GENERAL NOTES:

- 1. REFER TO DWG. ECTR-R001 001 FOR GENERAL NOTES.

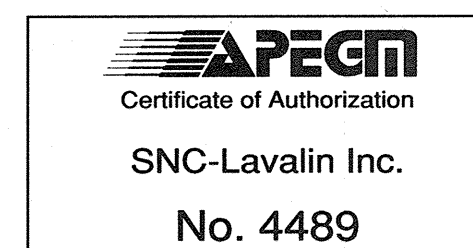
SPECIFIC NOTES:

- 1 PROVIDE FIRE RATED ASSEMBLY AND SEAL ALL CABLES PENETRATING THE WALL / FLOOR TO SEPARATE THE AREAS.



PARTIAL BASEMENT PLAN
SCALE: 1 : 50

| | |
|--------------------|----------------------|
| 1-0102-ECTR-R004 | SECTIONS AND DETAILS |
| REFERENCE DRAWINGS | DESCRIPTION |



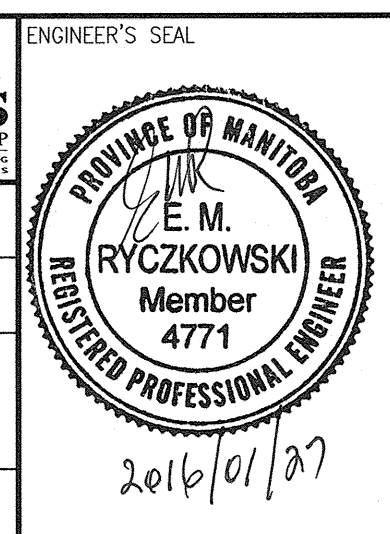
| | | | | |
|-----|-----------------------------------|---------|--------|-------|
| 00 | ISSUED FOR TENDER - B.O. 899-2015 | 01/2016 | SLJ | DEB |
| NO. | REVISIONS | DATE | DESIGN | CHECK |

CH2MHILL.
SNC-Lavalin

DESIGNED BY: S. JUGANAS
DRAWN BY: S. JUGANAS
SCALE: 1:50
DATE: 2015/10/01

CHECKED BY: D. BECKER
APPROVED BY: E. RYCZKOWSKI
FOR CONSTRUCTION BY: T. TURZAK
DATE: 2016/01/29

CONSULTANT NO.: 474248



THE CITY OF WINNIPEG
WATER AND WASTE DEPARTMENT

SOUTH END WATER POLLUTION CONTROL CENTRE
SEWPCC UPGRADING/EXPANSION PROJECT
ELECTRICAL - CABLE TRAY LAYOUT
BIOREACTORS/BLOWER BUILDING
BASEMENT PLAN

CITY DRAWING NUMBER: 1-0102-ECTR-R002
SHEET: 002
REV.: 00
SIZE: A1