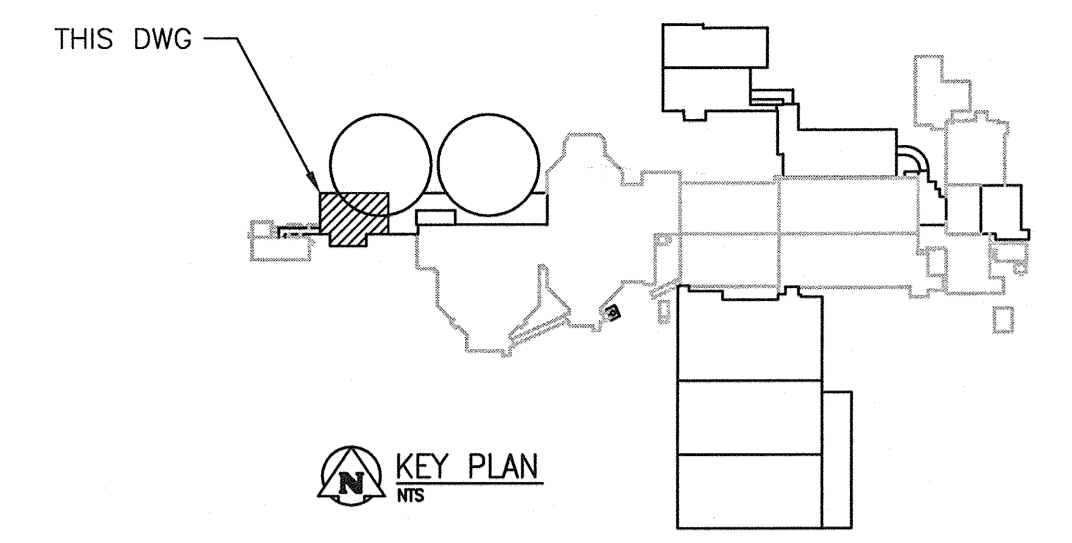
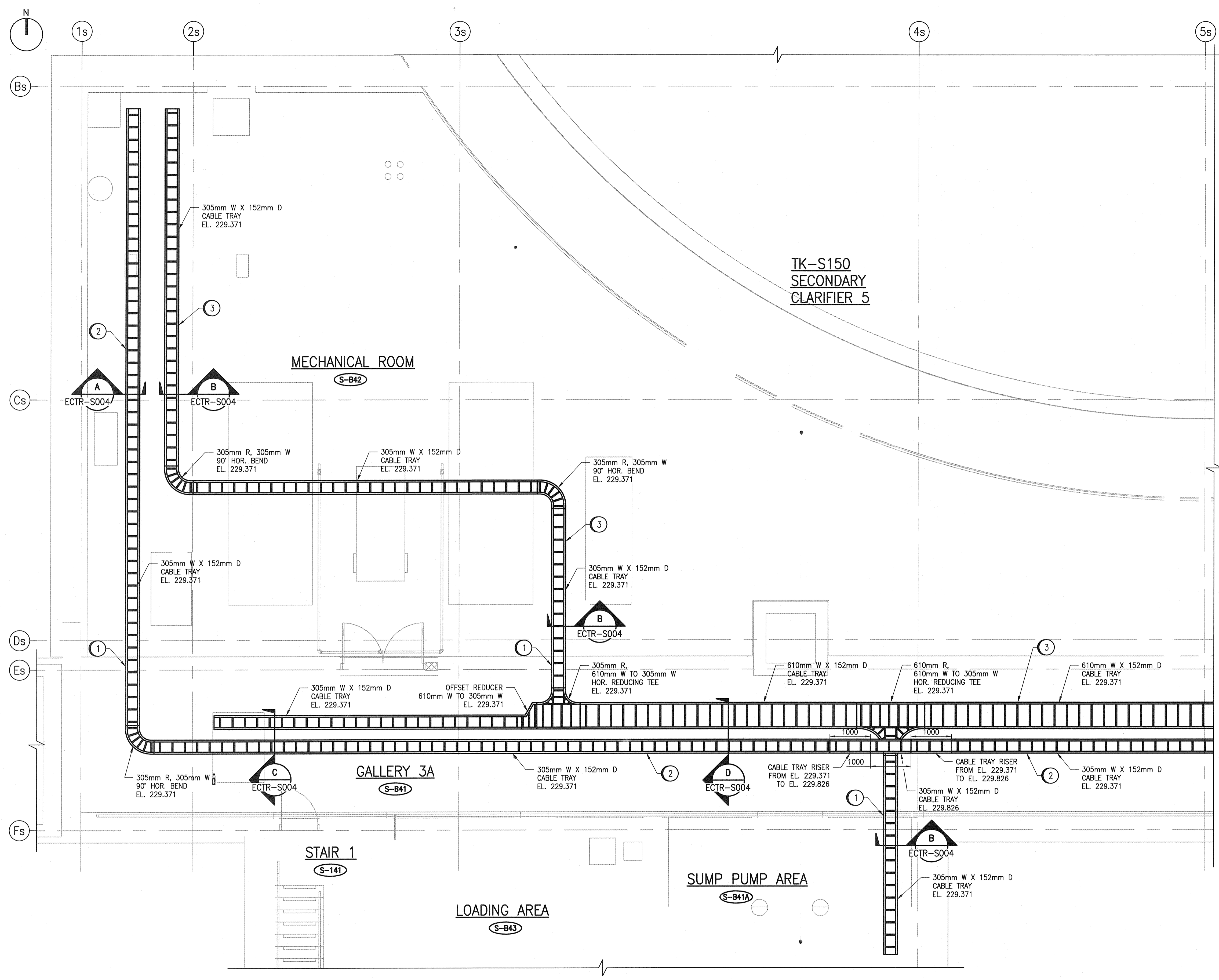


A1 SIZE - 594mm x 841mm



GENERAL NOTES:

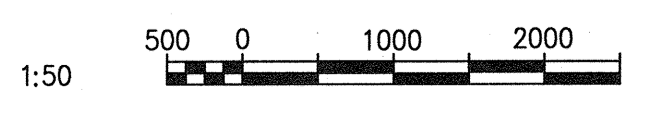
1. INSTALL THE CABLE TRAY IN ACCORDANCE WITH THE MANUFACTURER'S RECOMMENDATION AND IN ACCORDANCE WITH NEMA VEZ.
2. CABLE TRAY ELEVATIONS ARE MEASURED FROM THE BOTTOM OF THE CABLE TRAY.
3. CABLE TRAY SHALL BE ALUMINUM, HEAVY DUTY, CSA CLASS C1, 229mm RUNG SPACING, 152mm SIDE RAIL. STANDARD COMPONENTS, FACTORY MADE TEES, CROSSES, REDUCERS, EXPANSION JOINTS, COVERS AND ELBOWS. USE ACCESSORIES FROM SAME MANUFACTURER.
4. INSTALL CABLE TRAYS WITHOUT KINKS AND SAGS, COMPLETE WITH SUPPORTS, BRACKETS, AND HARDWARE. PROVIDE A COMPLETE, RIGID AND CONTINUOUS INSTALLATION.
5. NOT ALL REQUIRED TRAY BENDS, FITTINGS, ETC. ARE SHOWN. PROVIDE THESE AS REQUIRED TO SUIT THE EXACT INSTALLATION.
6. SUPPORT TRAYS FROM STRUCTURAL MEMBERS OF THE BUILDING ONLY, SUCH MEMBERS INCLUDE COLUMNS, BEAMS AND MASONRY. INSTALL TRAY SUPPORTS AT SPACING OF NOT MORE THAN 2500mm ON CENTRE FOR HORIZONTAL RUNS AND NOT MORE THAN 1800mm ON CENTRE FOR VERTICAL RUNS.
7. ENSURE THAT BOLTED CONNECTIONS ARE TIGHT, THAT TRAYS ARE FREE OF BURRS, SHARP CORNERS AND OTHER PROJECTIONS, WHICH MIGHT DAMAGE CABLE JACKETS.
8. PROVIDE #2/0 AWG GREEN INSULATED BONDING CONDUCTOR ALONG THE ENTIRE LENGTH OF TRAY, CONNECTED TO ALL MEMBERS WITH BONDING CLAMPS.
9. ONLY MAIN CABLE TRAY RUNS ARE SHOWN. THE CONTRACTOR SHALL PROVIDE CABLE CHANNEL WHERE MOTORS AND/OR EQUIPMENT ARE LOCATED AWAY FROM THE MAIN CABLE TRAY.
10. PROVIDE VERTICAL UNISTRUT SUPPORTS ANCHORED TO THE CEILING STRUCTURE AND THE FLOOR FOR CABLES RUN VERTICALLY DOWN FROM THE CABLE TRAY SYSTEM TO THE EQUIPMENT BELOW.
11. REFER TO STRUCTURAL DRAWINGS FOR BUILDING EXPANSION JOINTS. PROVIDE EXPANSION COUPLINGS AND FITTINGS FOR ALL CABLE TRAY CROSSING JOINTS.

SPECIFIC NOTES:

- 1 PROVIDE FIRE RATED ASSEMBLY AND SEAL ALL CABLES PENETRATING THE WALL OR FLOOR TO SEPARATE THE AREAS.
- 2 CABLE TRAY DEDICATED FOR CONTROL AND INSTRUMENTATION CABLES.
- 3 CABLE TRAY DEDICATED FOR MISCELLANEOUS 600VAC AND 120VAC POWER CABLES.

CONTINUED ON DWG. ECTR-S002 002

PARTIAL BASEMENT PLAN
SCALE: 1 : 50

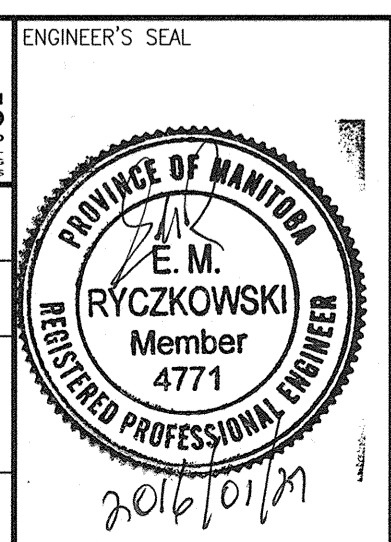


NO.	REVISIONS	DATE	DESIGN	CHECK
00	ISSUED FOR TENDER - B.O. 899-2015	01/2016	SLJ	DEB

CH2MHILL.
SNC-LAVALIN
DESIGNED BY: S. JUGANAS
DRAWN BY: M.J. PERSSON
SCALE: 1:50
DATE: 2015/10/26

KGS GROUP
CHECKED BY: D. BECKER
APPROVED BY: E. RYCZKOWSKI
BY: T. TURZAK
DATE: 2016/01/29

CONSULTANT NO.: 474248



THE CITY OF WINNIPEG
WATER AND WASTE DEPARTMENT

SOUTH END WATER POLLUTION CONTROL CENTRE
SEWPCC UPGRADING/EXPANSION PROJECT
ELECTRICAL - CABLE TRAY LAYOUT
SECONDARY CLARIFIERS 4 AND 5
BASEMENT PLAN

CITY DRAWING NUMBER: 1-0102-ECTR-S002
SHEET: 001
REV: 00
SIZE: A1

1-0102-ECTR-S004	SECTIONS AND DETAILS
REFERENCE DRAWINGS	DESCRIPTION

LAST SAVE: 2016/01/27 - 11:06am
PATH: C:\p_w\workdir\ch2mhill_wbg\mp0006714\0358519\1-0102-ECTR-S002-001.dwg