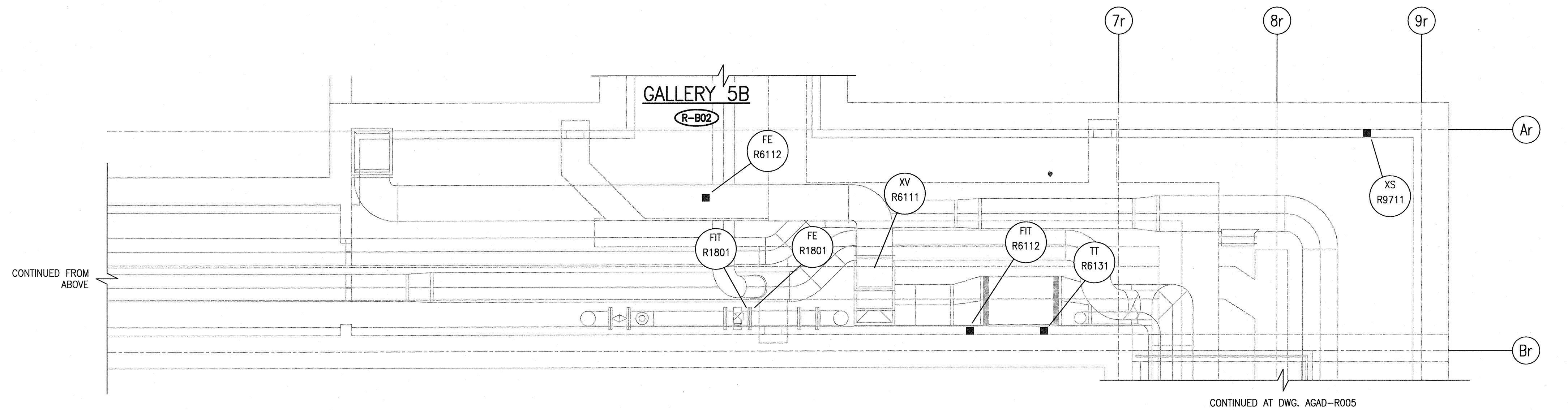


SPECIFIC NOTES:

- ① SEE DWG. ADTL-R003 DETAIL A FOR INSTALLATION DETAILS.
- ② RUN WIRES IN CONDUIT FOR DEVICE FROM FERMENTERS ELECTRICAL ROOM IN AREA D.

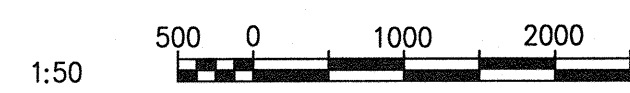


SUMP PUMP ROOM & GALLERY 5B LAYOUT
1 : 50

CONTINUED FROM ABOVE

CONTINUED BELOW

CONTINUED AT DWG. AGAD-R005

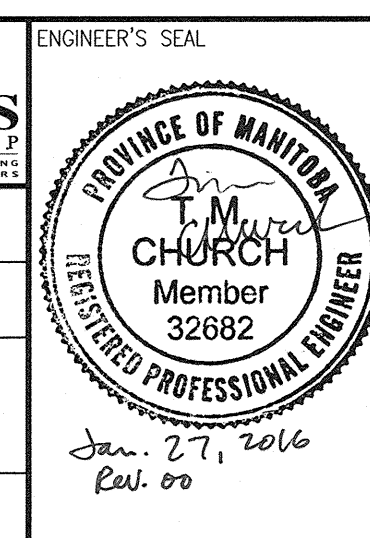


DESIGNED BY: M. WANG	CHECKED BY: T. CHURCH
DRAWN BY: M. WANG	APPROVED BY: T. CHURCH
SCALE: 1:50	ISSUED FOR CONSTRUCTION BY: T. TURZAK
DATE: 2015/11/27	DATE: 2016/01/29
CONSULTANT NO.: 474248	

CH2MHILL
SNC-LAVALIN

KGS
G.R.O. U.P.
CONSULTANTS

ENGINEER'S SEAL
T. CHURCH
Member
32682
Jan 27, 2016
Eui oo



THE CITY OF WINNIPEG
WATER AND WASTE DEPARTMENT

SOUTH END WATER POLLUTION CONTROL CENTRE
SEWPPC UPGRADING/EXPANSION PROJECT
AUTOMATION - INSTRUMENT LOCATION PLAN
BIOREACTORS/BLOWER BUILDING
SUMP PUMP ROOM AND GALLERY 5B LAYOUT

CITY DRAWING NUMBER: **1-0102-AGAD-R004** SHEET: **001** REV: **00** SIZE: **A1**

REFERENCE DRAWINGS	DESCRIPTION