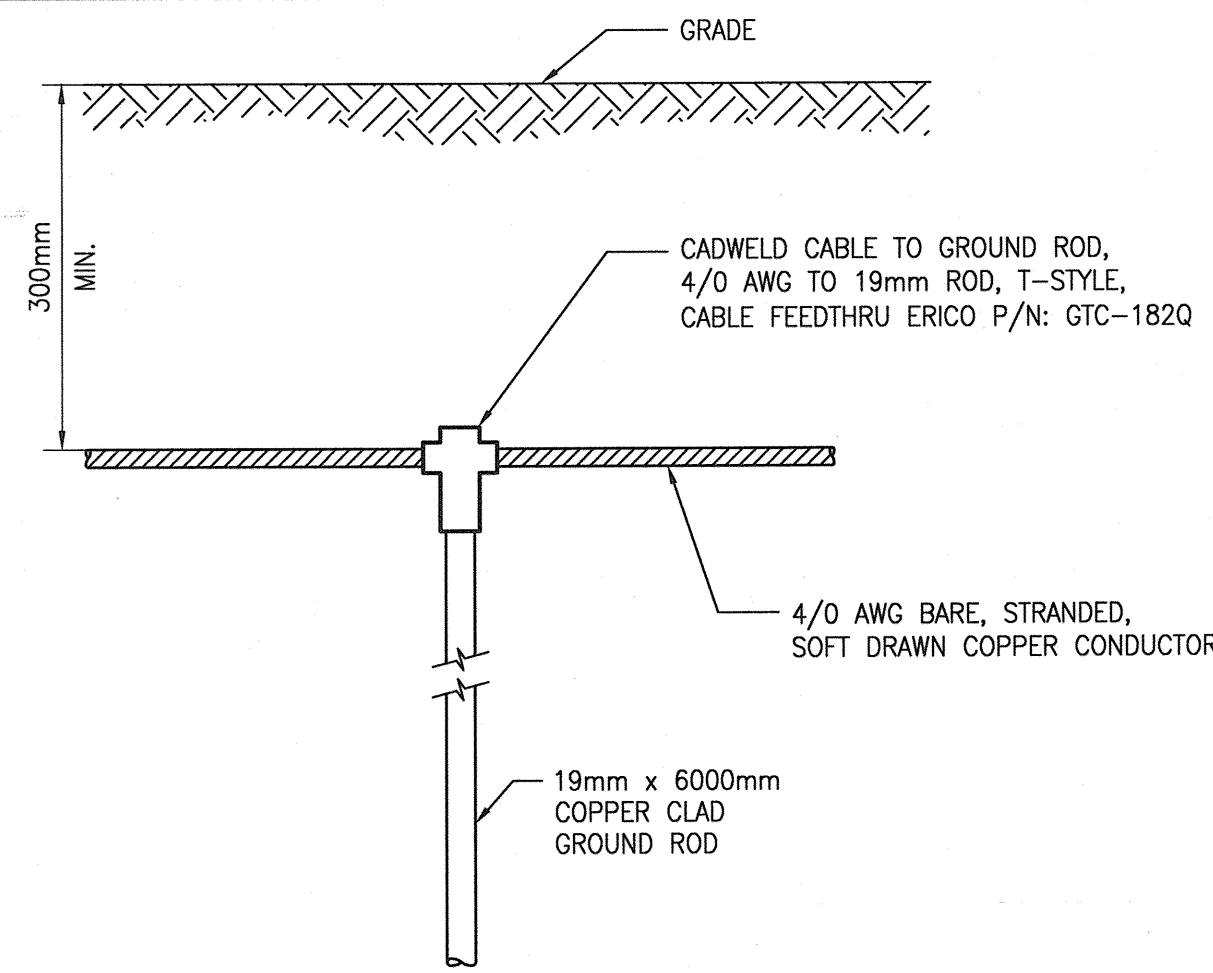
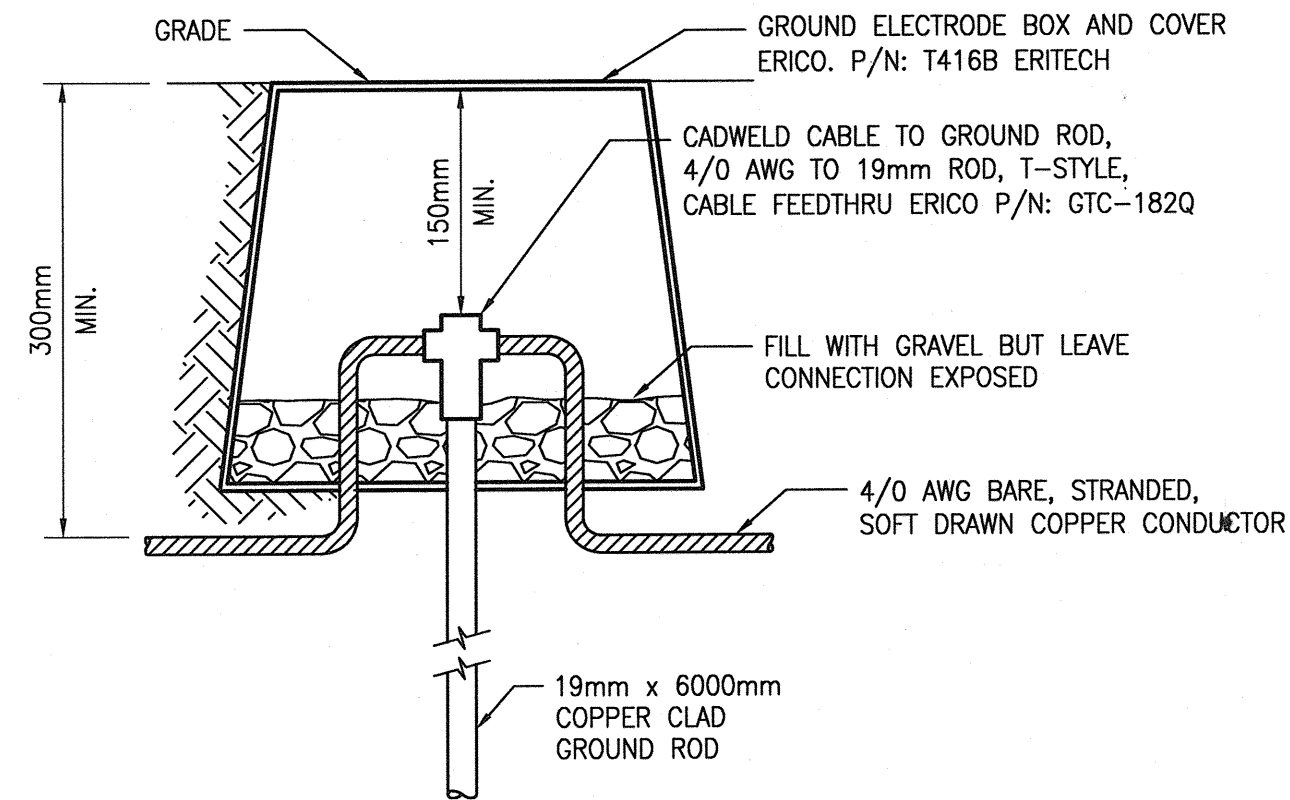


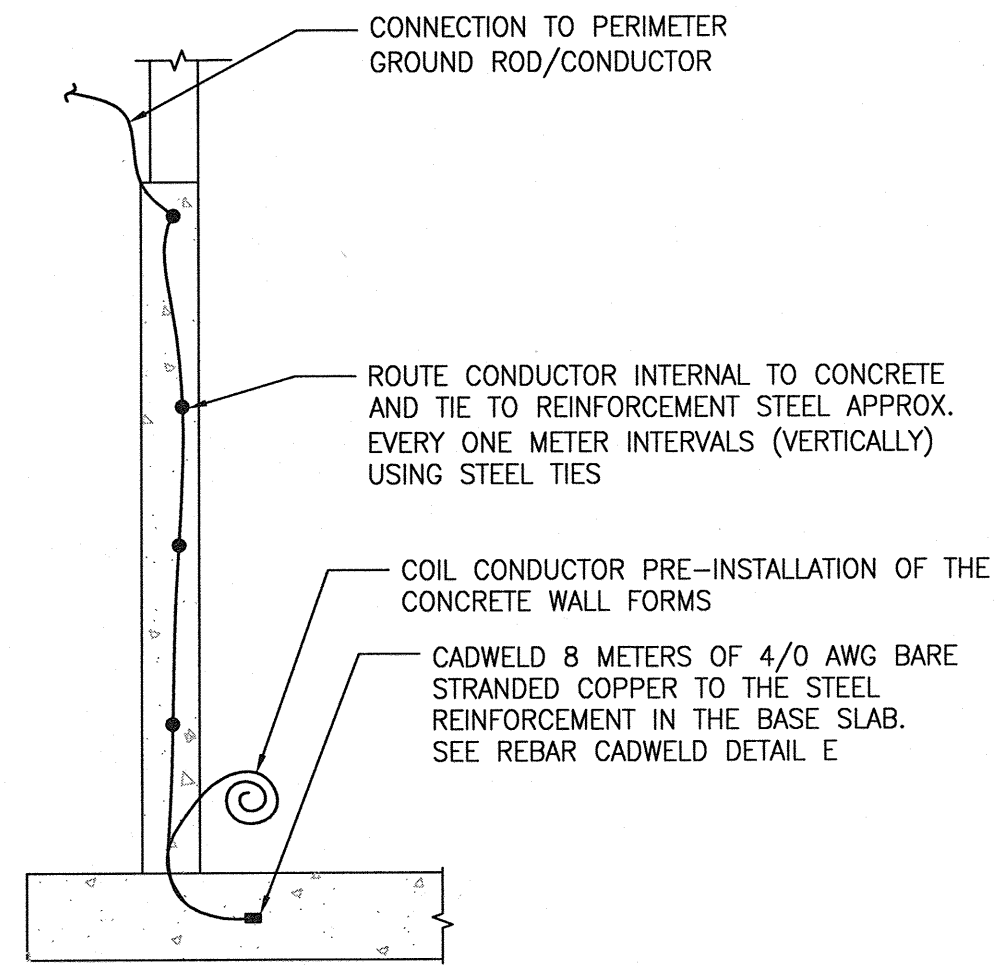
A1 SIZE - 594mm x 841mm



A GROUND ROD ASSEMBLY
SCALE: NTS



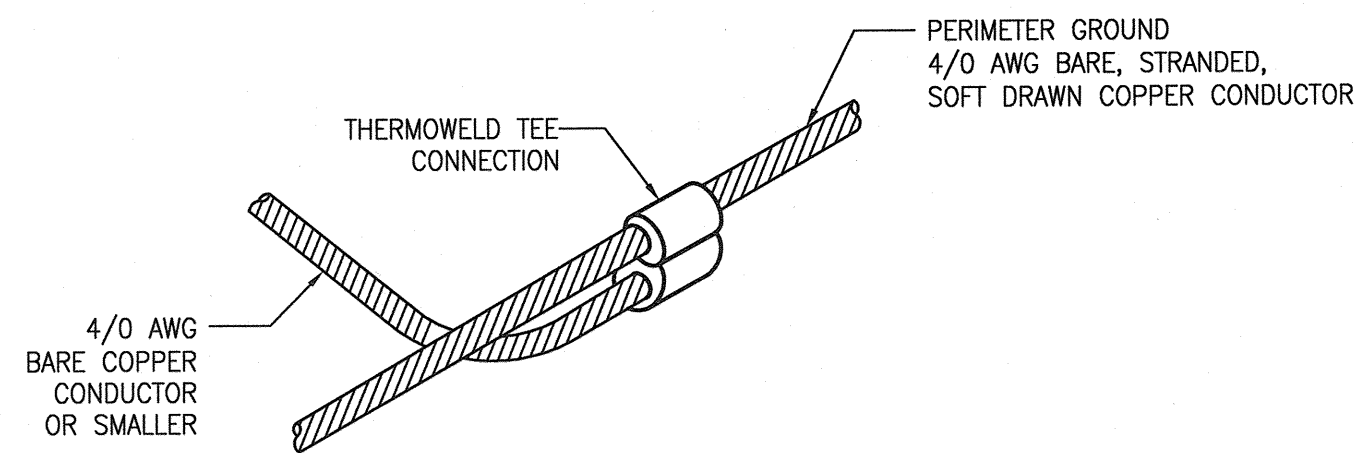
B GROUND ROD WITH GROUND WELL
SCALE: NTS



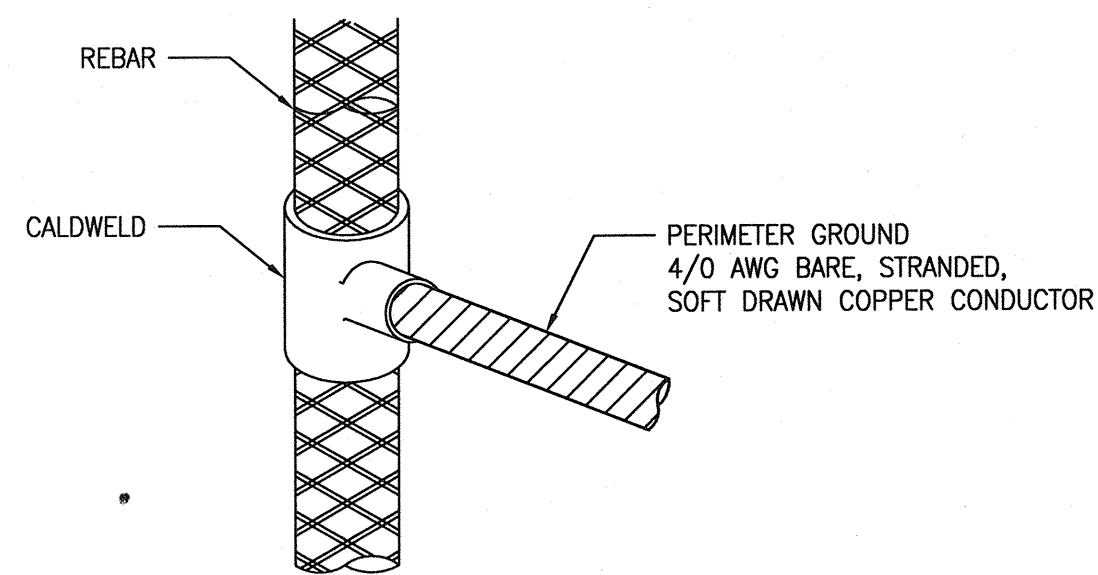
C UFER GROUND
SCALE: NTS

GENERAL NOTES:

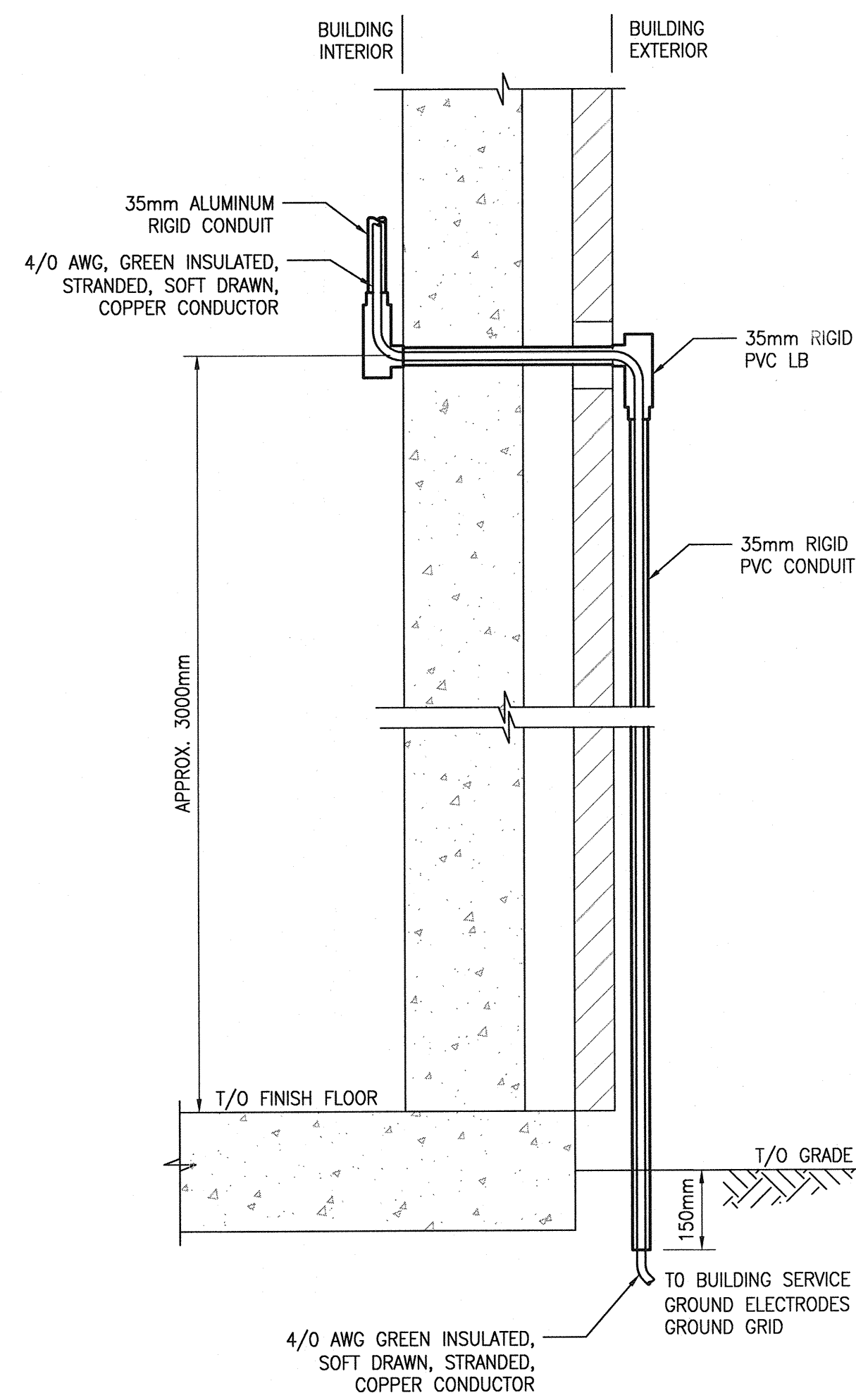
1. ALL PVC CONDUIT TO BE RIGID TYPE.
2. ALL METALLIC CONDUIT TO BE RIGID, THREADED, ALUMINUM.
3. ALL SLACK CONDUCTOR LENGTHS TO ALLOW FOR FROST HEAVING AT INTERVALS WHERE GROUND CONDUCTORS ARE AFFIXED TO FACILITY STRUCTURES.
4. ALL CONDUIT ROUTING SHALL BE APPROPRIATELY SUPPORTED.
5. PROVIDE WEATHERPROOF SEAL USING NON SHRINK GROUT OR SUITABLE EQUIVALENT TO ALL CONDUIT PENETRATIONS INTO THE BUILDING.



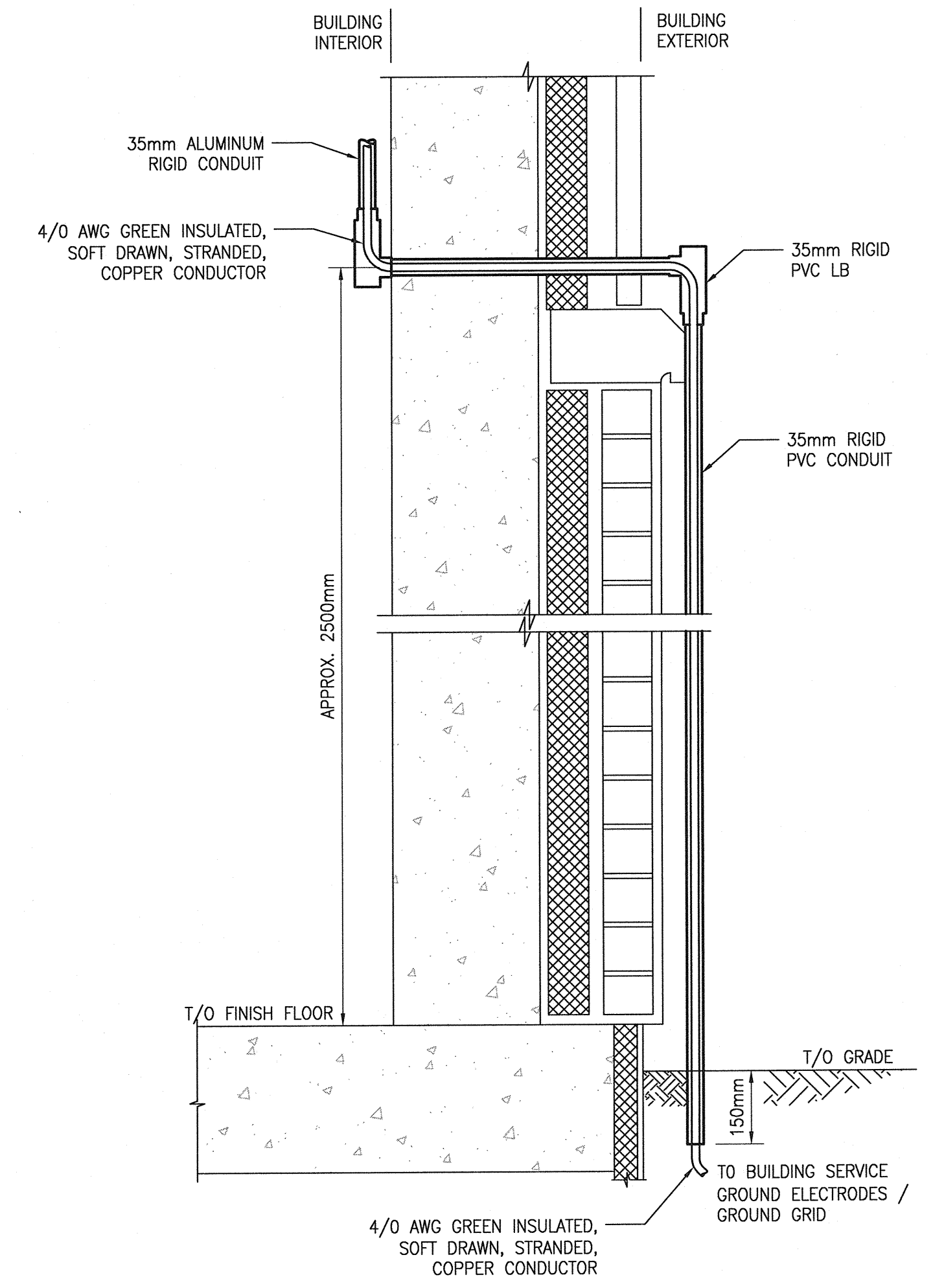
D GROUND CONDUCTOR TEE - BURIED
SCALE: NTS



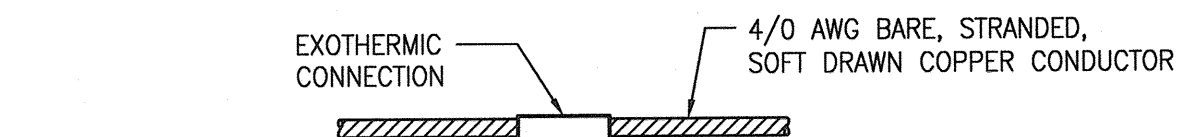
E REBAR CADWELD
SCALE: NTS



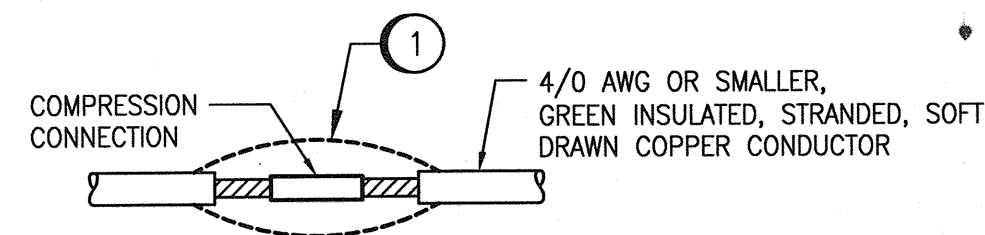
H BUILDING ENTRY ABOVE GROUND
SCALE: NTS



J BUILDING ENTRY ABOVE GROUND
SCALE: NTS



F GROUND CONDUCTOR SPLICE - BURIED
SCALE: NTS



G GROUND CONDUCTOR SPLICE - INDOORS
SCALE: NTS

SPECIFIC NOTES:

1. COVER ENTIRE BARE COPPER AREA WITH TWO WRAPS OF SELF-ANNEALING ELECTRICAL TAPE. COVER WITH ONE LAYER OF GREEN ELECTRICAL TAPE.



NO.	ISSUED FOR TENDER - B.O. 899-2015	01/2016	SJ	DEB
NO.	REVISIONS	DATE	DESIGN	CHECK

CH2MHILL		KGS GROUP	
SNC-LAVALIN		ENGINEER'S SEAL	
DESIGNED BY: S. JUGANAS	CHECKED BY: D. BECKER		
DRAWN BY: S. JUGANAS	APPROVED BY: E. RYCZKOWSKI		
SCALE: NTS	ISSUED FOR CONSTRUCTION BY: T. TURZAK		
DATE: 2015/10/21	DATE: 2016/01/29		
CONSULTANT NO.: 474248			

SOUTH END WATER POLLUTION CONTROL CENTRE SEWPPCC UPGRADING/EXPANSION PROJECT ELECTRICAL GROUNDING DETAILS			
CITY DRAWING NUMBER	SHEET	REV.	SIZE
1-0102-EGRD-A003	001	00	A1

LAST SAVE: 2016/01/27 - 10:56am
PATH: C:\pwworkdir\ch2mhill\wg\mp006714_40355952\1-0102-EGRD-A003.dwg

REFERENCE DRAWINGS	DESCRIPTION