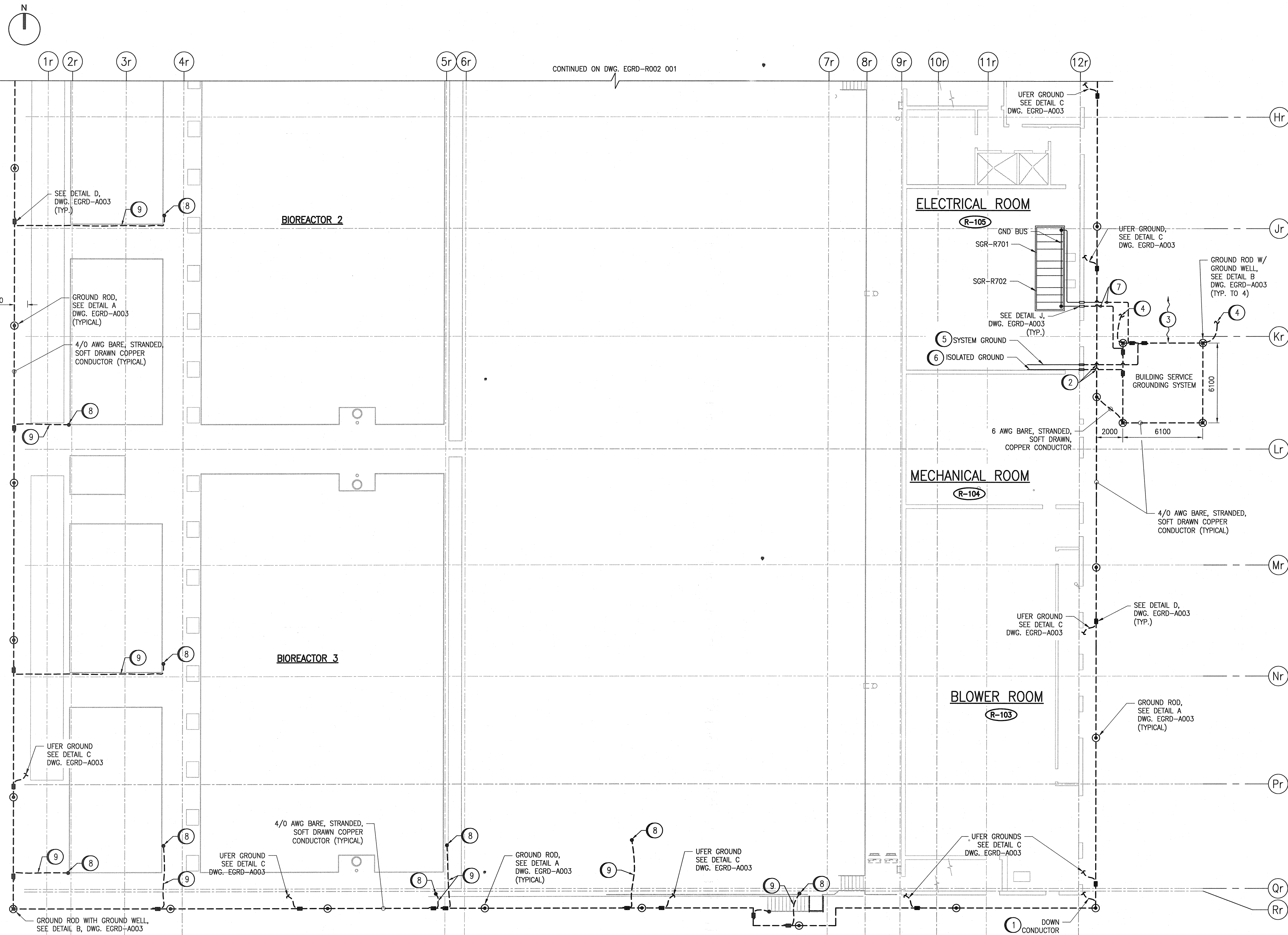
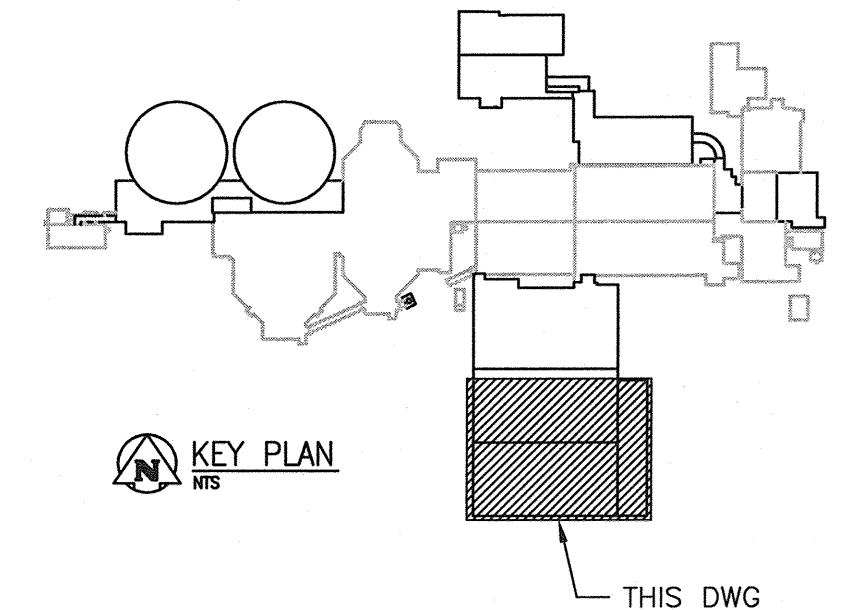


AI SIZE = 594mm x 841mm

LAST SAVE: 2016/01/27 - 1:21pm
PATH: C:\p_wor\ch2mhill\wg\mp006714\0102-EGRD-R002-002.dwg



CONTINUED ON DWG. EGRD-R002 001



- GENERAL NOTES:**
- REFER TO DWG. 1-0102-EGRD-R002 001 FOR GROUNDING LEGEND AND GENERAL NOTES.
- SPECIFIC NOTES:**
- PROVIDE DOWN CONDUCTORS FROM ROOF FOR LIGHTNING PROTECTION SYSTEM.
 - ISOLATED GROUND AND SYSTEM GROUND CONDUCTORS SHALL BE SEPARATED (NOT TOUCHING) FROM THE PERIMETER GROUNDING CONDUCTOR AT THIS POINT. PROVIDE 1000mm, BURIED, RIGID PVC CONDUIT SLEEVES AT CROSSING POINT.
 - SEPARATE BUILDING SERVICE GROUNDING SYSTEM FROM TRANSFORMER GROUND ELECTRODES / GROUND GRID BY A MINIMUM OF 3000mm. REFER TO DWG 1-0102-ECRT-R001 001.
 - CONNECT BUILDING SERVICE GROUNDING SYSTEM TO TRANSFORMER GROUND ELECTRODES / GROUND GRID (USING 4/0 AWG, BARE, STRANDED SOFT DRAWN COPPER CONDUCTOR). REFER TO DRAWING 1-0102-ECRT-R001 001.
 - SYSTEM GROUND TO BE ROUTED ON THE WALL AT APPROXIMATELY 2700mm ABOVE FLOOR. CONDUCTOR TO BE 4/0 AWG GREEN INSULATED, STRANDED, SOFT DRAWN COPPER. FOR DETAILS AND GROUNDING CONNECTION TO EQUIPMENT, REFER TO DWG. 1-0102-EGRD-R001.
 - ISOLATED GROUND TO BE ROUTED ON THE WALL AT APPROXIMATELY 3000mm ABOVE FLOOR. CONDUCTOR TO BE 4/0 AWG GREEN/YELLOW STRIPES INSULATED, STRANDED, SOFT DRAWN COPPER. FOR DETAILS AND GROUNDING CONNECTION TO EQUIPMENT, REFER TO DWG. 1-0102-EGRD-R001.
 - CONNECT THE SWITCHGEAR GROUND BUS TO THE BUILDING SERVICE GROUNDING SYSTEM. PROVIDE 4/0 AWG GREEN INSULATED, STRANDED, SOFT DRAWN COPPER CONDUCTOR RUN IN 35mm ϕ RIGID ALUMINUM CONDUIT (FOR INTERIOR ROUTING) AND TRANSITION TO RIGID PVC CONDUIT (FOR EXTERIOR ABOVE GRADE ROUTING). PROVIDE 1000mm, BURIED, RIGID PVC CONDUIT SLEEVES AT CROSSING POINT.
 - APPROXIMATE LOCATION OF CONNECTION POINT TO PIPE/CABLE TRAY STRUCTURAL STEEL SUPPORT COLUMNS.
 - PROVIDE 4/0 AWG BARE STRANDED COPPER CONDUCTOR ROUTED INTERNAL TO CONCRETE. PROVIDE AT LEAST 1000mm SLACK ABOVE THE CONCRETE SLAB FOR CONNECTION TO PIPE/CABLE TRAY STRUCTURAL STEEL SUPPORTS.

PARTIAL UPPER LEVEL/GROUND FLOOR PLAN
1 : 150



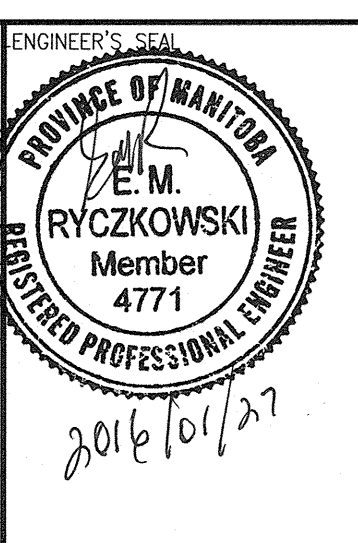
00	ISSUED FOR TENDER	01/2016	SLJ	DEB
NO.	REVISIONS	DATE	DESIGN	CHECK

CH2MHILL

SNC-Lavalin
DESIGNED BY: S. JUGANAS
DRAWN BY: S. JUGANAS
SCALE: 1:150
DATE: 2015/09/22

CHECKED BY: D. BECKER
APPROVED BY: E. RYCZKOWSKI
BY: T. TURZAK
DATE: 2016/01/29

CONSULTANT NO.: 474248



THE CITY OF WINNIPEG
WATER AND WASTE DEPARTMENT

SOUTH END WATER POLLUTION CONTROL CENTRE
SEWPPC UPGRADING/EXPANSION PROJECT
ELECTRICAL - GROUNDING LAYOUT
BIOREACTORS/BLOWER BUILDING
UPPER LEVEL/GROUND FLOOR PLAN

CITY DRAWING NUMBER: 1-0102-EGRD-R002
SHEET: 002
REV.: 00
SIZE: A1

1-0102-EGRD-A003	GROUNDING DETAILS
REFERENCE DRAWINGS	DESCRIPTION