

100-RW-C101  
FROM ABOVE AND  
PENETRATE EXTERIOR  
WALL AT 300mm AFF  
c/w DISCHARGE NOZZLE

MATCH LINE, SEE DWG. MGAD-R507

100-D-C101  
INV EL 231.490  
RUNNING TRAP  
INV 231.110  
FCO-1  
FCO-1  
FCO-1  
FCO-1  
100-D-C101  
INV EL 231.476  
50-VTA-C101  
INV EL 231.890  
50-VTA-C101  
INV EL 236.830  
100-D-C101  
INV EL 231.492  
RUNNING TRAP  
INV-231.110

**BLOWER ROOM**  
⊗ EL 232.650

**STAIR 2**

**RAS CHANNEL TOP**  
⊗ EL 235.400

**P.E. CHANNEL TOP**  
⊗ EL 234.400

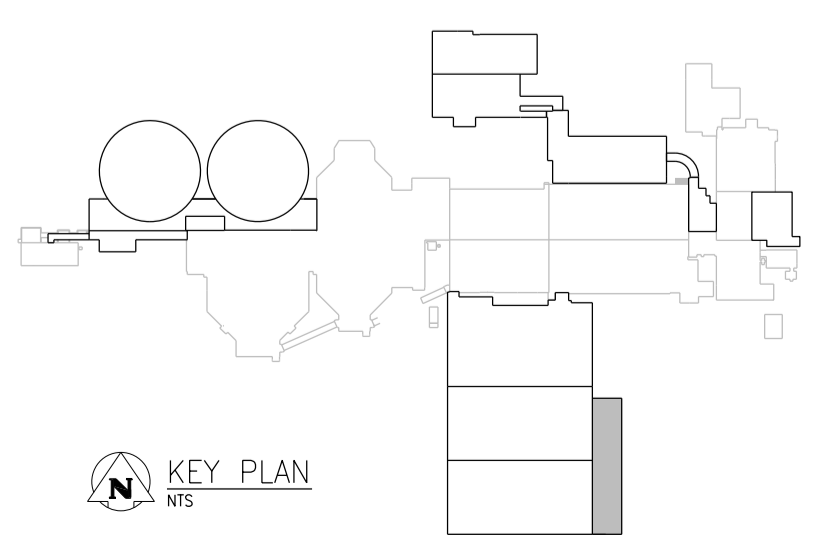
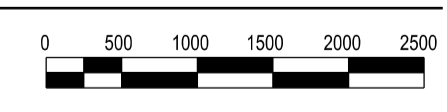
PRE-ANOXIC ZONE

ANAEROBIC ZONE

ANOXIC ZONE

**GROUND FLOOR PLAN - PART B**

1:50



**APEGM**  
Certificate of Authorization  
CH2M HILL Canada Ltd.  
No. 1441

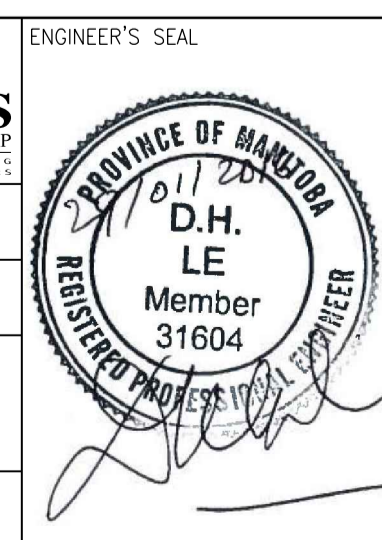
NO.	REVISIONS	DATE	DESIGN	CHECK
00	ISSUED FOR TENDER - B.O. 899-2015	01/2016	P.K.	J.C.

**CH2MHILL.**  
SNC-LAVALIN

DESIGNED BY: T. TRAN  
DRAWN BY: P. KWONG  
SCALE: 1:50  
DATE: 2016/01/29

CHECKED BY: D. LE  
APPROVED BY: H.T. FREIHAMMER  
ISSUED FOR CONSTRUCTION BY: T. TURZAK  
DATE: 2016/01/29

CONSULTANT NO.: 474248



**THE CITY OF WINNIPEG**  
Winnipeg WATER AND WASTE DEPARTMENT

SOUTH END WATER POLLUTION CONTROL CENTRE  
SEWPPC UPGRADING/EXPANSION PROJECT  
MECHANICAL  
BIOREACTOR/BLOWER BUILDING  
PLUMBING - GROUND FLOOR PLAN - PART B

CITY DRAWING NUMBER: 1-0102-MGAD-R508  
SHEET: 001  
REV: 00  
SIZE: A1