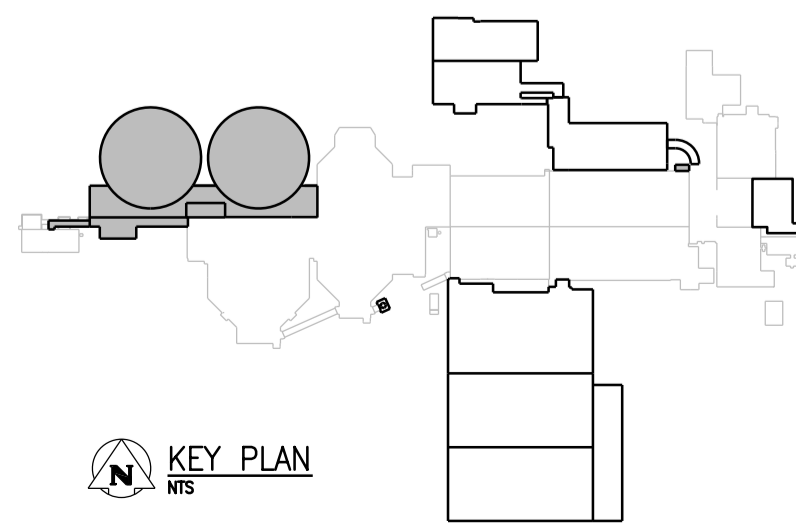
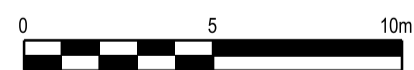


OVERALL BASEMENT PLAN

1:200

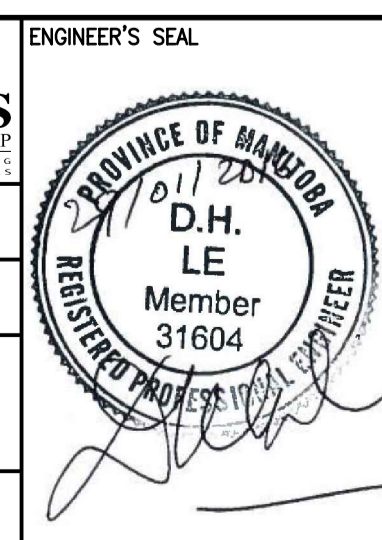


KEY PLAN



NO.	REVISIONS	DATE	DESIGN	CHECK
00	ISSUED FOR TENDER - B.O. 899-2015	01/2016	A.M.	T.T.

CH2MHILL		KGS GROUP	
SNC-LAVALIN		ENGINEER'S SEAL	
DESIGNED BY: D. LE	CHECKED BY: T. TRAN		
DRAWN BY: A. BERSHTEIN	APPROVED BY: H.T. FREIHAMMER		
SCALE: 1:200	ISSUED FOR CONSTRUCTION BY: T. TURZAK		
DATE: 2016/01/29	DATE: 2016/01/29		
CONSULTANT NO.: 474248			



THE CITY OF WINNIPEG WATER AND WASTE DEPARTMENT		
SOUTH END WATER POLLUTION CONTROL CENTRE SEWPCC UPGRADING/EXPANSION PROJECT MECHANICAL SECONDARY CLARIFIERS 4 AND 5 HVAC - OVERALL BASEMENT PLAN		
CITY DRAWING NUMBER	SHEET	REV. SIZE
1-0102-MGAD-S601	001	00 A1