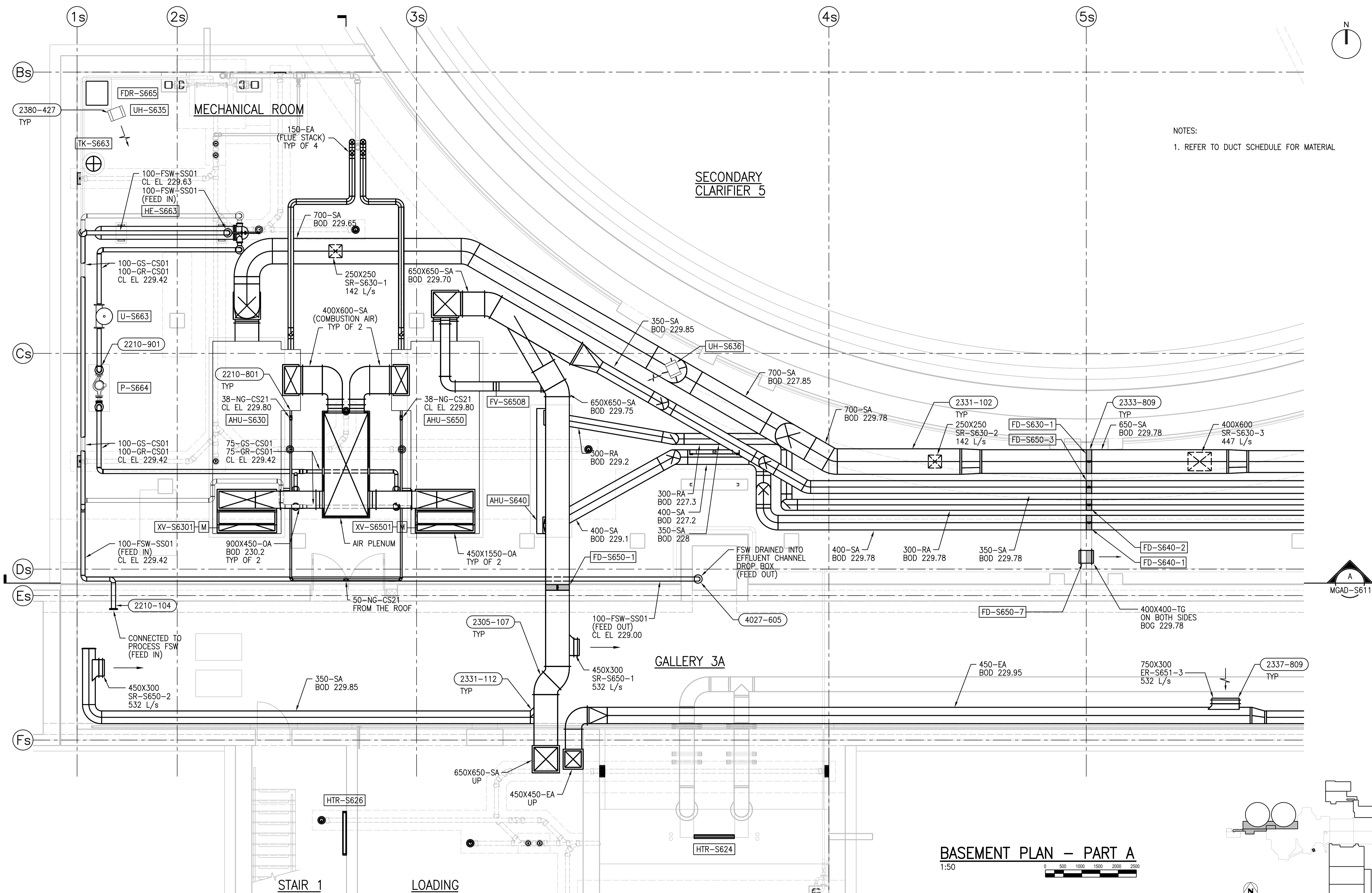


A1 SIZE - 594mm x 841mm

©CH2M HILL 2015. ALL RIGHTS RESERVED.



NOTES:
1. REFER TO DUCT SCHEDULE FOR MATERIAL

BASEMENT PLAN - PART A
1:50

APEGM
Certificate of Authorization
CH2M HILL Canada Ltd.
No. 1441

NO.	REVISIONS	DATE	DESIGN	CHECK
00	ISSUED FOR TENDER - B.O. 899-2015	01/2016	A.B.	T.T.

CH2MHILL		KCS GROUP	
DESIGNED BY: D. LE	CHECKED BY: T. TRAN	ENGINEER'S SEAL	
DRAWN BY: A. BERSHTEIN	APPROVED BY: H.T. FREIHAMMER		
SCALE: 1:50	ISSUED FOR CONSTRUCTION BY: T. TURZAK		
DATE: 2016/01/29	DATE: 2016/01/29	CONSULTANT NO.: 474248	

THE CITY OF WINNIPEG
Winnipeg WATER AND WASTE DEPARTMENT

SOUTH END WATER POLLUTION CONTROL CENTRE
SEWPC UPGRADING/EXPANSION PROJECT
MECHANICAL
SECONDARY CLARIFIERS 4 AND 5
HVAC - BASEMENT PLAN - PART A

CITY DRAWING NUMBER: 1-0102-MGAD-S602
SHEET: 001
REV: 00
SIZE: A1

PLOT DATE: 1/27/2016

FILE NAME: 1-0102-MGAD-S602.dgn