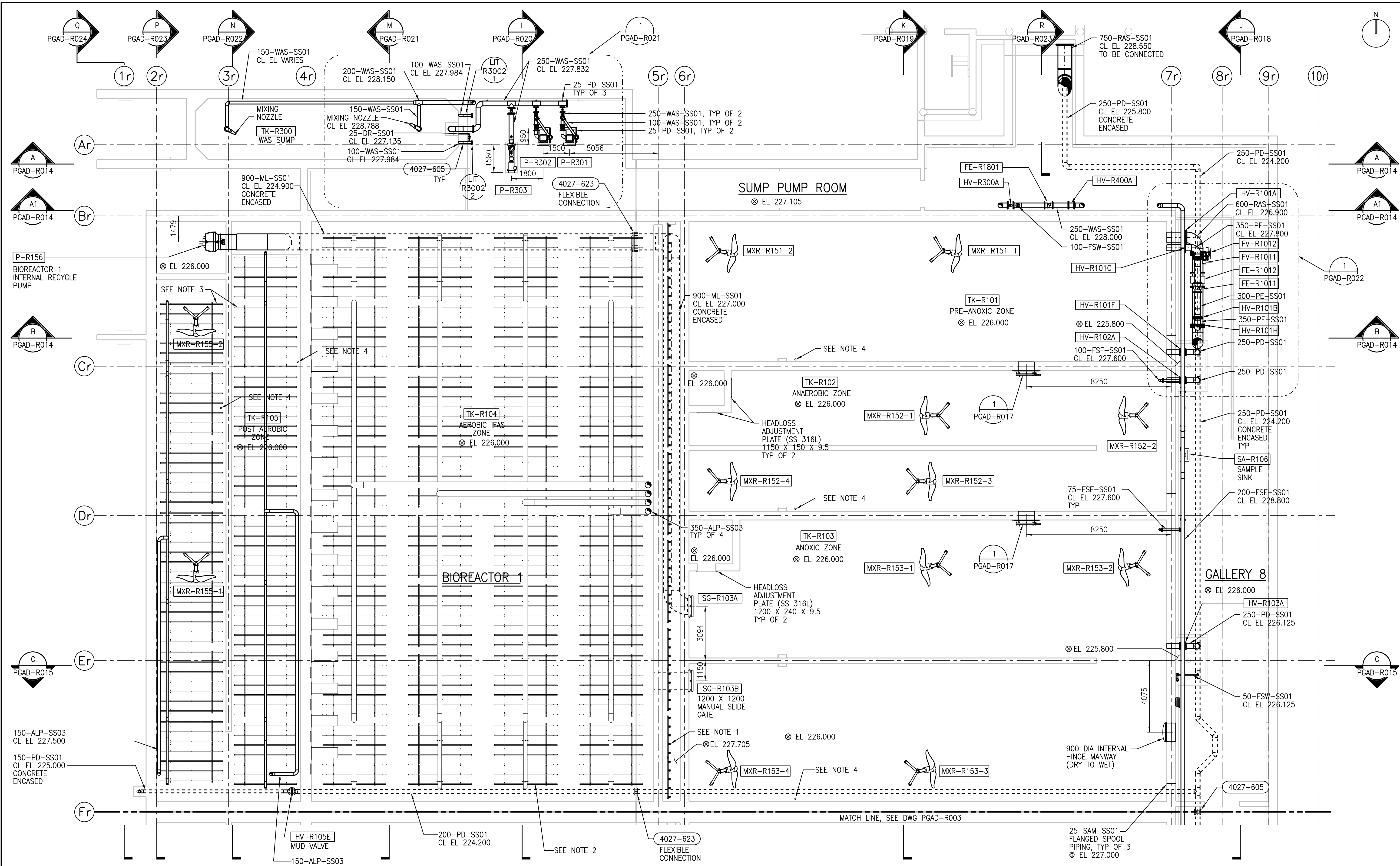


A1 SIZE - 594mm x 841mm

© CH2M HILL 2015. ALL RIGHTS RESERVED.



- NOTES:**
1. COARSE BUBBLE AERATION REMOVABLE MANIFOLD ASSEMBLIES TYPICAL (REFER TO VENDOR DRAWINGS FOR PLACEMENT LOCATION AND DETAILS).
  2. AEROBIC IFAS ZONE AERATION SYSTEM (REFER TO VENDOR DRAWINGS FOR PLACEMENT LOCATION AND DETAILS).
  3. POST AEROBIC ZONE AERATION ASSEMBLIES SYSTEM (REFER TO VENDOR DRAWINGS FOR PLACEMENT LOCATION AND DETAILS).
  4. SAMPLING AT ELEVATION 229M FIELD ROUTE 25-PVC PIPING TO SAMPLING SINK. AVOID HIGH POINTS IN ROUTING TO PREVENT AIR LOCKS.

**LOWER LEVEL PLAN - PART A**

1:100



NO.	REVISIONS	DATE	DESIGN	CHECK
00	ISSUED FOR TENDER - B.O. 899-2015	01/2016	B.C.	J.C.

**CH2MHILL**  
SNC-LAVALIN

DESIGNED BY: F. ABSI  
DRAWN BY: B. COOPER  
SCALE: 1:100  
DATE: 2016/01/29

CHECKED BY: B. EDGAR  
APPROVED BY: H.T. FREIHAMMER  
ISSUED FOR CONSTRUCTION BY: T. TURZAK  
DATE: 2016/01/29

CONSULTANT NO.: 474248

ENGINEER'S SEAL

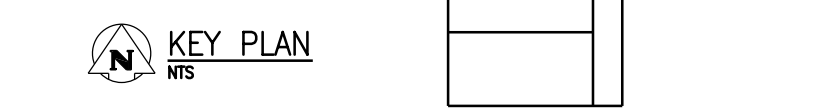
29/01/2016

PROVINCE OF MANITOBA  
REGISTERED PROFESSIONAL ENGINEER  
F. J. ABSI  
Member 36575

THE CITY OF WINNIPEG  
Winnipeg WATER AND WASTE DEPARTMENT

SOUTH END WATER POLLUTION CONTROL CENTRE  
SEWPCC UPGRADING/EXPANSION PROJECT  
PROCESS  
BIOREACTOR 1  
LOWER LEVEL PLAN - PART A

CITY DRAWING NUMBER: 1-0102-PGAD-R002  
SHEET: 001  
REV: 00  
SIZE: A1



PLOT DATE: 1/27/2016

FILE NAME: 1-0102-PGAD-R002.dgn