

BENT STRAP W/ WASHER

STRAP WELDED TO PLATE

PIPE SUPPORT - CONCRETE SADDLE
NTS

PIPE DIAMETER D (mm)	SADDLE WIDTH B (mm)	LAYERS OF REINFORCING	VERTICAL REINFORCING VR	HORIZONTAL REINFORCING HR	DIAGONAL REINFORCING (EACH SIDE)	HORN			PIPE STRAP		
						LENGTH X (mm)	REINFORCING	TIES	STRAP SIZE S (mm)	PLATE PL (mm)	ANCHOR BOLT EMBED (mm)
75 TO 300	200	1 CTRD	15M@300	15M@300	-	150	1-15M EF	-	5 x 75	-	1-16M 400
350 TO 600	250	2 EF	15M@200	15M@200	1-10M	200	1-15M EF	-	6 x 75	-	1-16M 400
650 TO 1200	300	2 EF	20M@200	20M@200	2-15M	300	2-20M EF	3-10M@200	8 x 75	-	1-25M 600
1250 TO 2400	350	2 EF	25M@250	20M@200	2-20M	350	3-25M EF	4-10M@200	10 x 140	PL100x200x20	2-25M 600

NOTES:

- FORM 20mm BEVEL ON ALL EXPOSED CORNERS OF SUPPORT.
- PROVIDE PIPE STRAP AT ALL PIPES. UNLESS INDICATED OTHERWISE A STRAP IS NOT REQUIRED.
- AT SUBMERGED CONDITIONS, STRAP SHALL BE STAINLESS STEEL.
- PROVIDE 3mm NEOPRENE BOND BREAKER PAD BETWEEN PIPE & METAL STRAP, WIDTH TO MATCH STRAP PLUS 100mm, TYPICAL.
- ANCHOR BOLTS TYPE A325 GALVANIZED.

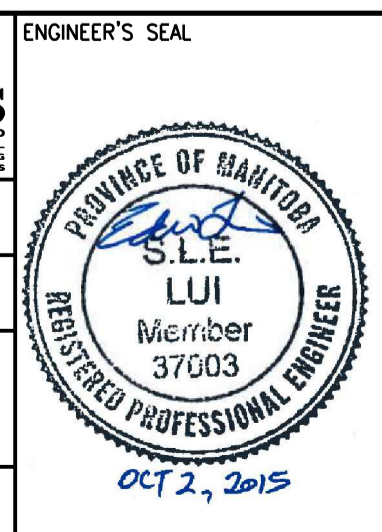
0330-823



DESIGNED BY: E. LUI	CHECKED BY: R. PARIKH
DRAWN BY: G. OMORI	APPROVED BY: E. LUI
SCALE: NTS	ISSUED FOR CONSTRUCTION BY: T. TURZAK
DATE: 2015/08/13	DATE: 2015/10/02
CONSULTANT NO.: 474248	

CH2MHILL.
SNC-LAVALIN

KCS GROUP CONSULTING ENGINEERS



THE CITY OF WINNIPEG
Winnipeg WATER AND WASTE DEPARTMENT

SOUTH END WATER POLLUTION CONTROL CENTRE
SEWPCC UPGRADE/EXPANSION PROJECT
STRUCTURAL
STANDARD DETAILS (8)

CITY DRAWING NUMBER: 1-0102-SDTL-A009
SHEET: 01
REV: 01
SIZE: A1