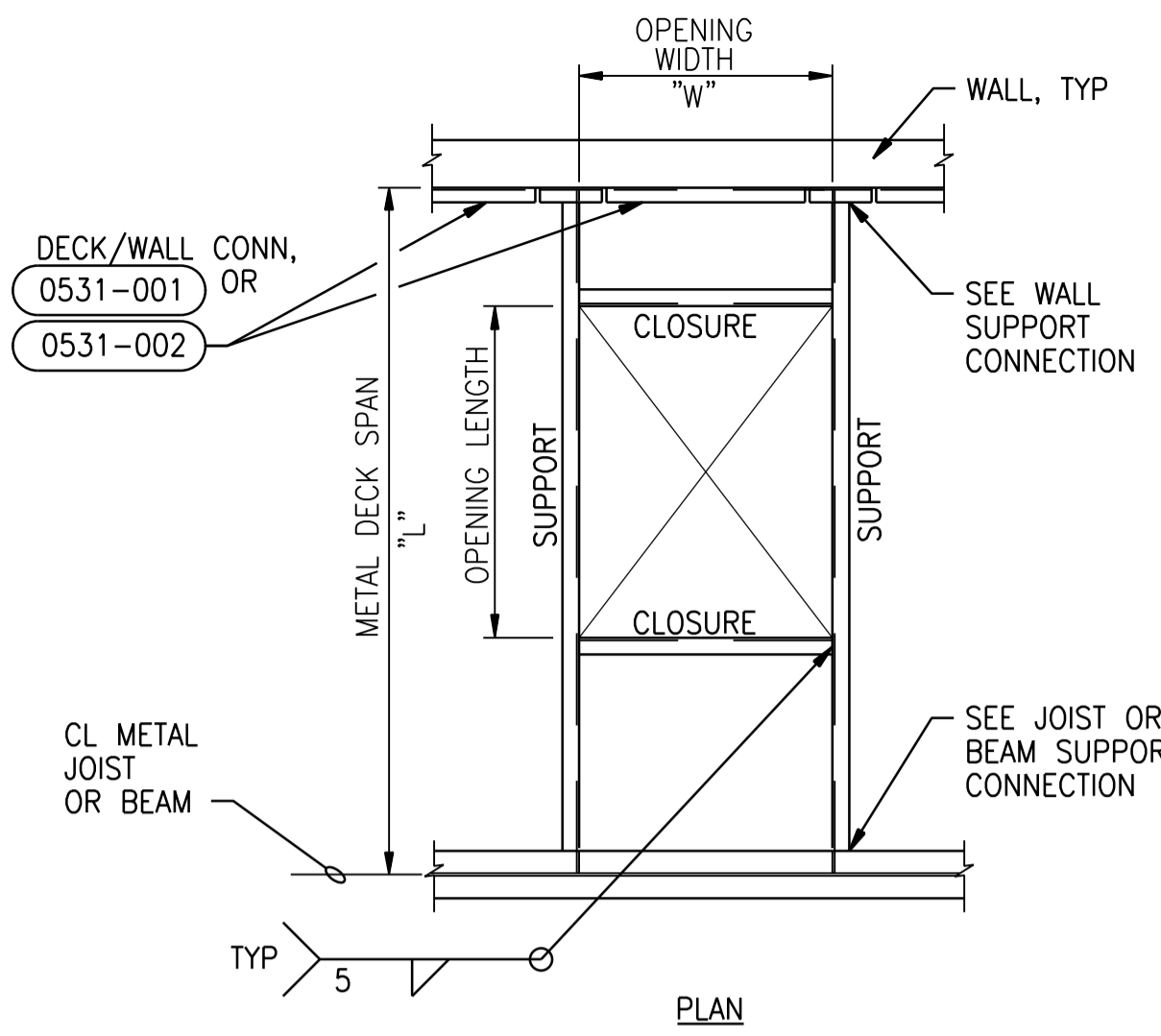


A1 SIZE - 594mm x 841mm

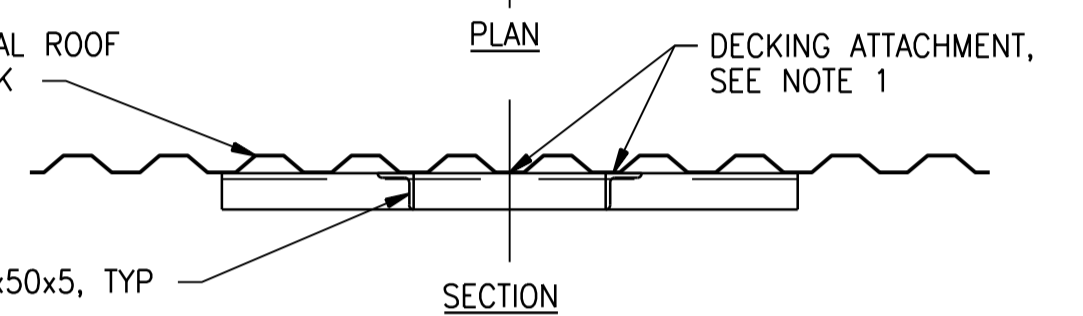
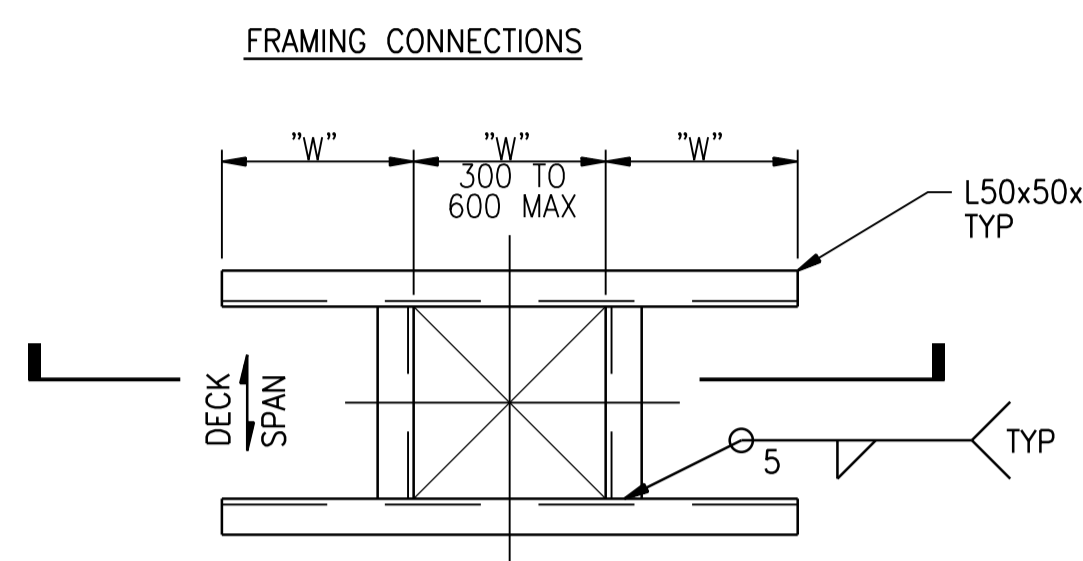
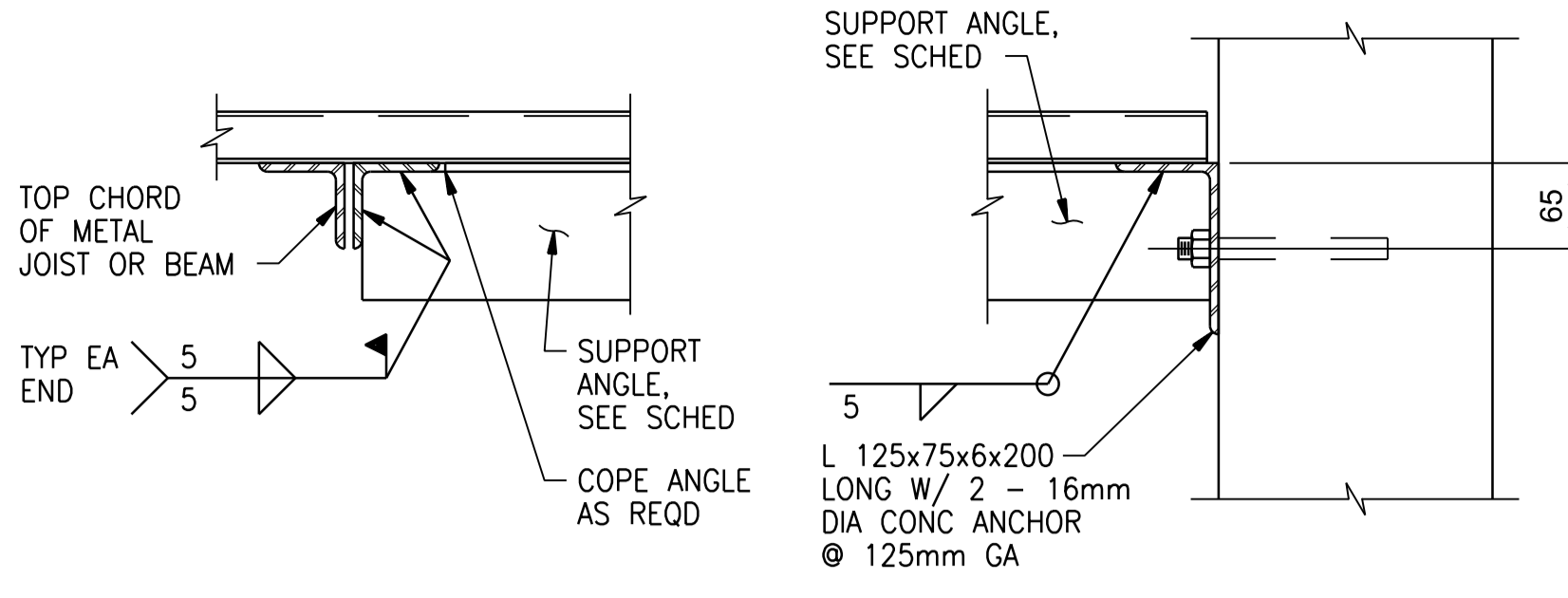


OPENING	CLOSURE	DECK SPAN	SUPPORT
600 < W ≤ 1200	L 75x75x6	L ≤ 1800	L 100x75x6 (LLV)
1200 < W ≤ 1800	L 100x75x6 (LLV)	1800 < L ≤ 2250	L 125x75x6 (LLV)
1800 < W	NA	2250 < L	NA

OPENINGS 625mm TO 1800mm

- NOTES:
- ATTACH METAL DECKING TO ALL SUPPORTS PERPENDICULAR TO DECKING SPAN WITH SPECIFIED FASTENERS AT EACH VALLEY OF DECKING. ATTACH METAL DECKING TO SUPPORTS PARALLEL TO SPAN @ 150mm ON CENTER. WHERE VALLEY OF DECKING DOES NOT FALL AT SUPPORTS PARALLEL TO DECK SPAN, PROVIDE FILLER PIECES FOR EQUAL ATTACHMENTS.
  - REFER TO SPECIFICATIONS FOR SMALLER DECK OPENING REINFORCEMENT.

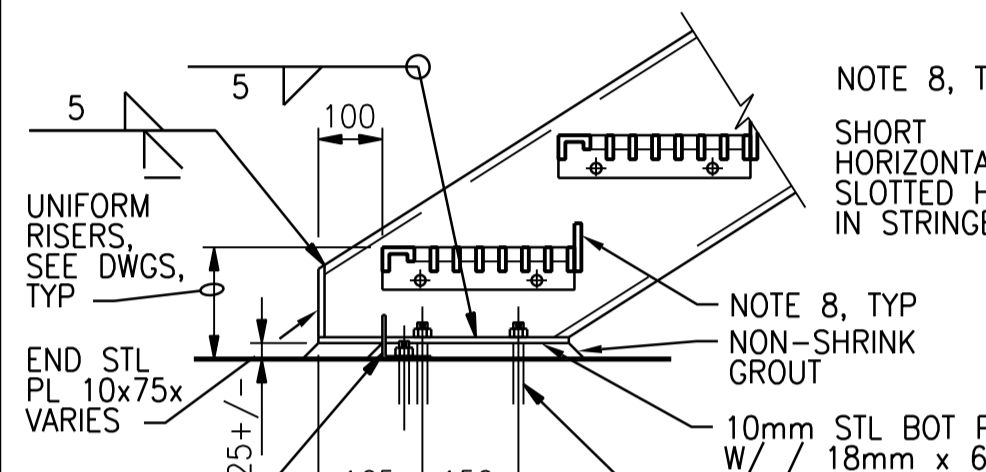
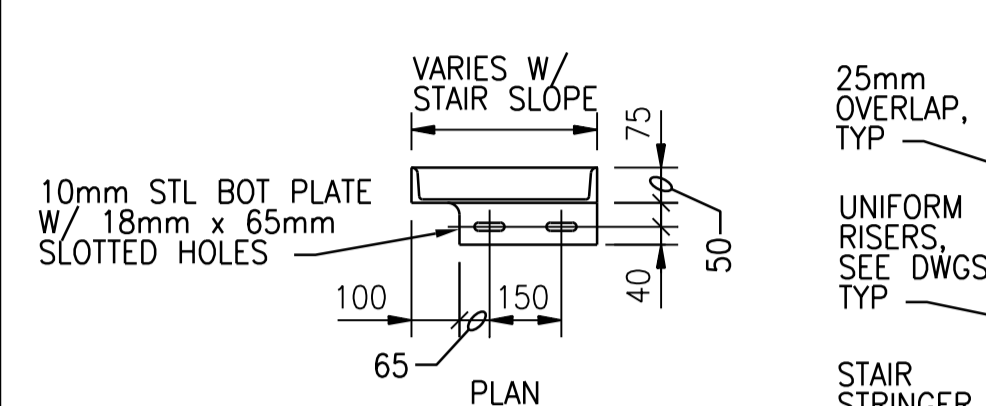
ROOF DECK OPENING  
NTS



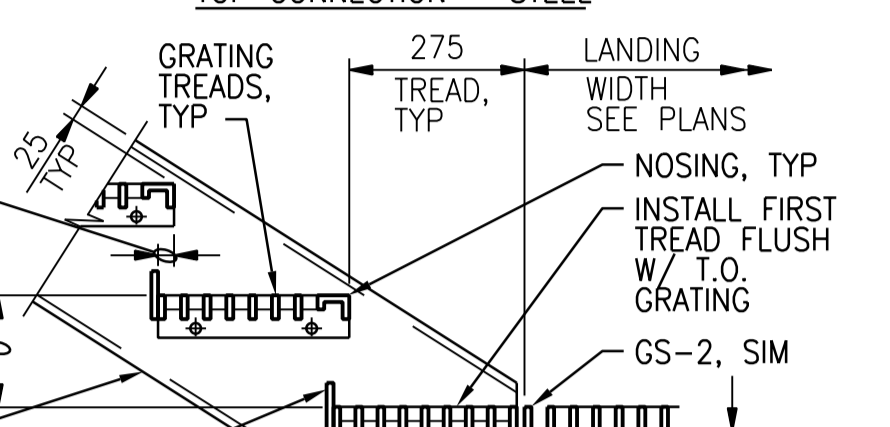
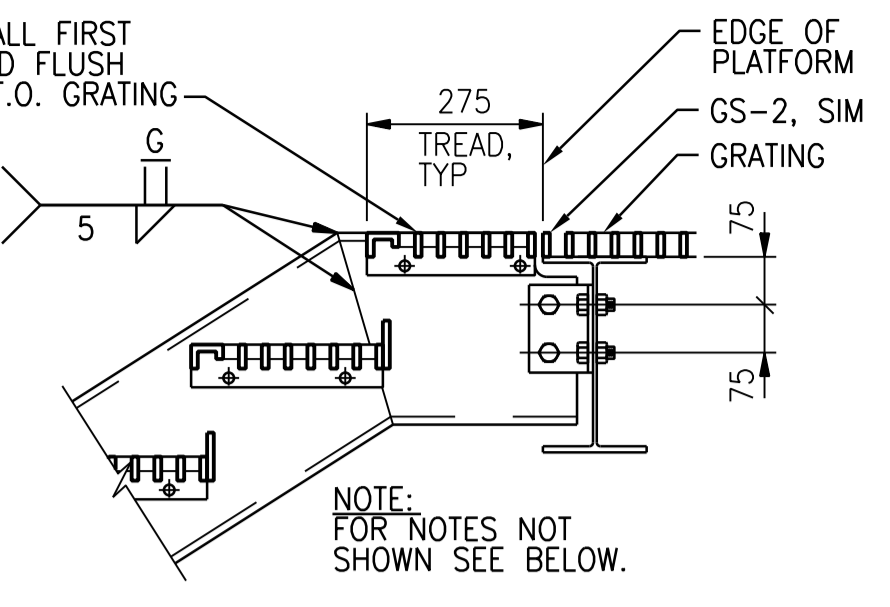
OPENINGS 300mm TO 600mm

0531-021

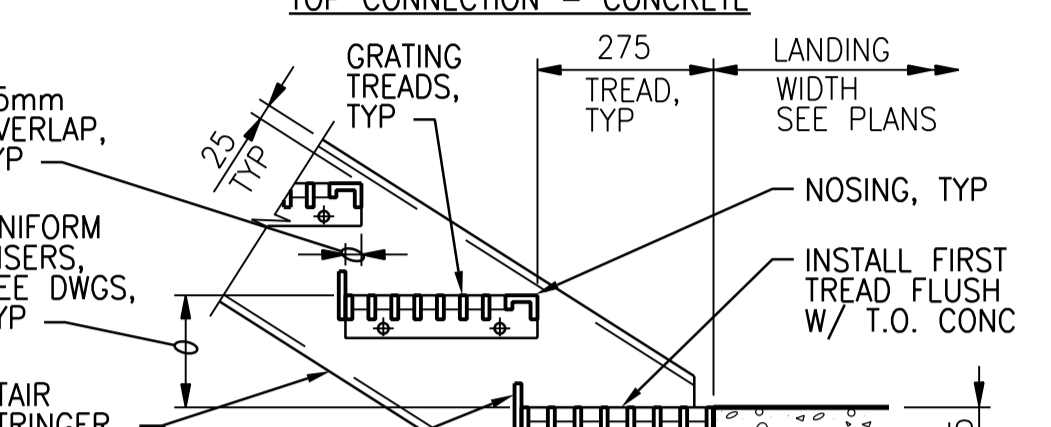
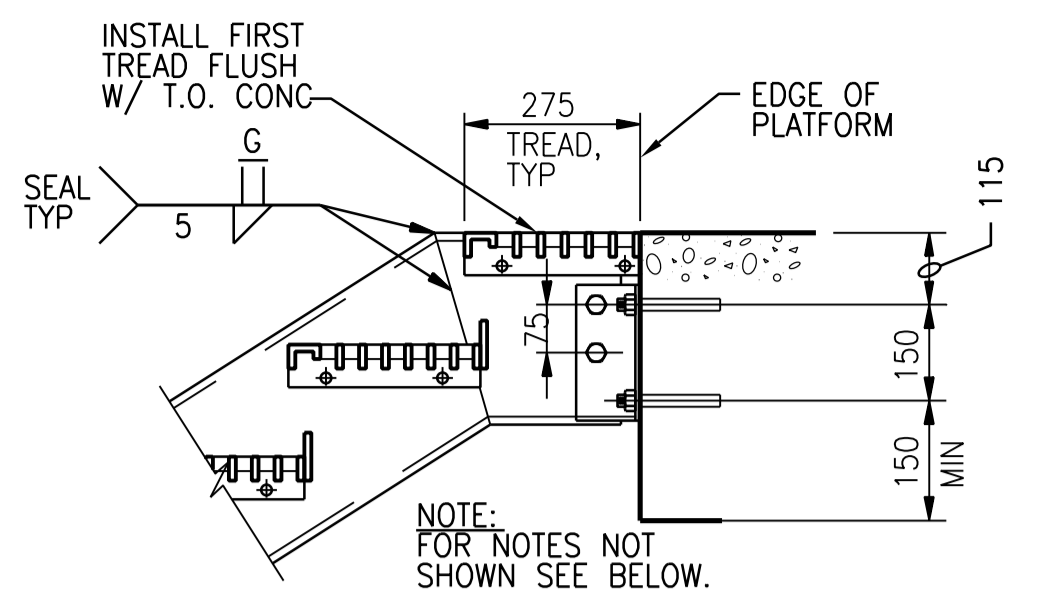
- NOTES:
- PROVIDE PROTECTION FOR DISSIMILAR METALS AND CONCRETE AS SPECIFIED.
  - AMERICAN STANDARD C310x31 STRINGERS TYPICAL EXCEPT WHERE OTHERWISE NOTED ON PLANS.
  - GALVANIZED STEEL GRATING TREADS UNLESS OTHERWISE NOTED ON PLANS.
  - STAIR HANDRAIL NOT SHOWN.
  - STAIR MANUFACTURER TO COORDINATE BOLTED TREADS AND HANDRAIL CONNECTIONS.
  - FIELD VERIFY DIMENSIONS AND ELEVATIONS PRIOR TO FABRICATION.
  - HOT DIP GALVANIZE ALL MEMBERS AND FASTENERS AFTER FABRICATION.
  - FOR RISER PLATE SEE PARTIAL RISER PLATE DETAIL (0551-041 DETAIL 2 OF 2) UNO. CLEARANCE BETWEEN TOP OF RISER PLATE AND BOTTOM OF TREAD TO BE 90mm MAX. FOR STAIRS WITH PICKET HANDRAIL EXTEND RISER PLATE PER FULL RISER PLATE DETAIL.



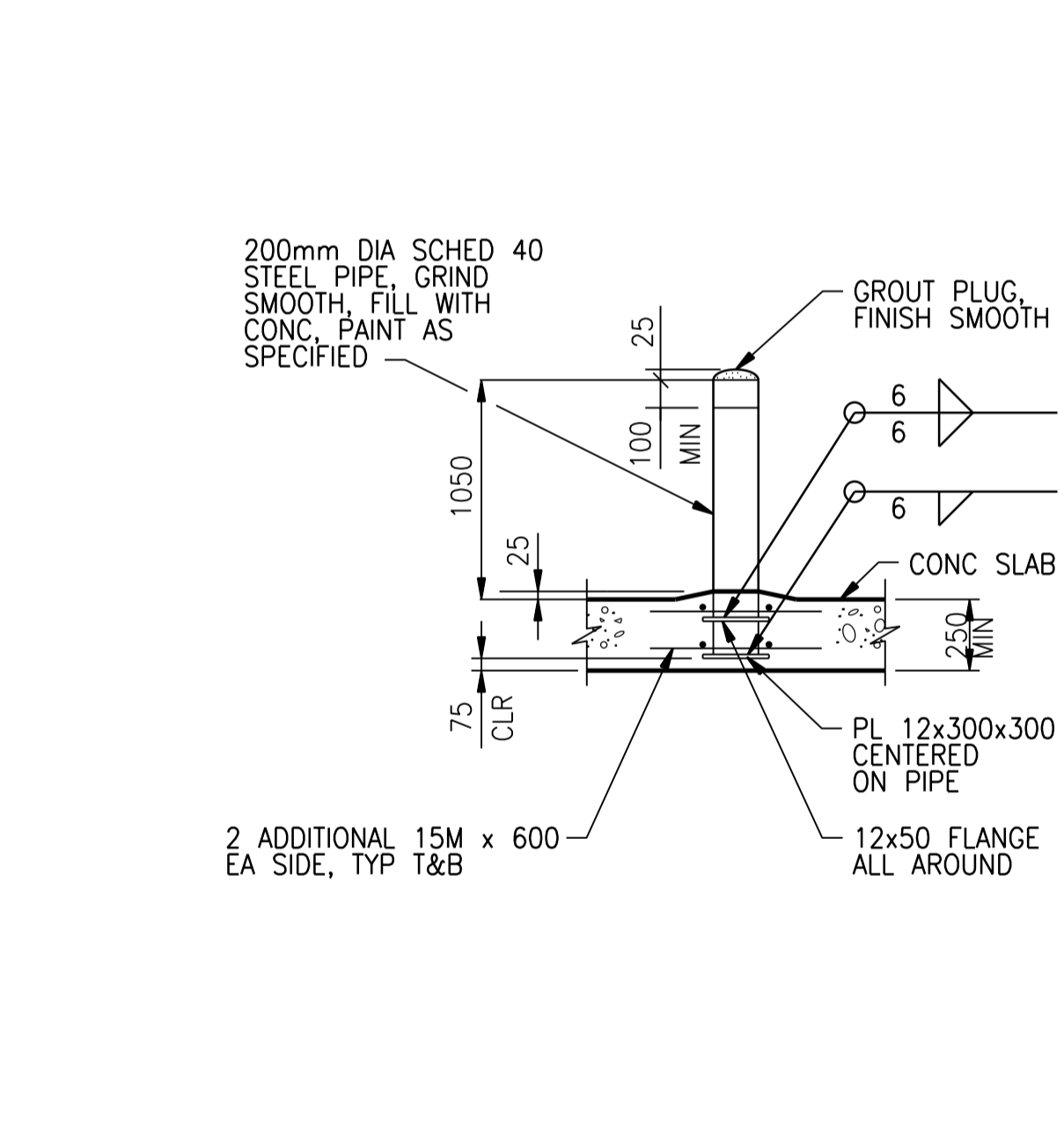
STAIR DETAILS - STEEL  
NTS



STAIR DETAILS - STEEL  
NTS



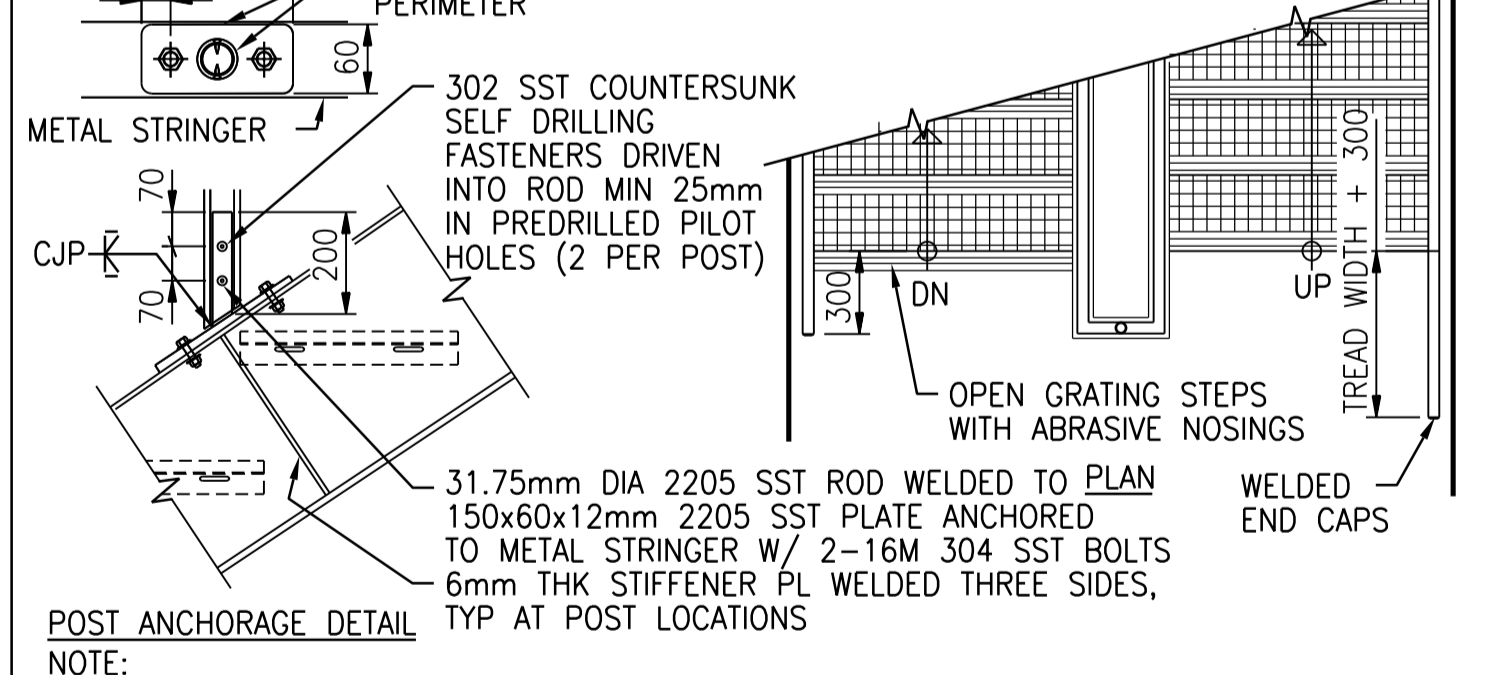
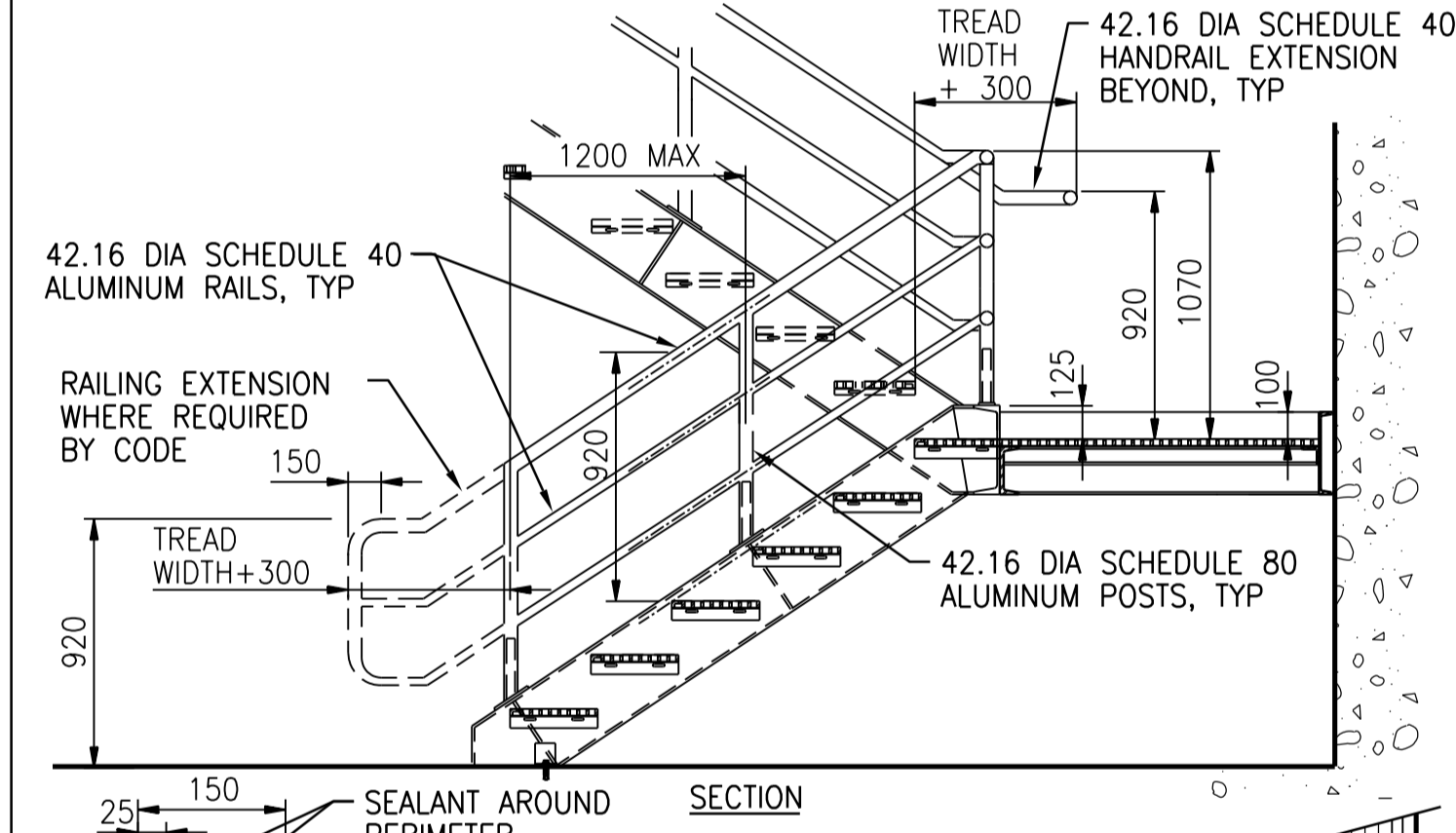
STAIR DETAILS - STEEL  
NTS



- NOTE:
- HOT DIPPED GALVANIZED AFTER FABRICATION.

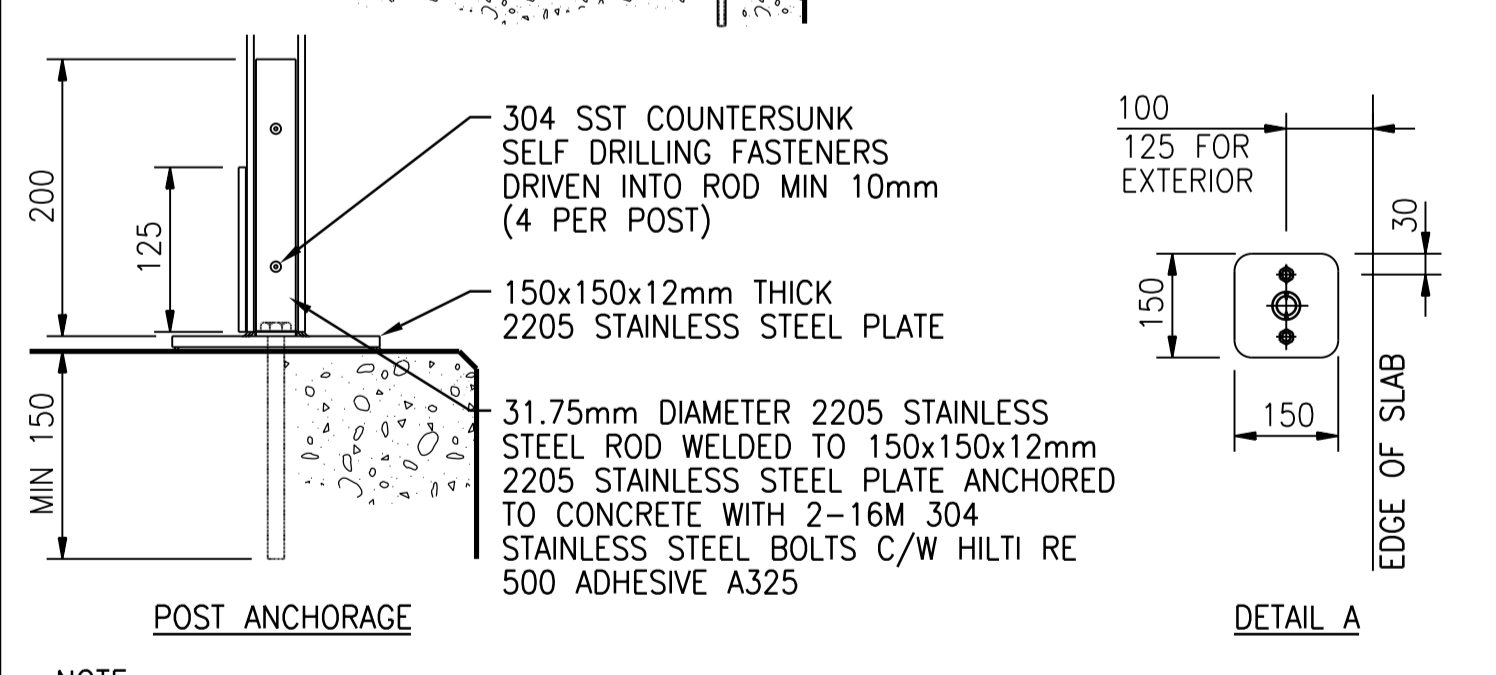
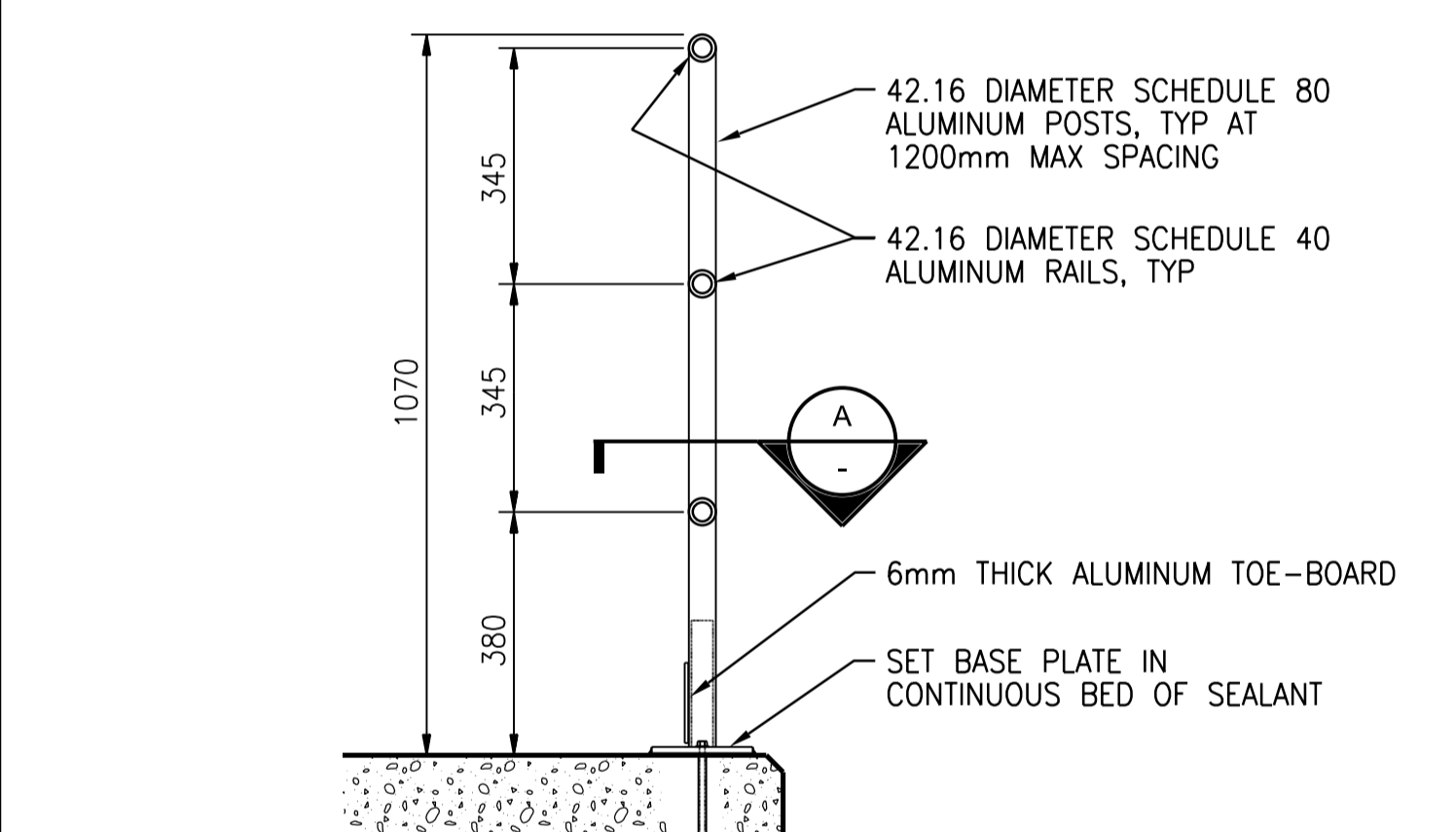
GUARD POST - INTERIOR  
NTS

0559-026



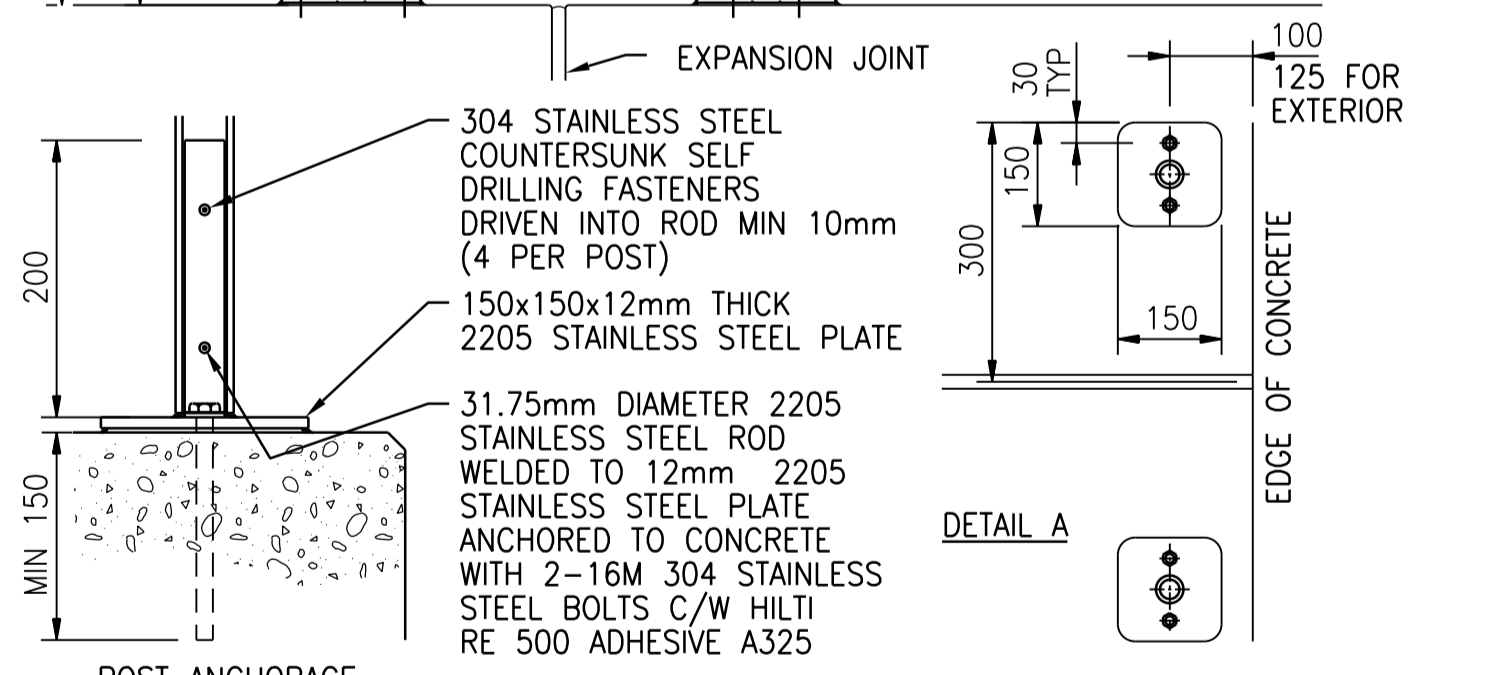
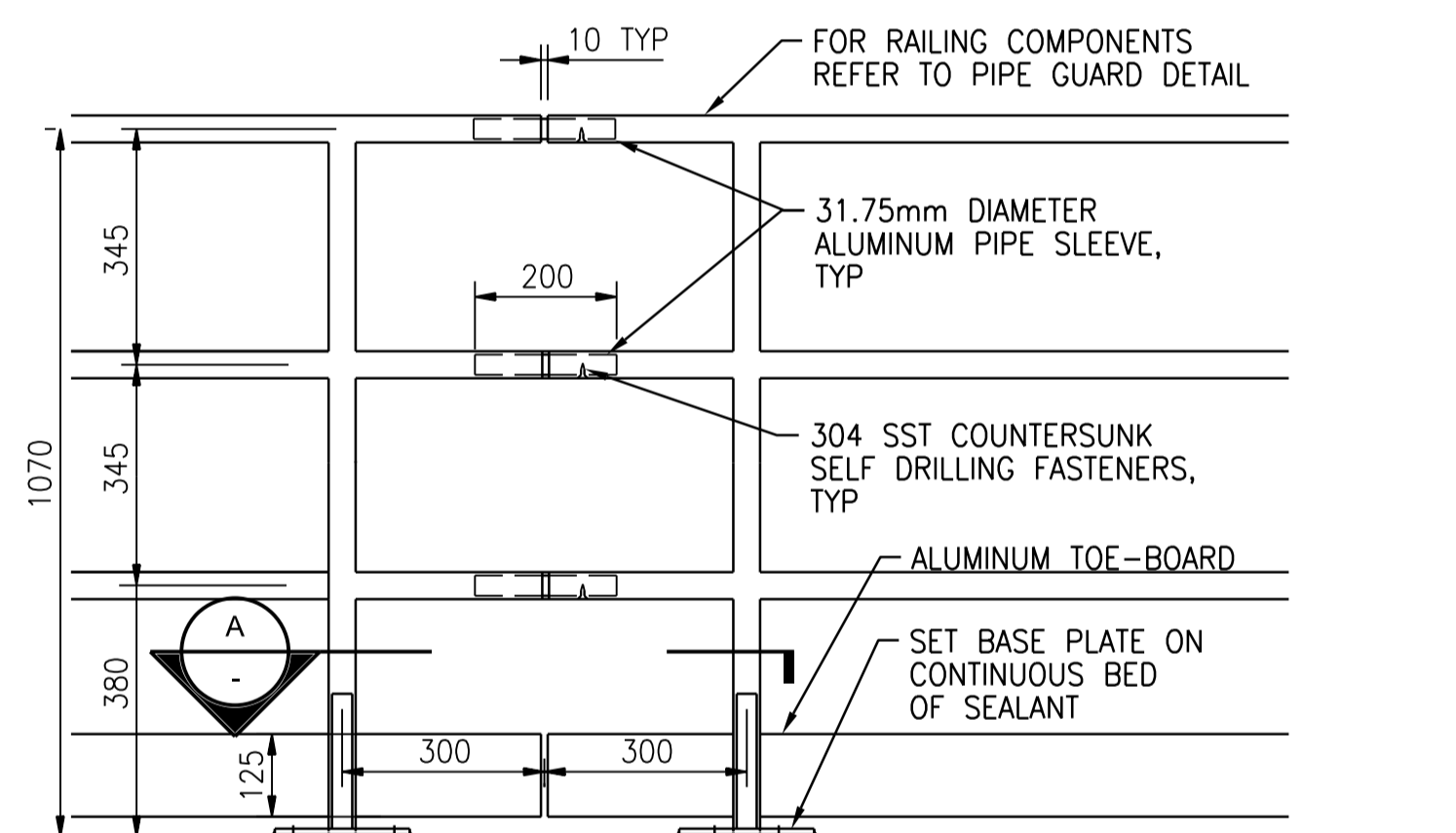
POST ANCHORAGE -  
OPEN GRATING METAL STAIR WITH 3 RAIL TUBE RAILING  
NTS

0552-805



POST ANCHORAGE - SURFACE MOUNTED 3 RAIL GUARD  
NTS

0552-812



POST ANCHORAGE -  
3 RAIL PIPE RAILING EXPANSION JOINT (SURFACE MOUNTED)  
NTS

0552-822



NO.	REVISIONS	DATE	DESIGN	CHECK
00	ISSUED FOR TENDER - B.O. 899-2015	01/2015	G.O.	J.C.

<b>CH2MHILL</b>		ENGINEER'S SEAL	
SNC-LAVALIN		KCS GROUP	
DESIGNED BY: J. THANNICKAL	CHECKED BY: E. LUI		
DRAWN BY: G. OMORI	APPROVED BY: H.T. FREIHAMMER		
SCALE: NTS	ISSUED FOR CONSTRUCTION BY: T. TURZAK		
DATE: 2016/01/19		DATE: 2016/01/29	
CONSULTANT NO.: 474248			

SOUTH END WATER POLLUTION CONTROL CENTRE SEWPPC UPGRADING/EXPANSION PROJECT STRUCTURAL STANDARD DETAILS (16)	
CITY DRAWING NUMBER 1-0102-SDTL-A017	SHEET REV. SIZE 00 A1

©CH2M HILL 2015. ALL RIGHTS RESERVED.