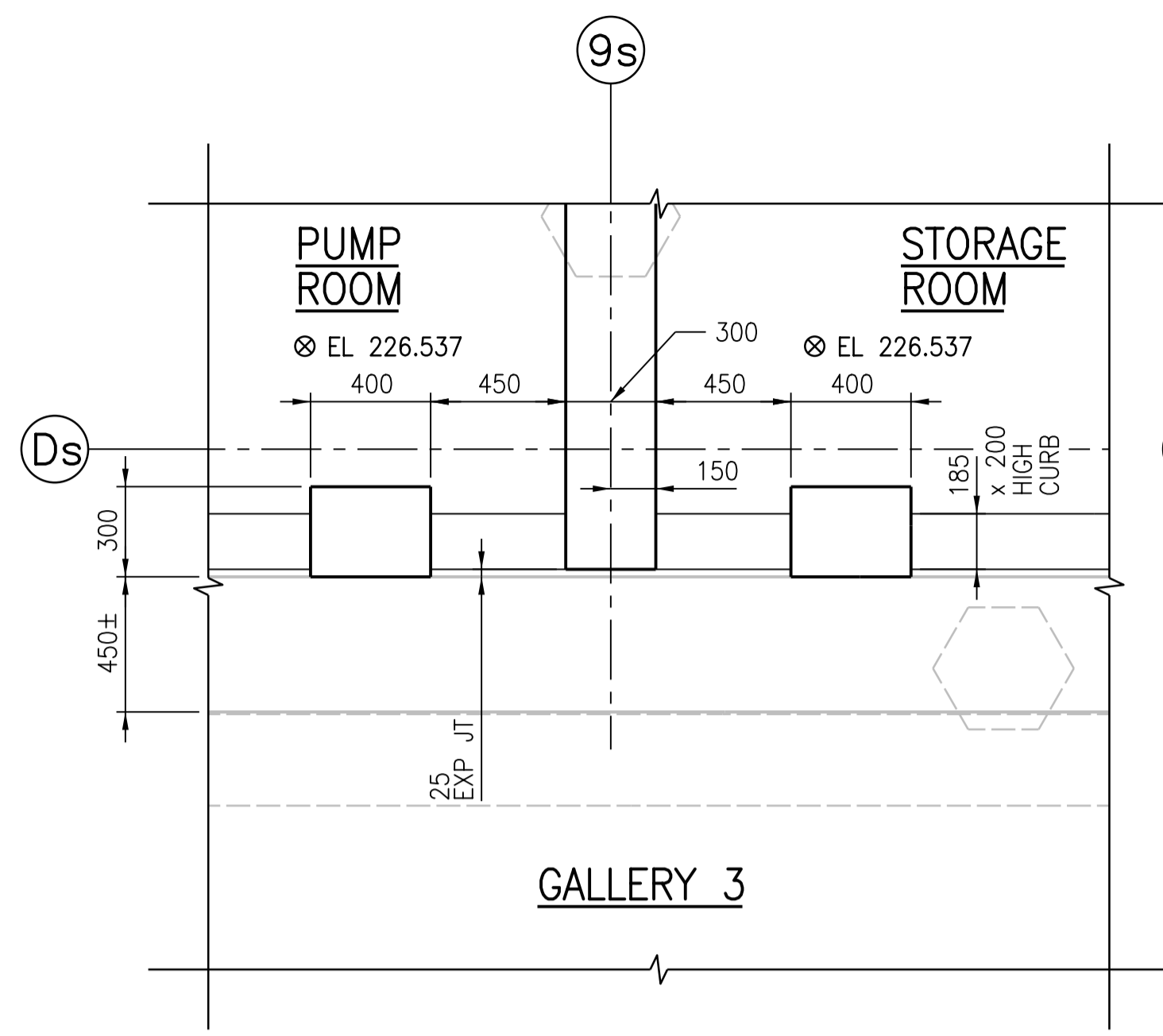
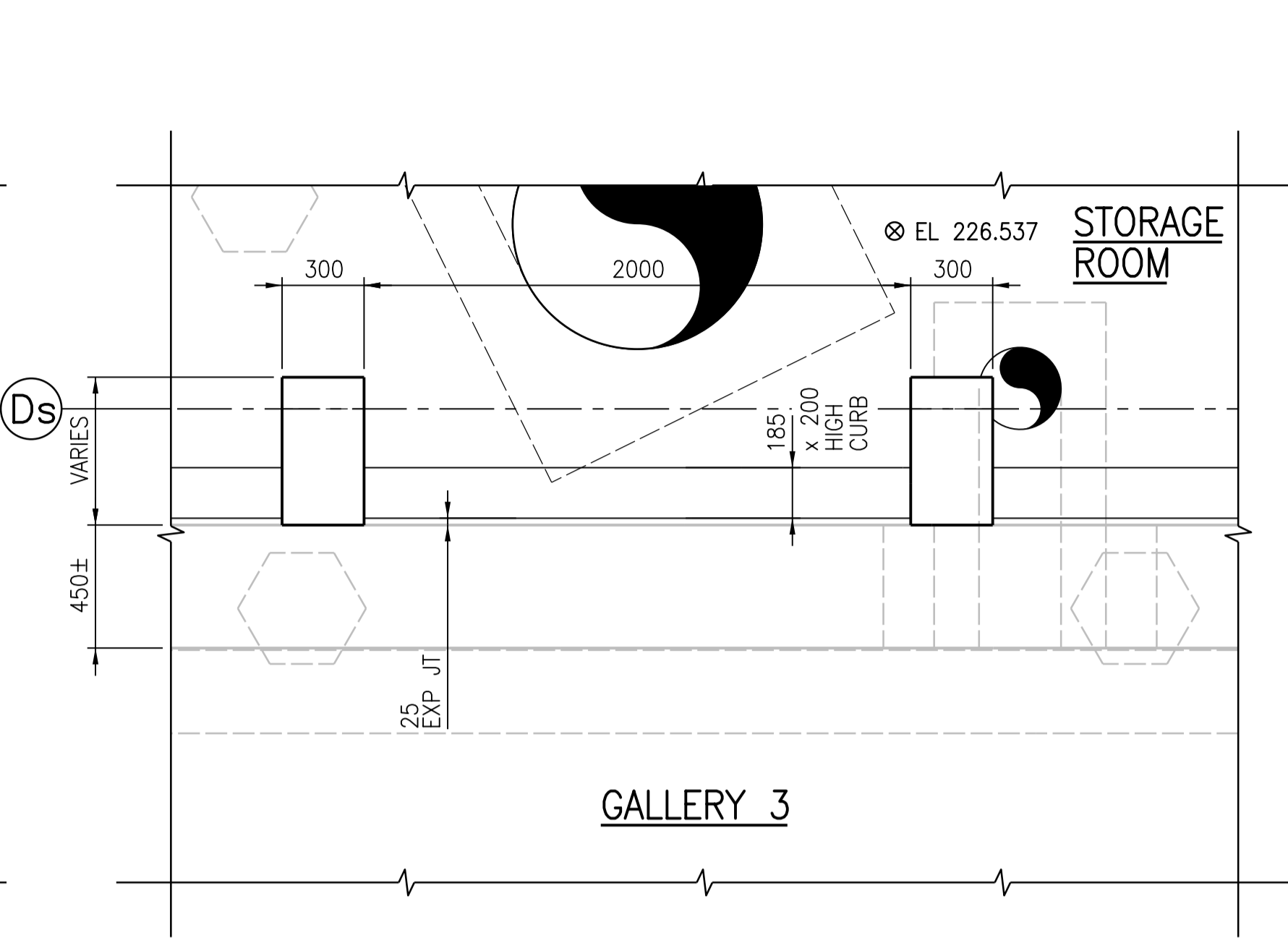


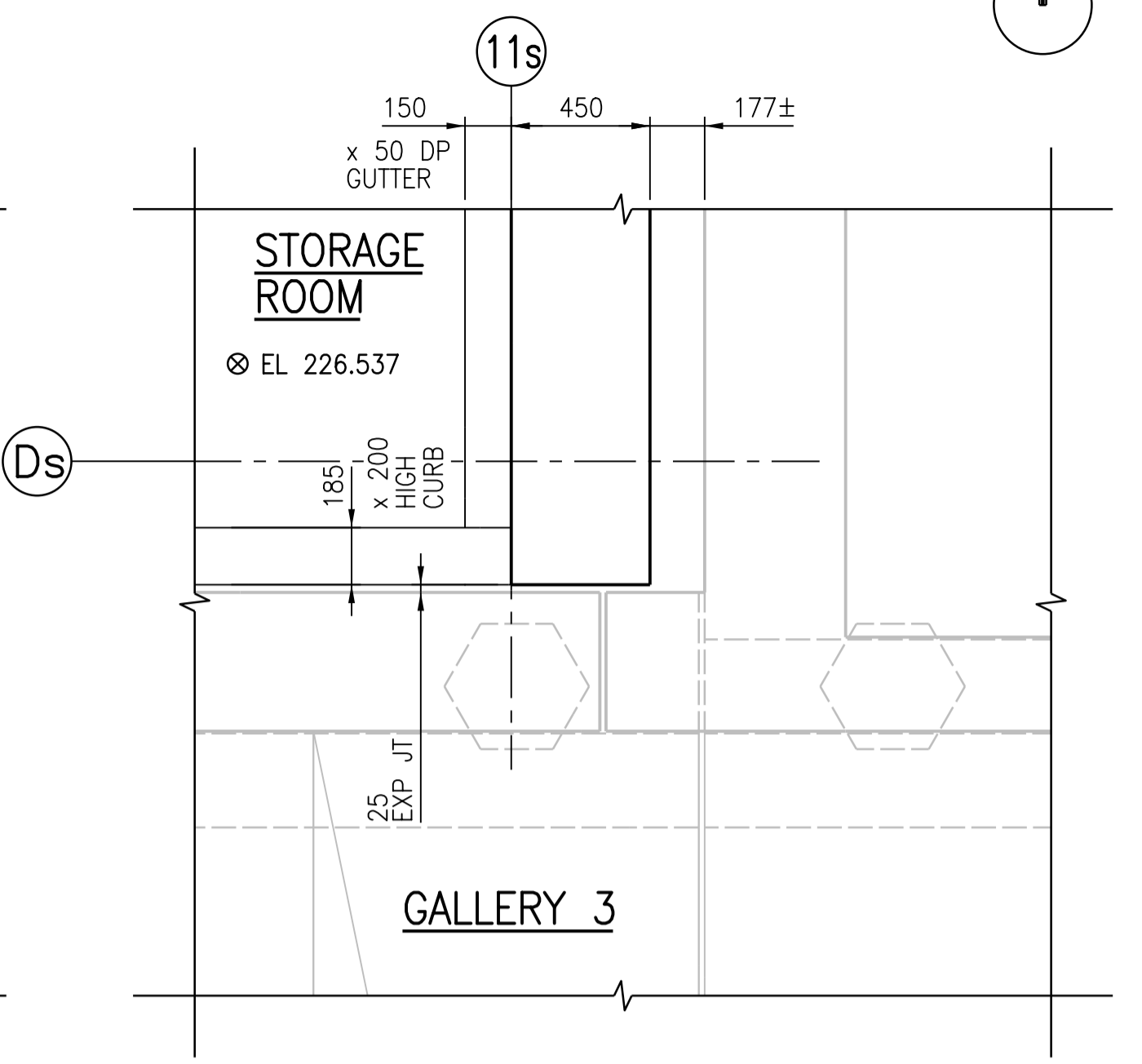
**1** DETAIL  
1:20  
SGAD-S005



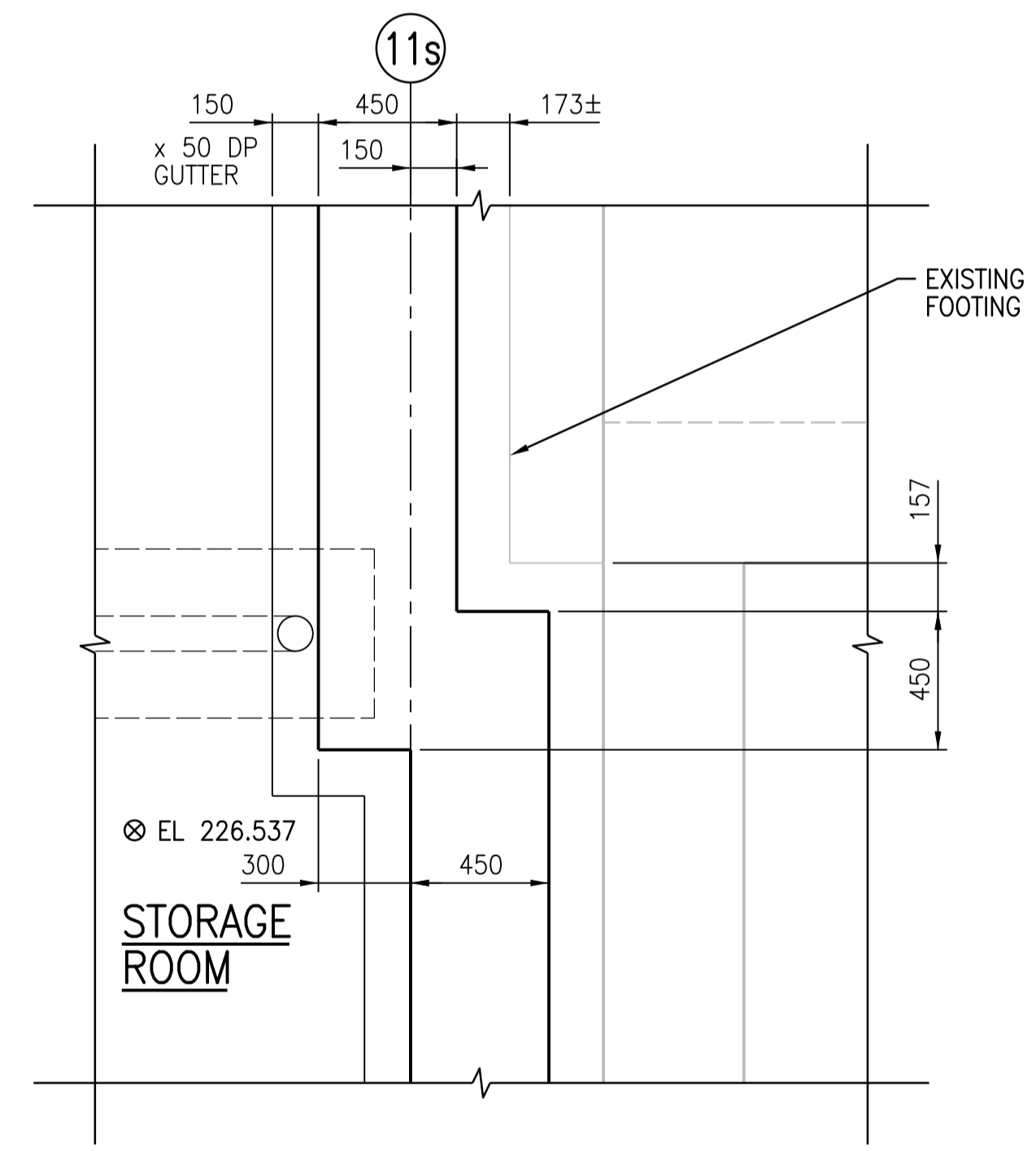
**2** DETAIL  
1:20  
SGAD-S005



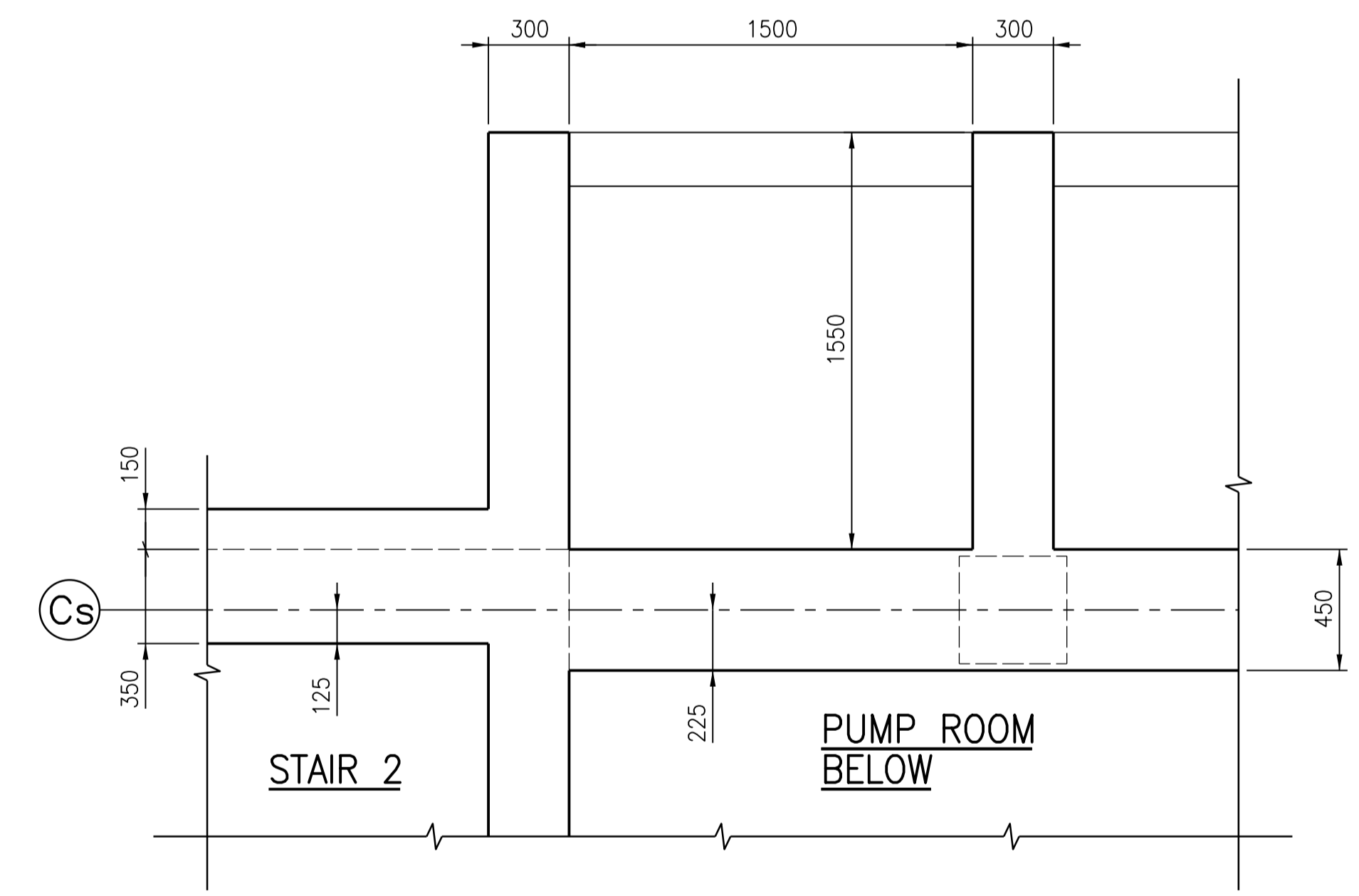
**3** DETAIL  
1:20  
SGAD-S005



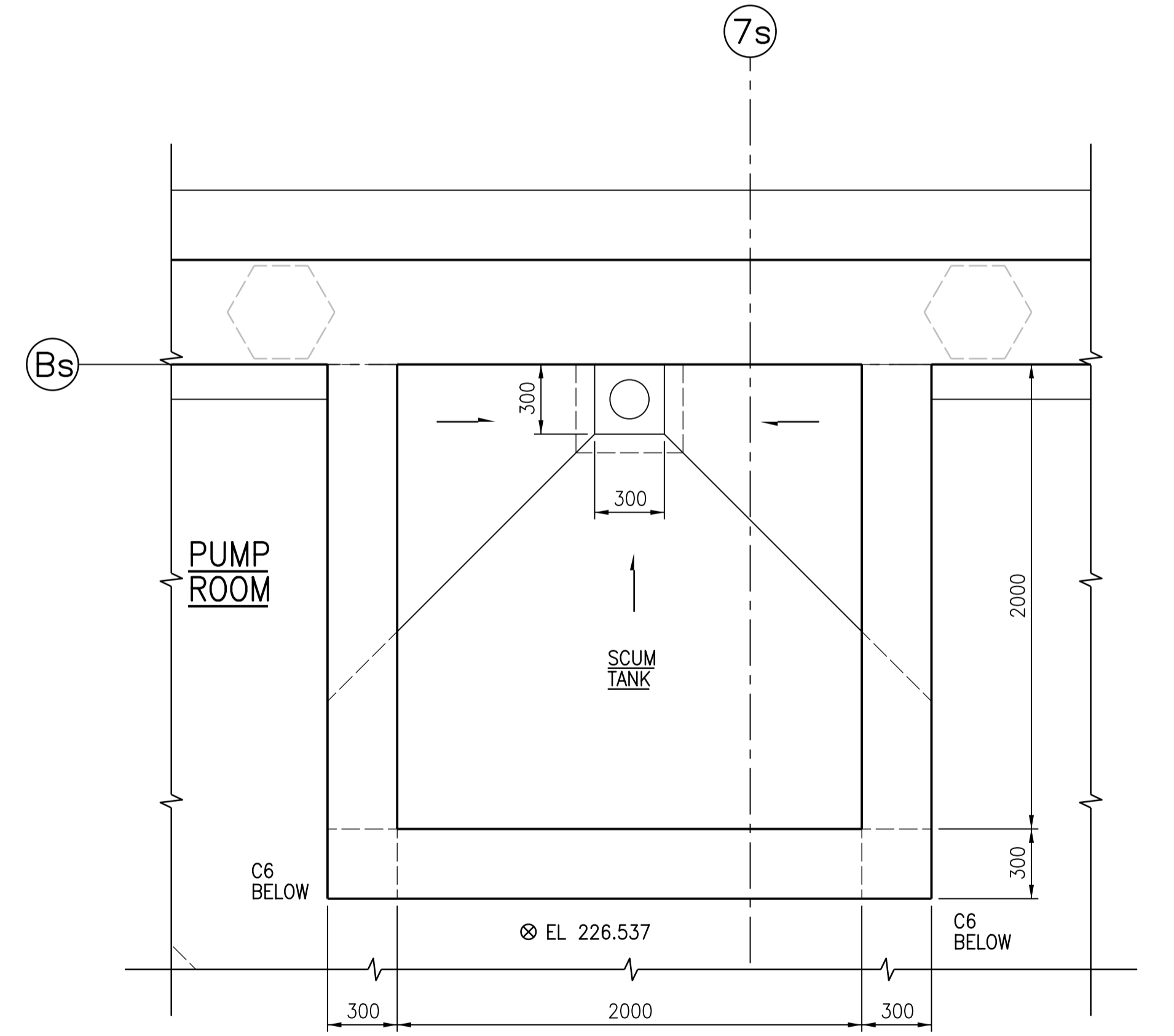
**4** DETAIL  
1:20  
SGAD-S005



**5** DETAIL  
1:20  
SGAD-S005



**6** DETAIL  
1:20  
SGAD-S009

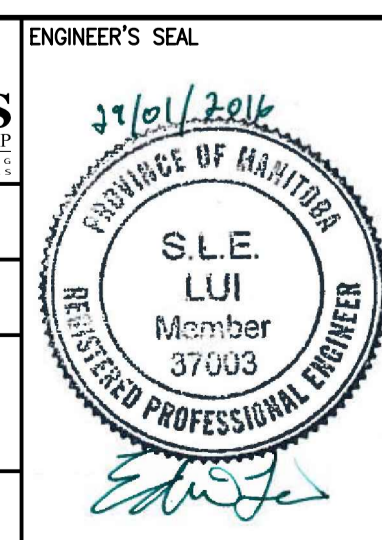


**7** DETAIL  
1:20  
SGAD-S004



NO.	REVISIONS	DATE	DESIGN	CHECK
00	ISSUED FOR TENDER - B.O. 899-2015	01/2016	G.O.	J.C.

<b>CH2MHILL</b>		<b>KCS GROUP</b>	
DESIGNED BY: A THAKKAR	CHECKED BY: R. PARIKH	ENGINEER'S SEAL	
DRAWN BY: G. OMORI	APPROVED BY: H.T. FREIHAMMER		
SCALE: 1:20	ISSUED FOR CONSTRUCTION BY: T. TURZAK		
DATE: 2016/01/29	DATE: 2016/01/29	CONSULTANT NO.: 474248	



**THE CITY OF WINNIPEG**  
WATER AND WASTE DEPARTMENT

SOUTH END WATER POLLUTION CONTROL CENTRE  
SEWPCC UPGRADING/EXPANSION PROJECT  
STRUCTURAL  
SECONDARY CLARIFIERS 4 AND 5  
DETAILS

CITY DRAWING NUMBER: 1-0102-SDTL-S006 | SHEET: 001 | REV: 00 | SIZE: A1